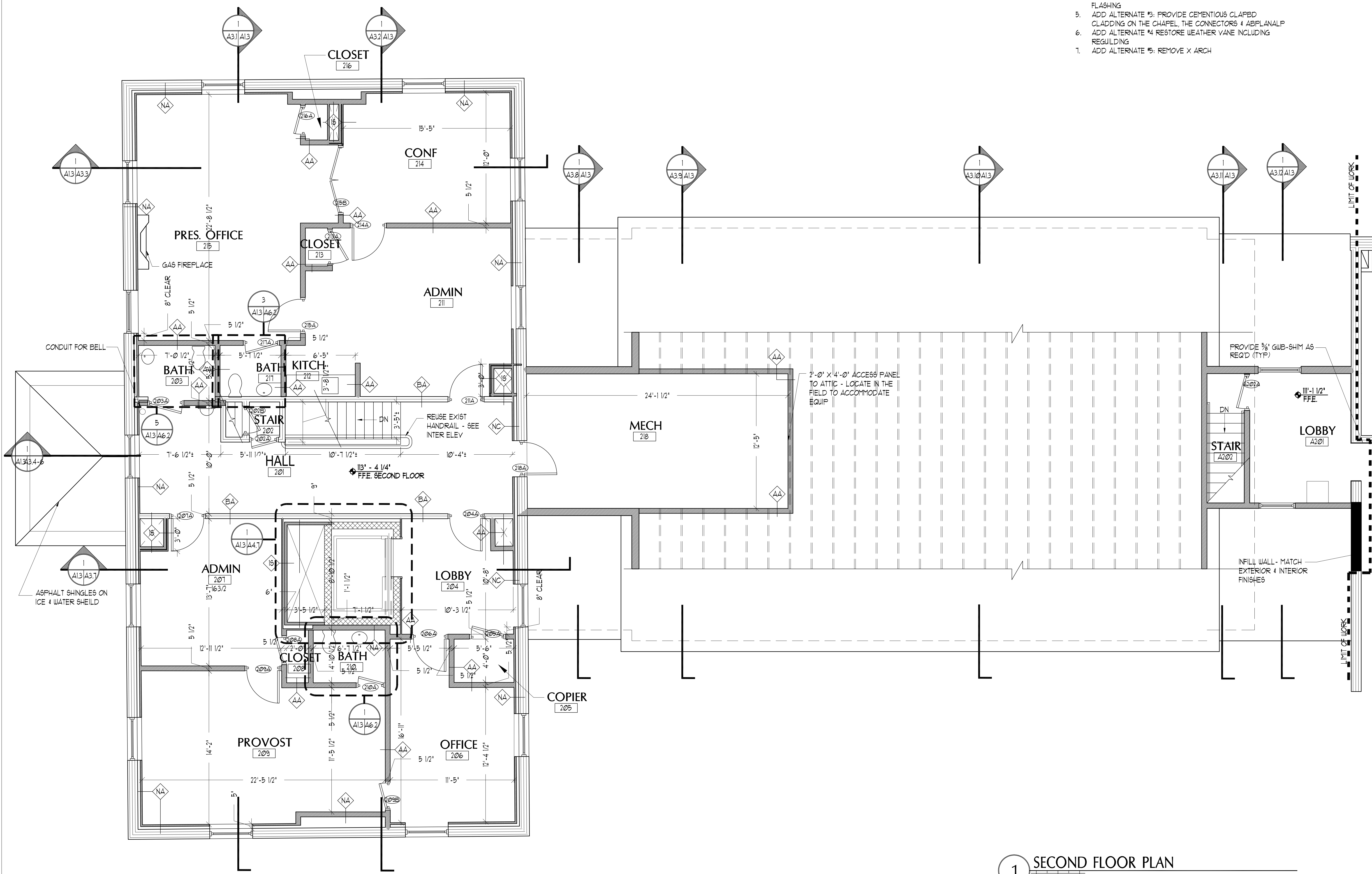
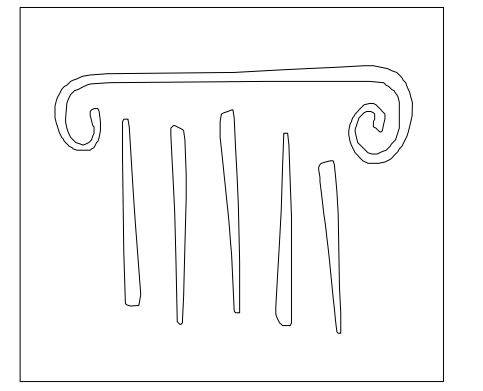


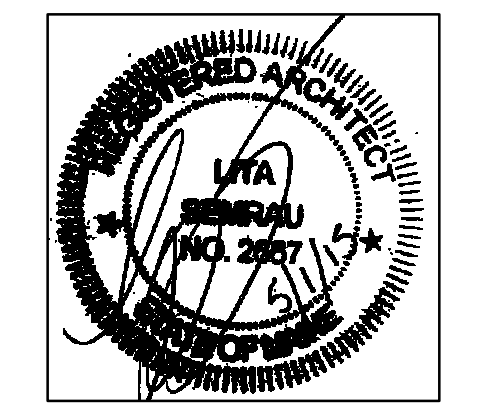
- EXTERIOR NOTES:
1. EXTERIOR OF ALUMNI TO BE REPAIRED & REPOINTED  
- SEE RESTORATION ELEVATIONS FOR ADDITIONAL INFORMATION
  2. EXIST BRICK WD TRIM AND FLUSH BD ON ALUMNI PROPER TO BE PTD - GRANITE BASE NOT TO BE PTD
  3. ADD ALTERNATE #1: PROVIDE SHUTTERS
  4. ADD ALTERNATE #2: PROVIDE SLATE ROOF W/ COPPER FLASHING
  5. ADD ALTERNATE #3: PROVIDE CEMENTIOUS CLAPBD CLADDING ON THE CHAPEL, THE CONNECTORS & ABPLANALP
  6. ADD ALTERNATE #4: RESTORE WEATHER VANE INCLUDING REGULINDG
  7. ADD ALTERNATE #5: REMOVE X ARCH



1 SECOND FLOOR PLAN  
SCALE: 1/4" = 1'-0"



65 NEWBURY STREET  
PORTLAND, ME 04101  
207.781.9000  
info@portcityarch.com  
WWW.PORTCITYARCH.COM



**UNE**  
UNIVERSITY OF  
NEW ENGLAND

**Allied Engineering**  
Structural Mechanical Electrical Commissioning

**CONSIGLI**  
Est. 1905

**BECKER**  
STRUCTURAL ENGINEERS

**PERMIT SET**

REVISIONS		
No.	Description	Date

UNIVERSITY OF  
NEW ENGLAND  
PORTLAND, MAINE

**ALUMNI HALL  
RENOVATION**

Project Number 14525  
Date May 01, 2015  
Drawn by JP TS SM AR  
Checked by LAS

**A1.3**  
Scale AS NOTED