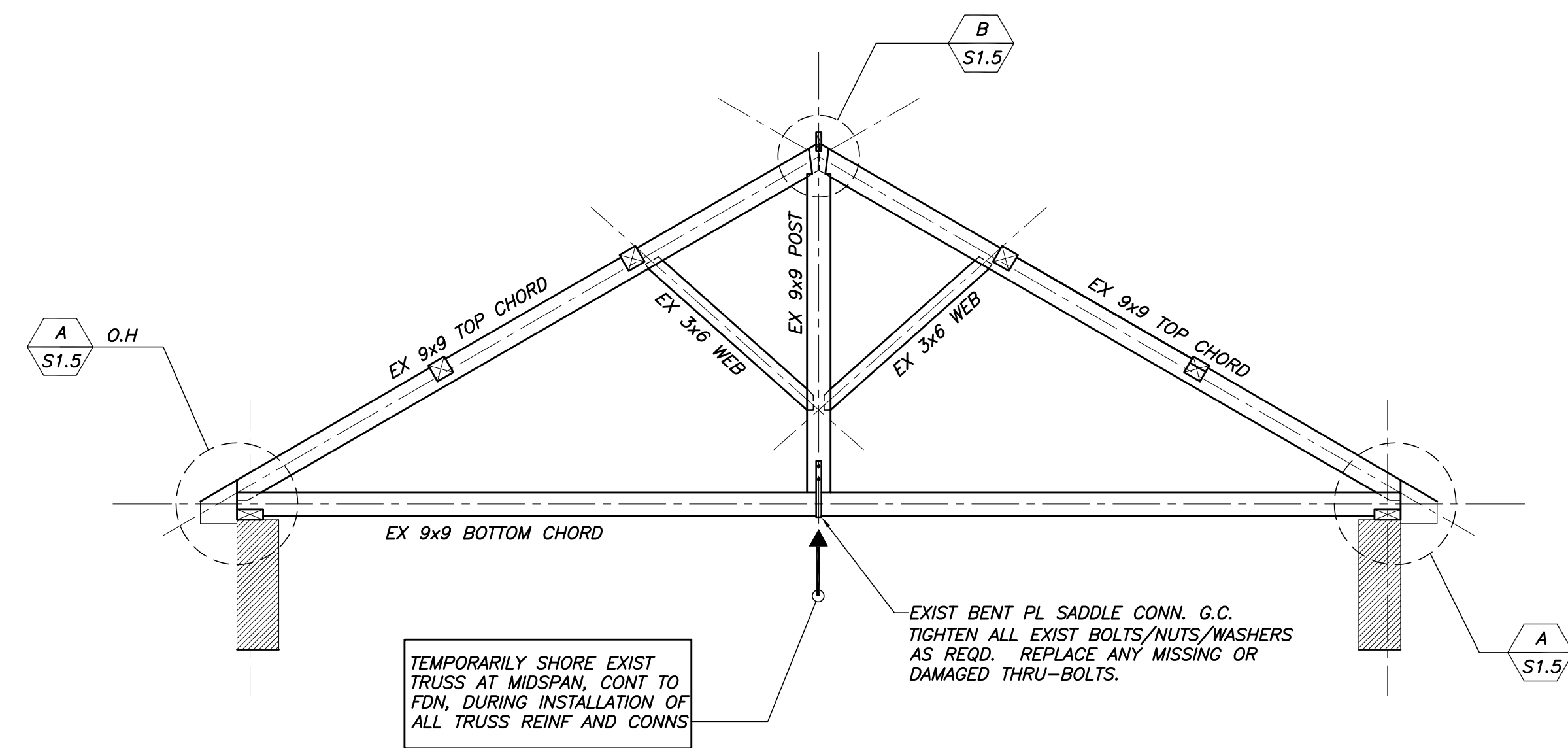


EXIST ROOF FRAMING PLAN

1/4"=1'-0"

NOTES:

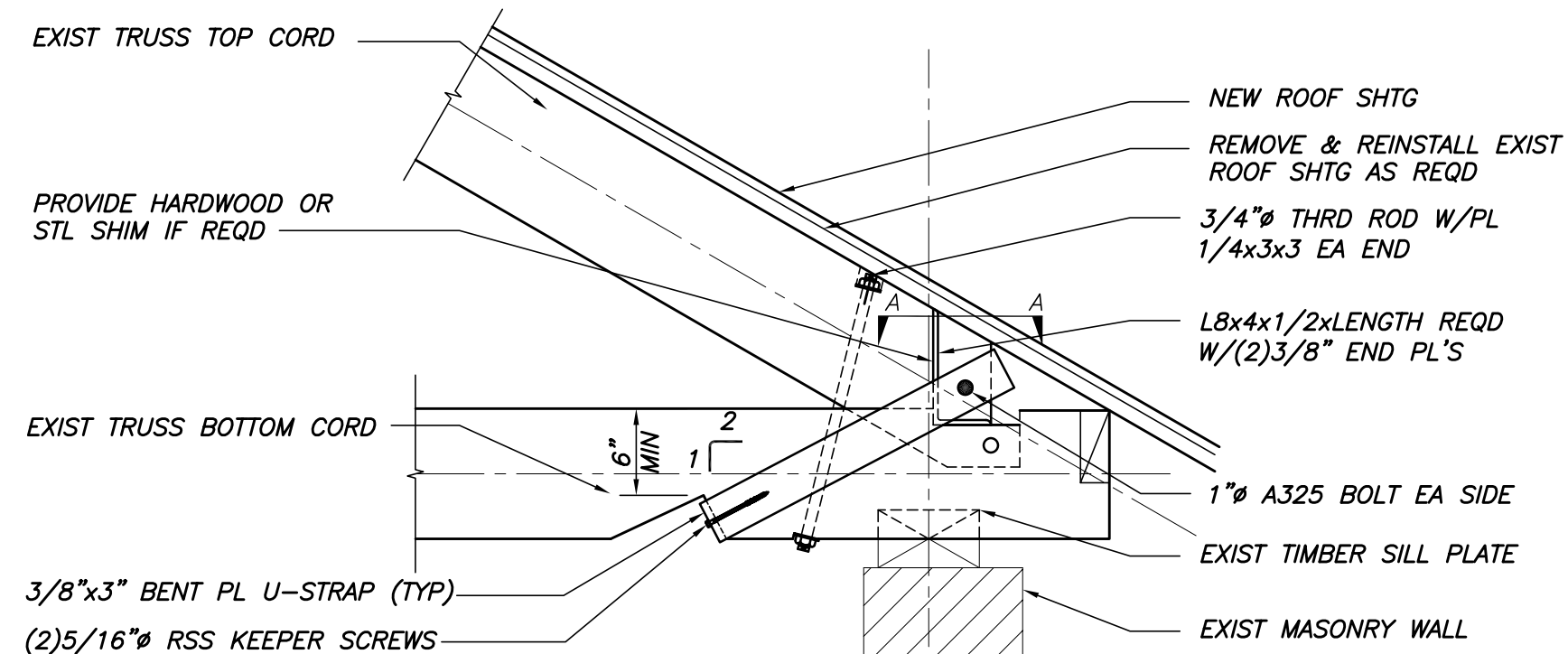
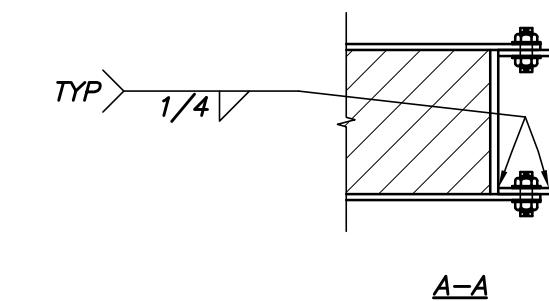
1. INDICATES 5/8" T&G SHTG INSTALLED OVER EXIST BOARD SHTG.



TYP EXIST TRUSS ELEVATION

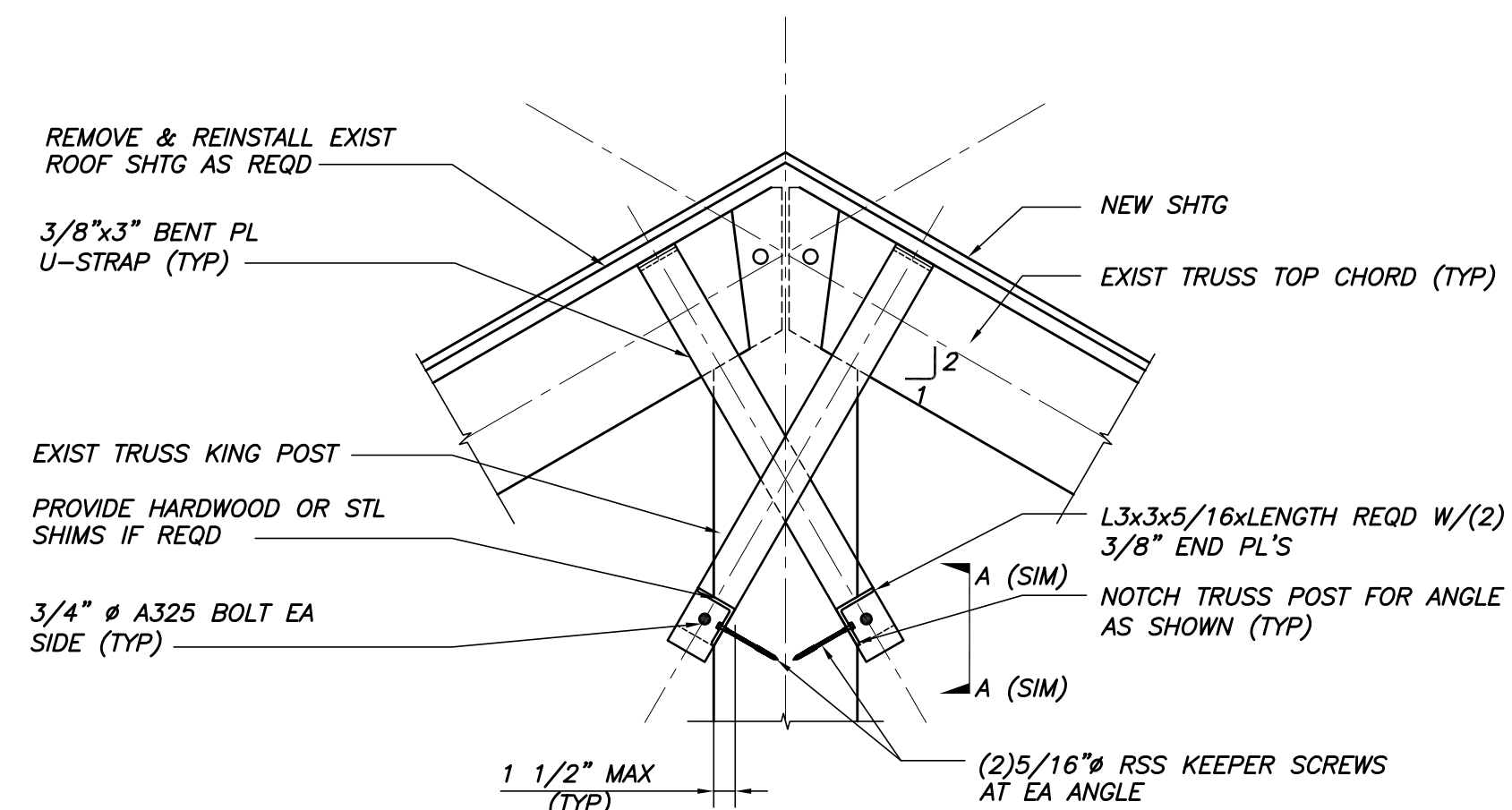
TEMPORARILY SHORE EXIST TRUSS AT MIDSPAN, CONT TO FDN, DURING INSTALLATION OF ALL TRUSS REINF AND CONNS

EXIST BENT PL SADDLE CONN. G.C. TIGHTEN ALL EXIST BOLTS/NUTS/WASHERS AS REQD. REPLACE ANY MISSING OR DAMAGED THRU-BOLTS.



DETAIL

1"=1'-0"

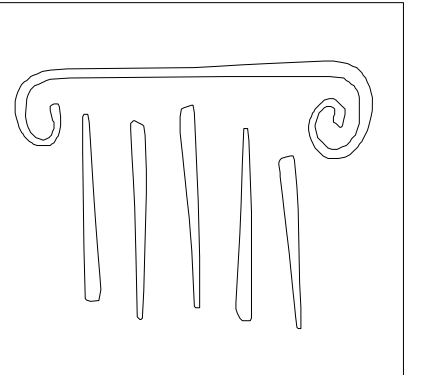


DETAIL

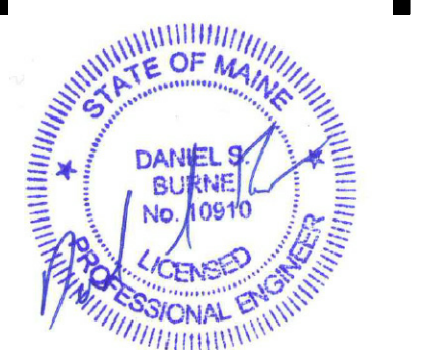
1"=1'-0"

SIMPSON HUB HANGER AT EXIST PURLIN CONN TO TRUSS (TYP, U.N.O.) SHIM TIGHT AS REQD.

REINF EXIST PURLIN CONN AT HIP BEAM, TYP



65 NEWBURY STREET  
PORTLAND, ME 04101  
207.761.9000  
info@portcityarch.com  
WWW.PORTCITYARCH.COM



REVISIONS		
No.	Description	Date

PERMIT SET

UNIVERSITY OF NEW ENGLAND  
PORTLAND, MAINE

ALUMNI HALL RENOVATION

EXIST ROOF FRAMING PLAN

Project Number 3450  
Date May 1, 2015  
Drawn by MSK  
Checked by CGW