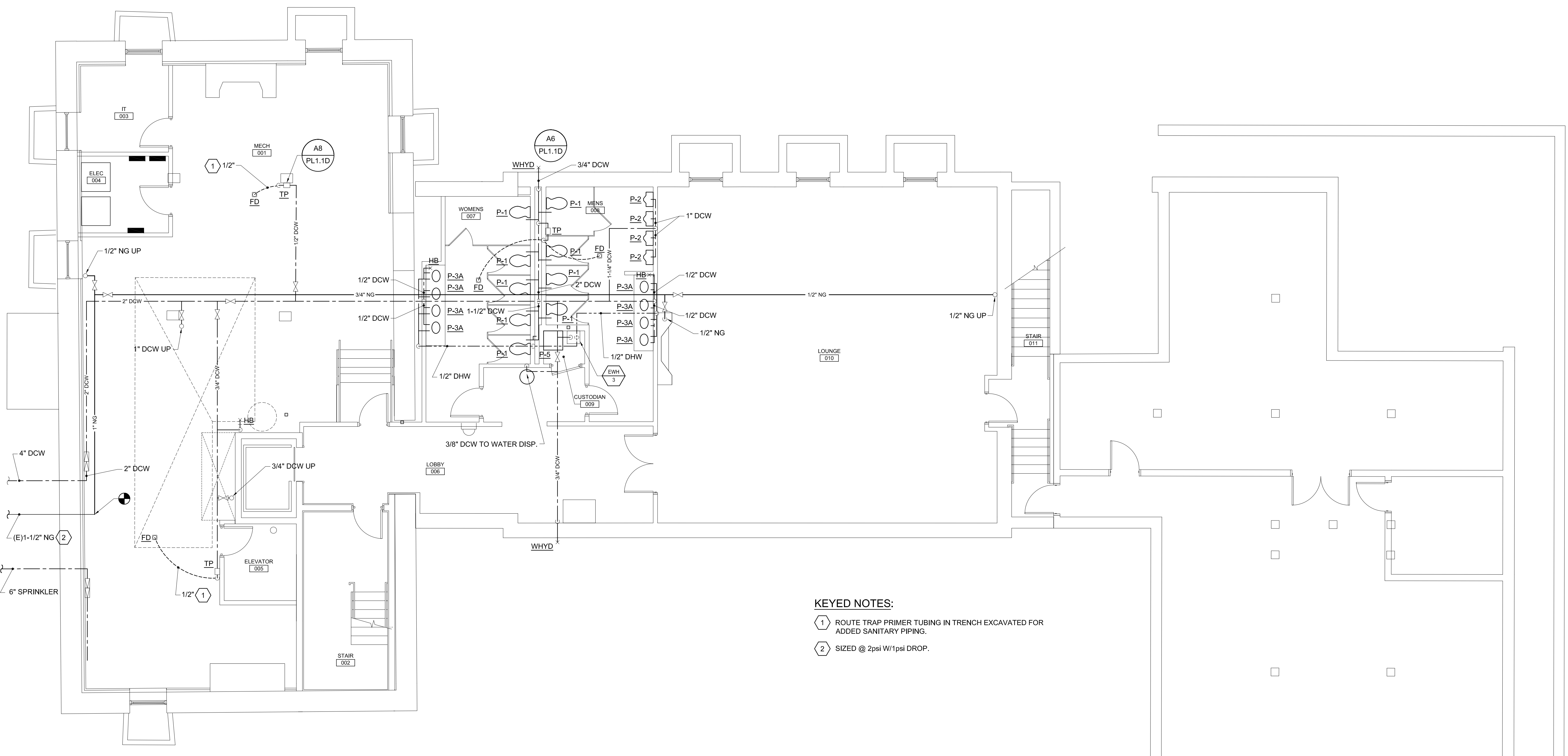
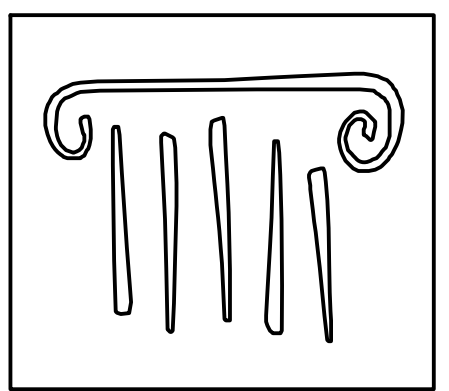
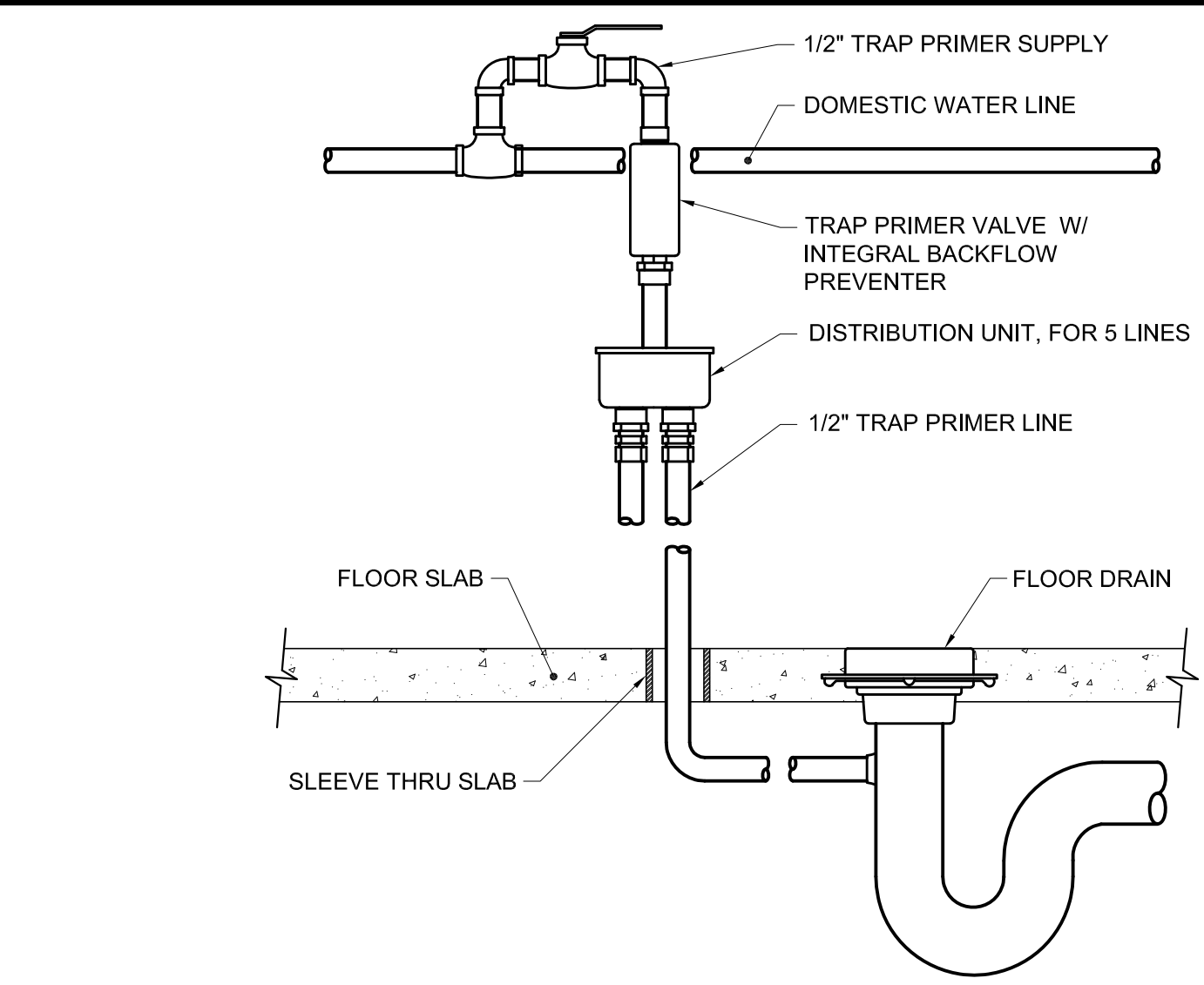
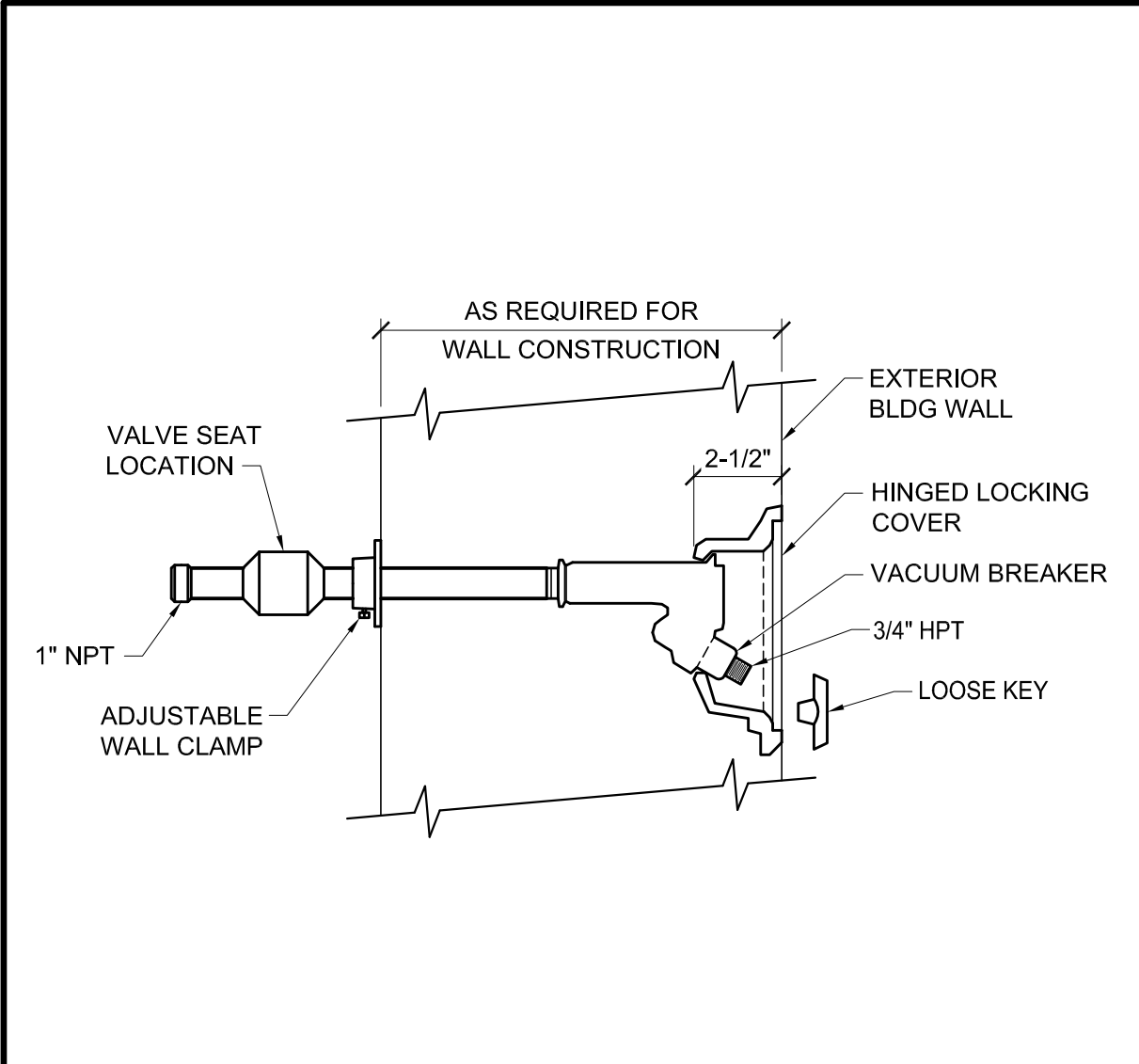


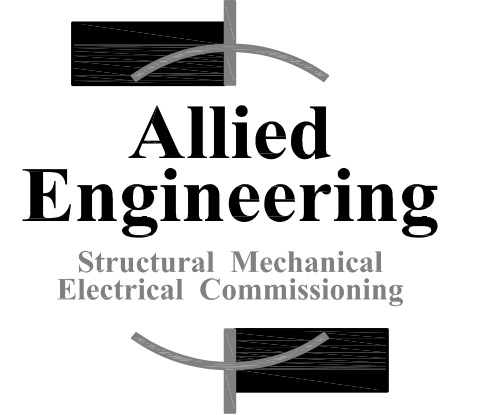
N:\Projects\2014\14088 - UNE - Alumni Hall\GD Drawing Files\14088M.dwg Apr 30, 2015 - 3:35pm



- KEYED NOTES:**
- 1 ROUTE TRAP PRIMER TUBING IN TRENCH EXCAVATED FOR ADDED SANITARY PIPING.
 - 2 SIZED @ 2psi W/1psi DROP.

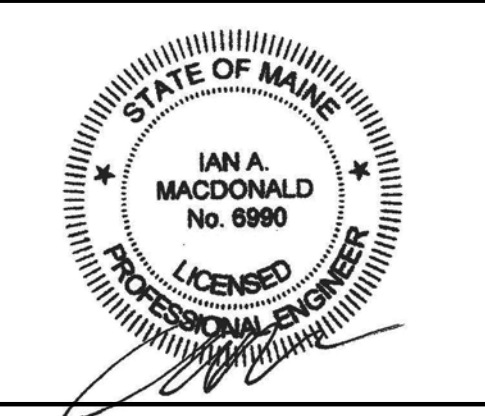


65 NEWBURY STREET
 PORTLAND, ME 04101
 207.761.9000
 info@portcityarch.com
 WWW.PORTCITYARCH.COM



160 Veranda Street
 Portland, Maine 04103
 T: 207.221.2260
 F: 207.221.2266
 Web: www.allied-eng.com

ALLIED PROJECT No: 14088
 Graphic Scale: 1/2" = 1'



REVISIONS		
No.	Description	Date

PERMIT SET

UNIVERSITY OF
 NEW ENGLAND
 PORTLAND, MAINE

ALUMNI HALL
 RENOVATION

DOMESTIC PIPING
 PLAN ~ LOWER LEVEL

Project Number 14525
 Date May 1, 2015
 Drawn by REW
 Checked by HAG

P2
 Scale AS NOTED

A1	DOMESTIC PIPING PLAN ~ LOWER LEVEL	A6	DETAIL ~ EXTERIOR WALL HYDRANT	A8	DETAIL ~ TRAP PRIMER PIPING
3/16" = 1'-0"		NOT TO SCALE		NOT TO SCALE	