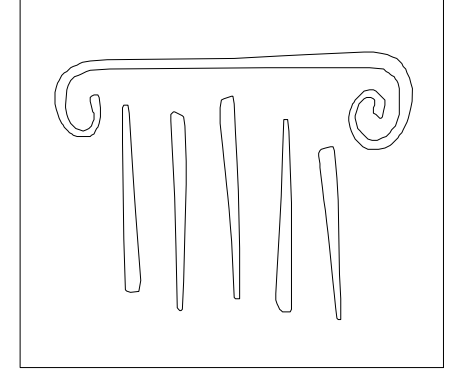
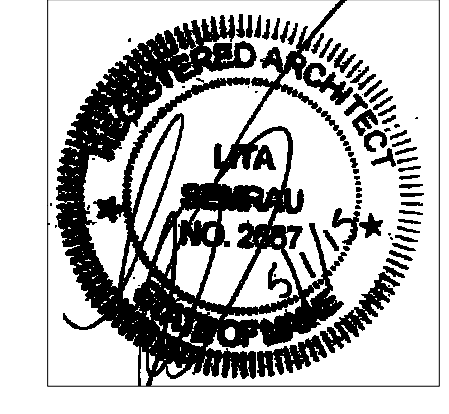


RCP NOTES:
1. SEE MECH AND ELEC FOR
LIGHT AND DIFFUSER LOCATIONS



65 NEWBURY STREET
PORTLAND, ME 04101
207.761.9000
info@portcityarch.com
WWW.PORTCITYARCH.COM



UNE
UNIVERSITY OF
NEW ENGLAND

Allied Engineering
Structural Mechanical Electrical Commissioning

CONSIGLI
Est. 1905

BECKER
STRUCTURAL ENGINEERS

PERMIT SET

REVISIONS

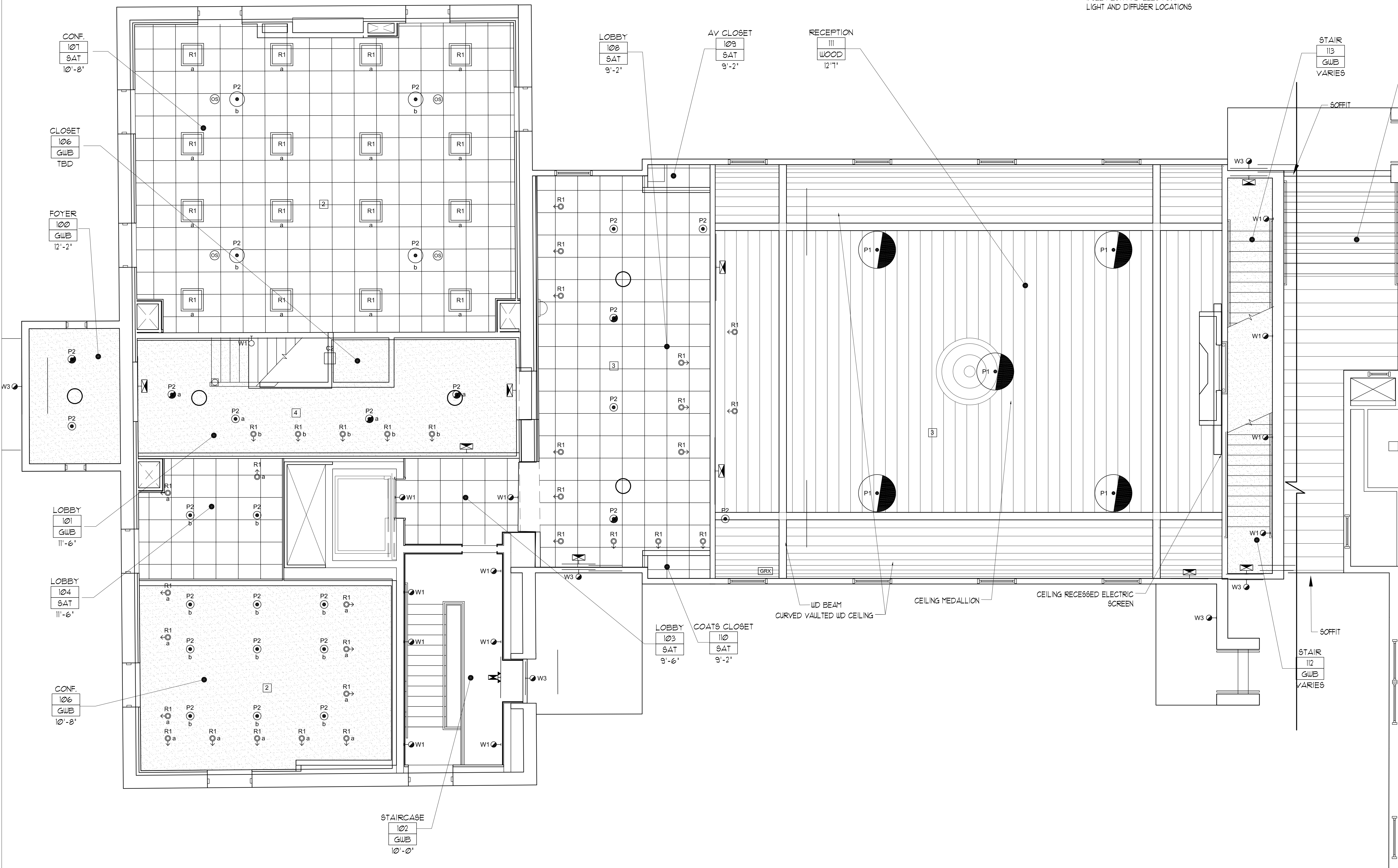
No.	Description	Date

UNIVERSITY OF
NEW ENGLAND
PORTLAND, MAINE

**ALUMNI HALL
RENOVATION
FIRST FLOOR
RCP**

Project Number 14525
Date May 01, 2015
Drawn by JP TS SM AR
Checked by LAS

12
Scale AS NOTED



1 FIRST FLOOR PLAN
SCALE: 1/4" = 1'-0"