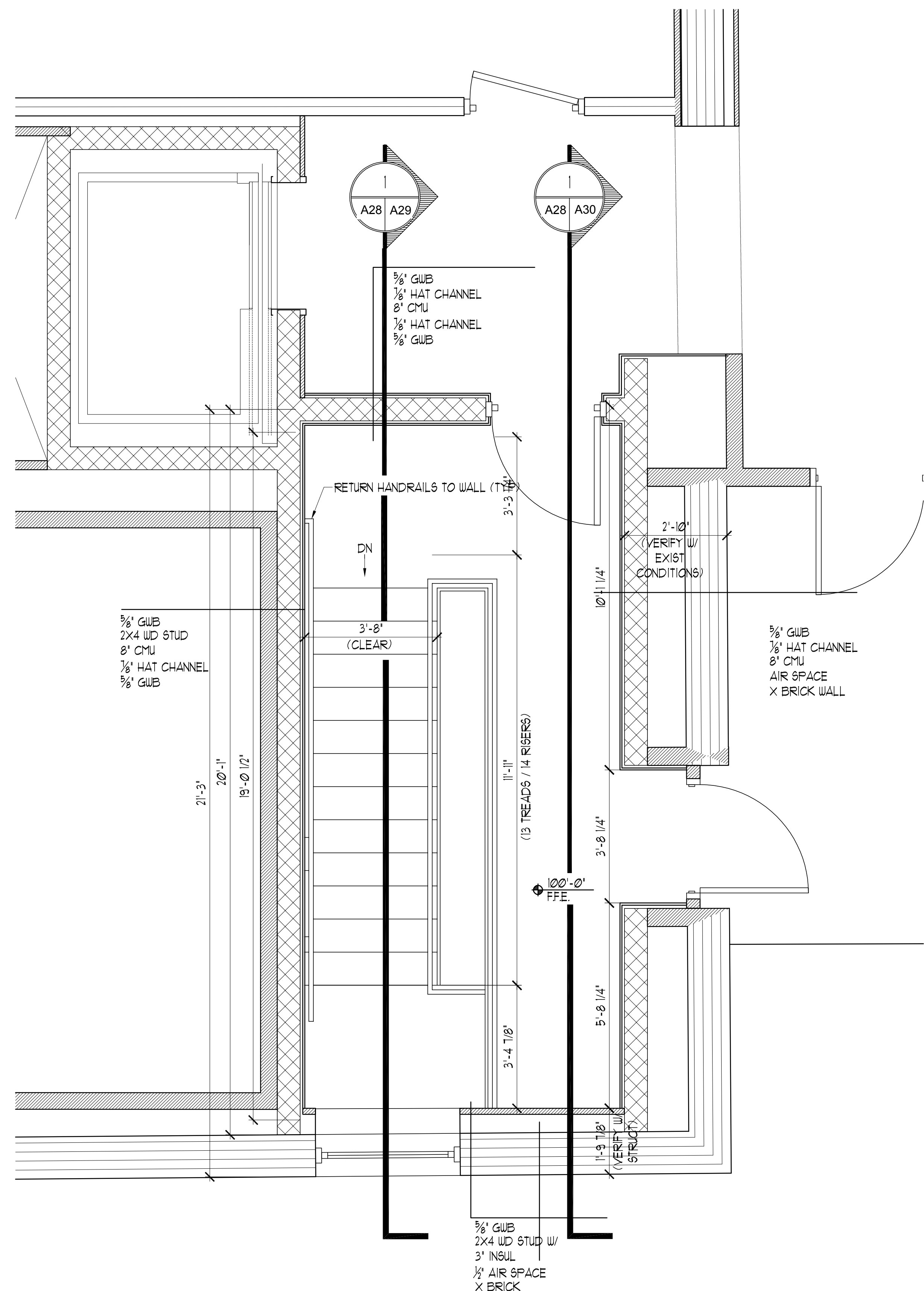


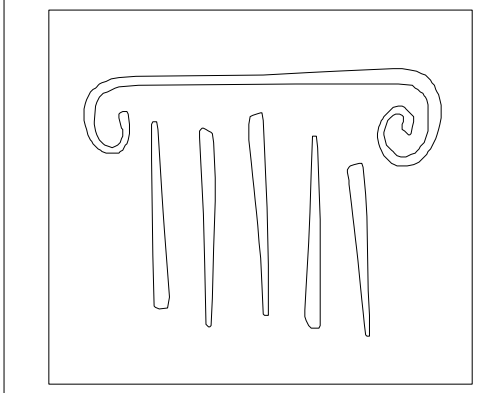
**2 LOWER LEVEL STAIR PLAN**  
 SCALE: 1/2" = 1'-0"



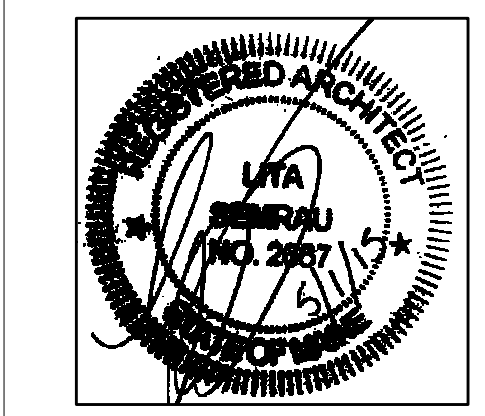
**1 GROUND LEVEL STAIR PLAN**  
 SCALE: 1/2" = 1'-0"

**NOTE:**  
 HANDRAILS TO EXTEND 12" HORIZ. AT THE TOP OF ALL STAIR RUNS (MIN.) AND CONTINUE TO SLOPE AT THE BOTTOM OF ALL STAIR RUNS FOR A HORIZ. DISTANCE OF 11" (MIN.), TYP.

**NOTE:**  
 CONTRACTOR TO VERIFY DIMENSIONS & REPORT TO ARCHITECT FOR COORDINATION PURPOSES



65 NEWBURY STREET  
 PORTLAND, ME 04101  
 207.761.9000  
 info@portcityarch.com  
 WWW.PORTCITYARCH.COM



**UNE**  
 UNIVERSITY OF  
 NEW ENGLAND

**Allied Engineering**  
 Structural Mechanical Electrical Consulting

**CONSIGLI**  
 Est. 1905

**BECKER**  
 STRUCTURAL ENGINEERS

**PERMIT SET**

REVISIONS		
No.	Description	Date

**UNIVERSITY OF  
 NEW ENGLAND**  
 PORTLAND, MAINE

**ALUMNI HALL  
 RENOVATION**

**STAIR PLAN**

Project Number 14525  
 Date May 03, 2015  
 Drawn by JP TS SM AR  
 Checked by LAS

A28

Scale AS NOTED