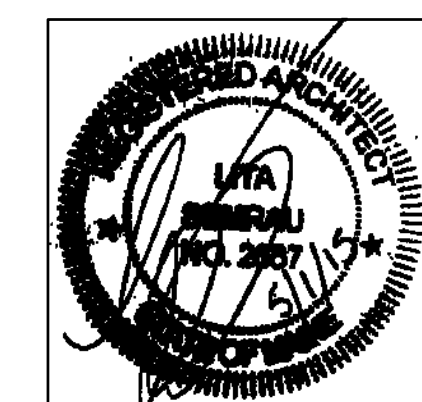


65 NEWBURY STREET
 PORTLAND, ME 04101
 207.761.9000
 info@portcityarch.com
 WWW.PORTCITYARCH.COM



UNE
 UNIVERSITY OF
 NEW ENGLAND

Allied Engineering
 Structural Mechanical Electrical Commissioning

CONSIGLI
 Est. 1905

BECKER
 STRUCTURAL ENGINEERS

PERMIT SET

REVISIONS		
No.	Description	Date

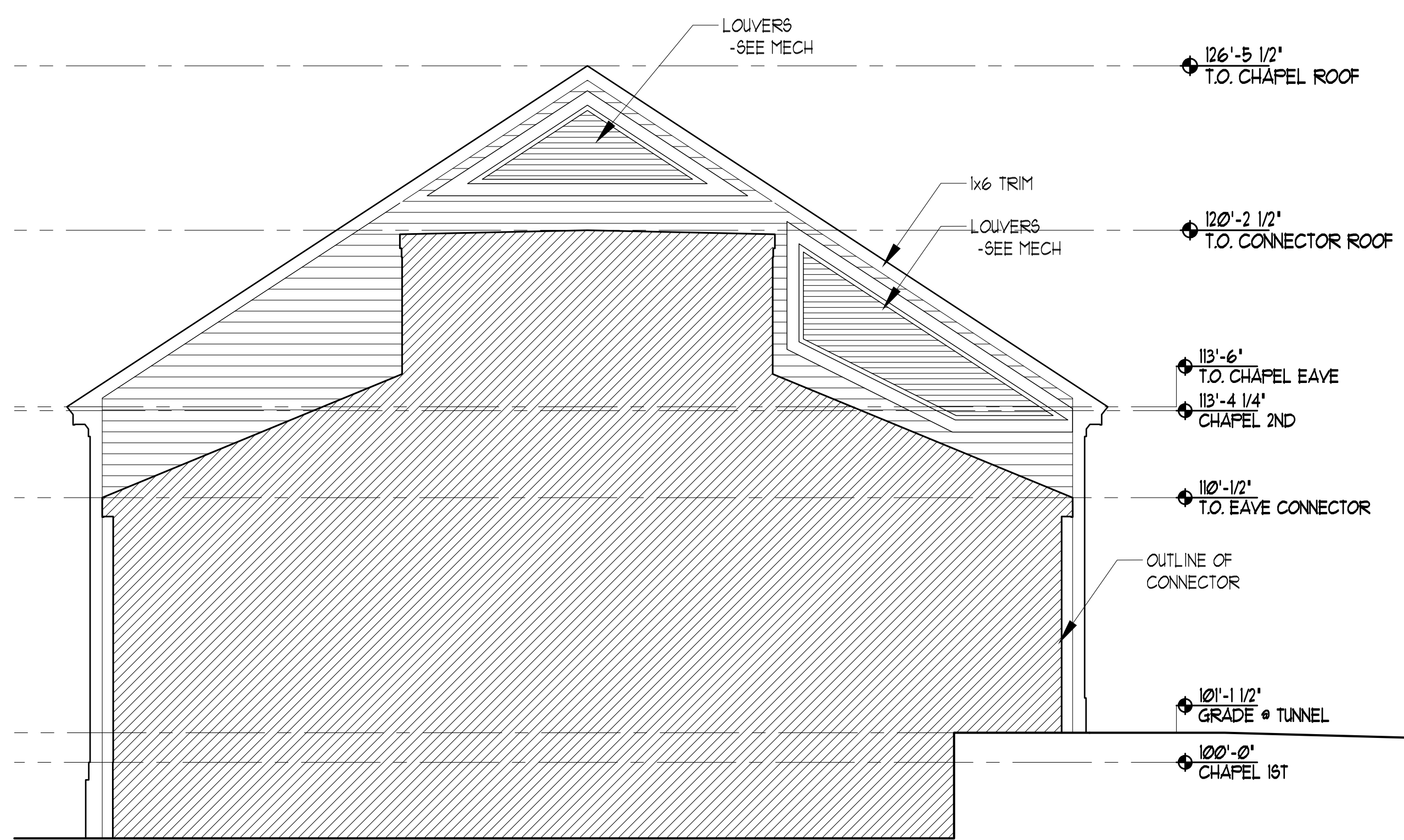
UNIVERSITY OF
 NEW ENGLAND
 PORTLAND, MAINE
**ALUMNI HALL
 RENOVATION**

Project Number 14525
 Date May 01, 2015
 Drawn by JP TS SM AR
 Checked by LAS

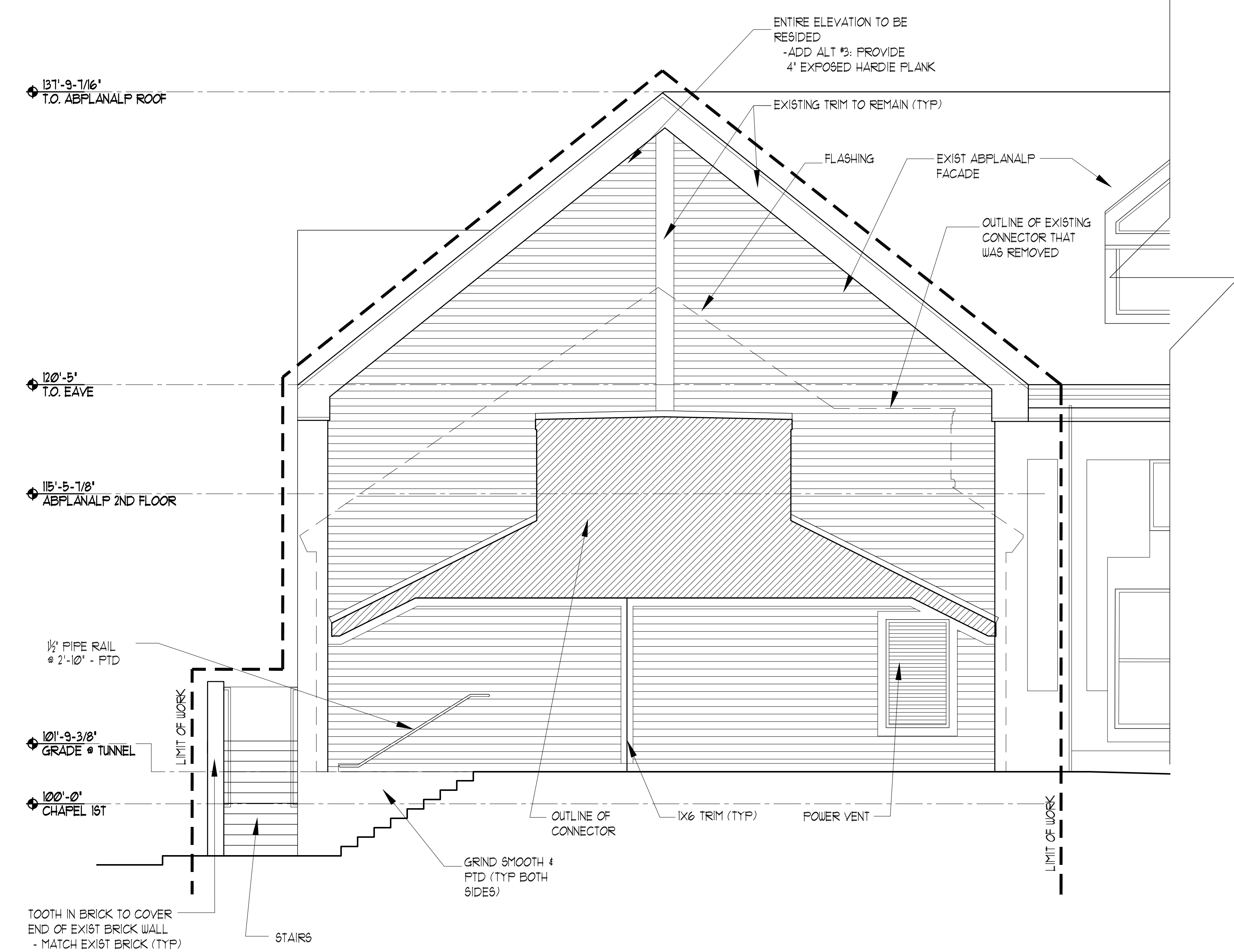
A14

Scale AS NOTED

- EXTERIOR NOTES:
1. EXTERIOR OF ALUMNI TO BE REPAIRED & REPOINTED
 - SEE RESTORATION ELEVATIONS FOR ADDITIONAL INFORMATION
 2. EXIST BRICK WD TRIM AND FLUSH BD ON ALUMNI PROPER TO BE PTD - GRANITE BASE NOT TO BE PTD
 3. ADD ALTERNATE #1: PROVIDE SHUTTERS
 4. ADD ALTERNATE #2: PROVIDE SLATE ROOF W/ COPPER FLASHING
 5. ADD ALTERNATE #3: PROVIDE CEMENTIOUS CLAPED CLADDING ON THE CHAPEL, THE CONNECTORS & ABPLANALP
 6. ADD ALTERNATE #4 RESTORE WEATHER VANE INCLUDING REGUILDING
 7. ADD ALTERNATE #5: REMOVE X ARCH
 8. ENTIRE CUPOLA TO BE PTD EXCEPT FOR COPPER & BELL



2 CHAPEL EAST ELEVATION
 SCALE: 1/4" = 1'-0"



1 ABPLANALP ELEVATION
 SCALE: 1/4" = 1'-0"