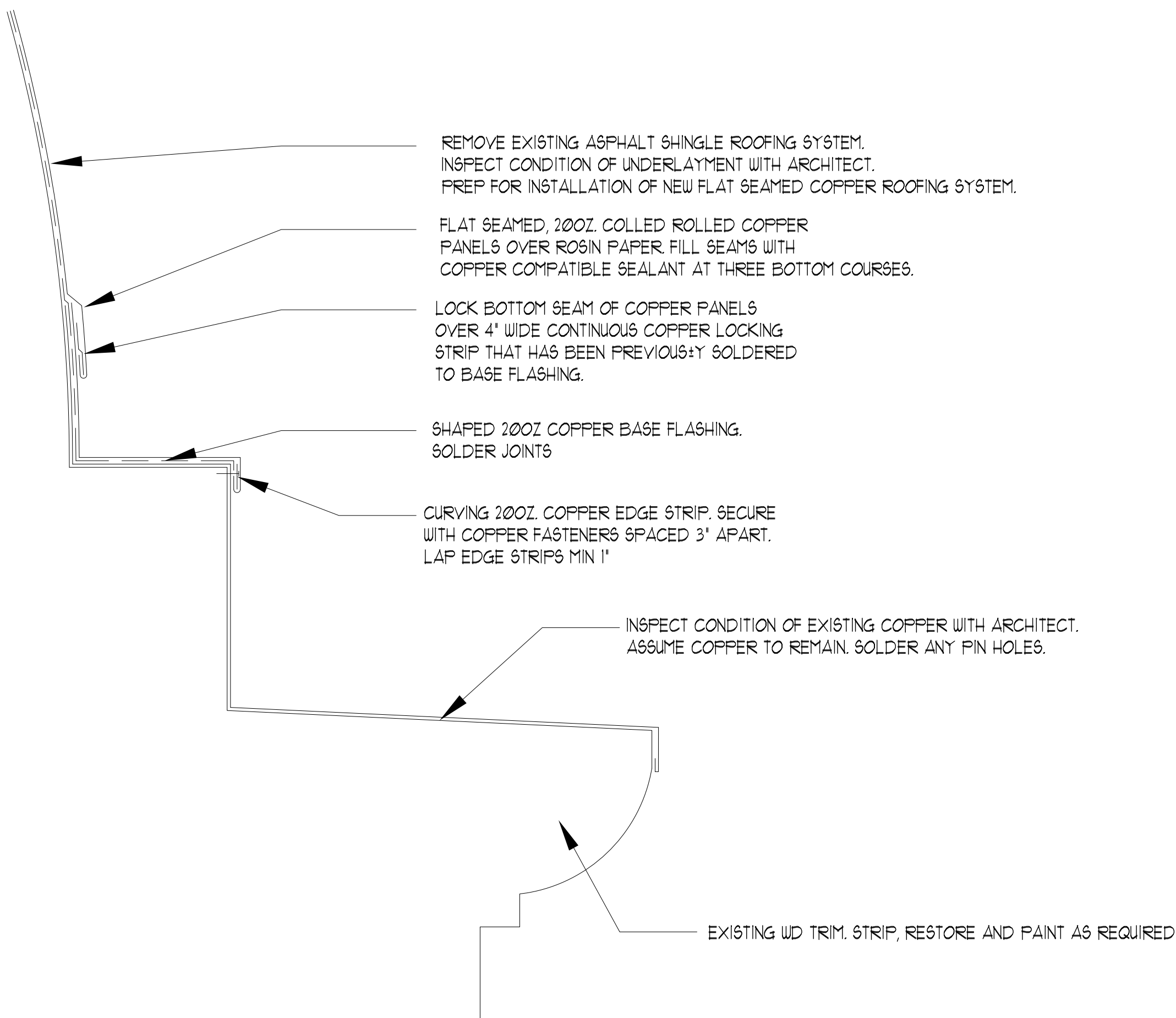
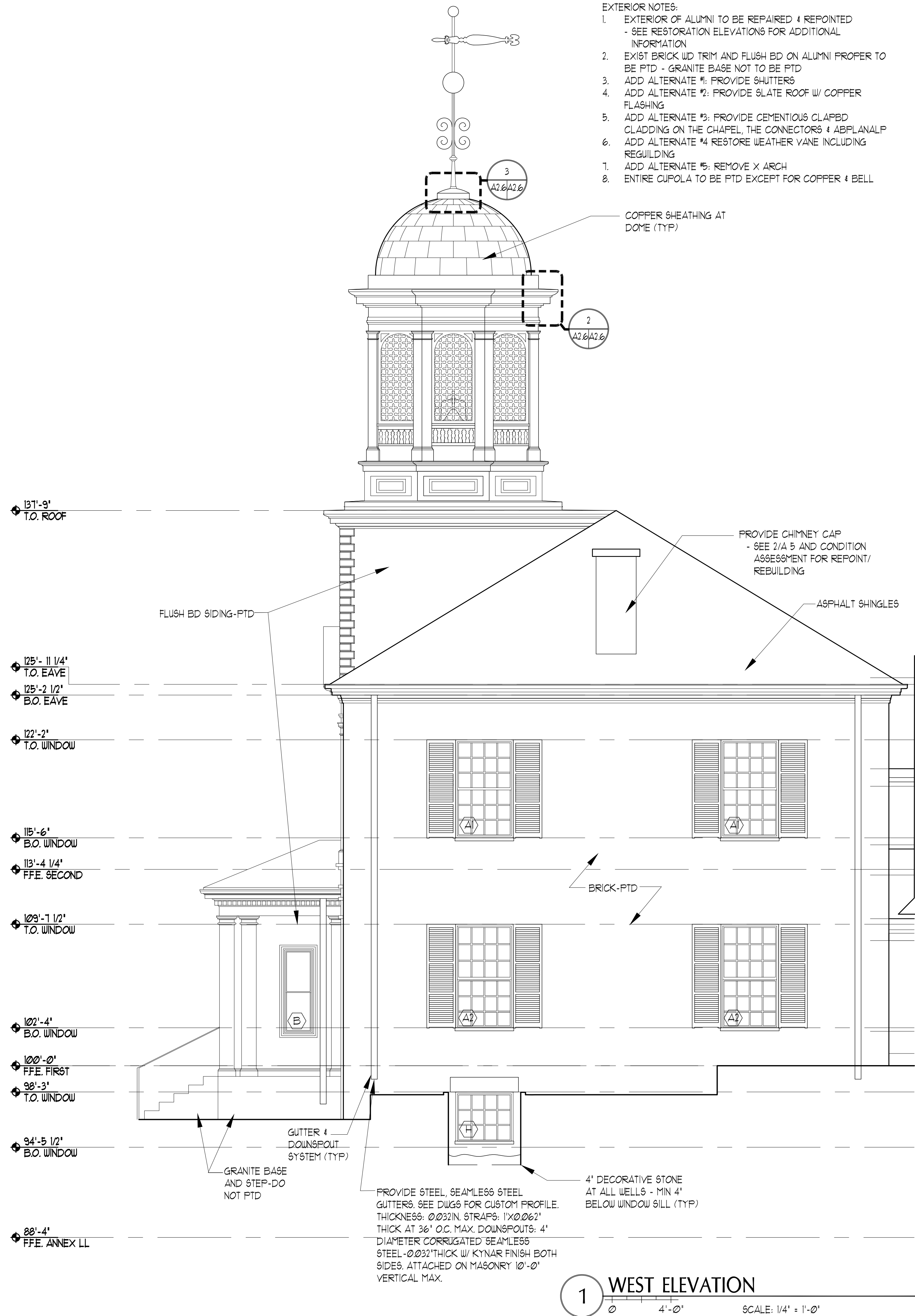


2 CUPOLA DETAILS
SCALE: 3' = 1'-0"

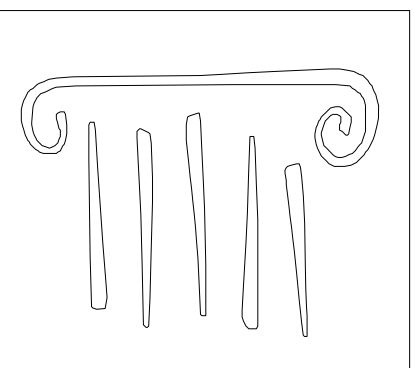


2 CUPOLA DETAILS
SCALE: 3' = 1'-0"

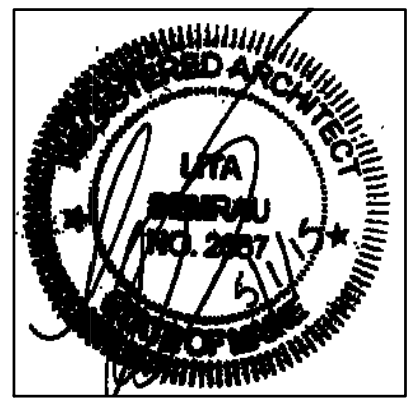
- EXTERIOR NOTES:
1. EXTERIOR OF ALUMNI TO BE REPAIRED & REPOINTED
- SEE RESTORATION ELEVATIONS FOR ADDITIONAL INFORMATION
 2. EXIST BRICK W/D TRIM AND FLUSH BD ON ALUMNI PROPER TO BE PTD - GRANITE BASE NOT TO BE PTD
 3. ADD ALTERNATE #1: PROVIDE SHUTTERS
 4. ADD ALTERNATE #2: PROVIDE SLATE ROOF W/ COPPER FLASHING
 5. ADD ALTERNATE #3: PROVIDE CEMENTIOUS CLAFBD CLADDING ON THE CHAPEL, THE CONNECTORS & ABPLANALP
 6. ADD ALTERNATE #4: RESTORE WEATHER VANE INCLUDING REGUILDING
 7. ADD ALTERNATE #5: REMOVE X ARCH
 8. ENTIRE CUPOLA TO BE PTD EXCEPT FOR COPPER & BELL



1 WEST ELEVATION
SCALE: 1/4" = 1'-0"



65 NEWBURY STREET
PORTLAND, ME 04101
207.781.9000
info@portcityarch.com
WWW.PORTCITYARCH.COM



PERMIT SET

REVISIONS		
No.	Description	Date

UNIVERSITY OF
NEW ENGLAND
PORTLAND, MAINE

ALUMNI HALL
RENOVATION
EXTERIOR
ELEVATIONS

Project Number 14525
Date May 01, 2015
Drawn by JP TS SM AR
Checked by LAS

A12

Scale AS NOTED