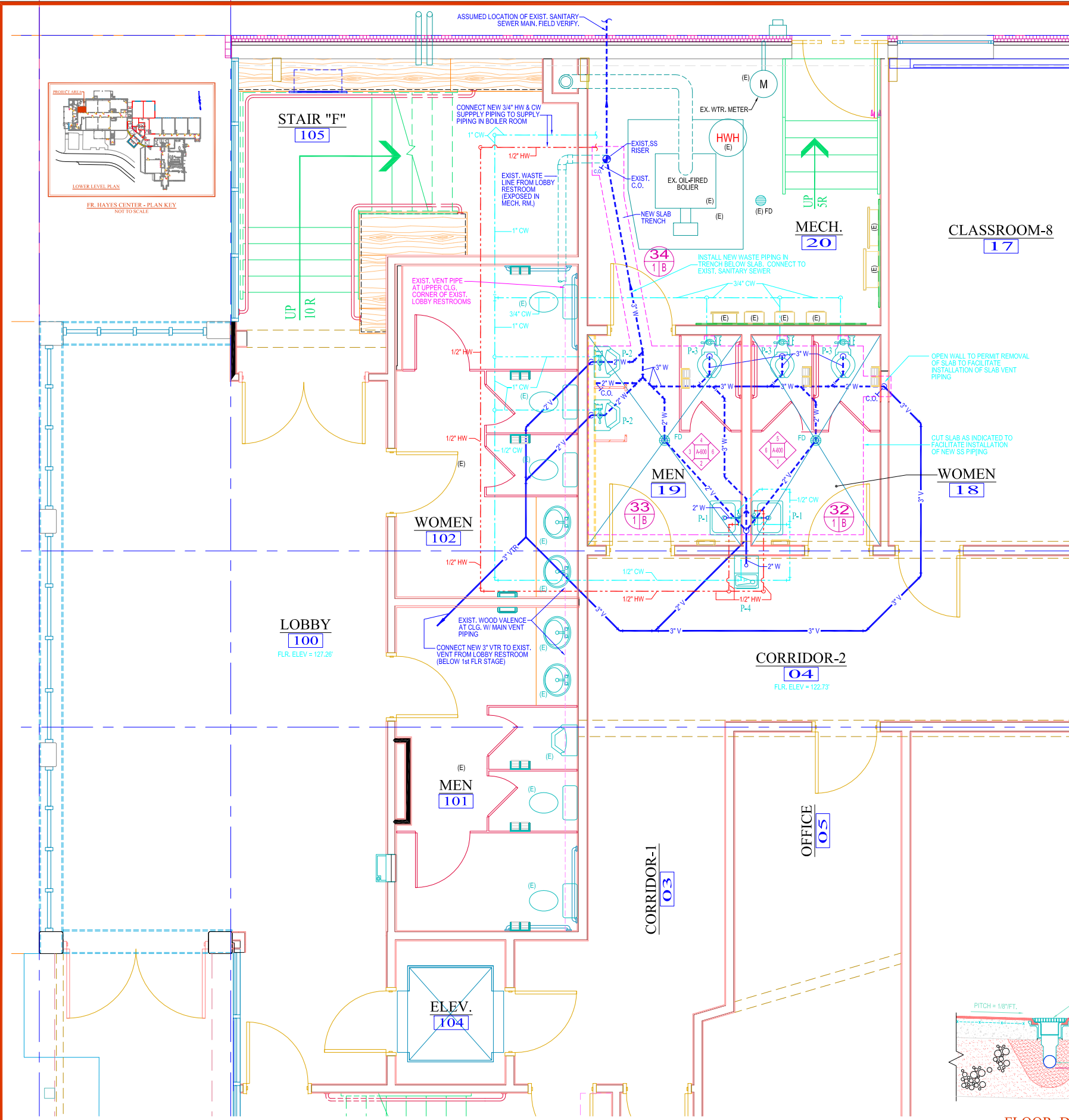


FR. HAYES CENTER - PLAN KEY
NOT TO SCALE

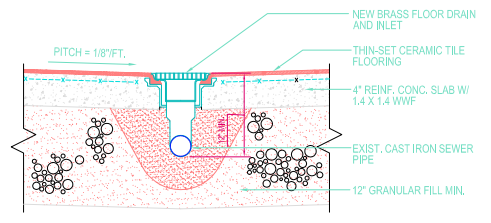


TOILET ACCESSORIES SCHEDULE				
ITEM	MFGR.	MODEL NO.	NO. REQ'D	SPECIFICATIONS:
TOILET TISSUE DISPENSER	BOBRICK	B-2740	3	DUAL-ROLL, 14-1/8" W, 5-1/4" PROJECTION, VANDAL RESISTANT, HEAVY-DUTY CAST ALUMINUM SATIN FINISH TOILET TISSUE DISPENSERS WITH HIGH-IMPACT PLASTIC ROLLERS, AND KEYPAD SPINDE LOCKS. CAPACITY UP TO TWO 6" ROLLS.
PAPER TOWEL DISPENSER	BOBRICK	B-262	2	"CLASSICSERIES" 10-3/4" W, 14" H, 4" D, SATIN FINISH, STAINLESS STEEL, SURFACE MOUNTED PAPER TOWEL DISPENSER. CAPACITY 525 MULTI-FOLD TOWELETTES.
SOAP DISPENSER	BOBRICK	B-2111	2	"CLASSICSERIES" 4-3/4" W, 8-1/8" H, 40-FL. OZ., SURFACE MOUNTED, SATIN-FINISH STAINLESS STEEL SOAP DISPENSER WITH CONCEALED FASTENING, SOAP REFILL WINDOW, KEYPAD & HINGED FILLER TOP AND PUSH BUTTON OPERATION.
LAVATORY MIRROR	BOBRICK	B-2908 2436	2	MIRROR: 24" W X 36" H, TYPE 304 STAINLESS STEEL WITH SATIN FINISH. ONE-PIECE, ROLL-FORMED, 3/4" X 3/4" WELDED ANGLE FRAME, WITH 1/4" TEMPERED GLASS MIRROR. PROVIDE CONCEALED WALL HANGERS WITH THEFT RESISTANT MOUNTING.
SANITARY NAPKIN - TAMPON DISPENSER	BOBRICK	B-2706 25	1	"CLASSICSERIES" 11-7/8" W, 25-7/8" H, SURFACE MOUNTED, STAIN STAINLESS STEEL, JAM RESISTANT, COIN-OPERATED SANITARY NAPKIN/TAMPON DISPENSER W/ KEYPAD TUMBLER DOOR LOCKS. CAPACITY: 30 TAMPONS & 20 NAPKINS.
TOILET PARTITIONS	BOBRICK	1541	3 SETS W/ DOORS. SEE PLAN	"CLASSICSERIES" STANDARD FLOOR-ANCHORED, HIGH PRESSURE LAMINATE PANELS WITH CONCEALED LEVELING AND POLISHED CHROME PLATED SHOE COVERS, COLOR SELECTED OWNER. PROVIDE ALL WALL ANCHORS, DOOR HINGES, SLIDE-LOCKS AND EXTERNAL PULLS. SEE PLAN FOR TOILET PARTITION CONFIGURATION.
URINAL PARTITIONS	BOBRICK	1541	2 EACH	"CLASSICSERIES" STANDARD FLOOR-ANCHORED, HIGH PRESSURE LAMINATE PANELS WITH CONCEALED LEVELING AND POLISHED CHROME PLATED SHOE COVERS, COLOR SELECTED OWNER. PROVIDE ALL WALL & PANEL ANCHORS. SEE PLAN FOR URINAL PARTITION CONFIGURATION.
URINAL PARTITIONS	BOBRICK	B-6806 X 30	3 EACH	"CLASSICSERIES" 14-1/4" DIAMETER, 18 GA. TYPE 304 SATIN FINISH STAINLESS STEEL TUBING-GRAB BAR WITH CONCEALED MOUNTING FLANGE AND 22 GA., 304 STAINLESS STEEL COVER SNAP ESCUTCHEON PLATES.

PLUMBING FIXTURE CONNECTION SCHEDULE					
TAG	SAN	VENT	CW	HW	REMARKS
P-1	2"	1-1/2"	1/2"	1/2"	KOHLER "GREENWICH" 20" X 18" VITREOUS CHINA, WALL-MOUNT LAVATORY # K-2027 WITH KOHLER "TRITON" FAUCET # K-743-K-CP/K-1601-2-5-CP LEVER TYPE TRIM
P-2	2"	2"	1"	-	KOHLER VITREOUS CHINA "DEXTER" LITE URINAL #K-5016-T, 3/4" TOP SPUD INLET, 1-1/2" O.D. CHROME TAILPIECE, 1-1/2" CHROME PLATED CAST BRASS P-TRAP # K-9000, CHROME CONNECTION FITTINGS AND WALL ESCUTCHEON. PROVIDE SLOAN "G2 OPTIMA PLUS" ELECTRONIC FLUSHMETER, CHROME SUPPLY AND WALL ESCUTCHEON PLATE.
P-3	3"	2"	1"	-	KOHLER "DOWNING" VITREOUS WATER GUARD TOILET # K-4262-ET, FLOOR MOUNTED, W/ "RUSTRA" SOLID PLASTIC TOILET SEAT # K-470-C. KOHLER # K-7606-P CHROME PAIR ANGLE SUPPLY/STOP AND ESCUTCHEON PLATE. PROVIDE SLOAN "G2 OPTIMA PLUS" ELECTRONIC FLUSHMETER, CHROME SUPPLY AND WALL ESCUTCHEON PLATE.
P-4	2"	2"	3/4"	-	ELKAY ADA COMPLIANT, STAINLESS STEEL (LUSTER FINISH CABINET), WALL-MOUNTED DRINKING FOUNTAIN WITH INTEGRAL BACKSPASH # EHS5-A AND SELF-CLOSING, FRONT-MOUNTED CONTROL BAR. INCLUDE FLEX-GUARD SAFETY BUBBLER WITH HOODED STREAM PROJECTOR, AND REMOVABLE, PERFORATED BASIN DRAIN GRID. ELECTRIC POWER SUPPLY, CABLING AND CONNECTION TO EXISTING ELECTRIC PANEL BY ELECTRICAL CONTRACTOR.

- ### GENERAL NOTES
- PLUMBING CONTRACTOR SHALL SECURE AND PAY FOR A PLUMBING PERMIT FROM THE GOVERNING MUNICIPALITY AND STATE HEALTH DEPARTMENT.
 - PERFORM COMPLETE PLUMBING SYSTEM STERILIZATION PRIOR TO TURNING THE SYSTEM OVER TO THE OWNER FOR PUBLIC USE.
 - PERFORM ALL PLUMBING WORK ACCORDING TO THE IPC - INTERNATIONAL PLUMBING CODE; LATEST EDITION AND CITY OF PORTLAND, ME. REQUIREMENTS.
 - COORDINATE WORK OF THIS TRADE WITH THAT OF ALL OTHER TRADES
 - INSULATE ALL HORIZONTAL COLD WATER SUPPLY PIPING.
 - OPEN AND REMOVE EXISTING CONCRETE SLAB TO FACILITATE INSTALLATION OF NEW SOIL PIPING CONNECTED TO EXISTING SANITARY SEWER RISER ON THE WEST SIDE OF THE EXISTING BOILER IN THE BOILER ROOM.
 - INSTALL WATER HAMMER ARRESTORS AT ALL NEW LAVATORY AND HAND SINK LOCATIONS.
 - PROVIDE AND INSTALL SOLID BLOCKING FOR ALL PLUMBING FIXTURES, GRAB BARS, TOILET & URINAL PARTITIONS, AND TOILET ACCESSORIES; I.E. PAPER TOWEL & SOAP DISPENSERS AND MIRRORS.
 - CONNECT NEW PLUMBING SYSTEM VENT PIPING TO EXISTING LOBBY RESTROOM VENT PIPING IN THE UPPER CORNER OF THE LOBBY RESTROOM(S).

- ### PLUMBING LEGEND
- -
 -
 -
 -
 -
 -
 -
 -
 -
 -
 -
 -
 -
 -
 -
 -
 -
 -
 -
 -
 -
 -



FLOOR DRAIN DETAIL
NO SCALE

RELEASED FOR BIDDING - JANUARY 07, 2014
NOT FOR CONSTRUCTION

ST. BRIGID SCHOOL RESTROOM RETROFIT PROJECT FOR
CATHOLIC DIOCESE OF PORTLAND
695 STEVENS AVENUE
PORTLAND, MAINE

FHR-P-200



60% PROGRESS SET	SEPTEMBER 26, 2013
100% FOR BIDDING ONLY	JAN. 07, 2014

DAVID D. LEASURE - ARCHITECTURAL ASSOCIATES INC.
1344 WASHINGTON AVENUE PORTLAND, MAINE PH. (207) 797-8661 FAX (207) 797-8533
PROJECT NO. 082813 PROJECT TITLE: ST. BRIGID SCHOOL RESTROOM RETROFIT PROJECT
SCALE: 3/4" = 1'-0" SHEET TITLE: RESTROOM PLUMBING PLAN

THIS DRAWING HAS BEEN DEVELOPED BY DAVID D. LEASURE, ARCHITECTURAL ASSOCIATES INC. FOR THE RETROFIT PROJECT. NOT BE LOANED, REPRODUCED, COPIED, OR REPRODUCED IN ANY MANNER WITHOUT THE WRITTEN CONSENT OF D.D.L. & CO. ARCHITECTS. © 2013 DAVID D. LEASURE, ARCHITECTURAL ASSOCIATES INC. ALL RIGHTS RESERVED.

1/2" = 1'-0"