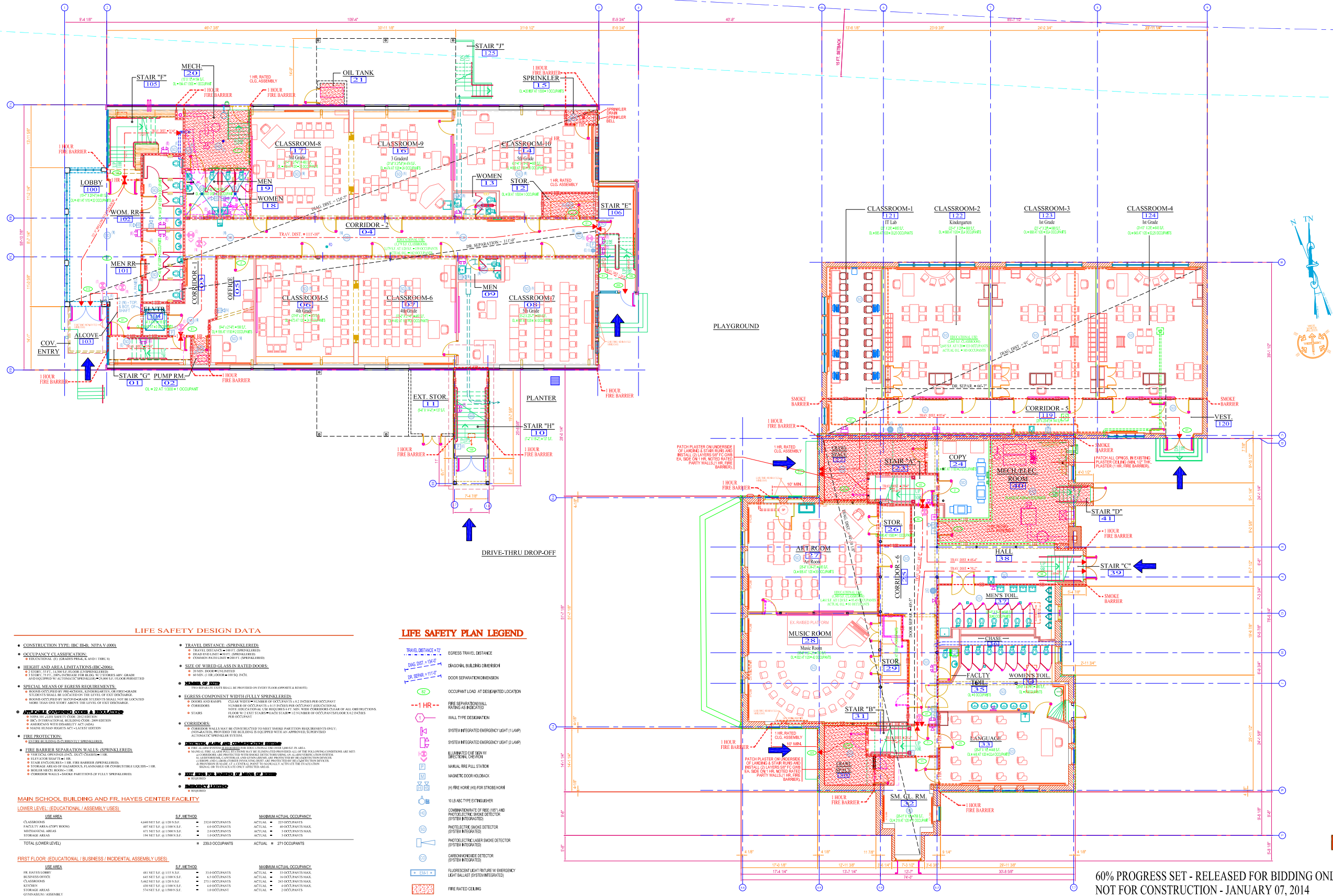




01	CONCEPT PLAN	SEPTEMBER 12, 2013
02	REVISED CONCEPTUAL PLAN	OCTOBER 15, 2013
03	REVISED CONCEPTUAL PLAN	NOVEMBER 15, 2013
04	RELEASED FOR BIDDING ONLY - JANUARY 07, 2014	



**LIFE SAFETY DESIGN DATA**

- CONSTRUCTION TYPE: IBC (II-B, NFPA V. 000)
- OCCUPANCY CLASSIFICATION: EDUCATIONAL, (GROUPS A, AND I) (IBC)
- HEIGHT AND AREA LIMITATIONS (IBC-2006): 3 STORY, 11' 0" MAX. HEIGHT FOR BELOW GRADE, 35' 0" MAX. HEIGHT FOR ABOVE GRADE, AND 450,000 SQ. FT. MAX. AREA FOR ABOVE GRADE.
- SPECIAL MEANS OF EGRESS REQUIREMENTS: ROOMS OCCUPIED BY PRE-ADOLESCENT CHILDREN, OR PRE-ADOLESCENT STUDENTS SHALL BE OCCUPIED ON THE LEVEL OF EXIT DISCHARGE. ROOMS OCCUPIED BY ADOLESCENT STUDENTS SHALL NOT BE LOCATED MORE THAN ONE STORY ABOVE THE LEVEL OF EXIT DISCHARGE.
- APPLICABLE COVERING CODES & REGULATIONS: NFPA 101 LIFE SAFETY CODE, 2012 EDITION; IBC INTERNATIONAL BUILDING CODE, 2009 EDITION; AMERICAN WITH DISABILITIES ACT (ADA); MAINE BUILDING CODE ACT LATEST EDITION.
- FIRE PROTECTION: FIRE RESISTANCE RATED WALLS (SPRINKLERED): VERTICAL PENETRATIONS (DUCT CHIMNEYS) - 1 HR; STAIR ENCLOSURES - 1 HR FIRE BARRIER (SPRINKLERED); STORAGE AREAS OF HAZARDOUS FLAMMABLE OR COMBUSTIBLE LIQUIDS - 1 HR; BOLLARD BUILT ROOMS - 1 HR; CORRIDOR WALLS - FIRE PARTITIONS OF 1 HR (SPRINKLERED).

**LIFE SAFETY PLAN LEGEND**

- TRAVEL DISTANCE = 72'
- EGRESS TRAVEL DISTANCE
- DIAGONAL BUILDING DIMENSION
- DOOR SEPARATION DIMENSION
- OCCUPANT LOAD AT DESIGNATED LOCATION
- FIRE SEPARATION WALL RATING AS INDICATED
- WALL TYPE DESIGNATION
- SYSTEM INTEGRATED EMERGENCY LIGHT (1) (AMP)
- SYSTEM INTEGRATED EMERGENCY LIGHT (2) (AMP)
- ILLUMINATED EXIT SIGN OR EGRESS SIGN
- MANUAL FIRE PULL STATION
- WANDERER DOOR HODDLOCK
- 1 1/2" FIRE HOSE (HS) FOR STROBEHORN
- 1 1/2" A-B-C TYPE EXTINGUISHER
- COMBINATION RATE OF FLOW TEST AND PHOTOELECTRIC SMOKE DETECTOR (SYSTEM INTEGRATED)
- PHOTOELECTRIC SMOKE DETECTOR (SYSTEM INTEGRATED)
- PHOTOELECTRIC LASER SMOKE DETECTOR (SYSTEM INTEGRATED)
- CARBON MONOXIDE DETECTOR (SYSTEM INTEGRATED)
- FLOURESCENT LIGHT FIXTURE W/ EMERGENCY LIGHT BALLAST (SYSTEM INTEGRATED)
- FIRE RATED CEILING
- ROOM NAME & NUMBER
- EXISTING COMPONENT OR DEVICE
- REMOVE EXISTING COMPONENT OR DEVICE
- NEW COMPONENT OR DEVICE

MAIN SCHOOL BUILDING AND FR. HAYES CENTER FACILITY			
LOWER LEVEL (EDUCATIONAL / ASSEMBLY USES)			
USE AREA	S.F. METHOD	MAXIMUM ACTUAL OCCUPANCY	ACTUAL
CLASSROOMS	448 NET S.F. @ 1200 S.F.	224 OCCUPANTS	224 OCCUPANTS
FACULTY / ADMINISTRATION	487 NET S.F. @ 1200 S.F.	406 OCCUPANTS	406 OCCUPANTS MAX.
MEDIA/STORAGE AREAS	471 NET S.F. @ 1200 S.F.	236 OCCUPANTS	236 OCCUPANTS MAX.
STORAGE AREAS	174 NET S.F. @ 1200 S.F.	145 OCCUPANTS	145 OCCUPANTS
<b>TOTAL LOWER LEVEL</b>		<b>2011 OCCUPANTS</b>	<b>2011 OCCUPANTS</b>
FIRST FLOOR (EDUCATIONAL / BUSINESS / INCIDENTAL ASSEMBLY USES)			
USE AREA	S.F. METHOD	MAXIMUM ACTUAL OCCUPANCY	ACTUAL
FR. HAYES CENTER	481 NET S.F. @ 1200 S.F.	401 OCCUPANTS	401 OCCUPANTS
BUSINESS OFFICE	443 NET S.F. @ 1200 S.F.	369 OCCUPANTS	369 OCCUPANTS MAX.
CLASSROOMS	540 NET S.F. @ 1200 S.F.	450 OCCUPANTS	450 OCCUPANTS MAX.
STORAGE AREAS	174 NET S.F. @ 1200 S.F.	145 OCCUPANTS	145 OCCUPANTS
GYMNASIUM ASSEMBLY	114,000 NET S.F. @ 1700 S.F.	66,471 OCCUPANTS	66,471 OCCUPANTS MAX.
STADIUM SEATING AREA	492 NET S.F. @ 17 S.F.	28,941 OCCUPANTS	28,941 OCCUPANTS
STAIR	174 NET S.F. @ 1200 S.F.	145 OCCUPANTS	145 OCCUPANTS
<b>TOTAL 1<sup>ST</sup> FLOOR LEVEL</b>		<b>8074 OCCUPANTS</b>	<b>8111 OCCUPANTS</b>
SECOND FLOOR (EDUCATIONAL / LIBRARY USES)			
USE AREA	S.F. METHOD	MAXIMUM ACTUAL OCCUPANCY	ACTUAL
LIBRARY	78 NET S.F. @ 1200 S.F.	65 OCCUPANTS	65 OCCUPANTS
CLASSROOMS	2,712 NET S.F. @ 1200 S.F.	2,260 OCCUPANTS	2,260 OCCUPANTS MAX.
<b>TOTAL (SECOND FLOOR LEVEL)</b>		<b>2,325 OCCUPANTS</b>	<b>2,325 OCCUPANTS</b>
<b>TOTAL OCCUPANCY (LOCAL BUILDINGS &amp; ALL FLOORS)</b>		<b>12,614 OCCUPANTS</b>	<b>12,800 OCCUPANTS (MAXIMUM)</b>

**LOWER LEVEL - LIFE SAFETY PLAN**



60% PROGRESS SET - RELEASED FOR BIDDING ONLY  
NOT FOR CONSTRUCTION - JANUARY 07, 2014

ST. BRIGID SCHOOL - RESTROOM PROJECT  
CATHOLIC DIOCESE OF PORTLAND  
695 STEVENS AVENUE  
PORTLAND, MAINE

**DAVID D. LEASURE - ARCHITECTURAL ASSOCIATES INC.**  
1344 WASHINGTON AVENUE PORTLAND, MAINE PH. (207) 797-8661 FAX (207) 797-8533  
PROJECT NO: 082713 PROJECT TITLE: ST. BRIGID SCHOOL - RESTROOM PROJECT  
SCALE: 1/8" = 1'-0" SHEET TITLE: LOWER LEVEL - LIFE SAFETY PLAN



THIS DRAWING HAS BEEN DEVELOPED BY DAVID D. LEASURE ARCHITECTURAL ASSOCIATES INC. AND IS THE PROPERTY OF DAVID D. LEASURE ARCHITECTURAL ASSOCIATES INC. NO PART OF THIS DRAWING IS TO BE REPRODUCED OR TRANSMITTED IN ANY FORM OR BY ANY MEANS, ELECTRONIC OR MECHANICAL, WITHOUT THE WRITTEN PERMISSION OF DAVID D. LEASURE ARCHITECTURAL ASSOCIATES INC. ALL RIGHTS RESERVED.