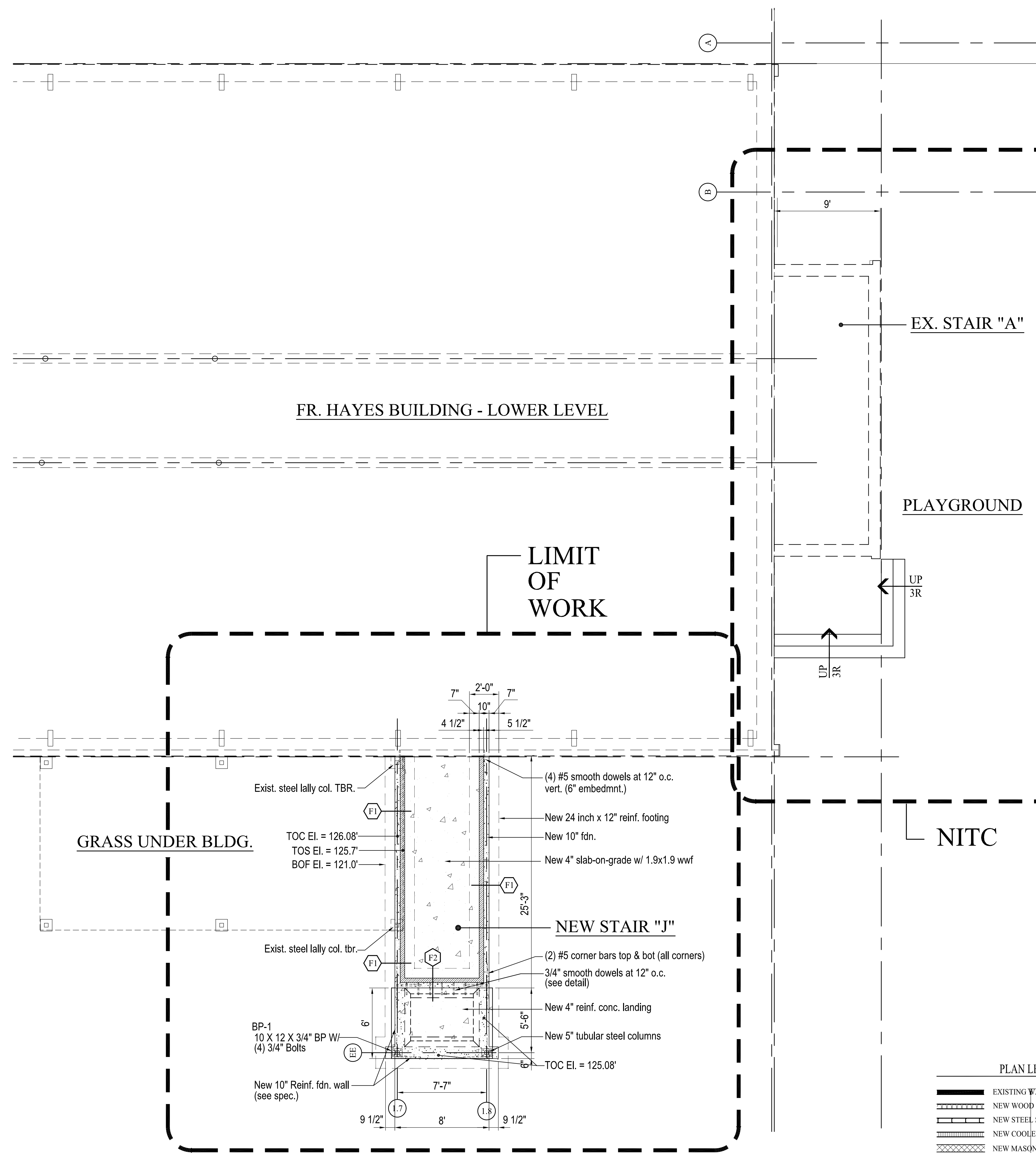
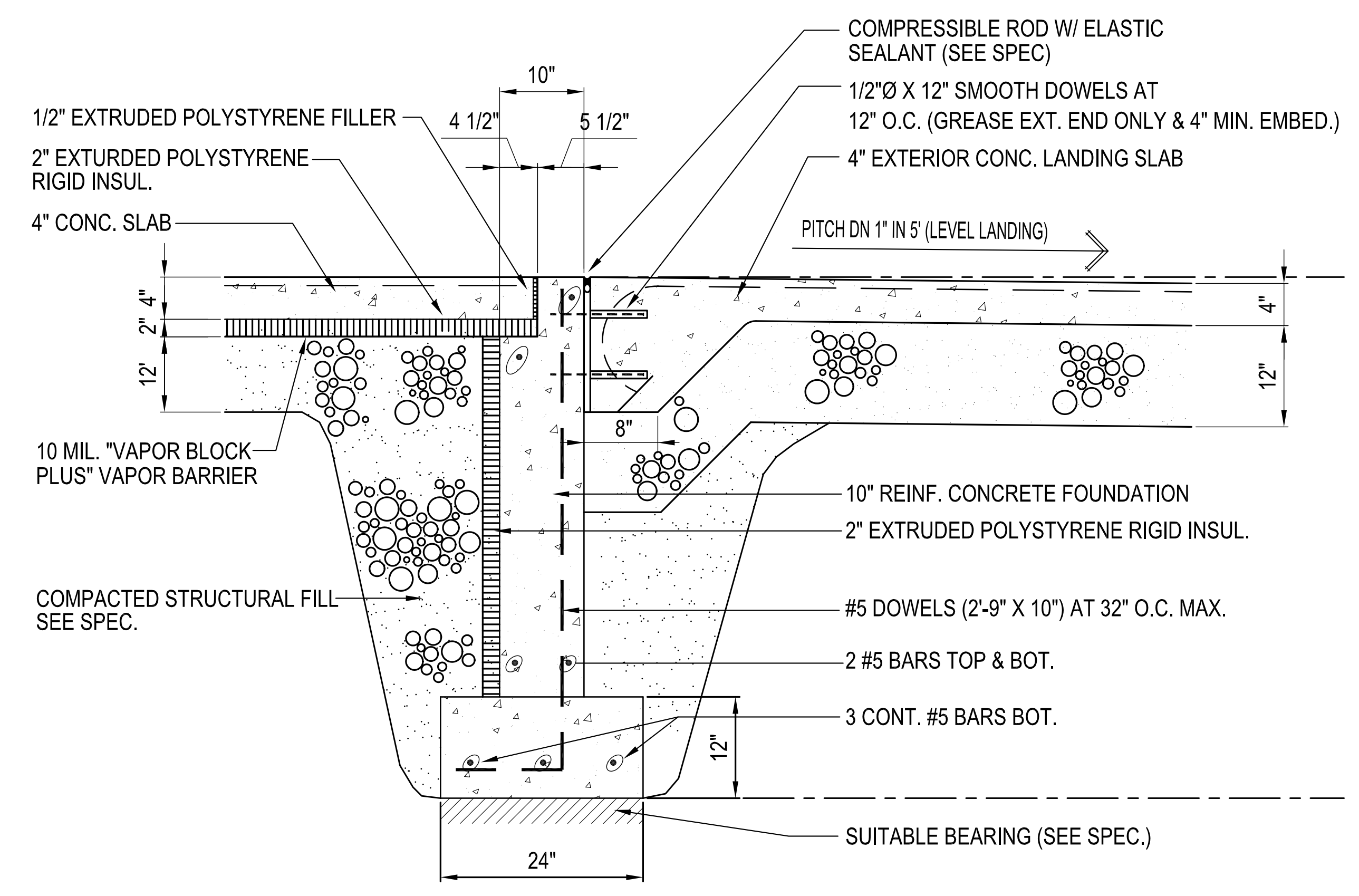
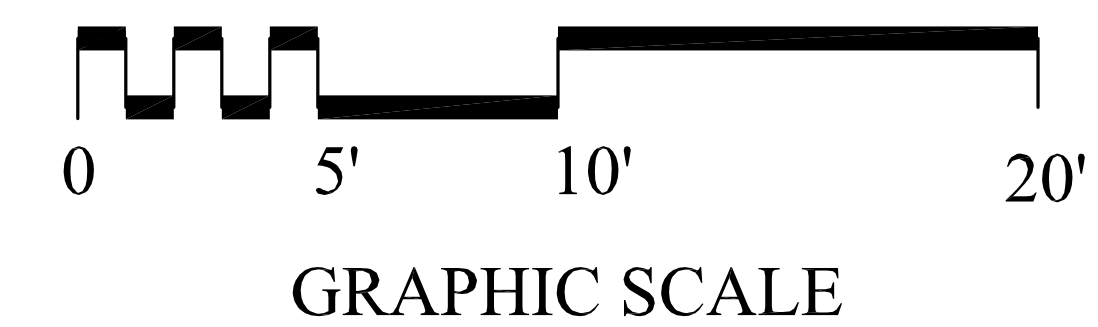


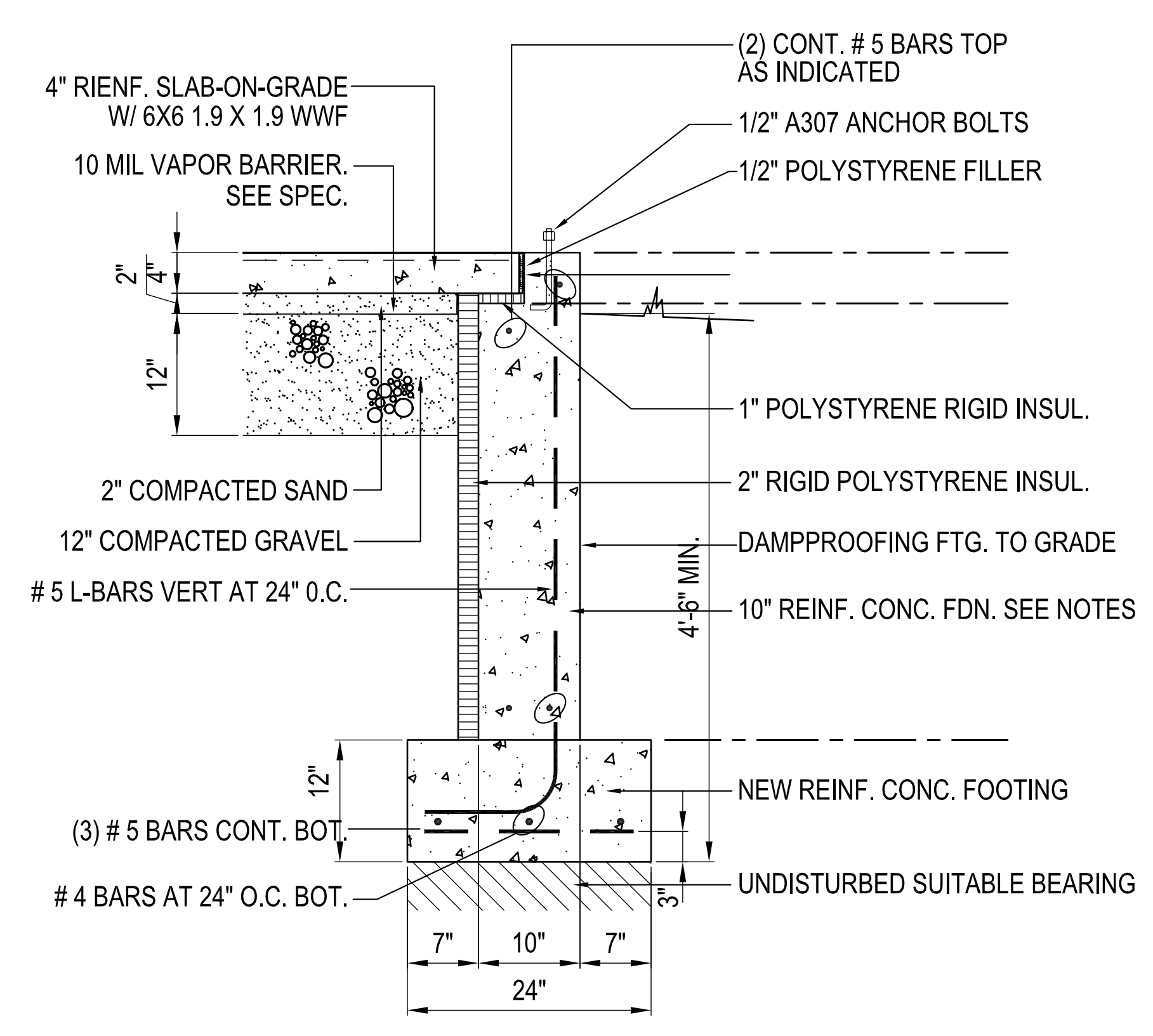
CONCEPTUAL PLANS	MAY 06, 2012
50% PROGRESS DRAWING	MAY 16, 2012
ADD ALL FLOOR LOWER	MAY 21, 2012
REV. PER ARCHITECT REVIEW	JUNE 25, 2012
REV. PER STRUCTURE REVIEW	JUNE 25, 2012



FOUNDATION PLAN - FR. HAYES STAIR
1/4" = 1'-0"



F2 EXTERIOR LANDING AT FOUNDATION
1" = 1'-0"



F1 NEW FOUNDATION WALL
1" = 1'-0"

PLAN LEGEND

	EXISTING WALL TO REMAIN
	NEW WOOD STUD WALL
	NEW STEEL STUD WALL
	NEW COOLER PANEL WALL
	NEW MASONRY (CMU) WALL
	NEW BRICK VENEER / STEEL STUD WALL
	EXISTING BRICK WALL TO REMAIN
	EXISTING MASONRY (CMU) WALL
	EXISTING WALL TO BE DEMOLISHED
	NEW BUILDING ADDITIONS
(E)	EXISTING DEVICE OR COMPONENT
(N)	NEW DEVICE OR COMPONENT
(R)	DEVICE OR COMPONENT TO BE REMOVED



REL. FOR PRICING & PERMITTING - JUNE 25, 2012
NOT FOR CONSTRUCTION

FR. HAYES STAIR RETROFIT PROJECT
695 STEVENS AVENUE
PORTLAND, MAINE 04103

FH-F-200 R1

DAVID D. LEASURE - ARCHITECTURAL ASSOCIATES INC.
1344 WASHINGTON AVENUE PORTLAND, MAINE PH. (207) 797-8661 FAX (207) 797-8333
PROJECT NO. 080111 PROJECT TITLE: ST. BRIGID SCHOOL RENOVATION
SCALE: 1/4" = 1'-0" SHEET TITLE: FR. HAYES STAIR - FOUNDATION PLAN

THIS DRAWING HAS BEEN DEVELOPED BY DAVID D. LEASURE, ARCHITECTURAL ASSOCIATES INC. FOR THE TRUSTEES OF ST. BRIGID SCHOOL. THE TRUSTEES OF ST. BRIGID SCHOOL AND ST. BRIGID SCHOOL ASSOCIATION ARE NOT BE HELD RESPONSIBLE FOR ANY ERRORS OR OMISSIONS. THE TRUSTEES OF ST. BRIGID SCHOOL AND ST. BRIGID SCHOOL ASSOCIATION ARE NOT BE HELD RESPONSIBLE FOR ANY ERRORS OR OMISSIONS. THE TRUSTEES OF ST. BRIGID SCHOOL AND ST. BRIGID SCHOOL ASSOCIATION ARE NOT BE HELD RESPONSIBLE FOR ANY ERRORS OR OMISSIONS. THE TRUSTEES OF ST. BRIGID SCHOOL AND ST. BRIGID SCHOOL ASSOCIATION ARE NOT BE HELD RESPONSIBLE FOR ANY ERRORS OR OMISSIONS.