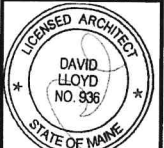


GROWING LEARNERS DOOR SCHEDULE

DOOR No.	LOCATION	SIZE			DOOR LEAF			DOOR FRAME			THRESHO LD	LABEL	OPERATION	CLOSER	REMARKS
		WIDTH	HEIGHT	THICKNESS	TYPE	MATERIA L	FINISH	MATERIAL	FINISH						
1ST FLOOR															
01	STAFF	3'-0"	7'-0"	1 3/4"	1	SCW	POLY	HM	PTD	ALUM		PRIVACY			
02	STAFF	3'-0"	7'-0"	1 3/4"	2	SCW	POLY	HM	PTD	ALUM		PASSAGE			
03	STAFF	3'-0"	7'-0"	1 3/4"	2	SCW	POLY	HM	PTD	ALUM		PASSAGE			
04	STAFF	3'-0"	7'-0"	1 3/4"	1	SCW	POLY	HM	PTD	ALUM		PASSAGE			
05	PRE-SCHOOL	3'-0"	3'-6"	1 3/4"	3	SCW	POLY	HM	PTD	ALUM		PASSAGE			
06	TODDLER	3'-0"	7'-0"	1 3/4"	1	SCW	POLY	HM	PTD	ALUM		PASSAGE			
07	TODDLER	3'-0"	3'-6"	1 3/4"	3	SCW	POLY	HM	PTD	ALUM		PASSAGE			
08	TODDLER	3'-0"	3'-6"	1 3/4"	3	SCW	POLY	HM	PTD	ALUM		PASSAGE			
09	WADDLER	3'-0"	7'-0"	1 3/4"	1	SCW	POLY	HM	PTD	ALUM		PASSAGE			
10	WADDLER	3'-0"	7'-0"	1 3/4"	1	SCW	POLY	HM	PTD	ALUM		PASSAGE	Yes	POSITIVE LATCH	
11	LARGE MOTOR/MULTI USE	3'-0"	7'-0"	1 3/4"	1	SCW	POLY	HM	PTD	ALUM		PASSAGE	Yes	POSITIVE LATCH	
12	INFANT	3'-0"	7'-0"	1 3/4"	1	SCW	POLY	HM	PTD	ALUM		PASSAGE	Yes	POSITIVE LATCH	
13	INFANT	3'-0"	7'-0"	1 3/4"	1	SCW	POLY	HM	PTD	ALUM		PASSAGE	Yes	POSITIVE LATCH	
14	OLDER TODDLERS	3'-0"	3'-6"	1 3/4"	3	SCW	POLY	HM	PTD	ALUM		PASSAGE	Yes	POSITIVE LATCH	



Reviewed for Code Compliance
Permitting and Inspections Department
Approved with Conditions
05/13/2020



Prepared For:
**DEVELOPERS
COLLABORATIVE**

Consultant:

ARCHETYPE
architects
48 Union Wharf Portland, Maine 04101
(207) 771-6022 ARCHETYPE@ARCHETYPEPA.COM

Project:
**GROWING
LEARNERS**

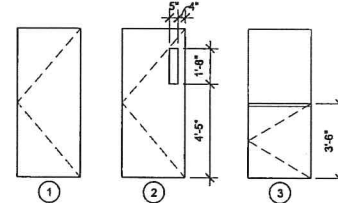
Revisions:

Date: 11/4/2019
Scale: As indicated
**PHASE 1 FIRST FLOOR
PLAN**

Date: 11/4/2019
Scale: As indicated
**PHASE 1 FIRST FLOOR
PLAN**

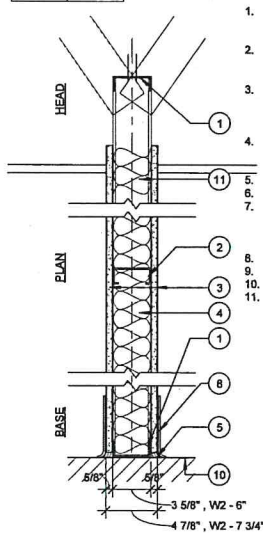
A1.1

DOOR TYPES



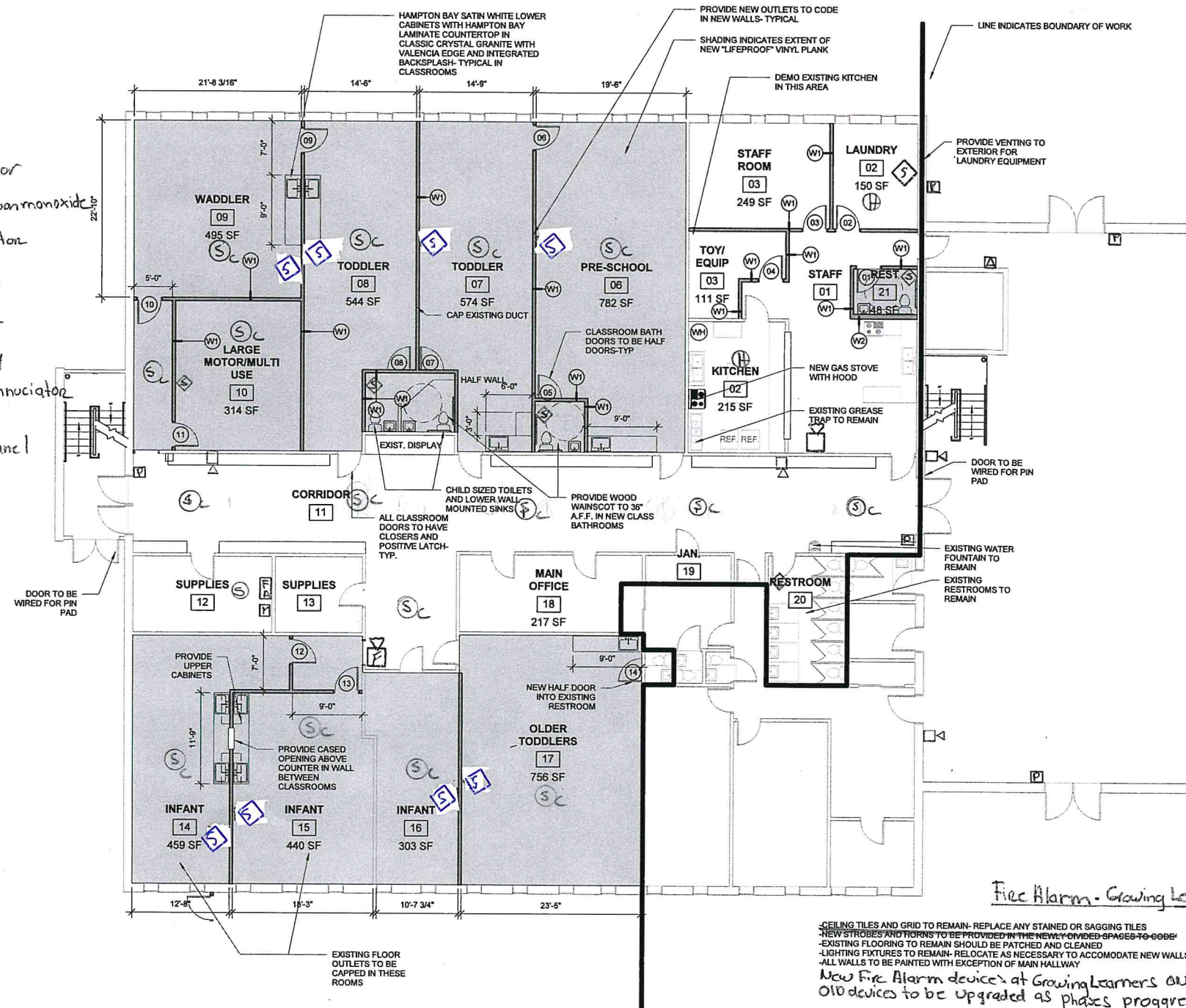
- Ⓜ Heat Detector
- Ⓢc Smoke/Carbon monoxide
- Ⓢ Smoke Detector
- Ⓟ Pull Station
- Ⓚ Horn Strobe
- Ⓢ Strobe Only
- Ⓜ Remote Annunciator
- Ⓚ Knox box
- Ⓜ Fire Alarm Panel
- Ⓜ Master box

W1	W2
3 5/8"	6"



2 | WALL TYPE 1 & 2
1 1/2" = 1'-0"

1. CONT. METAL FLOOR AND CEILING RUNNER - CHANNEL SHAPED 3 5/8" 25 MSG STEEL WITH 1 1/4" LONG LEGS FASTENERS @ 2'-0" O.C. MAX. WITHIN 1" OF ENDS
2. STEEL STUDS - CHANNEL SHAPED 25 MSG STEEL 3 5/8" STUDS SPACED MAX. 24" O.C. RUN TO 2" ABOVE FINISHED CEILING (USE 6" STUD AT W2 WALLS)
3. GYPSUM BOARD - (1) LAYER 5/8" GYP. BD. EACH SIDE TO 12" ABOVE CEILING, PAPER SURFACED, APPLIED PERPENDICULAR TO FRAMING WITH 1" TYPE S STEEL SCREWS SPACED 8" O.C. SEE NOTES FOR GYP. BD. TYPE
4. SOUND ATTENUATION BATT - FIBERGLASS BATT WITH UL CLASS AS TO SURFACE BURNING CHARACTERISTICS AND OR FIRE RESISTANCE REQUIRED
5. SEALANT - ACOUSTIC SEALANT BOTH SIDES
6. BLOCKING - (NOT SHOWN) WOOD BLOCKING AS NEEDED
7. TAPE AND COMPOUND - (NOT SHOWN) VINYL DRY OR PREMIXED JOINT COMPOUND, APPLIED IN TWO COATS TO JOINTS AND SCREW HEADS, PAPER TAPE, 2 IN. WIDE, EMBEDDED IN FIRST LAYER OF COMPOUND OVER ALL JOINTS.
8. BASE - SEE FINISH SCHEDULE
9. UNDERSIDE OF STRUCTURE
10. TOP OF STRUCTURE
11. SOUND ATTENUATION BATT - FIBERGLASS BATT WITH UL CLASS AS TO SURFACE BURNING CHARACTERISTICS AND OR FIRE RESISTANCE REQUIRED.



1 1ST FLOOR PROPOSED
1/8" = 1'-0"

Fire Alarm - Growing Learners

CEILING TILES AND GRID TO REMAIN - REPLACE ANY STAINED OR SAGGING TILES
NEW STROBES AND TOWNS TO BE PROVIDED IN THE NEWLY OWNED SPACES TO GO
EXISTING FLOORING TO REMAIN SHOULD BE PATCHED AND CLEANED
LIGHTING FIXTURES TO REMAIN - RELOCATE AS NECESSARY TO ACCOMMODATE NEW WALLS
ALL WALLS TO BE PAINTED WITH EXCEPTION OF MAIN HALLWAY
New Fire Alarm devices at Growing Learners only
Old devices to be upgraded as phases progress