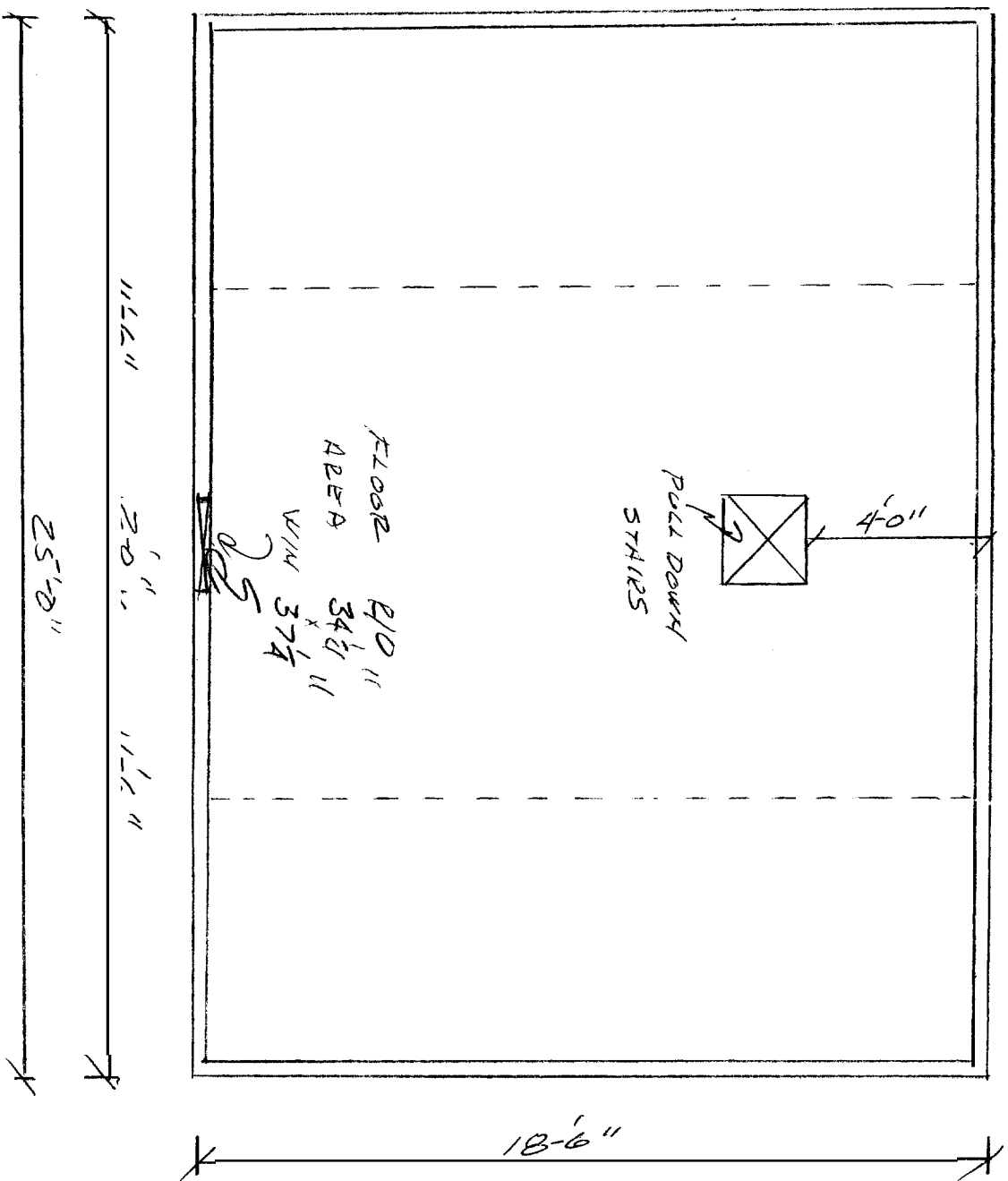

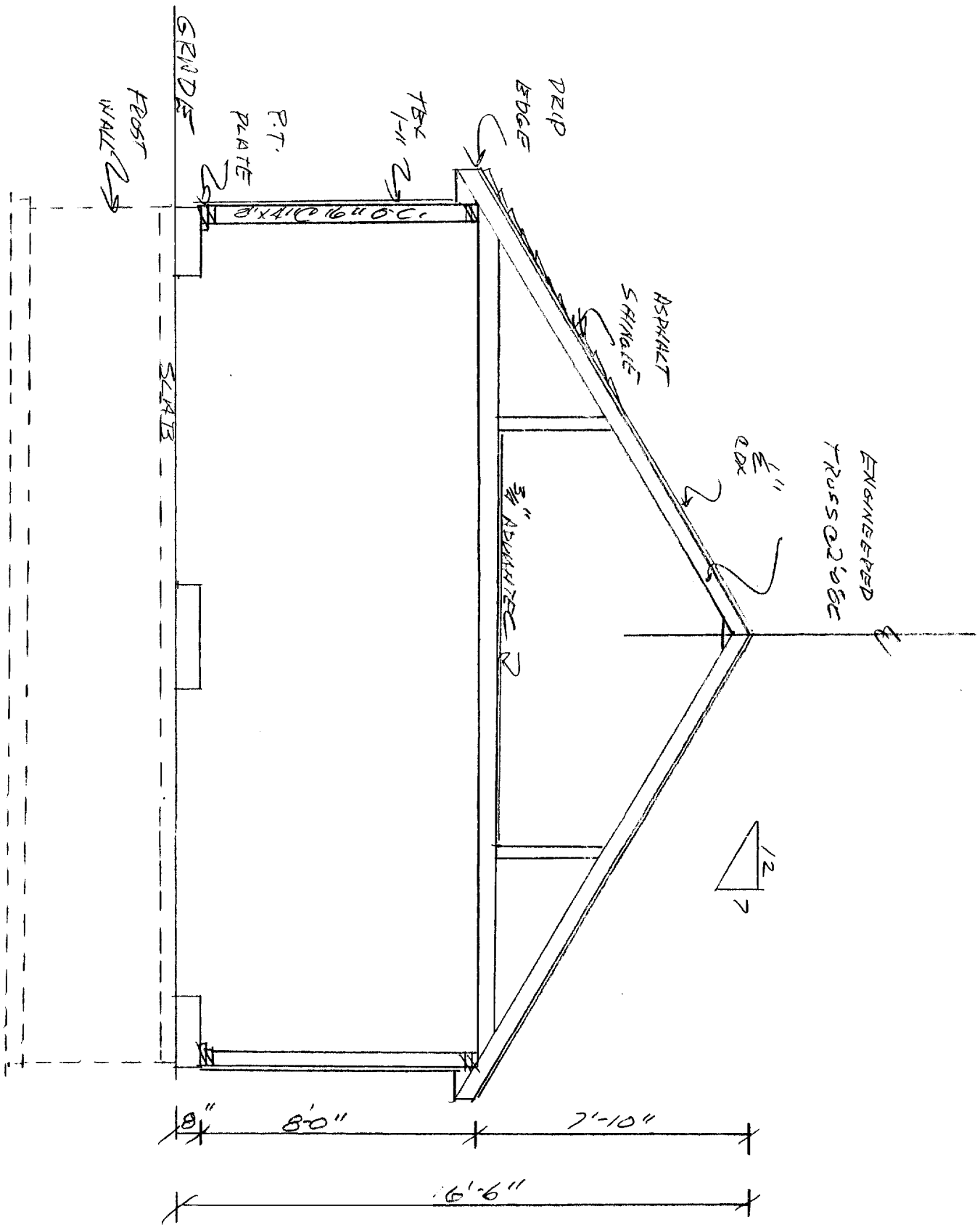

 MAINE-FIDE CONSTRUCTION, INC.		Scale	1/4" = 1'-0"
		Date	1-24-08
Drawn For	ROBERTSON	Approved By	J. HODG
Location	PORTLAND, ME	Drawn By	J.C.
		Revised	
		Drawing #	1



 RAINE-WIDE CONSTRUCTORS, INC.	
Scale 1/4" = 1'-0"	Approved By <i>J.C.</i>
Date 12/18/06	Drawn By <i>J.C.</i>
Drawn For <i>ARDE 25041</i>	Revised
Location <i>PORTLAND, ME.</i>	Drawing # <i>2</i>



 MAINE-WIDE CONSTRUCTION, INC.		Scale	1/4" = 1'-0"
		Date	4-24-06
Drawn For	ANDERSON	Approved By	ROSS SEET
Location	DOVER, NH	Drawn By	TC
		Revised	
		Drawing #	5

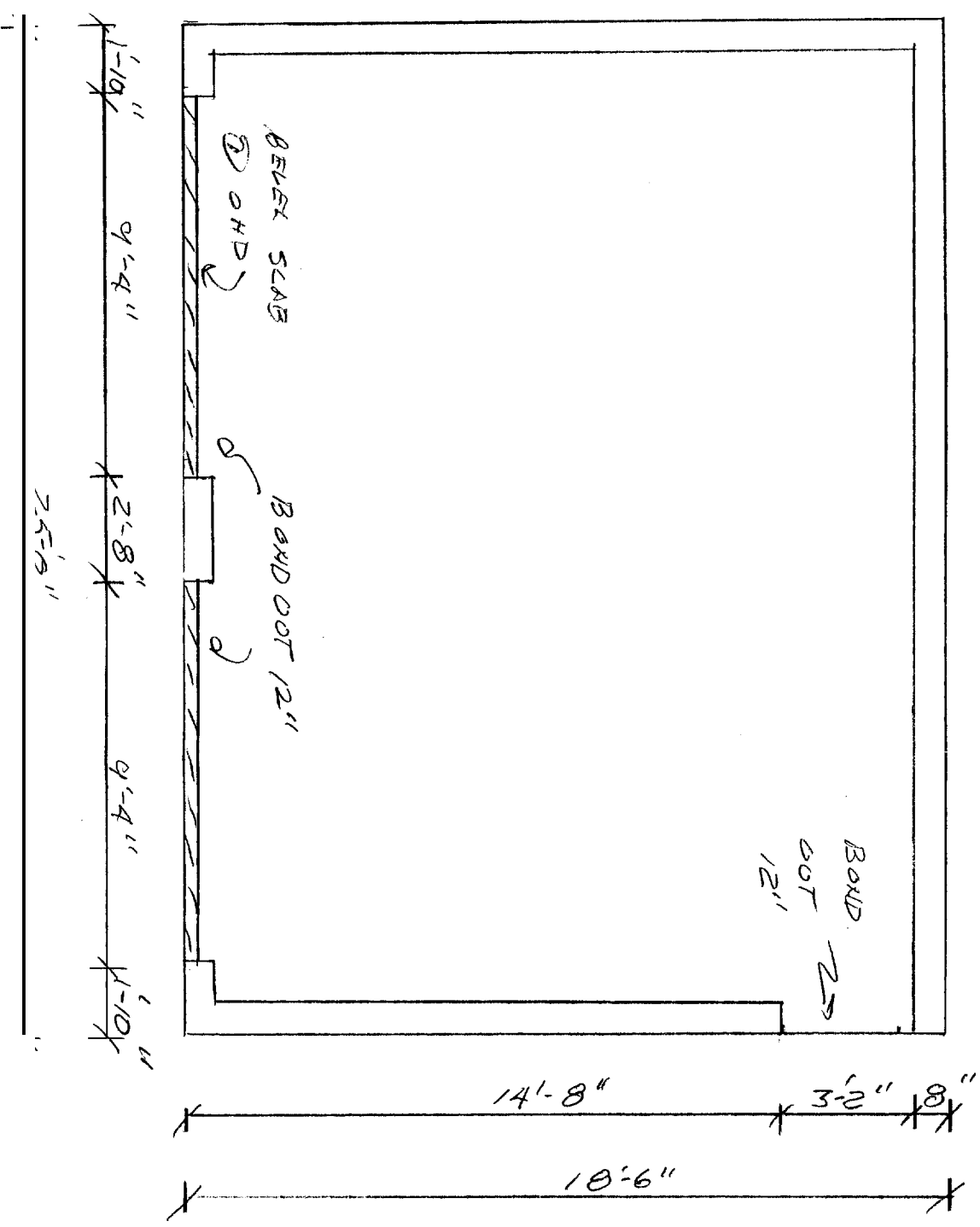
Christina Anderson
(207) 878 - 8783

Site Address
51 Tremaine St.
Portland, ME 04103

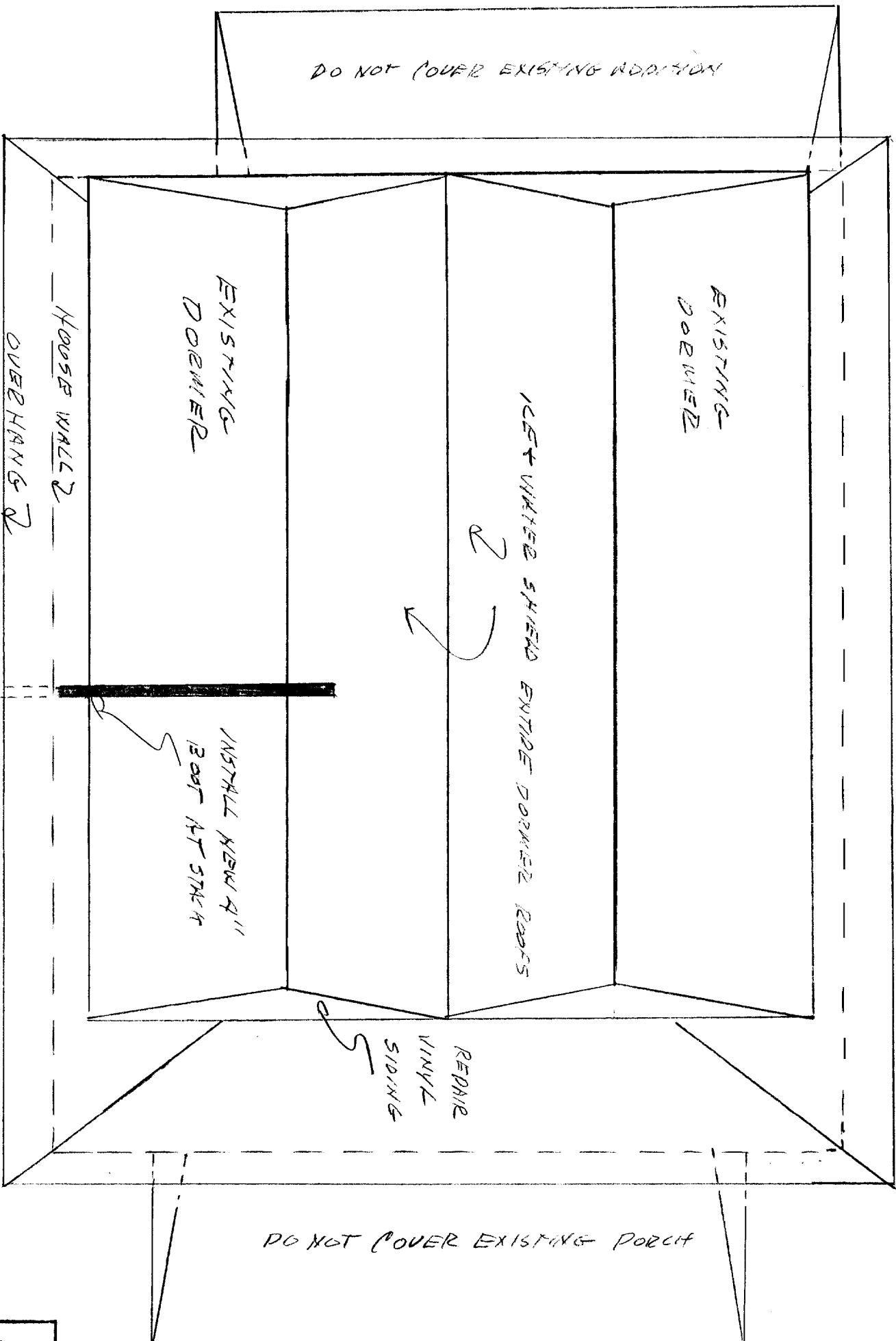
Job Number: 2006-125
Date: 04/25/06


**FOUNDATION
INSTRUCTIONS**

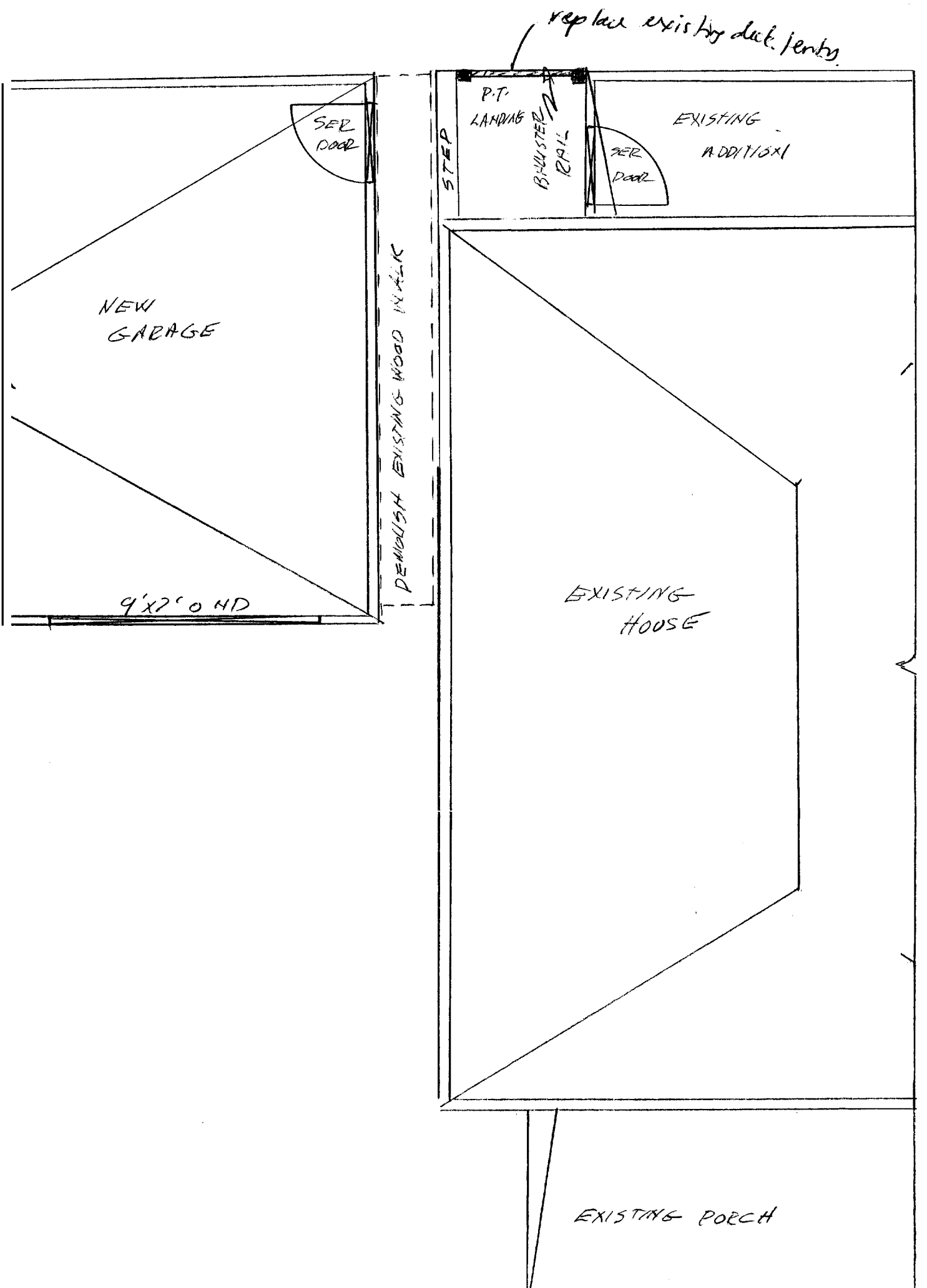
1. See drawing for exact location of building
2. Pour 5'-0" frostwall
3. Bond out for door 12"
4. Pour 4" slab over top of bondouts
5. Set anchor bolts at corners openings & 6'-0" OC
6. Leave nuts & washers on bolts
7. If you have any questions call Tim or Judy at 1-800-452-1940



MAINE-WIDE CONSTRUCTORS, INC.	
Scale: 3/4" = 1'-0"	Approved By: <i>ROBERT W. W. W.</i>
Date: 4-25-06	Drawn By: <i>TC</i>
Drawn For: <i>ANDERSON</i>	Revised:
Location: <i>PORTLAND, ME</i>	Drawing # <i>4</i>



		MAINE-WIDE CONSTRUCTORS, INC.	
Scale	3/16" = 1'-0"	Approved By	TC
Date	1-25-06	Drawn By	TC
Drawn For	ANDERSON	Reviewed	
Location	DOVER	Drawing #	5



		MAINE-WIDE CONSTRUCTION, INC.	
Scale 1/4" = 1'-0"	Approved By	Drawn By	TC
Date 4-25-06	POBCH	Revised	
Drawn For	ANDERSON		
Location	PORTLAND, ME.	Drawing #	6

Christina Anderson
 (207) 878 - 8783

Site Address

51 Tremaine St.
 Portland, ME 04103

Job Number: 2006-125
 Date: 04/25/06

ADDITIONAL INSTRUCTIONS

LANDING & STEPS

1. Demolish existing walkway & existing landing
2. Step existing landing down 6" below bottom of existing door
3. Edge of step to be even with rear corner of house
4. Install balluster rail
5. All material pressure treated