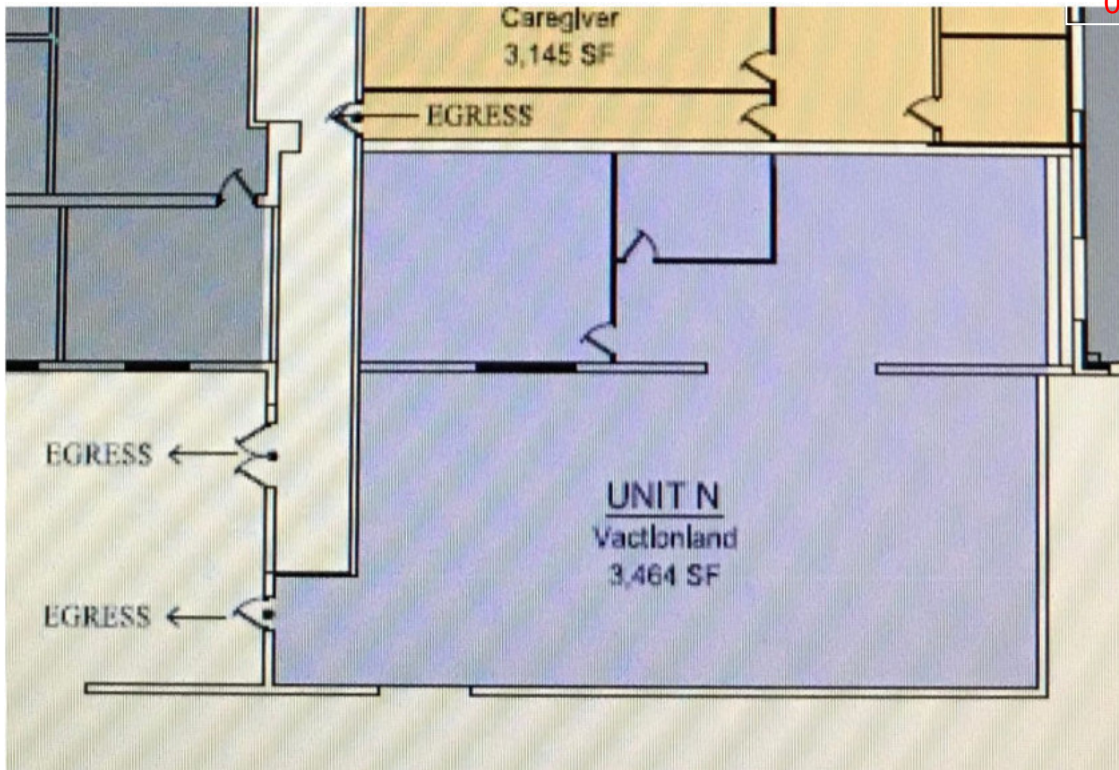




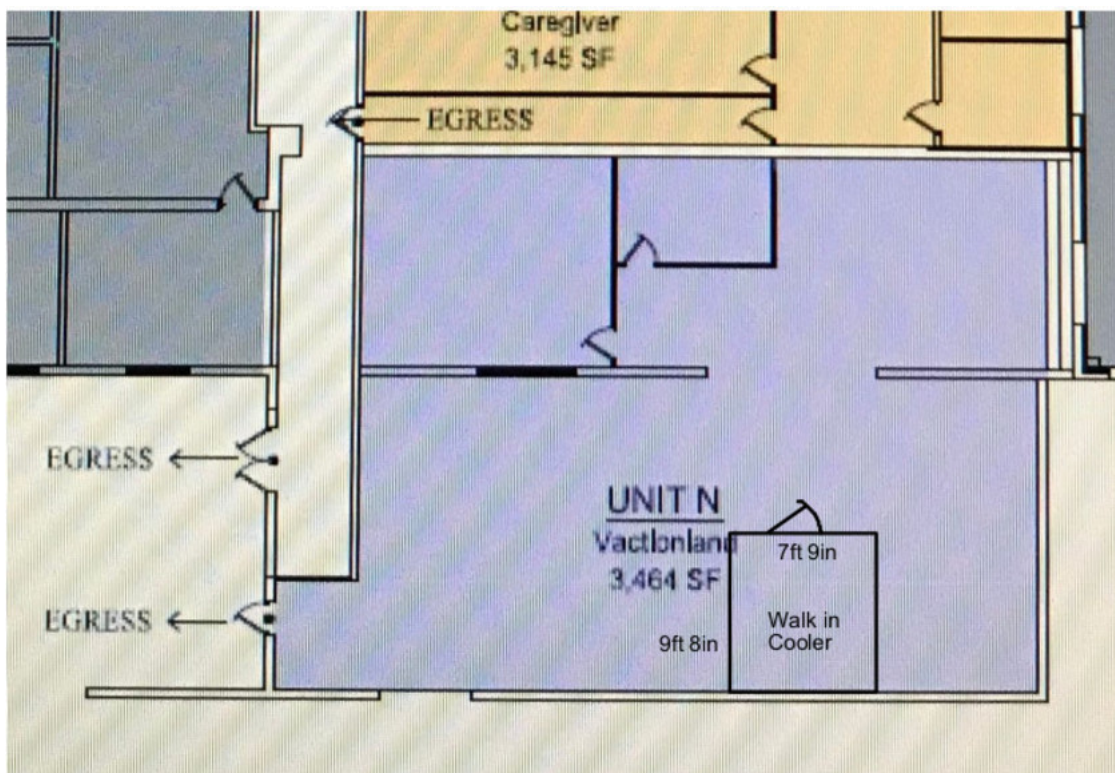
Warehouse Layout

Reviewed for Code Compliance
Permitting and Inspections Department
Approved with Conditions

07/30/2018



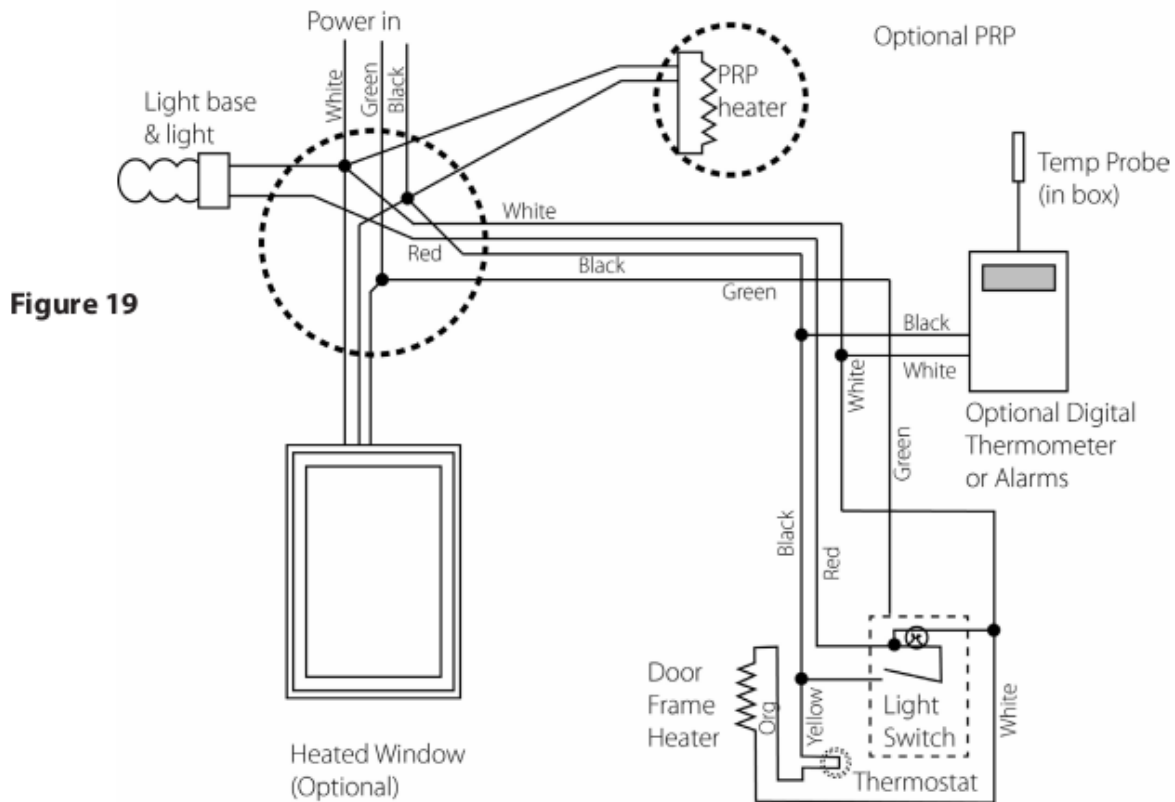
Warehouse Layout with Cooler Placement





07/30/2018

Cooler Electrical Installation Schematic



Color Codes:

Black – Line

White – Neutral

Green – Ground

Red – From switch to light

Orange – } Wires for -3 and -4 way switches.

Grey – } Connect like colors to complete the circuit.



07/30/2018

Cooler Wall Installation Schematics

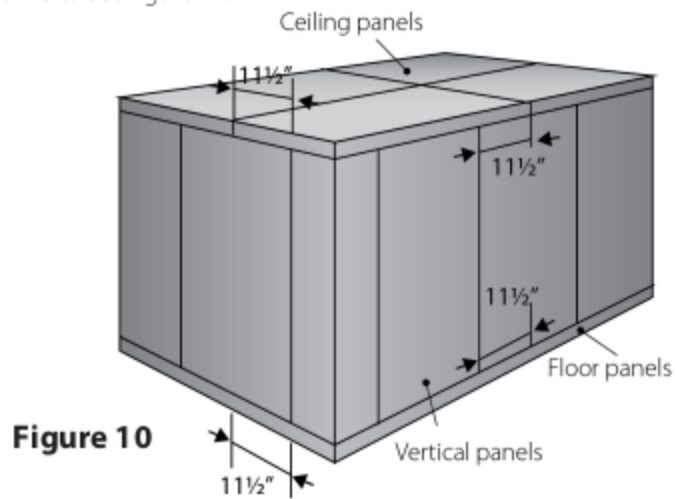
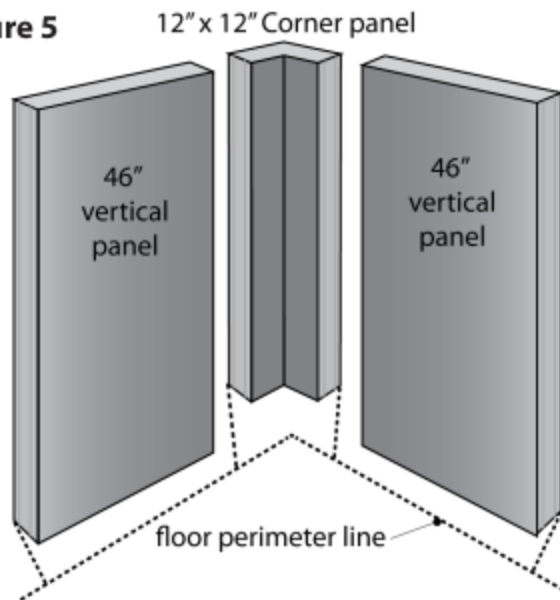


Figure 5





07/30/2018

Electrical Specs of Cooling Unit (Model No. Highlighted)

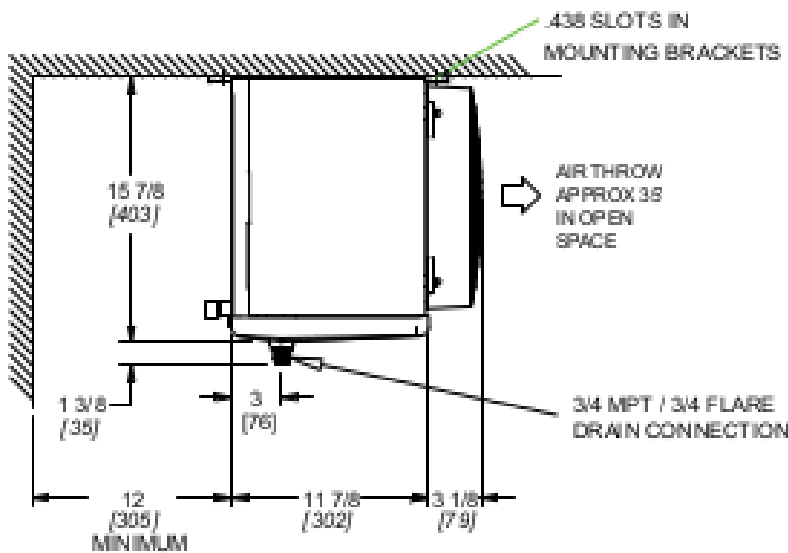
TPLP

ELECTRICAL DATA 115/1/60 - AIR DEFROST MODELS

60Hz

MODEL TPLP	FPI	FAN MOTORS										
		QTY.	PSC MOTORS					EC MOTORS				
			HP	FLA TOTAL	WATTS	MIN. CIRC. AMPACITY (A)	MAX. FUSE (AMPS)	HP	FLA TOTAL	WATTS	MIN. CIRC. AMPACITY (A)	MAX. FUSE (AMPS)
104MAS1		1	1/15	1.0	100	1.3	15	1/15	1.0	60	1.3	15
106MAS1		1	1/15	1.0	100	1.3	15	1/15	1.0	60	1.3	15
107MAS1		1	1/15	1.0	100	1.3	15	1/15	1.0	60	1.3	15
209MAS1		2	1/15	2.0	200	2.3	15	1/15	2.0	120	2.3	15
211MAS1		2	1/15	2.0	200	2.3	15	1/15	2.0	120	2.3	15
214MAS1		2	1/15	2.0	200	2.3	15	1/15	2.0	120	2.3	15
317MAS1	6	3	1/15	3.0	300	3.3	15	1/15	3.0	180	3.3	15
320MAS1		3	1/15	3.0	300	3.3	15	1/15	3.0	180	3.3	15
423MAS1		4	1/15	4.0	400	4.3	15	1/15	4.0	240	4.3	15
426MAS1		4	1/15	4.0	400	4.3	15	1/15	4.0	240	4.3	15
532MAS1		5	1/15	5.0	500	5.3	15	1/15	5.0	300	5.3	15
639MAS1		6	1/15	6.0	600	6.3	15	1/15	6.0	360	6.3	15

Cooling Unit Dimensions





Cooling Unit Cooling Specifications

Reviewed for Code Compliance
 Permitting and Inspections Department
 Approved with Conditions

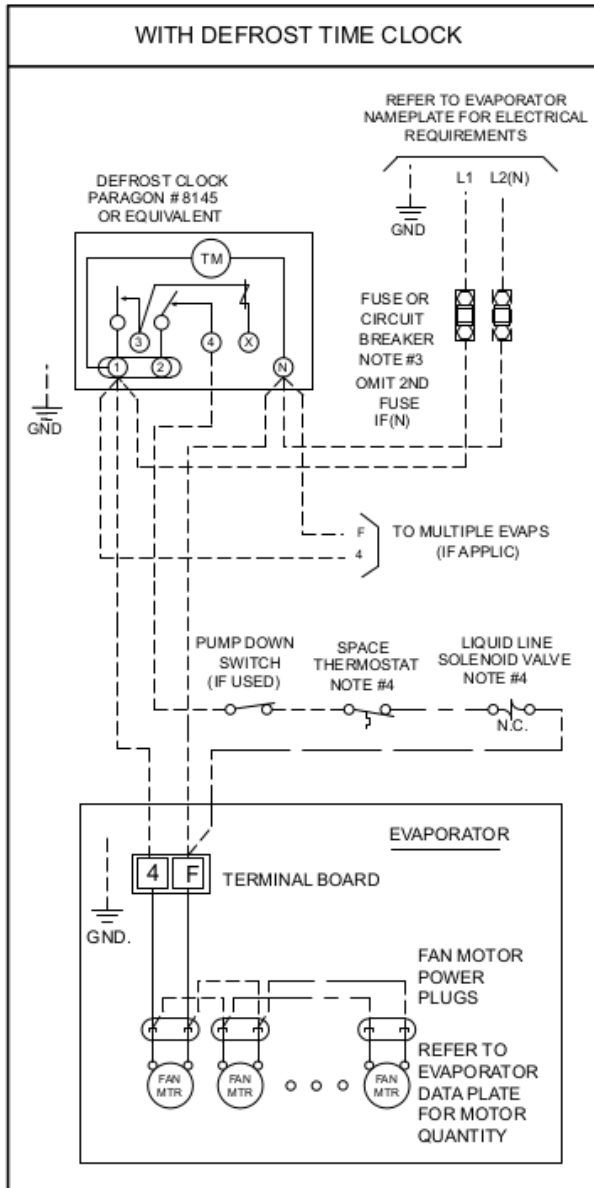
07/30/2018

Medium Temperature Models - Capacity @ 6 F.P.I. *

Medium Temp. Models TPLP		104M	106M	107M	209M	211M	214M	317M	320M	423M	426M	532M	639M	
Number Of Fans		1	1	1	2	2	2	3	3	4	4	5	6	
Capacity BTUH (WATTS)	Evap Temp. 25°F (-4°C)	R407A	4090	5230	6460	8170	10450	13300	16200	19000	21900	24700	30400	37100
		R448A	(1197)	(1530)	(1891)	(2394)	(3059)	(3895)	(4731)	(5567)	(6403)	(7230)	(8902)	(10830)
		R407C	3870	4950	6120	7740	9900	12600	15400	18100	20800	23500	28900	35200
		R404A	(1134)	(1449)	(1791)	(2268)	(2898)	(3690)	(4482)	(5274)	(6066)	(6849)	(8433)	(10260)
		R507	4300	5500	6800	8600	11000	14000	17000	20000	23000	26000	32000	39000
		(1260)	(1610)	(1990)	(2520)	(3220)	(4100)	(4980)	(5860)	(6740)	(7610)	(9370)	(11400)	
		R22	4090	5230	6460	8170	10500	13300	16200	19000	21900	24700	30400	37100
			(1197)	(1530)	(1891)	(2394)	(3059)	(3895)	(4731)	(5567)	(6403)	(7230)	(8902)	(10830)
Air Flow	CFM (L/S)	1010 (477)	950 (458)	900 (425)	2020 (953)	1910 (901)	1800 (850)	2860 (1350)	2700 (1274)	3810 (1798)	3600 (1699)	4500 (2124)	5400 (2549)	
Refrigerant ** Charge R407A	LB. (KG)	0.7 (0.3)	1.1 (0.5)	1.5 (0.7)	1.3 (0.6)	1.4 (0.6)	2.0 (0.9)	3.0 (1.4)	4.0 (1.8)	3.9 (1.8)	3.3 (1.5)	6.5 (2.9)	7.8 (3.5)	



Cooling Unit Wiring Diagram



NOTES

- 1). USE COPPER CONDUCTORS ONLY
- 2). USE 75°C WIRE (OR HIGHER)
- 3). OVERCURRENT PROTECTION FOR EVAPORATOR FAN MOTORS AND DEFROST HEATERS MUST NOT EXCEED MAXIMUM VALUE SHOWN ON EVAPORATOR NAMEPLATE.
- 4). MAY BE FACTORY INSTALLED-MOUNTED AND WIRED ON EVAPORATOR .

TERMINALS

- -COMPONENT TERMINAL
- -TERMINAL BLOCK TERMINAL

CONDUCTORS/WIRING

- FACTORY WIRING
- WIRING BY OTHERS
- ———— OPTIONAL FACTORY OR BY OTHERS

ALL FIELD WIRING MUST BE DONE IN COMPLIANCE WITH ALL APPLICABLE LOCAL AND NATIONAL CODES.



Supplementary Pictures

Reviewed for Code Compliance
Permitting and Inspections Department
Approved with Conditions

07/30/2018



Front of Unit



Cooling Unit Fan



Back of Cooling Unit



Top Mounted Motor