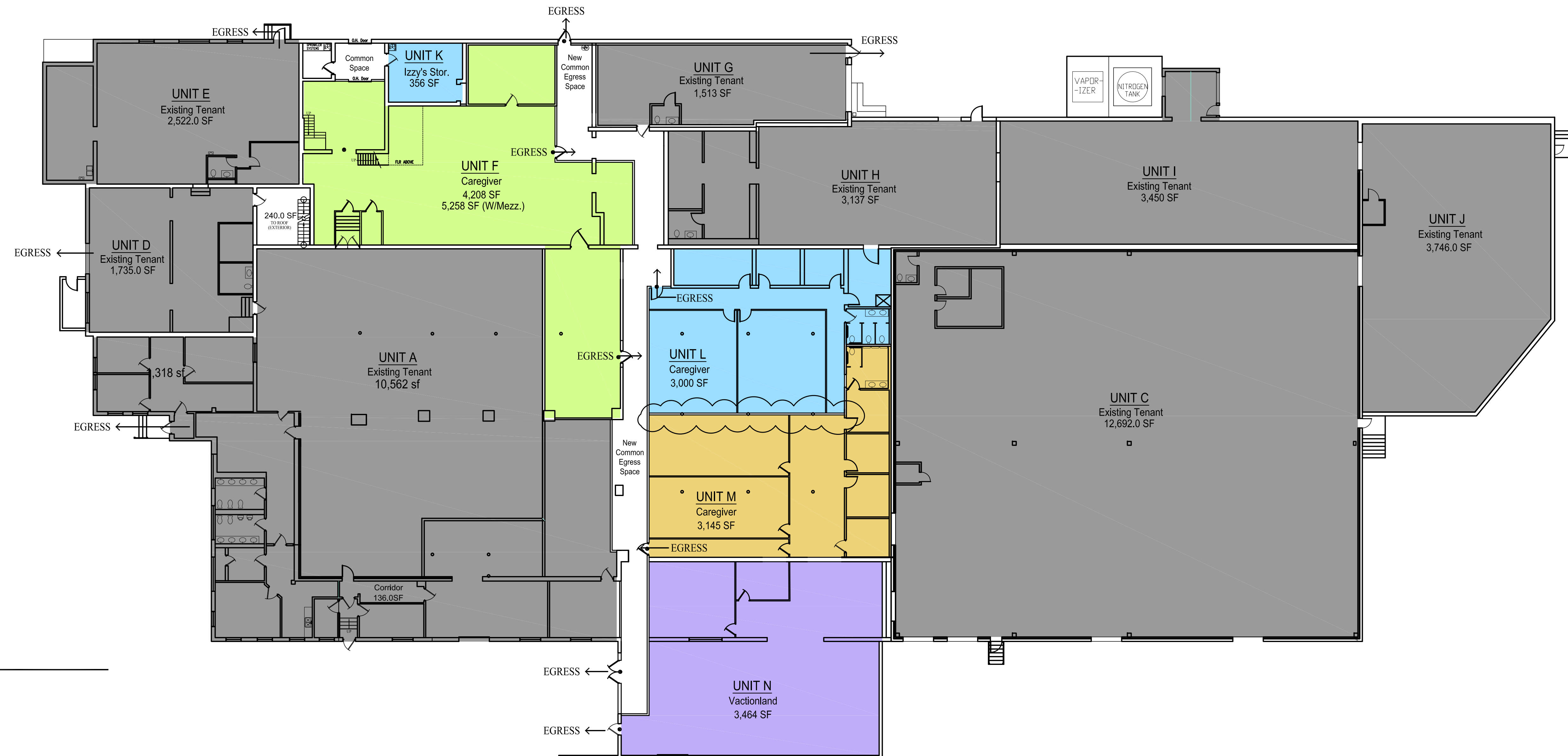


Project Narrative

Change of units F and B

- Unit F to be altered to provide space for common corridor areas and new unit (Unit K)
- Unit B to be divided into three new units (units L, M and N). New space to allow for new egress corridor.
- New interior partition walls in units L, M and N
- All new units to have egress doors, emergency lighting and exit signs

Plumbing and electrical work done by others.



1 | NEW UNIT LAYOUT - 2015
SCALE: 1/16"=1'-0"



Prepared For:

Consulting Engineer:

ARCHETYPE
architects
48 Union Wharf Portland, Maine 04101
(207) 772-6022 Fax (207) 772-4056

Project:
135 WALTON STREET
PORTLAND, MAINE

Revisions:
Revised/updated drawings - 11/03/2105

Date: OCTOBER 2015
Scale: AS NOTED
NEW UNIT LAYOUT
SHOWING
COMPLETED WORK

A2