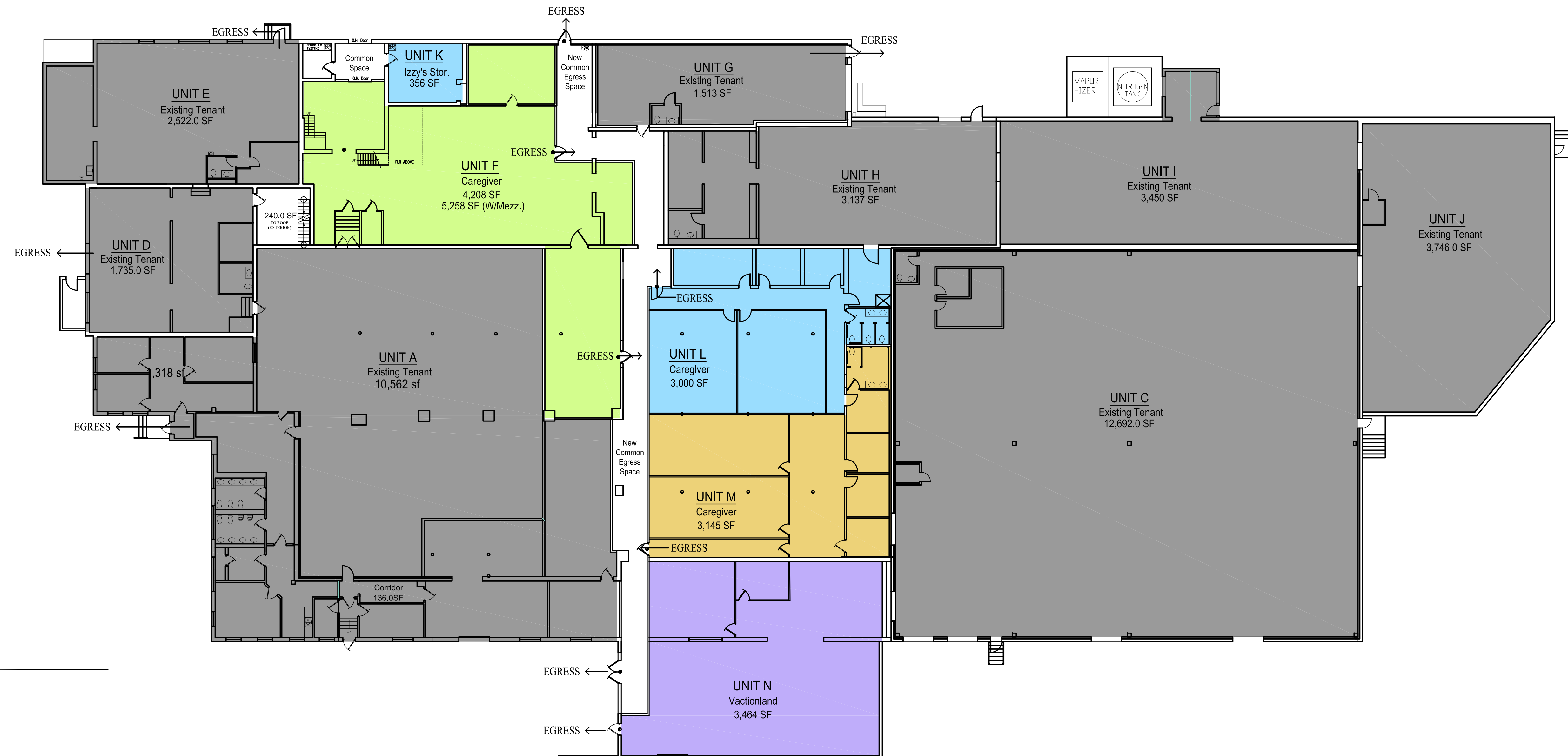


Project Narrative

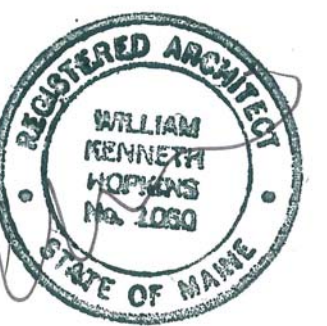
Change of units F and B

- Unit F to be altered to provide space for common corridor areas and new unit (Unit K)
- Unit B to be divided into three new units (units L, M and N). New space to allow for new egress corridor.
- New interior partition walls in units L, M and N
- All new units to have egress doors, emergency lighting and exit signs

Plumbing and electrical work done by others.



1 | NEW UNIT LAYOUT - 2015  
SCALE: 1/16"=1'-0"



Prepared For:

Consulting Engineer:

**ARCHETYPE**  
architects  
48 Union Wharf Portland, Maine 04101  
(207) 772-6022 Fax (207) 772-4056

Project:  
**135 WALTON STREET**  
STREET  
135 WALTON STREET  
PORTLAND, MAINE

Revisions:

Date: OCTOBER 2015  
Scale: AS NOTED  
NEW UNIT LAYOUT  
SHOWING  
COMPLETED WORK