

# **Dakota Bear Properties LLC**

**45 Some View Drive  
Sweden, Maine 04040  
207-890-9199**

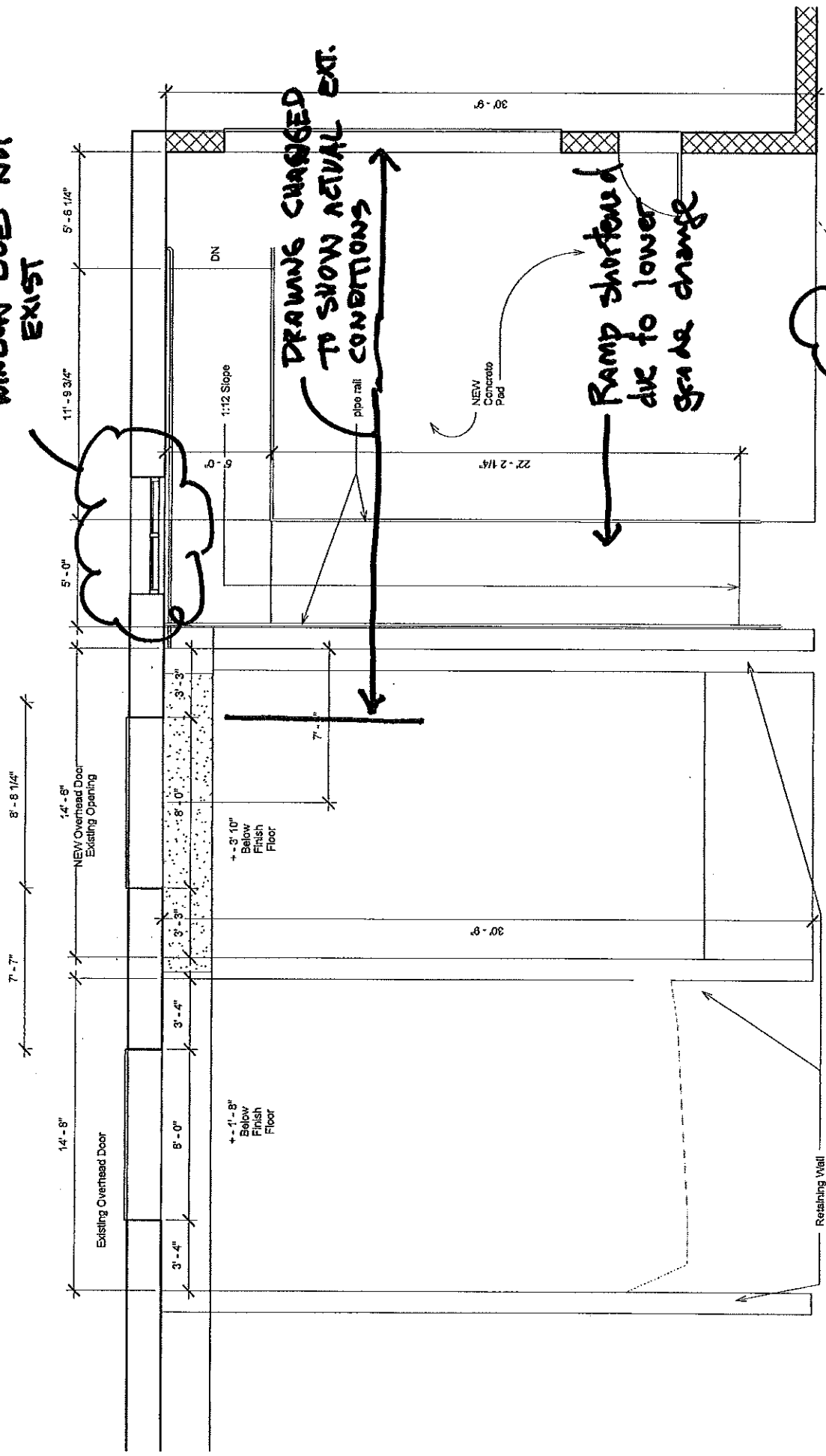
**To: Ann Machado and George Froehlich  
Building Inspections  
Room 315  
Portland, Maine**

**From: Rickie Hall  
Walton Street Business Park  
135 Walton Street  
Portland, ME 04103**

**I am requesting to extend, permit #2012-04-3870 for an additional six months to alter the loading area for 135 Walton Street. Since we are making a few minor changes to the originally submitted plan, I have submitted an attachment to this e-mail showing the few dimensional changes. The changes are written out on the plan.**

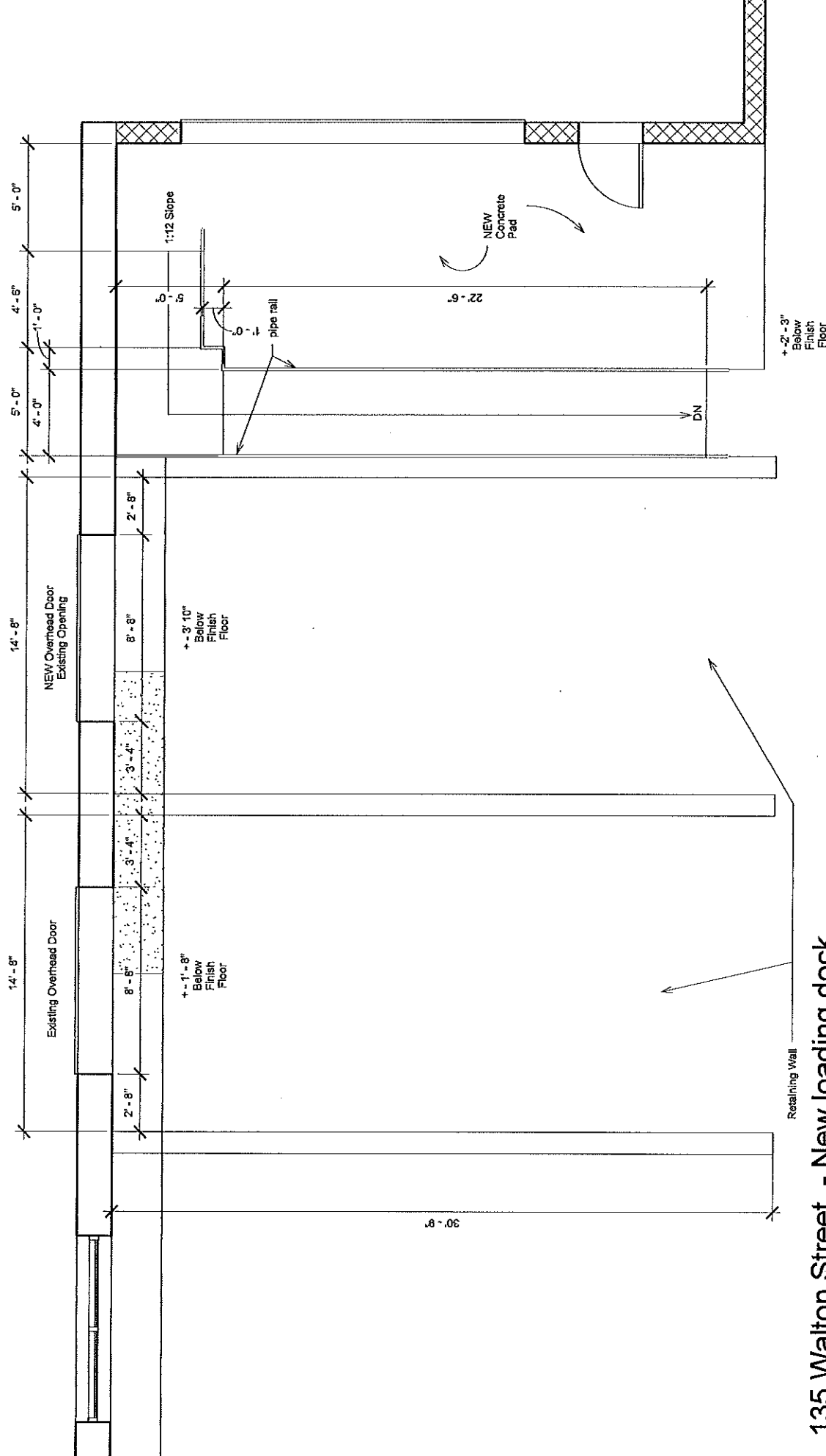
**Best Regards,  
Rickie Hall 207-890-9199**

WINDOWS DOES NOT EXIST

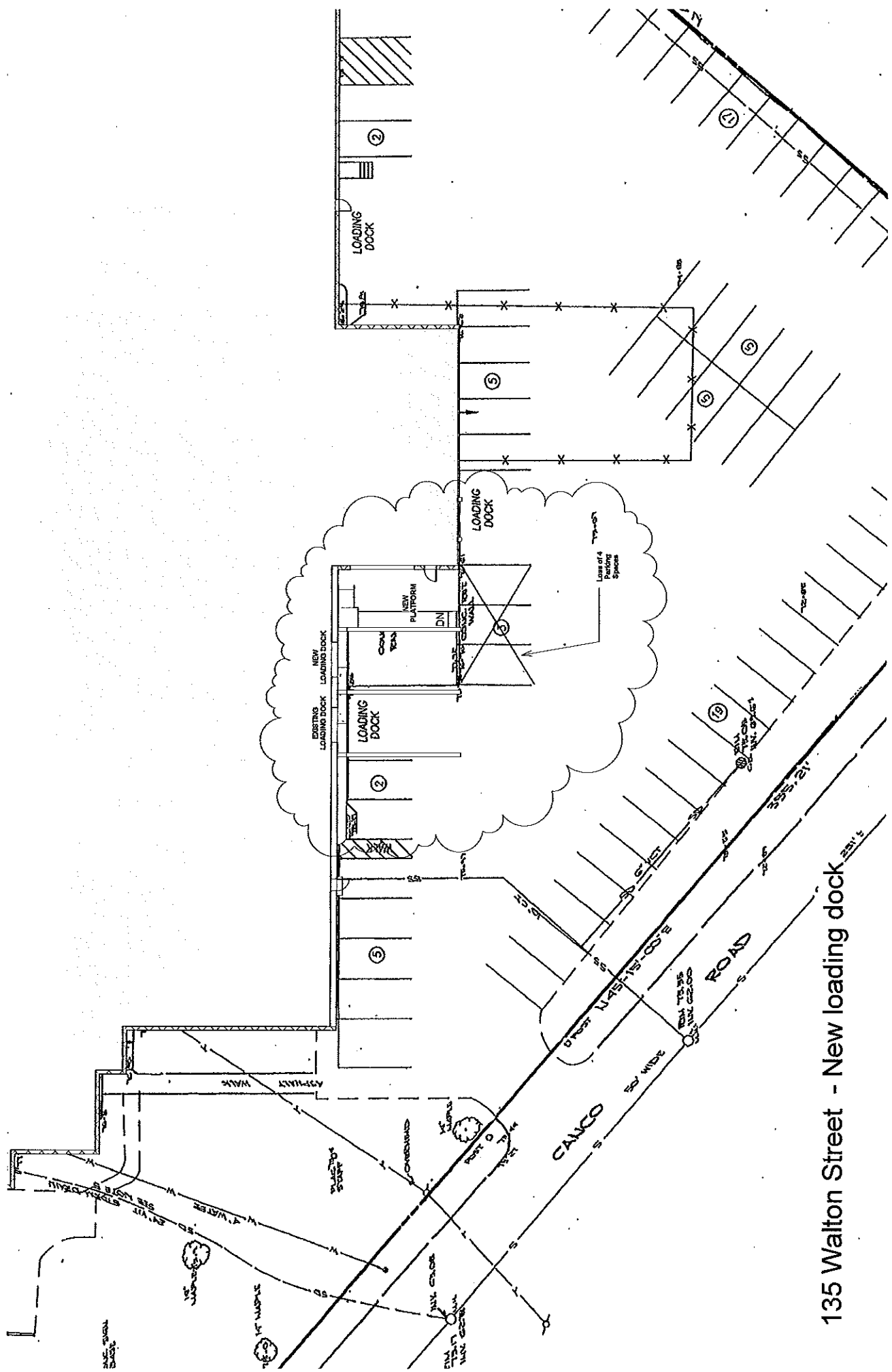


135 Walton Street - New loading dock

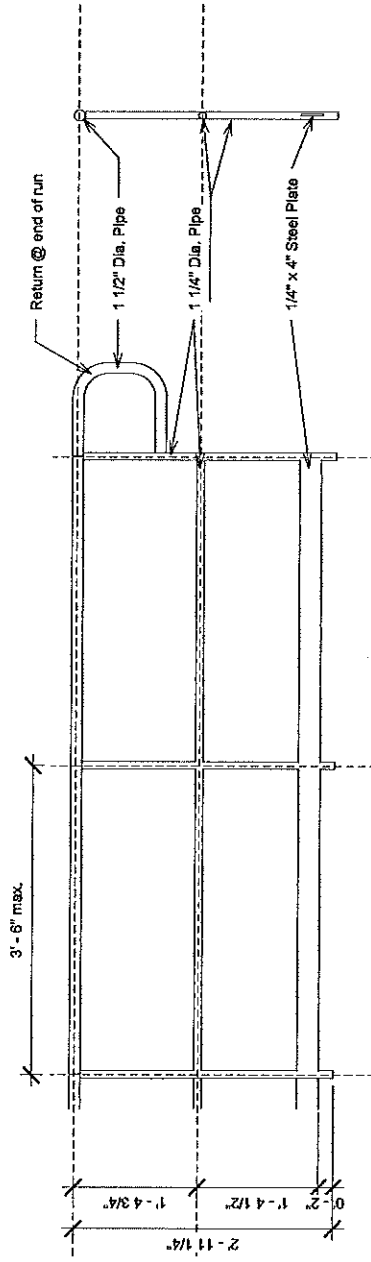
7.9.12



135 Walton Street - New loading dock



135 Walton Street - New loading dock



Guardrail - Typical Details