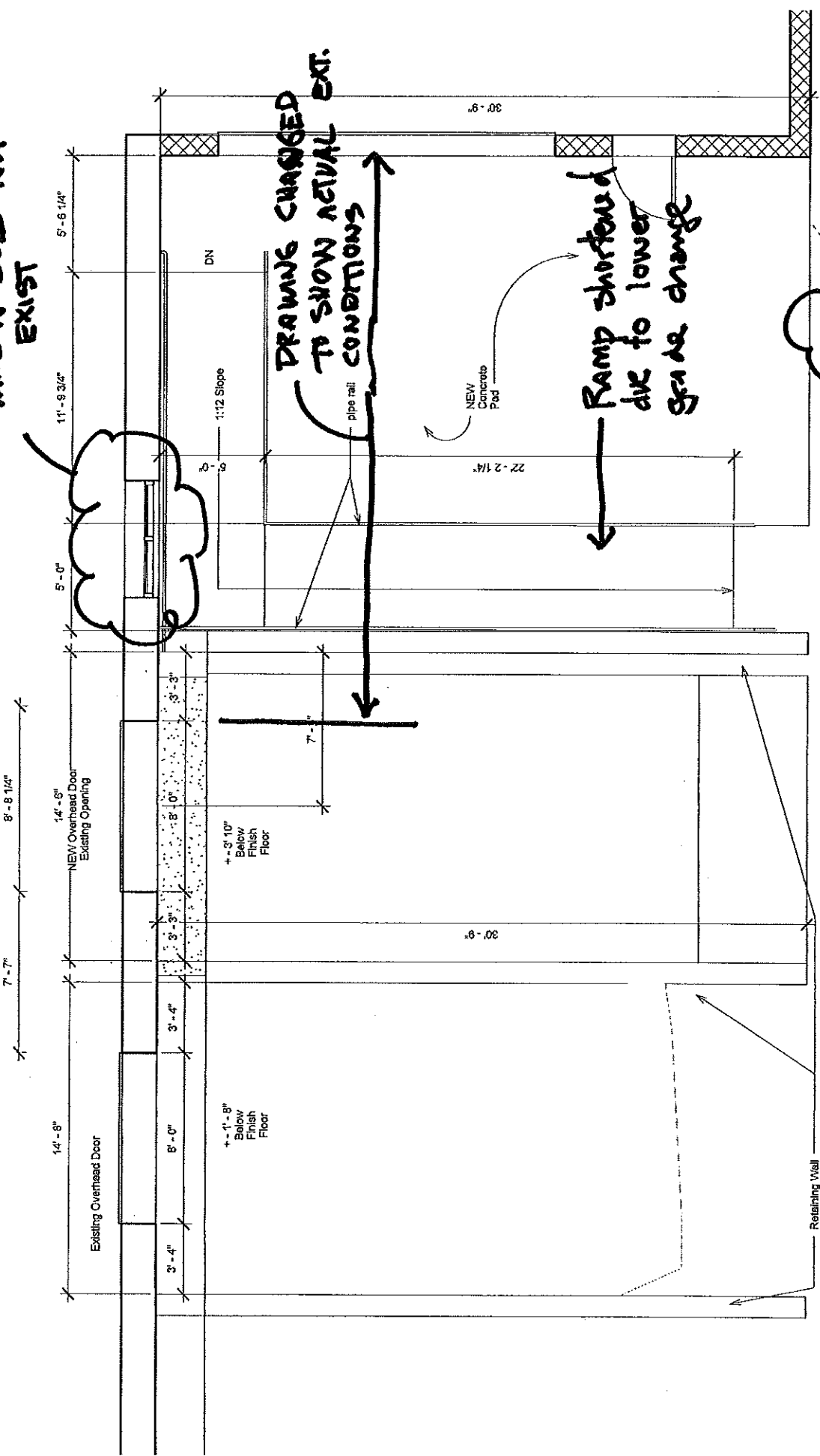


WINDOWS DOES NOT EXIST



DRAWING CHANGED TO SHOW ACTUAL EXT. CONDITIONS

Ramp shortened due to lower grade change

GRADE CHANGE REVEALED TO 2'-3" ACTUAL

+2'-10" Below Finish Floor

135 Walton Street - New loading dock

7.9.12