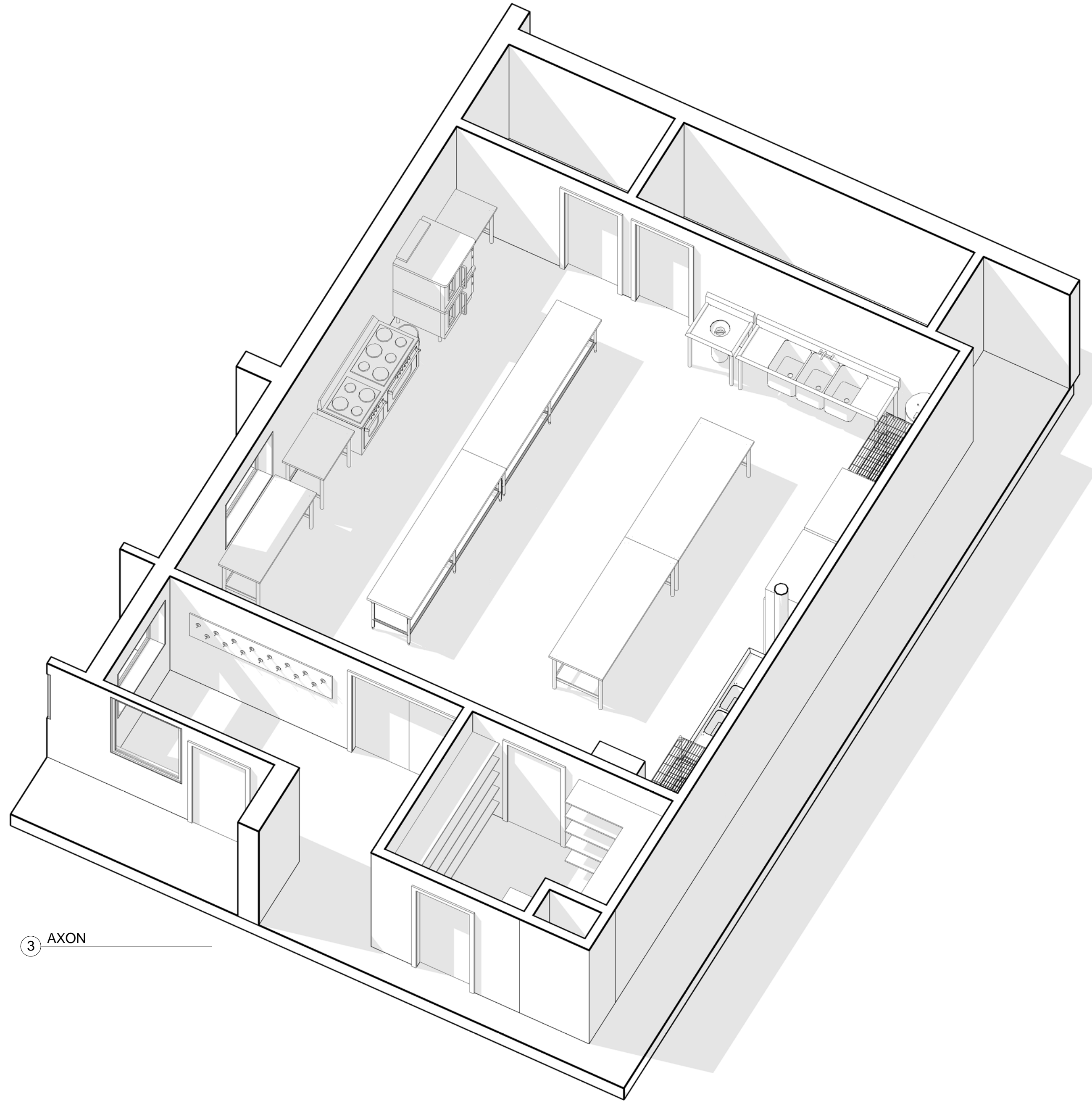


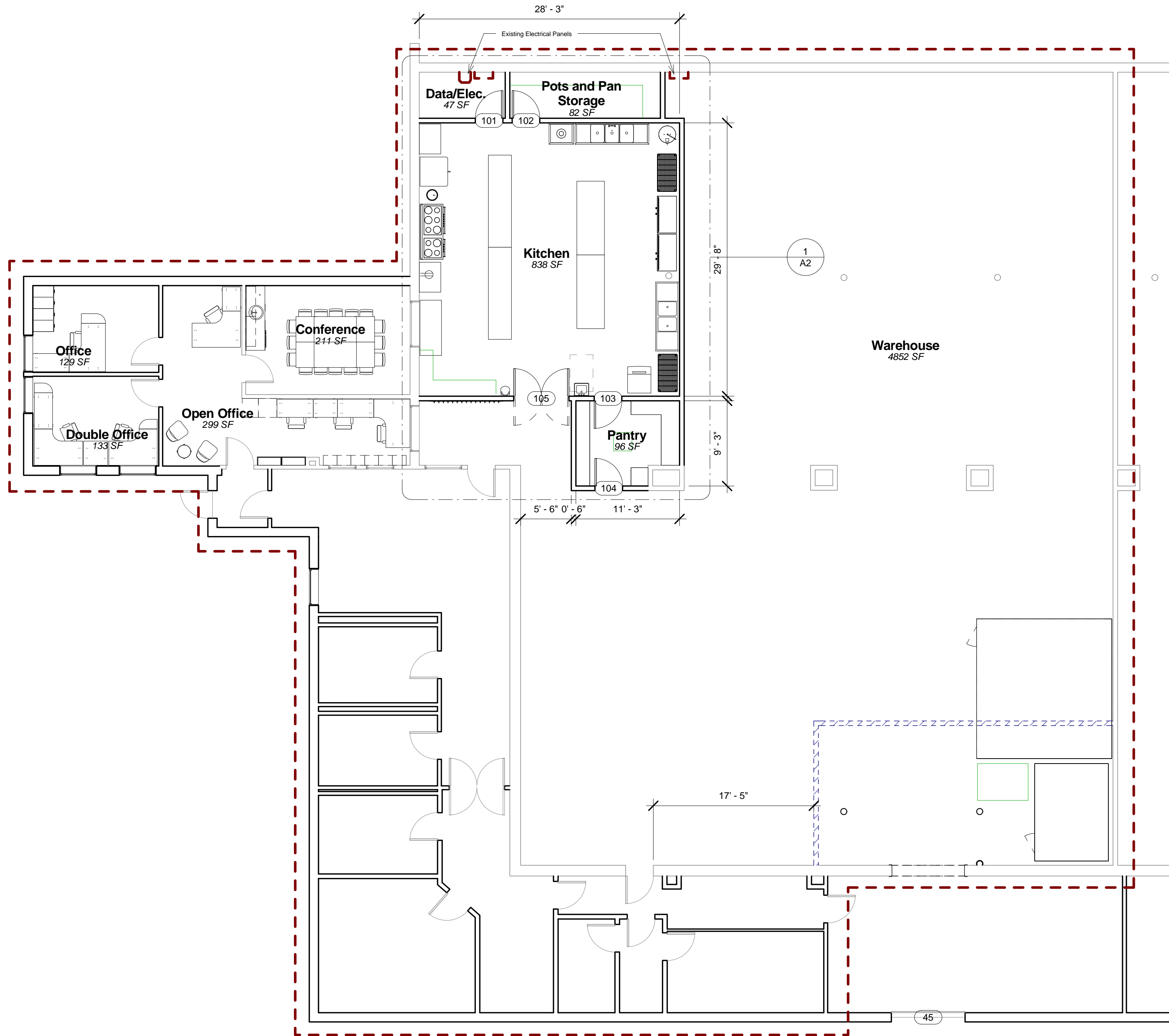
① Kitchen View



② Kitchen View 2



③ AXON



1 Level 1
1/8" = 1'-0"

4/2/2012 9:12:11 PM © 2012 plewadowski

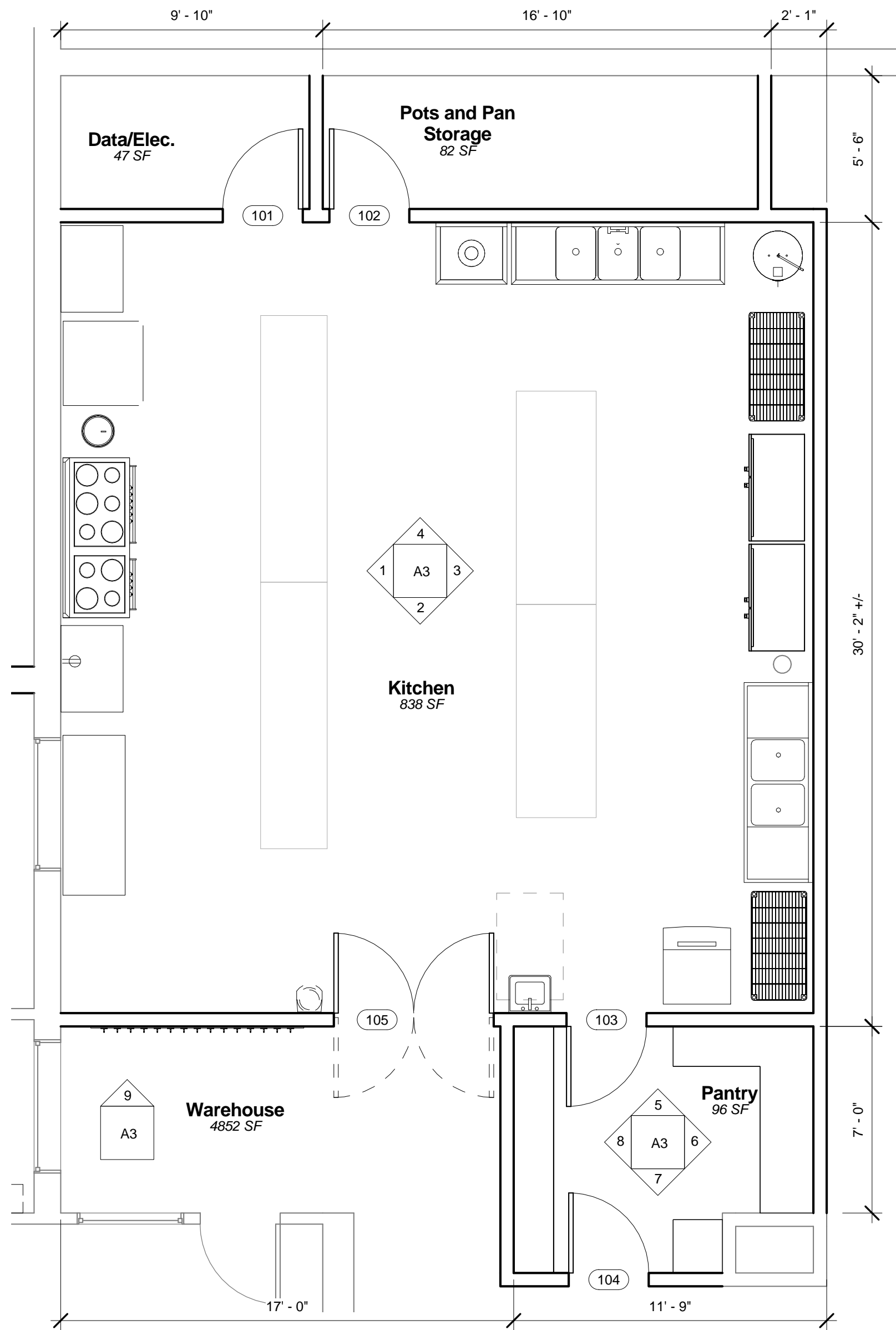
-paul lewadowski AIA
116 Clark Street, Portland, ME 04102
207.899.4317
plewadowski@maine.rr.com

Wayside Food Programs
135 Walton Avenue

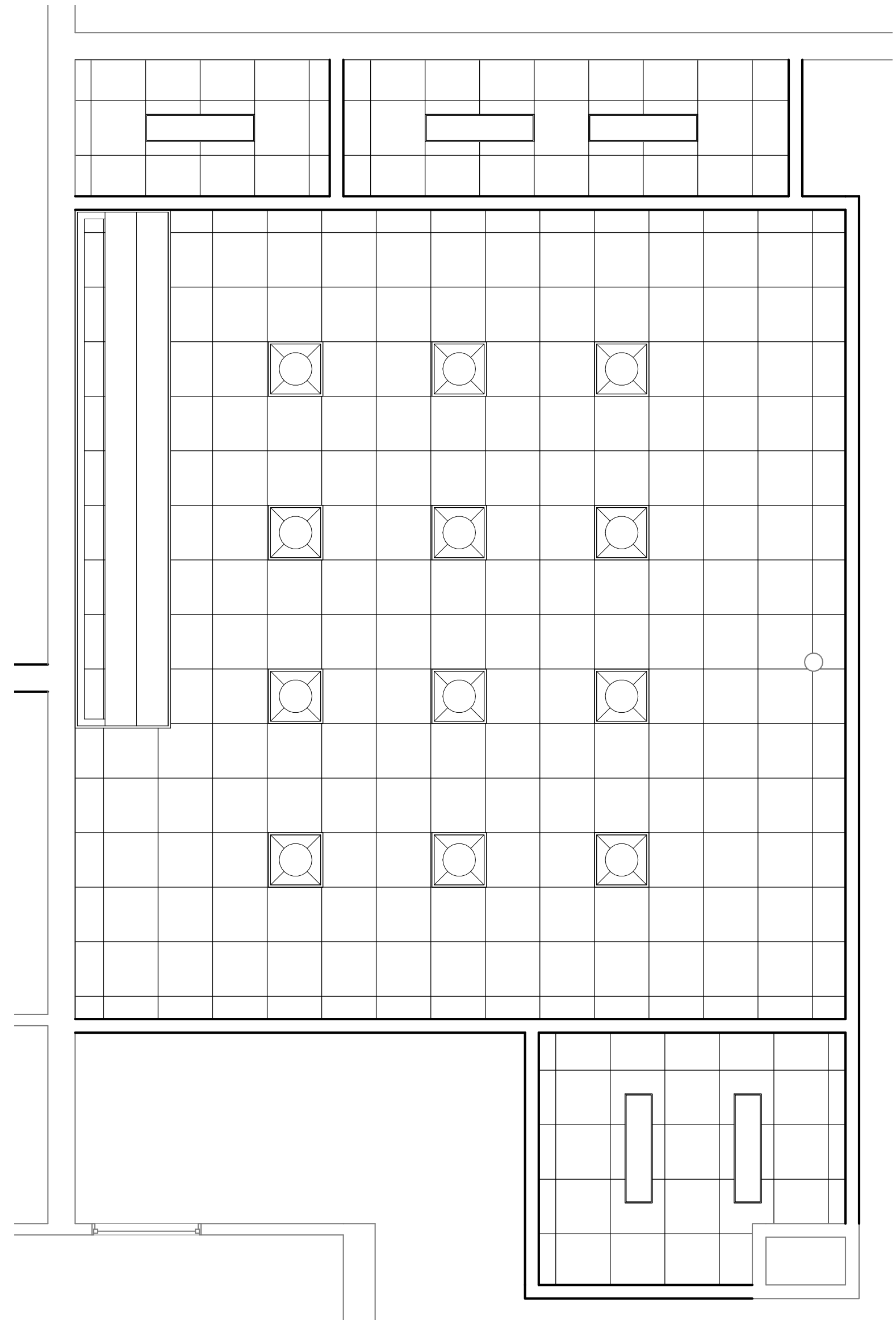
Overall Floor Plan
Project number 2012.1
Date 4.3.12

A1

Scale 1/8" = 1'-0"

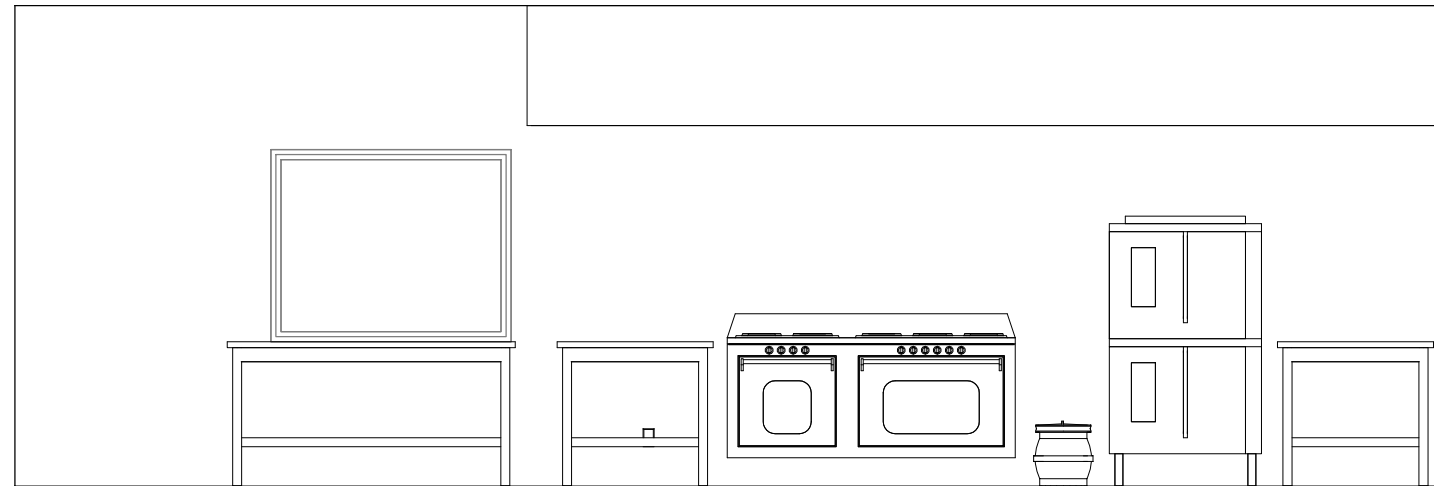


① Kitchen
1/4" = 1'-0"

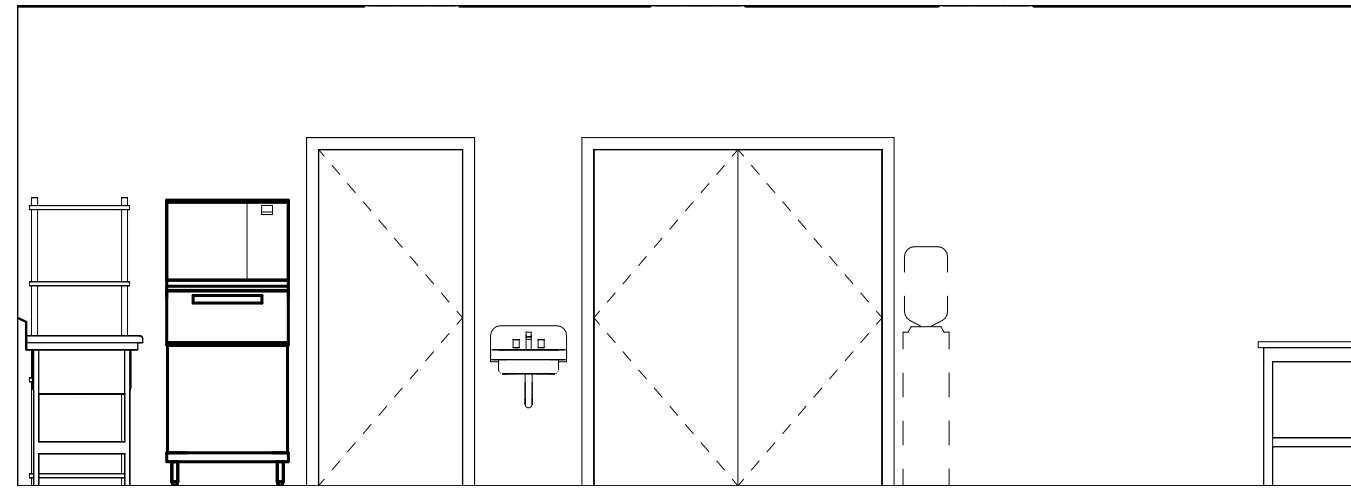


② Kitchen Ceiling Plan
1/4" = 1'-0"

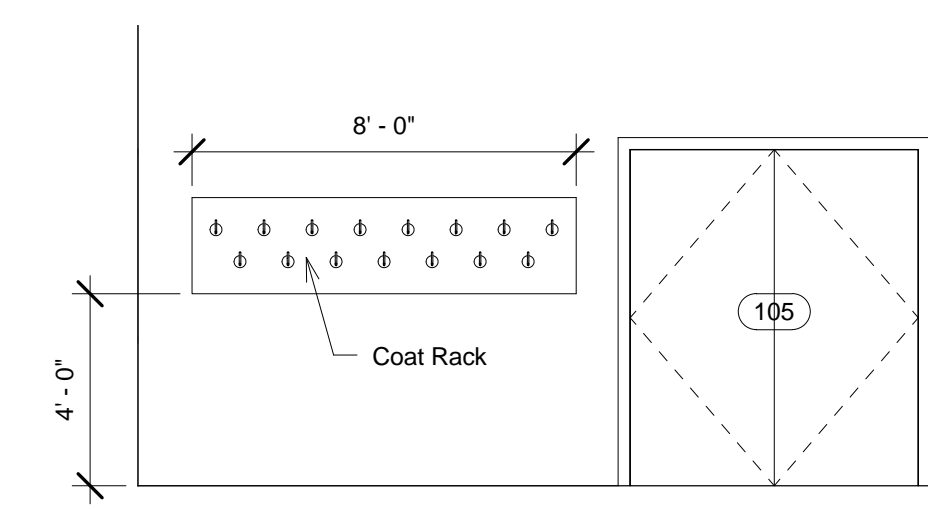
4/2/2012 9:12:12 PM © 2012 plewandowski



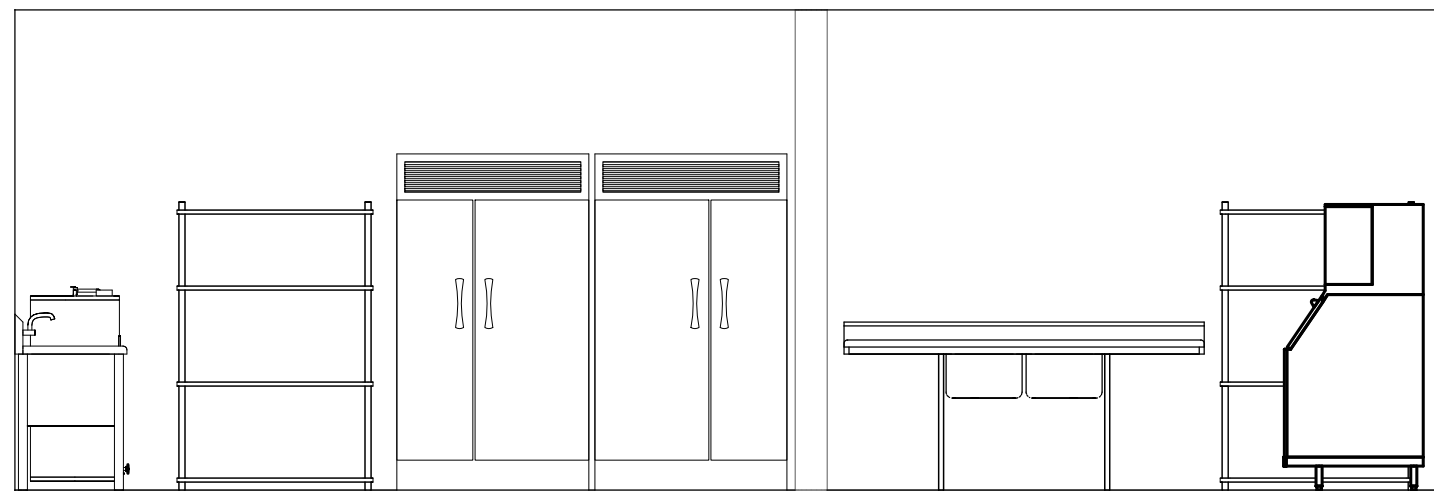
1 Kitchen - Hood
1/4" = 1'-0"



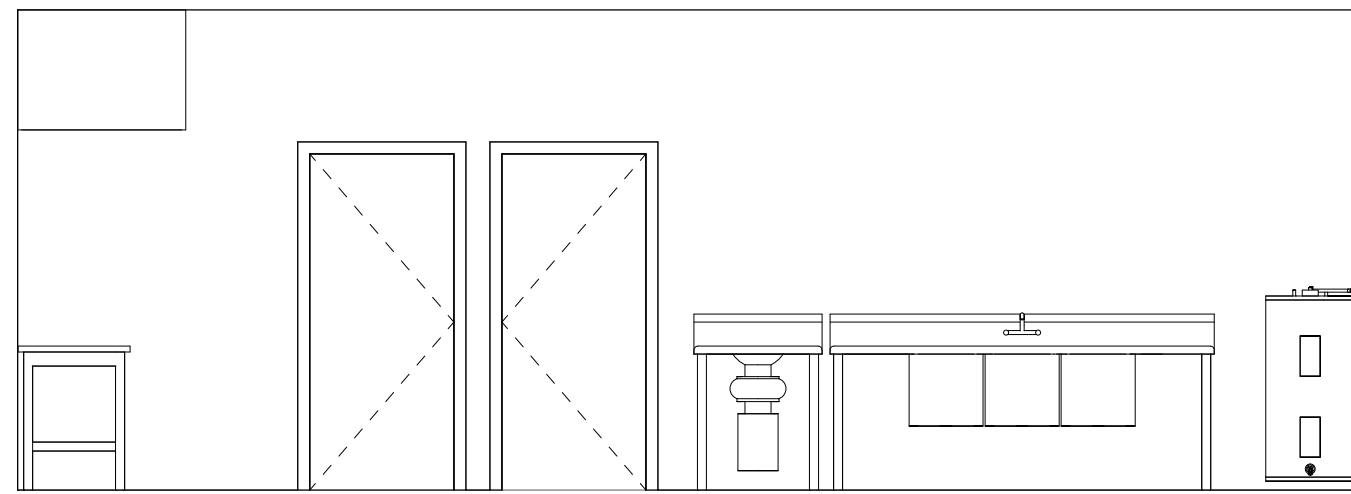
2 Kitchen - Entry Door
1/4" = 1'-0"



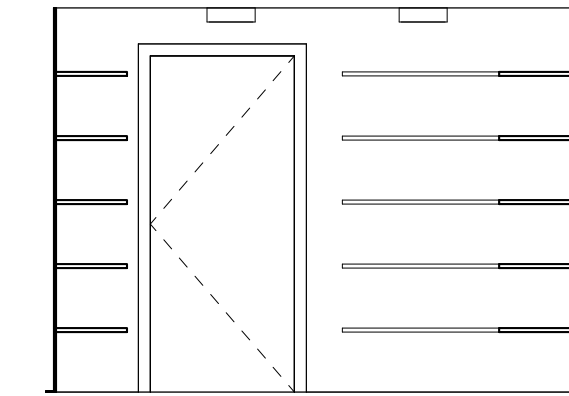
9 Coat Rack Elevation
1/4" = 1'-0"



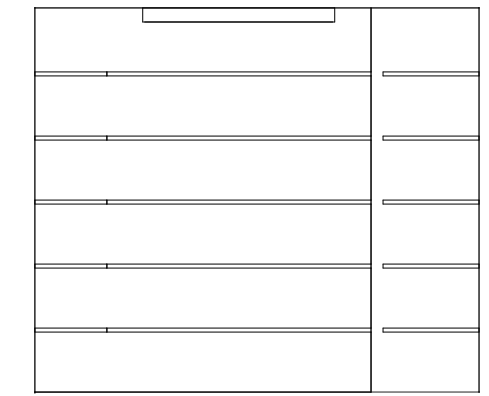
3 Kitchen - ref/frz
1/4" = 1'-0"



4 Kitchen - Sink
1/4" = 1'-0"



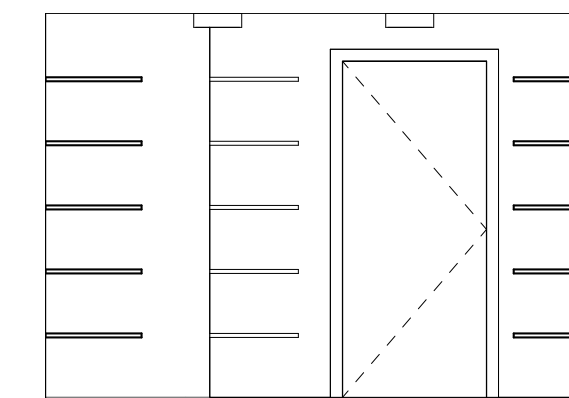
5 Pantry Elevation 1
1/4" = 1'-0"



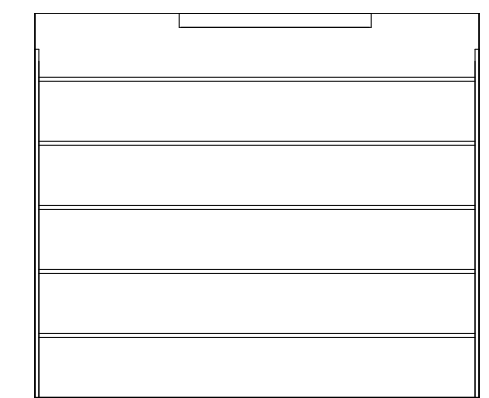
6 Pantry Elevation 2
1/4" = 1'-0"

DOOR AND FRAME SCHEDULE										
DOOR #	Family and Type	DOOR					GLAZ	HARDWARE SET	FIRE RATING	REMARKS
		WIDTH	HEIGHT	THICK	MAT'L	ELEV				
100	Single-Flush: 36" x 84"	3' - 0"	7' - 0"	0' - 2"						
101	Single-Flush: 36" x 84"	3' - 0"	7' - 0"	0' - 2"						
102	Single-Flush: 36" x 84"	3' - 0"	7' - 0"	0' - 2"						
103	Single-Flush: 36" x 84"	3' - 0"	7' - 0"	0' - 2"						
104	Single-Flush: 36" x 84"	3' - 0"	7' - 0"	0' - 2"						
105	Double-Flush-Dbf Acting: 72" x 84"	6' - 0"	7' - 0"	0' - 2"						

Room Schedule									
Number	Name	Area	Floor Finish	Wall Finish	Base Finish	Ceiling Finish	Perimeter	Ceiling Height	Comments
102	Data/Elec.	47 SF	exsiting				28' - 8"	8' - 0"	
exsiting: 1		47 SF							
100	Warehouse	4852 SF	n/a			n/a	347' - 2 13/16"	10' - 0"	
n/a: 1		4852 SF							
101	Pots and Pan Storage	82 SF	QT	GWB		Armstrong Fine Fissured Ceramaguard 2x2 - 15/16" grid	42' - 8"	8' - 0"	
103	Kitchen	838 SF	QT	FRP		Armstrong Fine Fissured Ceramaguard 2x2 - 15/16" grid	115' - 10"	10' - 0"	
104	Pantry	96 SF	QT	GWB		Armstrong Fine Fissured Ceramaguard 2x2 - 15/16" grid	41' - 0"	8' - 0"	
QT: 3		1016 SF							



7 Pantry Elevation 3
1/4" = 1'-0"



8 Pantry Elevation 4
1/4" = 1'-0"