

FLOOR PLAN NOTES:

- DIMENSIONS ARE GIVEN FROM CENTER OF NEW WALLS, CENTER OF WALL OPENINGS, FACE OF MASONRY AND FACE OF EXISTING WALLS UNLESS NOTED OTHERWISE.
- NEW WALLS ARE TO BE LOCATED ON COLUMN CENTERLINES UNLESS DIMENSIONS OR NOTED OTHERWISE.
- PATCH AND REPAIR ALL AREAS OF DEMOLITION AS REQ.
- CONFIRM PAINTING AND COLOR SELECTION WITH OWNER.
- EQUIPMENT PLACEMENT AND INSTALLATION MUST BE VERIFIED BY THE OWNER. THE LOAD CREATED BY THE EQUIPMENT TO CARRY THE LOAD CREATED BY THE LAUNDRY CONVERTOR TRACK SYSTEM PRIOR TO ITS INSTALLATION.
- COORDINATE MECHANICAL VENTING REQUIREMENTS AND LOCATIONS WITH OWNER.

EQUIPMENT SCHEDULE

NO.	QTY.	DESCRIPTION	MODEL NUMBER / REMARKS
1	2	WASHER	WASCOMAT FL184 - 986220043
2	2	WASHER	WASCOMAT EXSM 230 - FL 9863390101
3	1	WASHER	WASCOMAT EX 100 - 9862980037
4	1	WASHER	WASCOMAT EX3DFC - FLE40DFC - 986480015
5	2	WASHER	WASCOMAT EXSM - 613533
6	3	WASHER	(BRAUN OPEN POCKETS - 3 PHASE - 240V - 40 AMP)
7	3	DRYER	JT7500G
8	1	DRYER	JT7500G
9	1	DRYER	HT120NRMFG1W01
10	3	DRYER	CFSS
11	2	DRYER	CPG - 400 I
12	1	DRYER	MODEL CLASSIC
13	1	LINT CAPTURE UNIT	AIR CHICAGO SLIM
14	2	IRONER	SPPFRMW
15	1	FOLDER	60KWAF
16	2	FOLDER	FULTON THERMO PACK
17	1	BOILER	WL100-SL
18	1	STEAM TUNNEL	QUINCY FE350
19	1	AIR COMPRESSOR	SRHT 35-02250143-292
20	1	MOTOR	12B550L AC
21	1	STEAMER	ARM
22	2	IRONER	M DELTA
23	1	FOLDER / FEEDER	MP4FSS

DOOR HARDWARE SETS:

- HMS1: EACH LEAF TO RECEIVE HINGES (3 PER LEAF), PASSAGE LOCKSET (LEVER TYPE), WALL MOUNT DOOR STOP, SILENCERS
- HMS2: EACH LEAF TO RECEIVE HINGES (3 PER LEAF), CLOSER CLASSROOM LOCKSET (LEVER TYPE), FLUSH BOLTS IN INACTIVE LEAF, WALL MOUNT DOOR STOP, SILENCERS
- HMS3: EACH LEAF TO RECEIVE HINGES (3 PER LEAF), CLASSROOM LOCKSET (LEVER TYPE), FLUSH BOLTS IN INACTIVE LEAF, WALL MOUNT DOOR STOP, SILENCERS
- HMS4: OVERHEAD DOOR / ROLL-UP DOOR HARDWARE PROVIDED BY MANUFACTURER TO INCLUDE LIFT MOTOR AND ASSOCIATED EQUIPMENT, TRACK, DOOR, DOOR BOTTOM, WEATHERSTRIPPING, LOCK, WEATHER SHIELD (EXTERIOR ONLY)
- HMS5: EACH LEAF TO RECEIVE HINGES (3 PER LEAF), CLOSER, EXTRA LOCKSET (LEVER TYPE), EXIT DEVICE, WALL MOUNT DOOR STOP, SILENCERS

REV.	ISSUED FOR CONSTRUCTION	DESCRIPTION	DATE
0	ISSUED FOR CONSTRUCTION		8-17-04

ISSUED FOR CONSTRUCTION
8-17-04

CURRENT ISSUE STATUS:

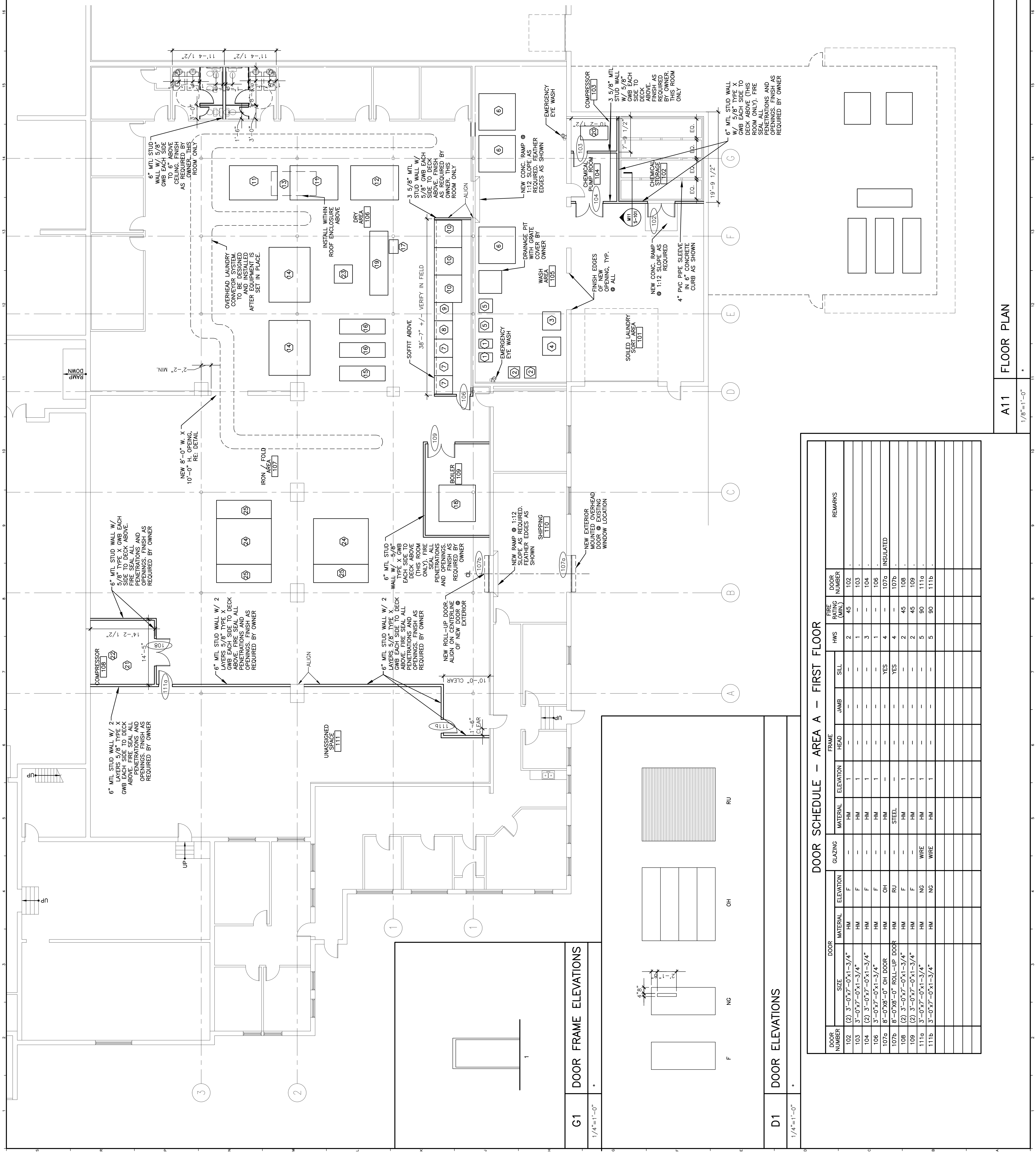


ARCHITECTURE ENGINEERING PLANNING
144 Fore Street P.O. Box 618
Portland, Maine 04104
tel. (207) 772-3846
fax. (207) 772-1070

ADVANTAGE LINEN SERVICE
PORTLAND, MAINE

FLOOR PLAN & SCHEDULES

SHEET TITLE:	AS NOTED	DATE:	8-17-04
SCALE:	PROJECT MANAGER:	JLH	GRAPHIC SCALE: 0"
JOB CAP/DRAWN:	CTB	A/E OF RECORD:	JLH
SHORT CAD FILE:	AE101-04127	SHEET NO.:	AE101
PROJECT NO.:	04127		



DOOR SCHEDULE - AREA A - FIRST FLOOR

DOOR NUMBER	SIZE	DOOR MATERIAL	ELEVATION	GLAZING	MATERIAL	ELEVATION	FRAME	JAMB	SILL	HWS	FIRE RATING (MIN.)	DOOR NUMBER	REMARKS
102	(2) 3'-0"x7'-0"x1'-3/4"	HM	F	-	HM	1	-	-	-	2	45	102	
103	3'-0"x7'-0"x1'-3/4"	HM	F	-	HM	1	-	-	-	1	103		
104	(2) 3'-0"x7'-0"x1'-3/4"	HM	F	-	HM	1	-	-	-	3	104		
106	3'-0"x7'-0"x1'-3/4"	HM	F	-	HM	1	-	-	-	1	106		INSULATED
107a	8'-0"x8'-0" OH DOOR	HM	OH	-	HM	-	-	-	-	YES	4	107a	
107b	8'-0"x8'-0" ROLL-UP DOOR	HM	RU	-	STEEL	-	-	-	-	YES	4	107b	
108	(2) 3'-0"x7'-0"x1'-3/4"	HM	F	-	HM	1	-	-	-	2	45	108	
109	(2) 3'-0"x7'-0"x1'-3/4"	HM	F	-	HM	1	-	-	-	2	45	109	
111a	3'-0"x7'-0"x1'-3/4"	HM	NG	-	HM	1	-	-	-	5	90	111a	
111b	3'-0"x7'-0"x1'-3/4"	HM	NG	-	HM	1	-	-	-	5	90	111b	

G1 DOOR FRAME ELEVATIONS

1/4"=1'-0"

D1 DOOR ELEVATIONS

1/4"=1'-0"

A11 FLOOR PLAN

1/8"=1'-0"