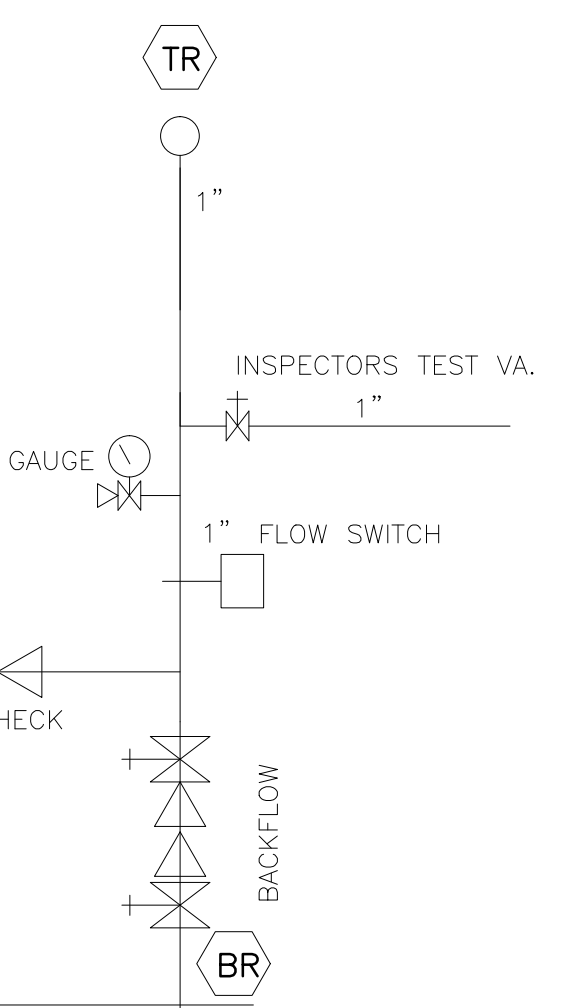


BASEMENT PLAN
SCALE 1/4"=1'-0"

APPROXIMATE SPRINKLER EQUIPMENT AREA— MONITORED SYSTEM WITH FLOW/ TAMPER SWITCH—SYSTEM 13 D EXISTING WATER SERVICE TO REMAIN



RISER SECTION
NO SCALE

- 18 RELIABLE F1FR-56 O.R. UPRIGHTS 1/2"x1/2" K=5.6
- 16 RELIABLE RESIDENTIAL CONCEALED PENDENT 7/16"x1/2" K=4.9
- 54 RELIABLE RESIDENTIAL HORIZONTAL SIDEWALL 7/16"x1/2" K=4.9

SYSTEM CLASSIFICATION

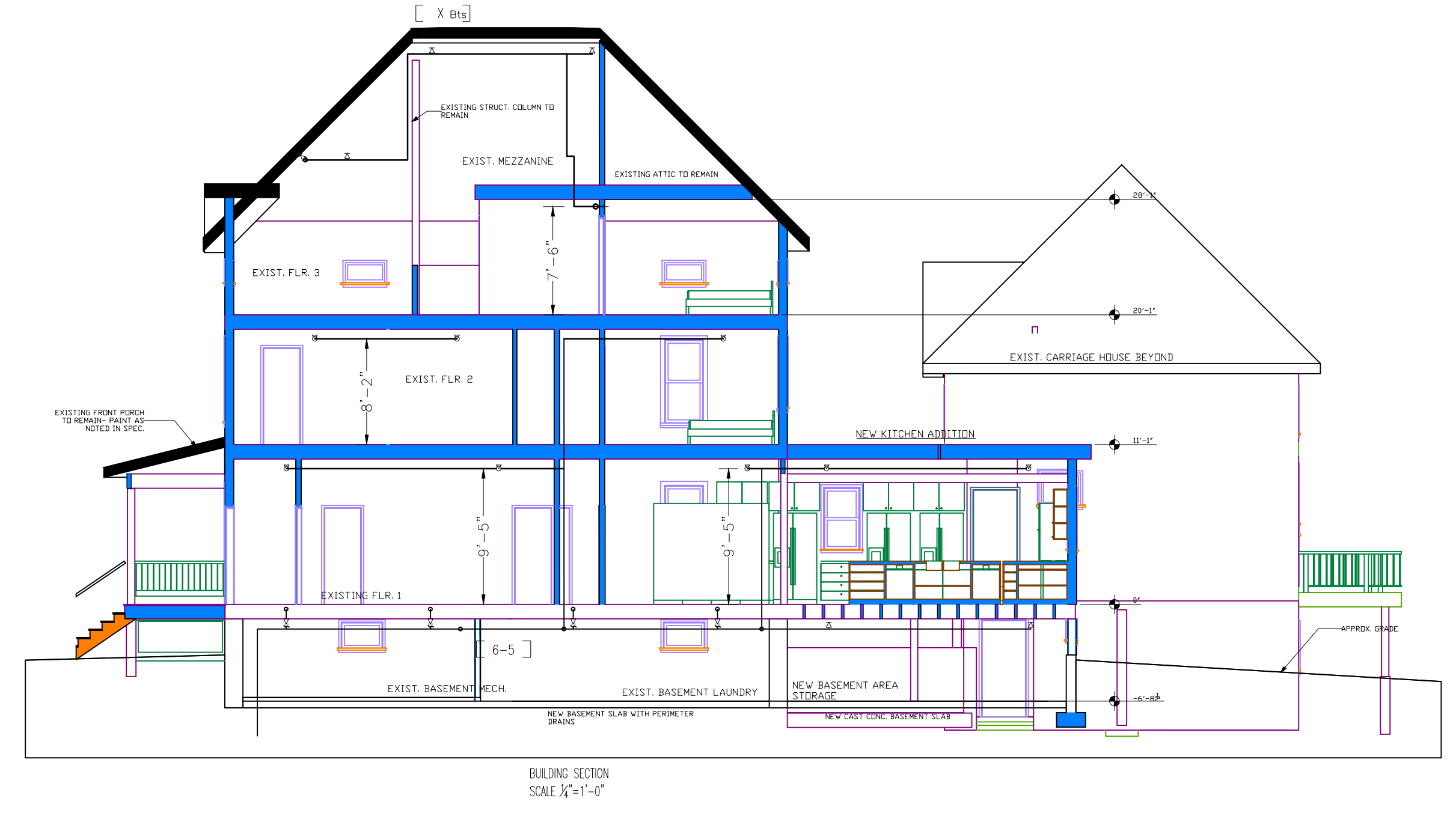
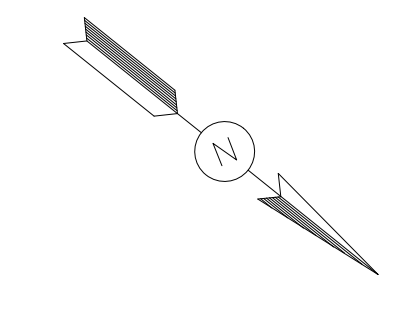
NFPA 13D SPRINKLER SYSTEM ON THE SECOND FLOOR AND FIRST FLOOR EXIT.
FEED FROM THE EXISTING SYSTEM IN THE WINN HOUSE

GENERAL NOTES

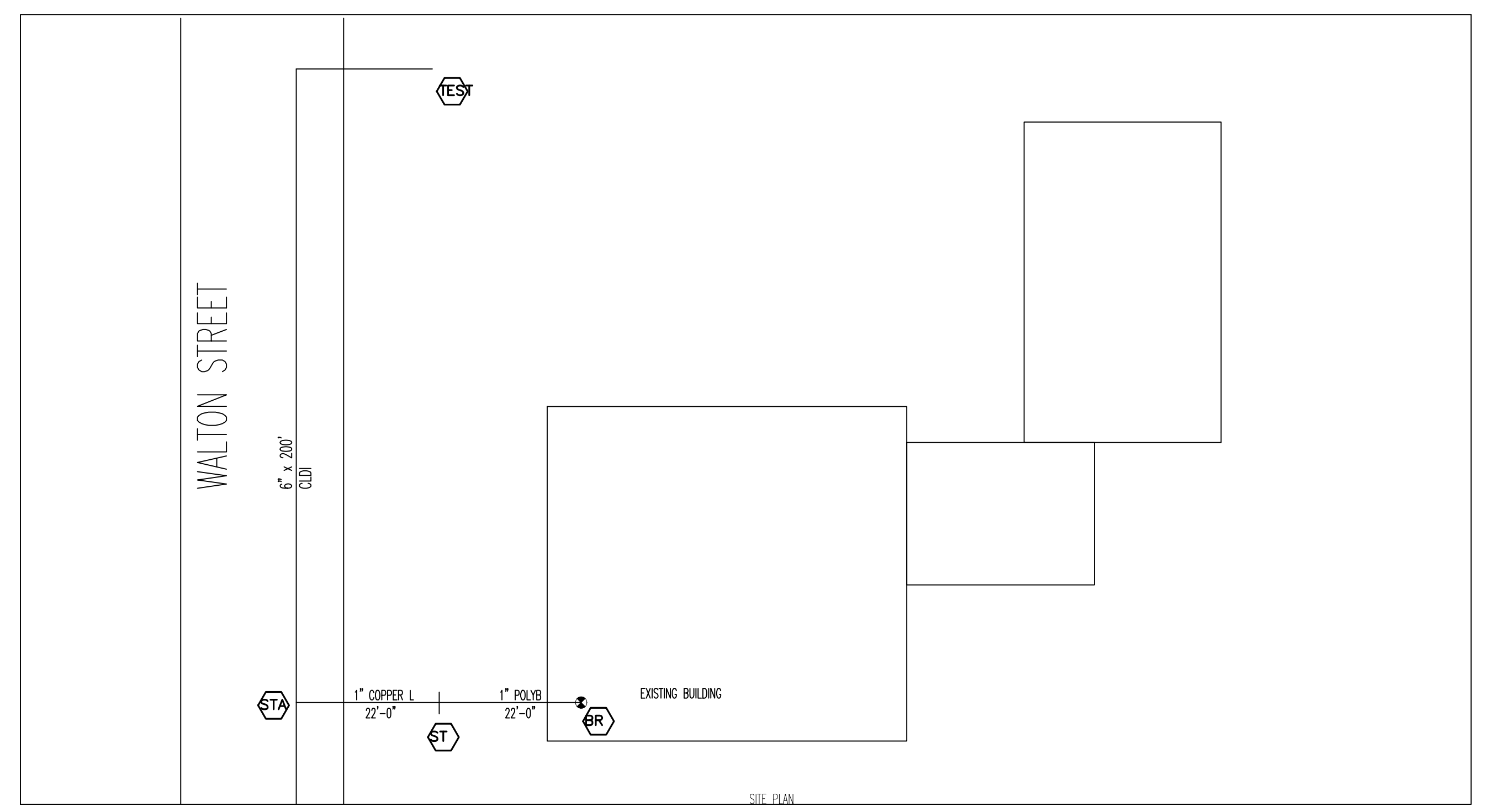
ALL DIMENSIONS ARE CENTER TO CENTER U/N.
ALL SCREWED PIPE TO BE SCH 40 BLACK STEEL .
ALL SCREWED FITTINGS TO BE STD. WT. C.I. BLACK U/N
SPRINKLERS NOTE REQUIRED IN BATHROOMS OF 55 S/F AND LESS
SPRINKLERS NOT REQUIRED IN CLOSETS, LINEN CLOSETS AND PANTRIES THAT MEET ALL OF THE CONDITIONS BELOW:
-THE AREA DOES NOT EXCEED 24sq/F
-THE LEAST DIMENSION DOES NOT EXCEED 3FT.
SPRINKLERS NOT REQUIRED IN GARAGES, OR OPEN ATTACHED PORCHES, CARPORTS
SPRINKLERS NOT REQUIRED IN ATTICS, PENTHOUSE EQUIP ROOMS, FLOOR AND CEILING SPACES
SPRINKLERS ARE TO BE LOCATED 6" MIN/12" MAX FROM FINISHED CEILINGS
CENTERLINE OF PIPE IN EXPOSED AREAS IS -3" OFF FINISHED WALLS U.O.N.

LEGEND

- CONCEALED WHITE RES. PENDENT
- WHITE RES. HOR. SIDEWALL
- RISE OR DROP
- RISER BETWEEN FLOOR
- SCREWED COUPLING
- HYDRAULIC REFERENCE POINT
- FF k=XX FINISH FLOOR TO CENTERLINE OF PIPE
- C k=XX CEILING TO CENTERLINE OF PIPE
- BJ k=XX BOTTOM OF JOIST TO CENTERLINE OF PIPE
- TJ k=XX TOP OF JOIST TO CENTERLINE OF PIPE



BUILDING SECTION
SCALE 1/4"=1'-0"



SITE PLAN

DEAN & ALLYN, INC.
FIRE PROTECTION • SPECIAL HAZARD
116 LEWISTON ROAD, GRAY, MAINE 04039
(207)657-5646 FAX:(207)657-5647

		DANA A. STEWART NICET IV - #064544		DRAWING TITLE: BASEMENT LEVEL		Submittal	
APPROVED BY	DATE	SURVEYED BY	SEC	JOB:		NO. OF SPRINKLERS SHOWN ON THIS SHEET	
		//	4/01/14	Plymouth House		88	
		//		116 Walton Street		NO. OF SPRINKLERS ON JOB	
		//		Portland Maine, 04103		88	
		//		CONTRACT WITH: Papi and Romano Builders		CONTRACT NO.	
		//		P.O. Box 1079 Portland, Maine 04104		C141199	