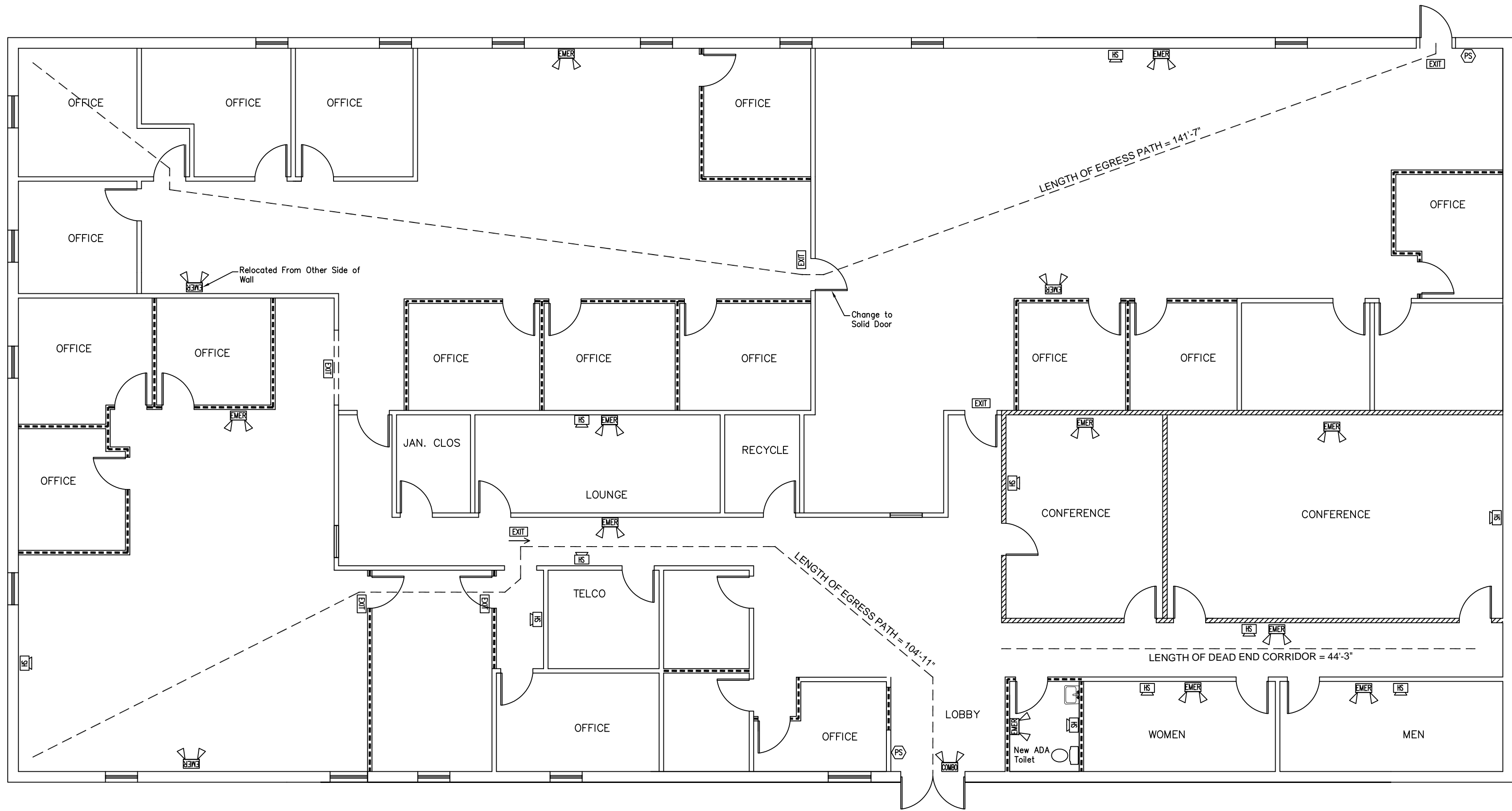
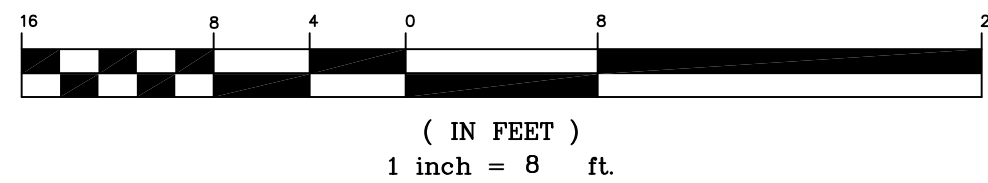


LIFE SAFETY LEGEND	
	EMERGENCY LIGHTS
	EXIT SIGNS
	COMBINATION EMERGENCY LIGHTS / EXIT SIGN
	FIRE EXTINGUISHER 7.5" APART MAXIMUM 10 LB. "ABC" CHEMICAL
	SMOKE DETECTOR
	SMOKE / CARBON DETECTOR
	HORN STROBE
	HEAT DETECTOR
	PULL STATION

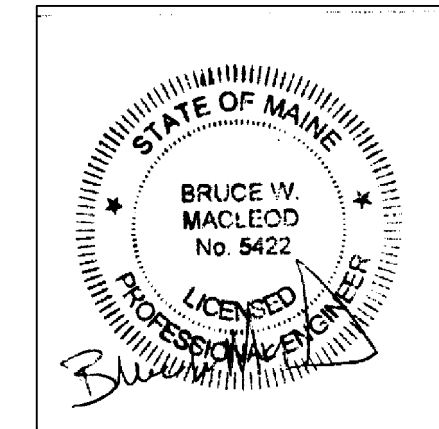


WORKER'S COMPENSATION BOARD  
1037 FOREST AVE  
PORTLAND, ME

GRAPHIC SCALE



- 3 \_\_\_\_\_
- 2 \_\_\_\_\_
- 1 \_\_\_\_\_



OWNER: A. HAUSMANN ASSOCIATES 380 WARREN AVE. PORTLAND, ME.		
 90 Bridge Street, Suite 252 Westbrook, ME 04092 207.839.0980		
WORKER'S COMPENSATION BOARD 1037 FOREST AVE. PORTLAND, ME.		
TITLE: LIFE SAFETY PLAN		
DATE: 11/9/15	DRAWN BY: DB	DRAWING NUMBER:
SCALE: as noted	PROJ NO: 2015-045	LS-1