

Owner

Prepared For:

Consultant:

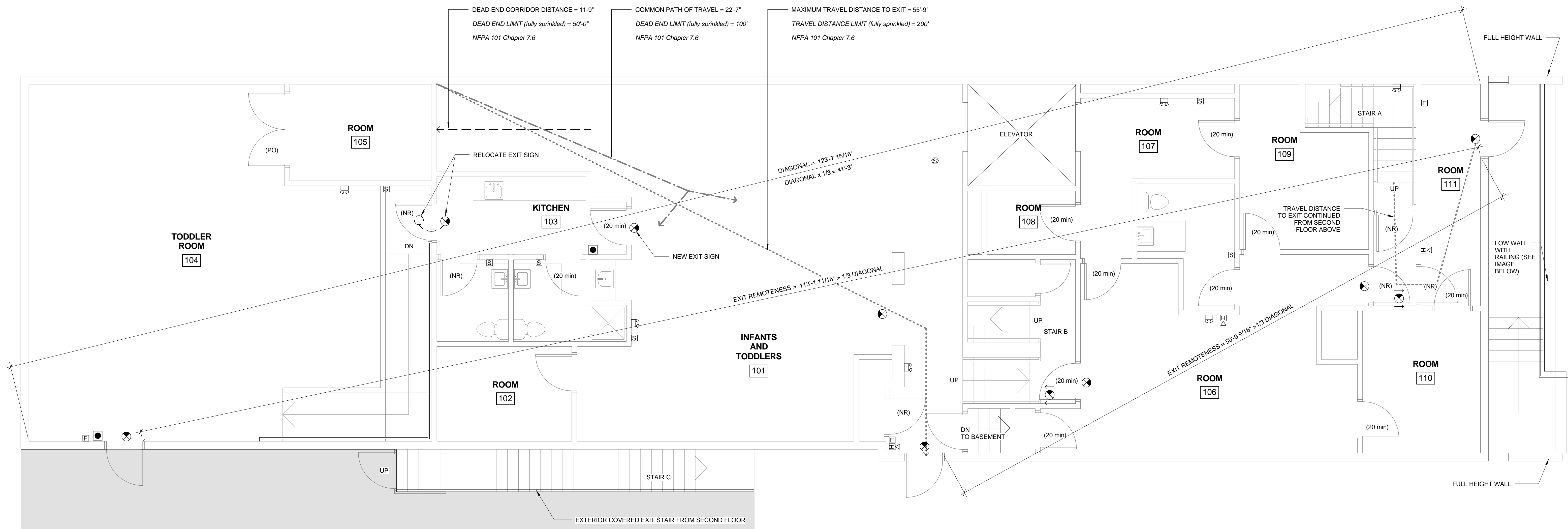
Architect:  
**ARCHETYPE** architects  
 48 Union Wharf Portland, Maine 04101  
 (207) 772-6022 ARCHETYPE@ARCHETYPEPA.COM

Project:  
 1037 Forest Ave  
 1037 Forest Avenue Portland, Maine

Revisions:

Date: 12-16-2014  
 Scale: As indicated  
**First Floor Life Safety Plan**

**LS1.1**



2 FOREST AVE ENTRANCE  
 1/2" = 1'-0"

SMOKE AREA	SZ#
NEW WALL - SMOKE PART.	○○○○
NEW WALL - 1 HOUR	1-1-1
NEW WALL - 2 HOUR	2-2-2
DEAD END CORR. TRAVEL LENGTH	---
COMMON PATH OF TRAVEL LENGTH	→
MAXIMUM TRAVEL DISTANCE TO EXIT	---
EXIT ENTRANCE	⊕
EMERGENCY LIGHT	⊕
SMOKE DETECTOR	⊕
FIRE ALARM PULL STATION	⊕
HORN STROBE	⊕
STROBE	⊕
FIRE EXTINGUISHER	●

LIFE SAFETY LEGEND  
 1/4" = 1'-0"

1 1ST FLOOR - LIFESAFETY  
 1/4" = 1'-0"