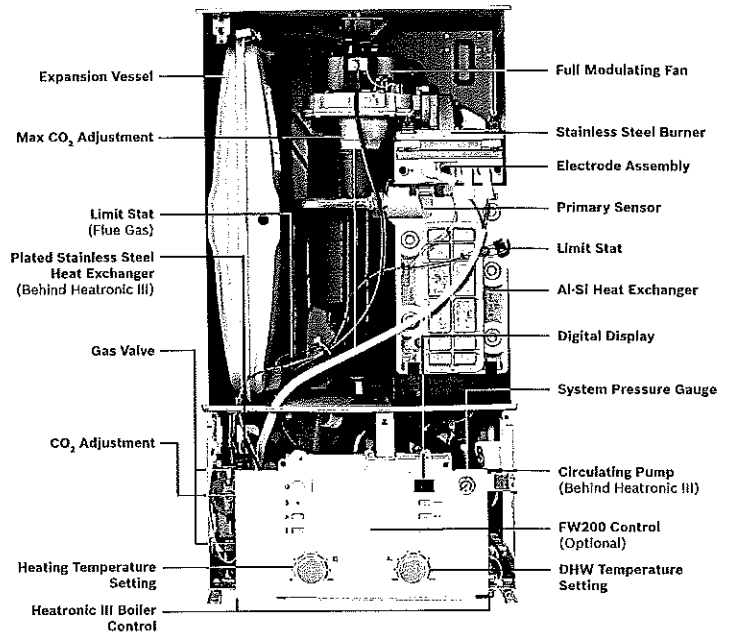


Greenstar Condensing Boiler

- ▶ Two Models—space heating only, or combi-boiler for space heating and up to 4 GPM of tankless water heating
- ▶ Ultra-efficient condensing technology—up to 98.7% with low temperature applications
- ▶ Vents with PVC, CPVC and PP piping
- ▶ Simple & intelligent control options available, optimizing boiler efficiency and fuel consumption
- ▶ All models feature ALSi heat exchanger, 3 speed Grundfos integrated pump, FW200 outdoor reset control, Heatronic III boiler control, hydronic manifold bracket, and twin pipe flue adapter
- ▶ 10-Year Full / Limited Lifetime Heat Exchanger Warranty and Limited 5-Year Parts & Labor Warranty[§]

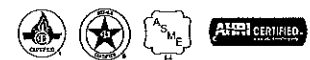


	Heating & Tankless Hot Water				Heating*			
	Greenstar Combi 100	Greenstar Combi 131	Greenstar Combi 151	Greenstar 57	Greenstar 79**	Greenstar 100	Greenstar 131	Greenstar 151
Models	ZWB28-3	ZWB35-3	ZWB42-3	ZBR16-3	ZBR21-3	ZBR28-3	ZBR35-3	ZBR42-3
Part Number	7738100002	7738100256	7713331041	7712231416	7738100322	7712231415	7712231414	7712231413
Performance Specifications								
Fuel	NG / LP							
Input Maximum (MBH)	100.8	131.9	151.6	57.2	79.2	100.8	131.9	151.6
Input Minimum (MBH)	34.6	36.0	36.0	12.9	23.9	24.6	36.0	36.0
DOE Heating Capacity (MBH)	89.4	116.7	134.4	50.8	71	89.4	116.7	134.4
Net I=B=R (MBH)	79	103	117	45	62	79	103	117
AFUE	95%	95%	95%	95%	95%	95%	95%	95%
DHW Flow Max (ΔT at 72°F), GPM	2.65	3.2	4.0	not applicable				
Water Volume, Gal (L)	0.952 (3.5)							
Technical Data								
Weight, lbs (Without Packaging, kg)	110.2 (50)				103.6 (47)			
Dimensions, in (W x H x D)	17 ⁷ / ₈ x 33 ¹ / ₂ x 13 ⁹ / ₁₀							
Minimum Recommended Pipe Size, in	1							
Supply Tappings, in	1							
Return Tappings, in	1							
Domestic Cold Water Supply, in	¾		¾		not applicable			
Domestic Hot Water Supply, in	¾		¾		not applicable			
Gas Connection Size, in	¾							
Vent Size, in	2 - 3							
Vent Material	PVC / CPVC / PP							
Combustion Air Size, in	2 - 3							
High Altitude Capability	No De-Rating up to 6,000'	No De-Rating up to 6,000'	De-Rating 3% per 1,000'	No De-Rating up to 6,000'	No De-Rating up to 6,000'	No De-Rating up to 6,000'	No De-Rating up to 6,000'	De-Rating up to 6,000' 3% per 1,000'
Gas Pressure Minimum inches water column	NG 3.5"							

*Heat only Greenstar models may be used with indirect water tanks to provide domestic hot water.

**Available late 2013

§Copies of original warranties in their entirety are available at www.boschheatingandcooling.com



Bosch Thermotechnology Corp.

Londonderry, NH • Ft. Lauderdale, FL
 General Inquiries: 1-866-330-2725
 Contractor Technical Support: 1-800-283-3787
www.boschheatingandcooling.com

Copyright© 2013 Bosch Thermotechnology Corp. All rights reserved.
 75S995006 9/2013