

Greenstar

The world's best selling condensing gas boiler



BOSCH

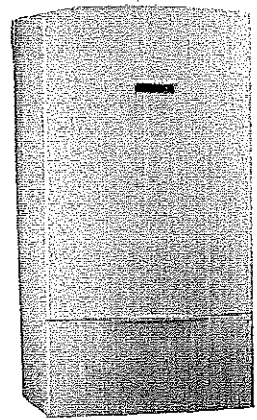
Invented for life

Pro Combi Model

Greenstar 151P Gas Condensing Combi.
All the essential features with the quality,
and reliability you expect from Bosch.

Greenstar 151P Features and Benefits

- ▶ Provides heat and up to 4gpm domestic hot water in one compact, lightweight wall-mounted unit.
- ▶ Standard HT3 control included, additional control options are available as an accessory
- ▶ Single zone utilizes boiler pump, multi-zone requires a primary/secondary piping or low loss header
- ▶ Can be installed using a variety of venting materials and terminations
- ▶ Peace of mind quality and innovation - over 4 million Greenstar boilers sold worldwide

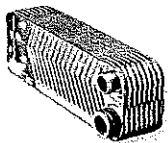


Superior Design and Standard Components



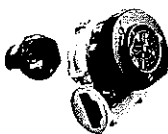
AI-Si Heat Exchanger

Features an ASME approved AI-Si heat exchanger constructed of advanced magnesium-aluminum-silicon alloy offering increased flexibility versus traditional stainless steel. The heat exchanger has a coating that prevents scale build-up, reduces service, maintains high efficiency and extends the life of the boiler



Plated Stainless Steel Heat Exchanger

The high-strength stainless steel flat plate heat exchanger with double passage ensures consistent DHW temperature output based on demand. Its large surface area and advanced technology allows the boiler to condense even while producing DHW and helps reduce the build-up of scale within the heat exchanger.



Full Modulating Fan Assembly

A full modulating fan automatically increases or decreases its speed depending on the heat demand controlling the amount of gas coming into the boiler. This process, called modulation, prevents the boiler from either having too little or too much air in the unit for optimal combustion, ensuring high efficiency.



Heatronic III Boiler Control (HT3)

Bosch Heatronic III, a device integrated into the boiler, provides instant access to the hot water and heating control buttons. Furthermore, it enables the easy setting and testing of many customized appliance functions and applications. The exclusive keypad safety lock feature prevents unwanted tampering with the control.