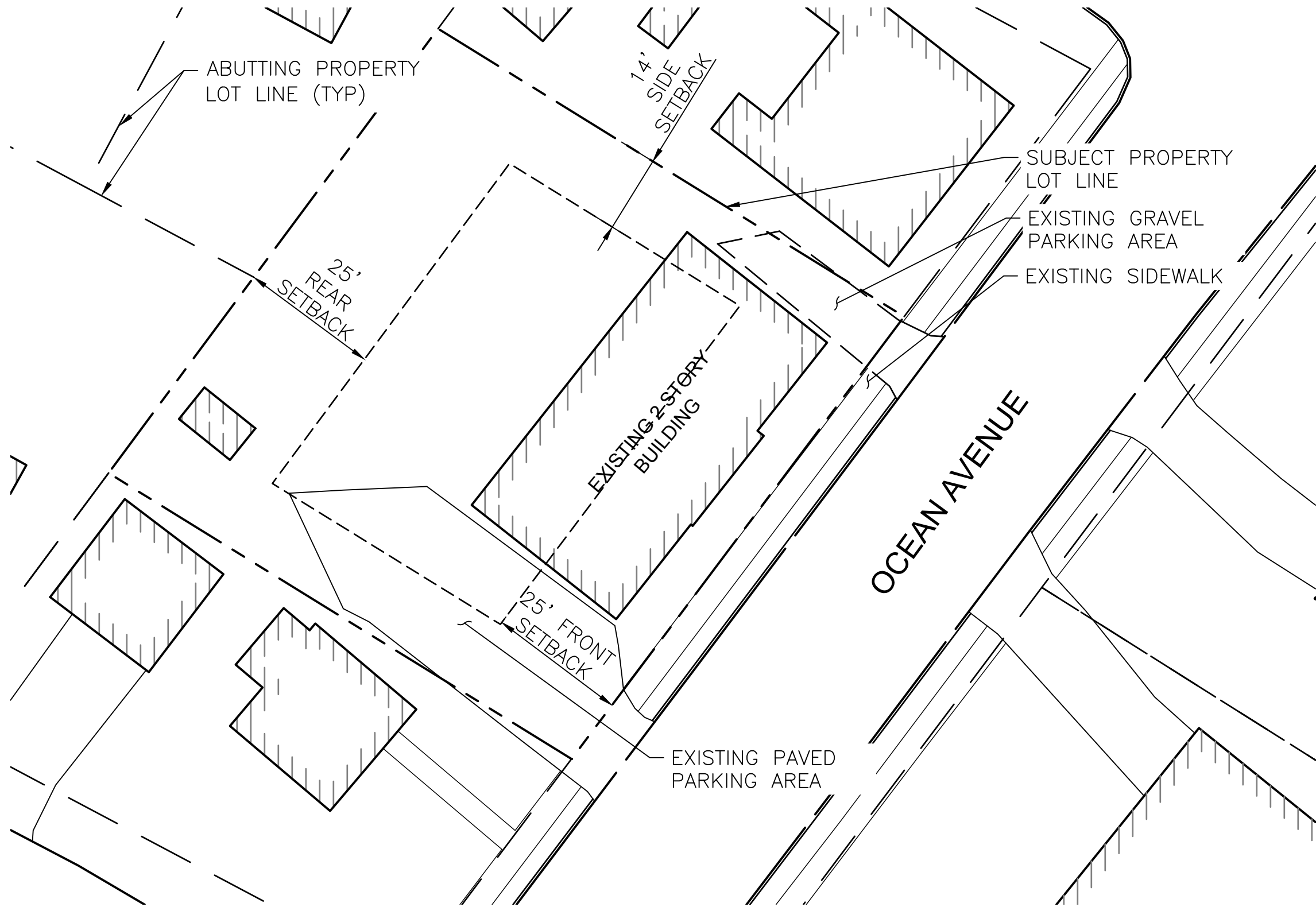




Reviewed for Code Compliance
Permitting and Inspections Department
Approved with Conditions

11/20/2018



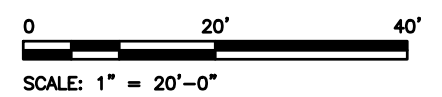


NOTES:

- SUBJECT PROPERTY:
218 OCEAN AVENUE
MAP 140 LOTS 15&16
- PLOT PLAN DEVELOPED UTILIZING
CITY OF PORTLAND GIS DATA.



Reviewed for Code Compliance
Permitting and Inspections Department
Approved with Conditions
11/20/2018



PLOT PLAN — 218 OCEAN AVENUE
SCALE: 1" = 20'-0"

| | | | | | | | |
|-----|-----------------------|--------|--------|--|---------|--|--|
| | | | | KAPATHIANSIS BUILDING PORTLAND, MAINE | | | |
| | | | | FOUNDATION REPAIR PORTLAND, MAINE | | | |
| | | | | PLOT PLAN - 218 OCEAN AVENUE | | | |
| 0 | ISSUED FOR PERMITTING | ZRJ | CBC | CBC | 9/28/18 | | |
| REV | DESCRIPTION | DWN BY | CKD BY | APP BY | DATE | | |

PLEASE NOTE: THIS DOCUMENT MAY NOT ACCURATELY REPRESENT THE FINAL DOCUMENT. ONLY AN ENGINEER, ARCHITECT OR SURVEYOR SIGNED, SEALED AND DATED PAPER COPY, PROVIDED BY THIS OFFICE, MAY BE UTILIZED FOR BIDDING OR CONSTRUCTION PURPOSES.

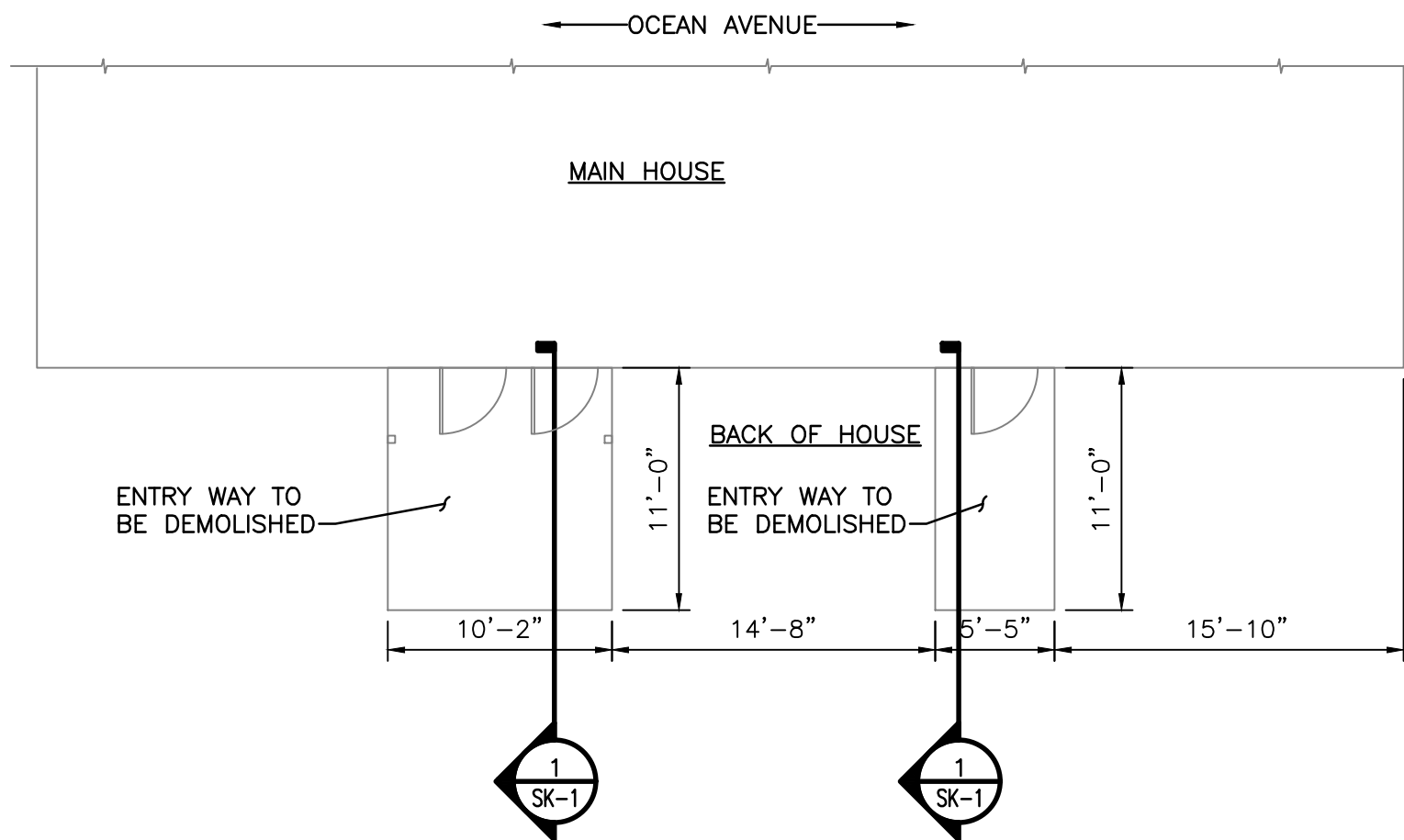


47A York St
Portland, ME
04101
207.553.7753

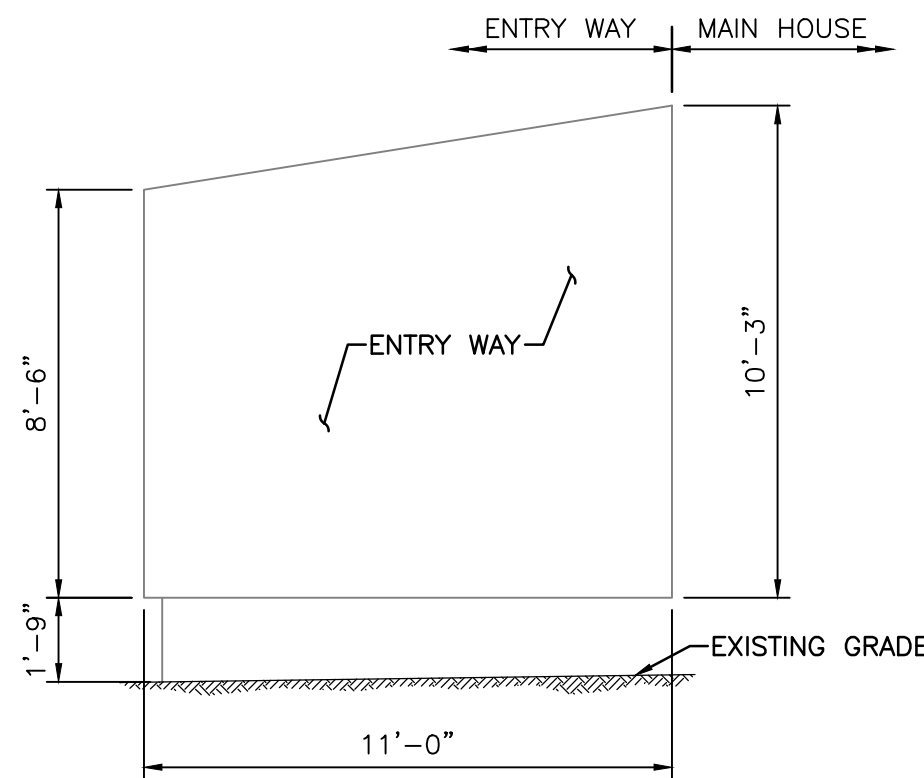
SIZE: AS NOTED
DATE: 10/22/2017
DES BY: DESIGN BY
OWN BY: DRAWN BY
CKD BY: CHK BY

PROJECT NO.
336.004.001
SHEET
1 OF 2

DRAWING NO.
C-101



FIRST FLOOR DEMOLITION PLAN
SCALE: 1/8" = 1'-0"



SECTION 1 SK-1
SCALE: 1/4" = 1'-0"

NOTES:

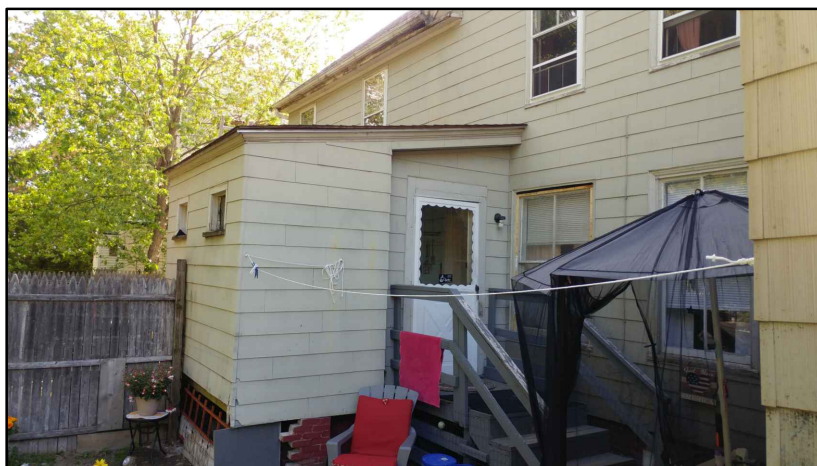
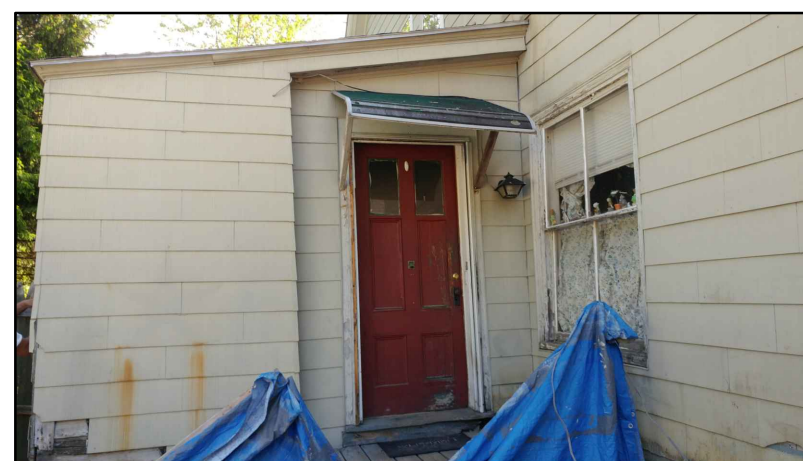
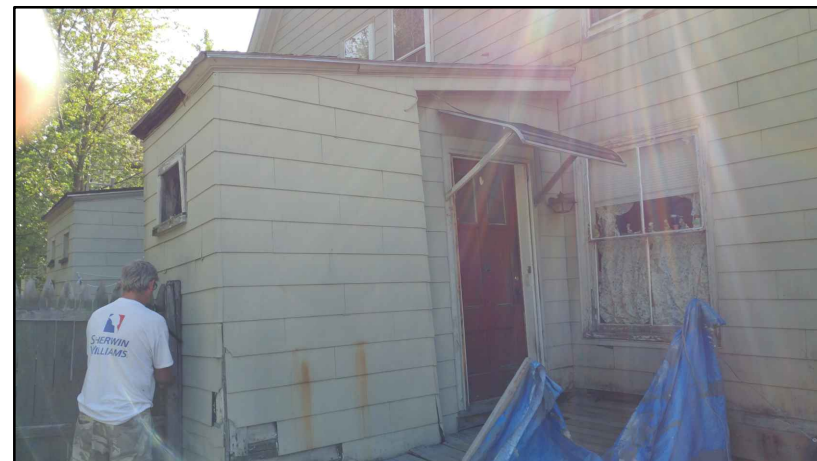
1. REMOVE/DEMOLISH ENTRY WAYS
2. REPLACE ENTRY WAYS WITH PT DECK AND STAIR TO GRADE.
3. GRADE BELOW ENTRY WAYS SHALL HAVE POSITIVE DRAINAGE AWAY FROM MAIN HOUSE.
4. INFILL MAIN HOUSE SIDING AT ENTRY LOCATION TO MATCH EXISTING SIDING.

DECK SCOPE OF WORK:

1. 4x4 PT POSTS @ 6' MAXIMUM SPACING.
2. 2x8 PT FRAMING.
3. DECK GUARD RAILS 42" HIGH.
4. STAIRS - GUARD RAIL @ 42" HIGH, HANDRAIL @ 36" HIGH, RISE/RUN: 7"x11".
5. DECKING: 5/4x6 PT.



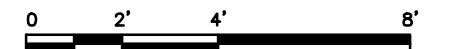
Reviewed for Code Compliance
Permitting and Inspections Department
Approved with Conditions
11/20/2018



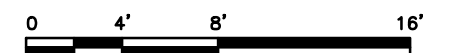
PLAN



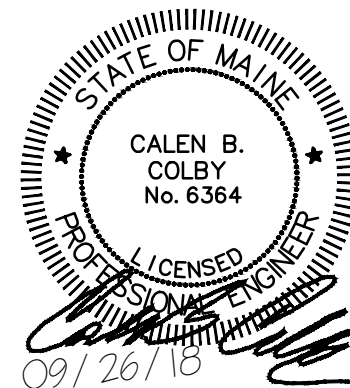
NORTH



SCALE: 1/4" = 1'-0"



SCALE: 1/8" = 1'-0"

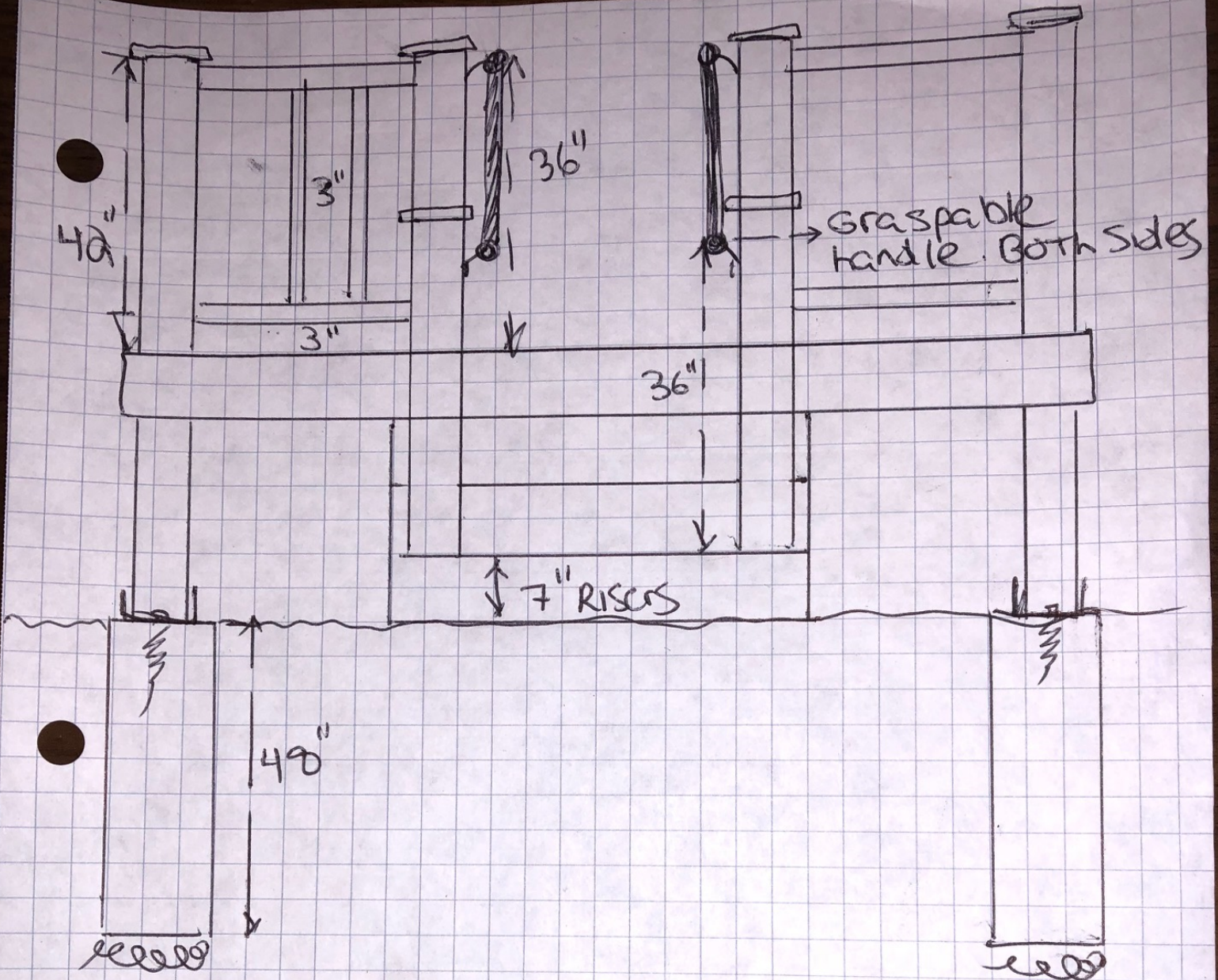


| | | | | | | | |
|-----|-------------------------|--------|--------|---|------------|-------------|-------------|
| | | | | KAPATHANSIS BUILDING PORTLAND, MAINE | | | |
| | | | | ENTRY WAY DEMOLITION PORTLAND, MAINE | | | |
| | | | | FLOOR PLAN AND NOTES | | | |
| REV | DESCRIPTION | DWN BY | CKD BY | APP BY | DATE | | |
| 1 | REV'D PER CEO COMMENTS | BCH | CBC | CBC | 09/26/18 | | |
| 0 | ISSUED FOR CONSTRUCTION | BCH | CBC | CBC | 09/13/2018 | | |
| | | | | | | PROJECT NO. | 336.004.002 |
| | | | | | | SHEET | 1 OF 1 |
| | | | | | | DRAWING NO. | |
| | | | | | | SK-1 | |

PLEASE NOTE: THIS DOCUMENT MAY NOT ACCURATELY REPRESENT THE FINAL DOCUMENT. ONLY AN ENGINEER, ARCHITECT OR SURVEYOR SIGNED, SEALED AND DATED PAPER COPY, PROVIDED BY THIS OFFICE, MAY BE UTILIZED FOR BIDDING OR CONSTRUCTION PURPOSES.

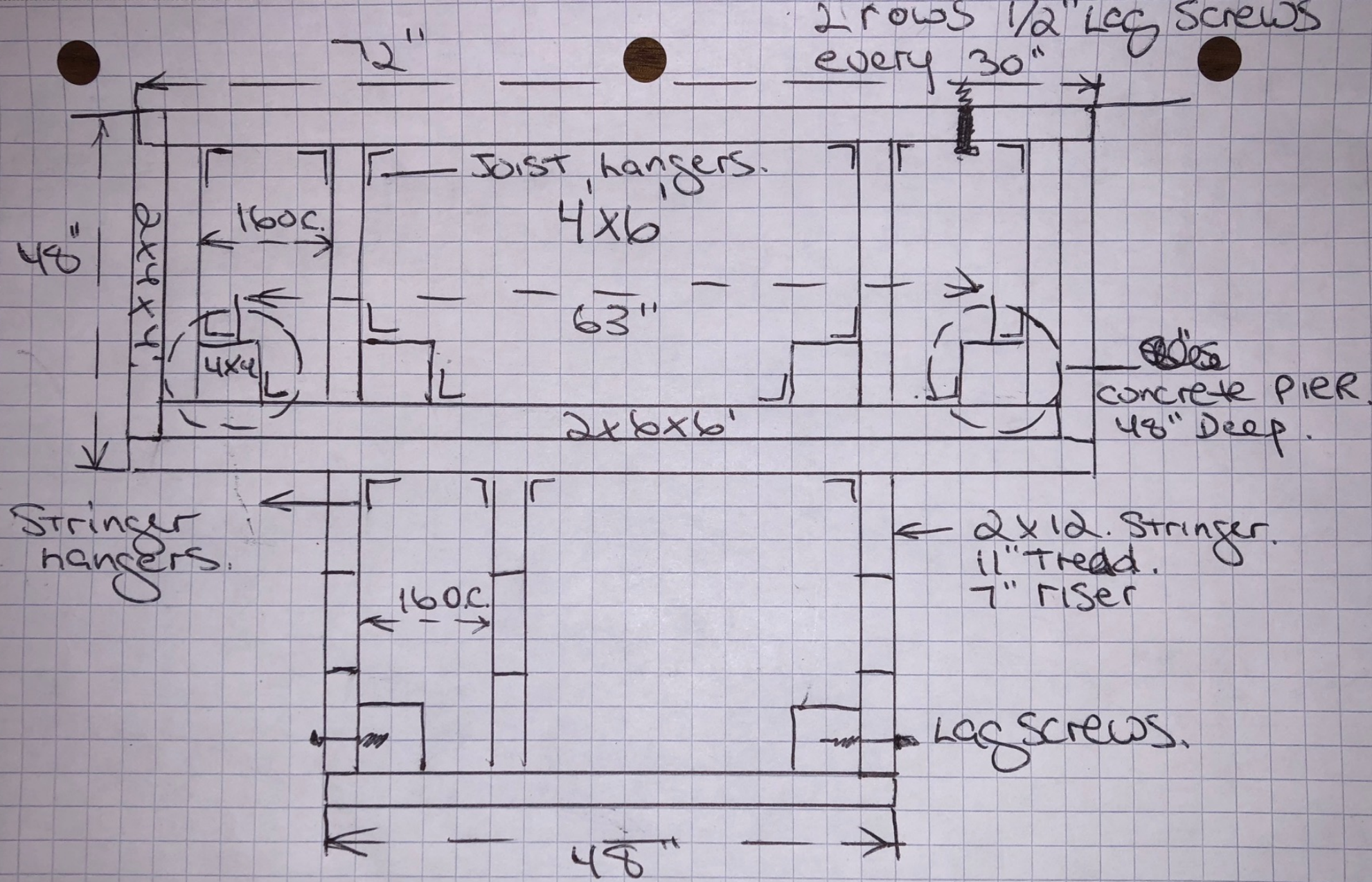
Colby Company
engineering
47A York Street
Portland, Maine 04101
207.553.7753
colbycoengineering.com

SIZE: AS NOTED
DATE: 09/13/18
DES BY: CBC
DWN BY: BCH
CKD BY: CBC



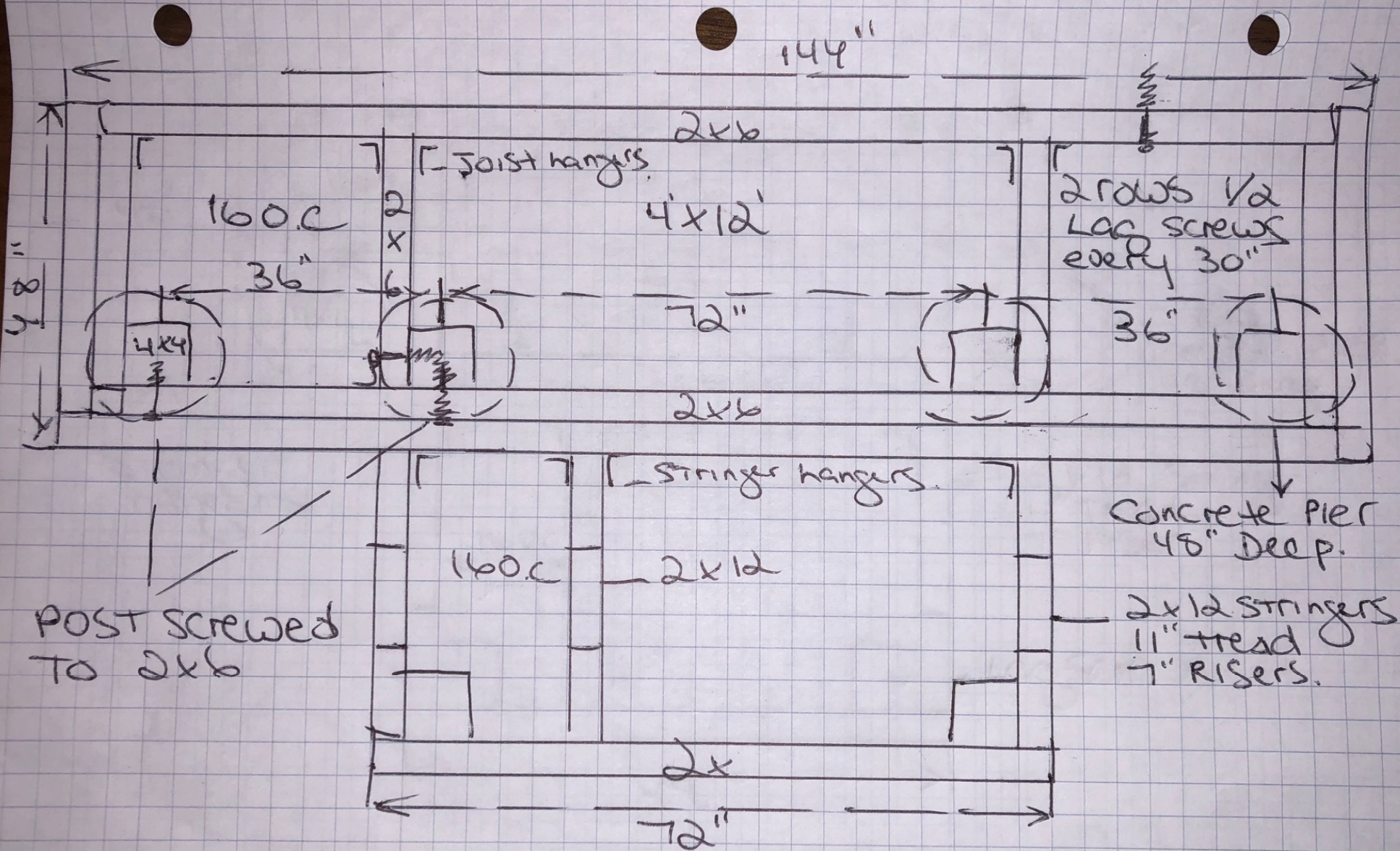
Reviewed for Code Compliance
 Permitting and Inspections Department
 Approved with Conditions

11/20/2018



Reviewed for Code Compliance
 Permitting and Inspections Department
 Approved with Conditions

11/20/2018



Reviewed for Code Compliance
Permitting and Inspections Department
Approved with Conditions

11/20/2018



Reviewed for Code Compliance
Permitting and Inspections Department
Approved with Conditions

11/20/2018

