
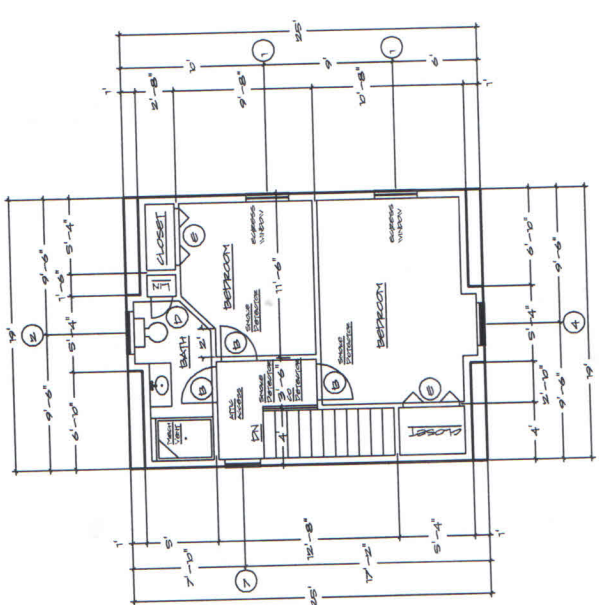
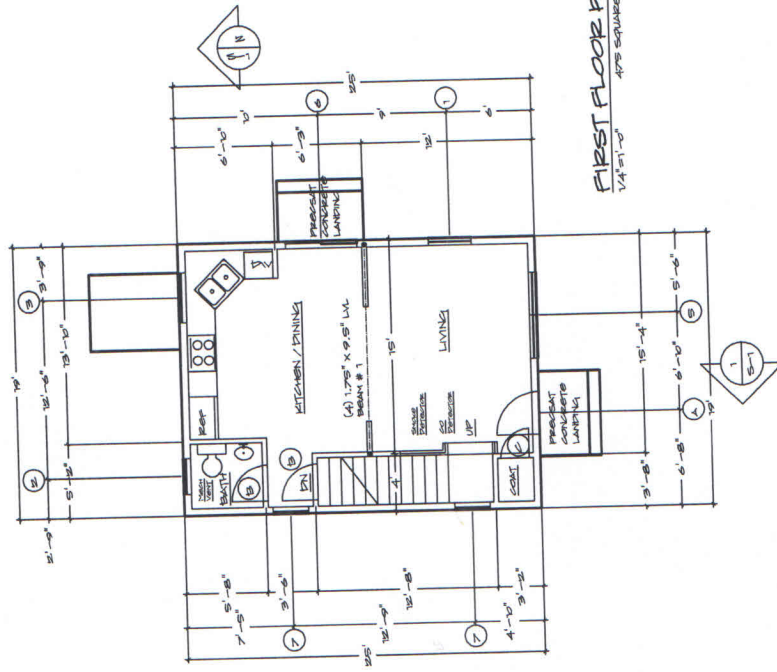


# -A2 Floor Plans & Schedule

	<b>RESIDENTIAL DESIGN INC.</b> DESIGNERS CONSULTANTS CONSTRUCTION DRAWINGS P.O. BOX 87 CONY, ME 04838 TEL: 603-881-9581 WWW.RESIDENTIALDESIGN.COM	<b>AMERICAN INSTITUTE OF BUILDING DESIGN</b> NORTHEAST	<b>PROJECT</b> SINGLE FAMILY HOME GEORGE ST PORTLAND, ME	<b>SHEET TITLE</b> FLOOR PLANS	<b>DATE</b> 7-24-2017	<b>REVISIONS</b>	<b>SHEET NUMBER</b> A-2
---	--	---	---	-----------------------------------	--------------------------	------------------	----------------------------



### WINDOW SCHEDULE

NO.	QTY	DESCRIPTION	ROUGH OPENING	ENERGY
1	3	DOUBLE HUNG WINDOW # 3040	3'-0" X 5'-0"	15 @ 257
2	2	DOUBLE HUNG WINDOW # 3448	3'-0" X 4'-0"	12 @ 257
3	1	CASEMENT # 4842-2	4'-0" X 3'-0"	14 @ 257
4	1	CASEMENT # 3436-2	3'-0" X 3'-0"	4 @ 257
5	1	DOUBLE HUNG WINDOW # 2240-2	6'-0" X 5'-0"	30 @ 257
6	1	SLIPING GLASS PATIO DOOR	6'-0" X 6'-0"	34 @ 257
7	3	AWNING WINDOW # 3030	2'-6" X 2'-6"	6 @ 257

ALL ROUGH OPENING DIMENSIONS TO BE VERIFIED WITH MANUFACTURERS  
ALTERNATE WINDOW MANUFACTURERS REQUIRED TO SATISFY ENERGY MODEL PRICE TO ROUGH FRAMING  
REQUIREMENTS FOR INTERNATIONAL RESIDENTIAL CODE

### DOOR SCHEDULE

NO.	QTY	DESCRIPTION	DOOR SIZE	ENERGY
A	2	EXT INSUL. ENTRY DOOR	3'-0" X 6'-8"	16 U.S.
B	1	INTERIOR DOOR	3'-0" X 6'-8"	
C	1	INTERIOR DOOR	3'-0" X 6'-8"	
D	1	INTERIOR DOOR	4'-0" X 6'-8"	