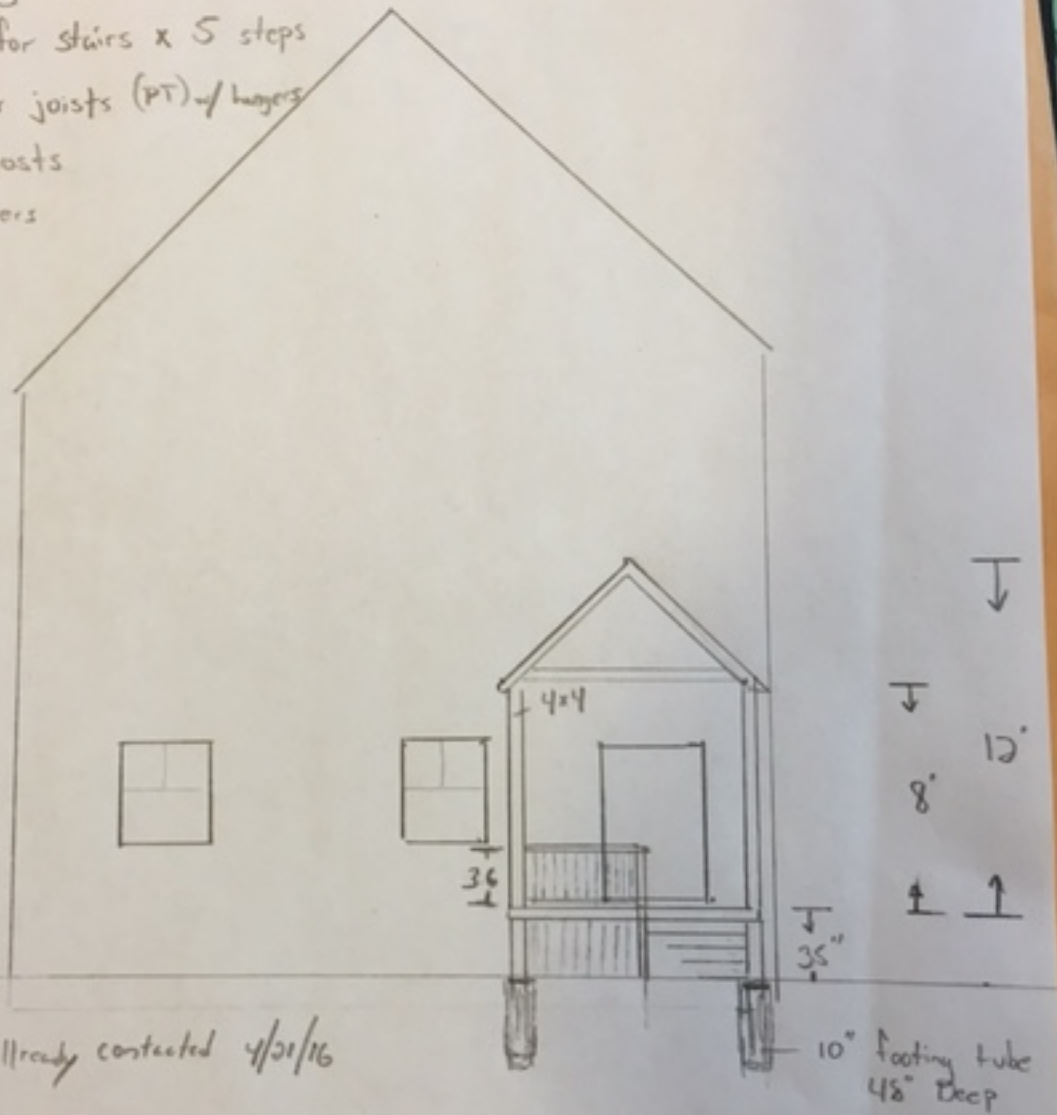


Proposed Plan

- 30 S.F. of Deck (4' x 8')
- 15 SF for stairs
- 36" Railing high, ballisters on 4" centers
- 7" Rise for stairs x 5 steps
- 2x10 floor joists (PT) w/ hangers
- 4x4 PT posts
- 2x6 Rafters



"Dig Safe" already contacted 4/21/16

| 36" | Stair Width  
| 8' | Deck Width  
Deck Depth = 4'