

Walton Street 3 Unit

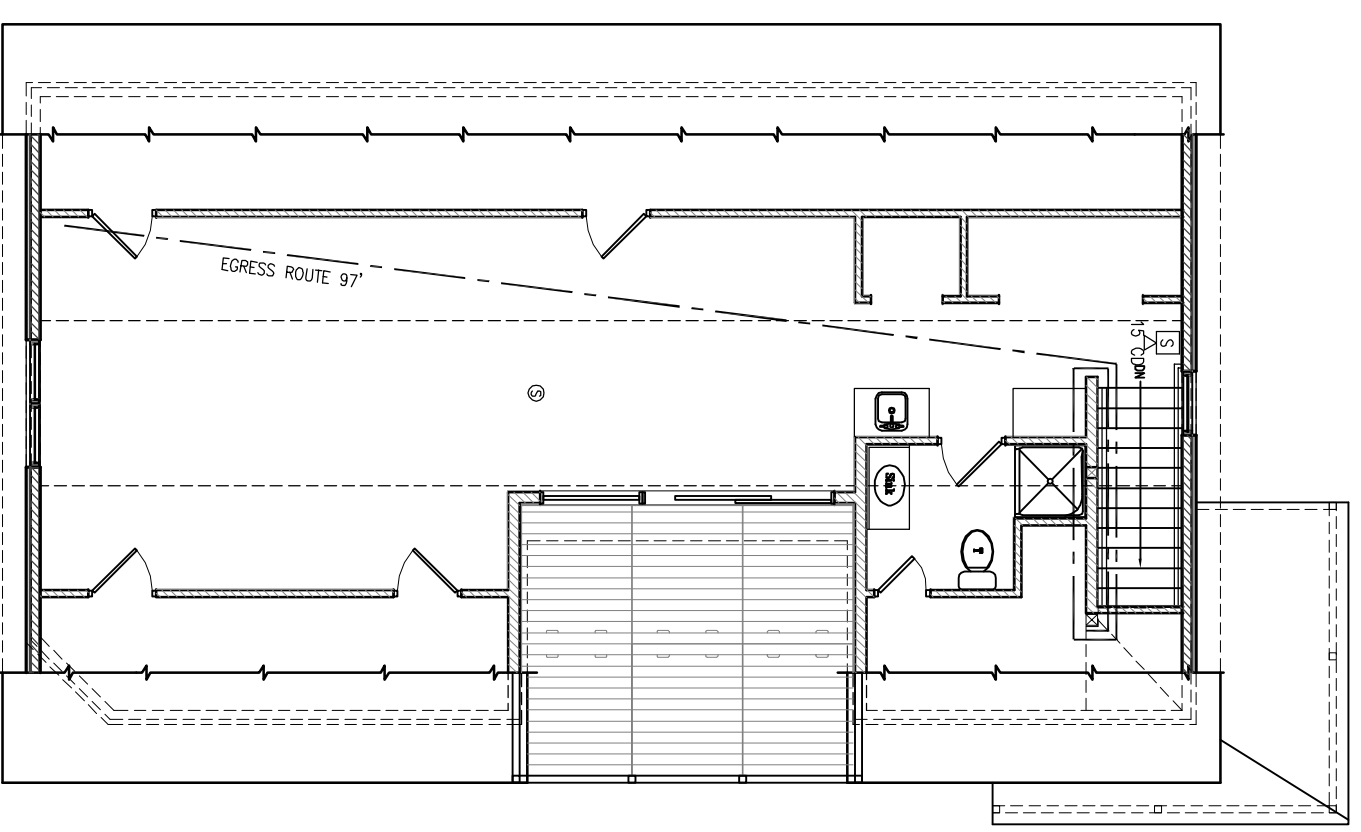
15 Walton Street
 Portland Maine 04103

JOB: 11024

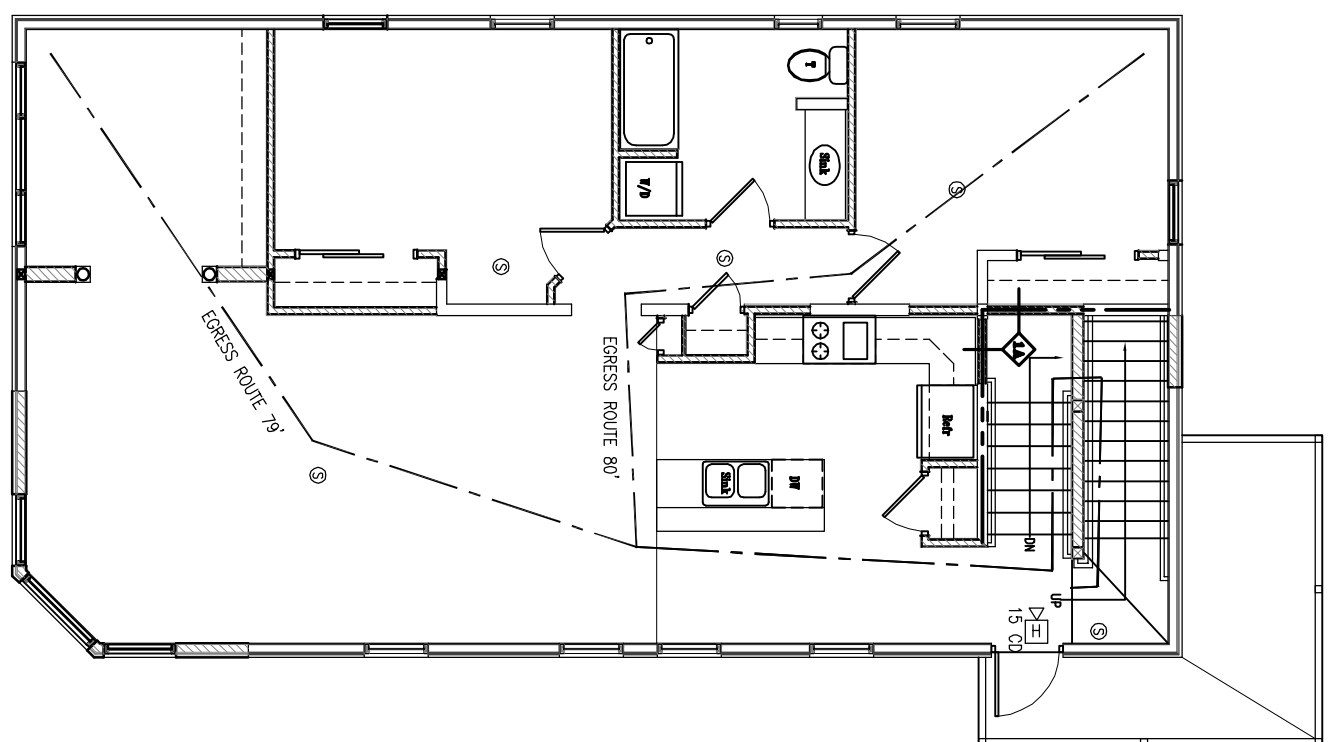
ISSUE DATE:	
PRELIM:	08-25-11
Reboard	Not Reqd
CDs	10-12-11
REV. 1	-
REV. 2	-
PRINT	10-12-11

BASEMENT, 1st, 2nd, 3rd & 4th FLOOR
 LIFE SAFETY PLANS

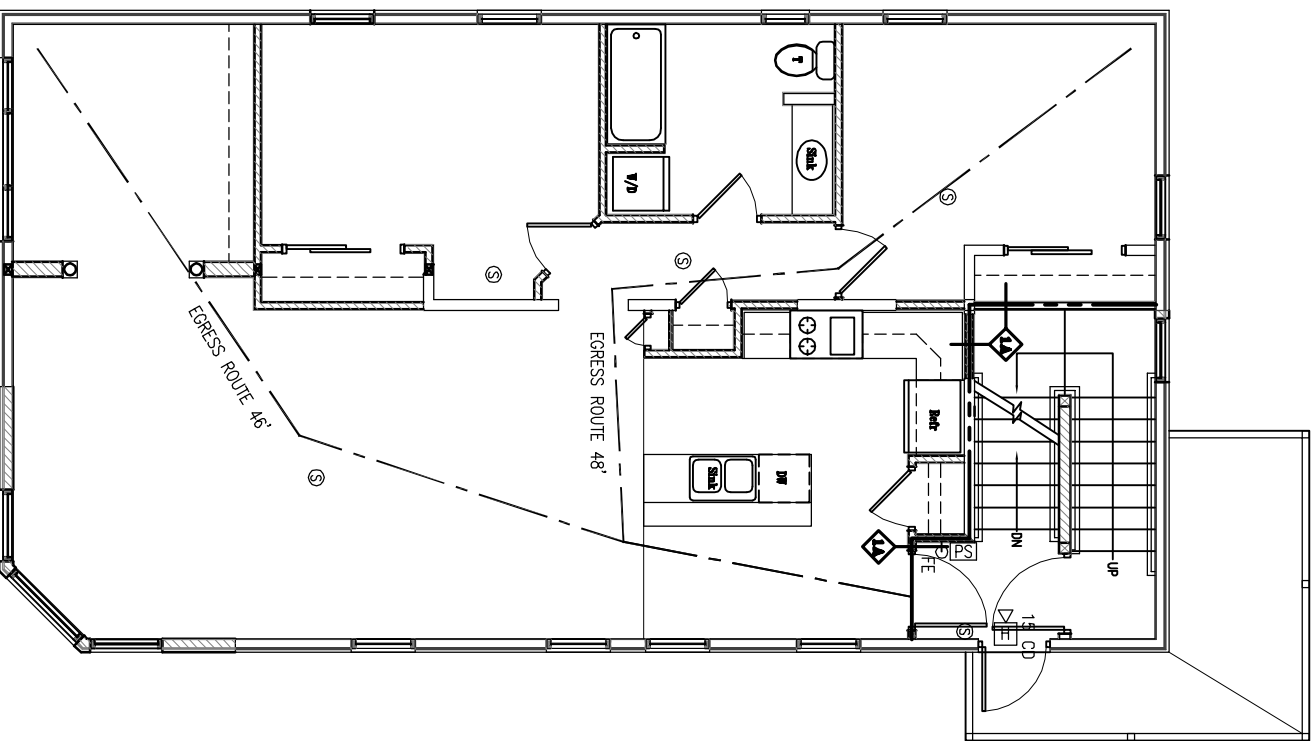
LS1.0



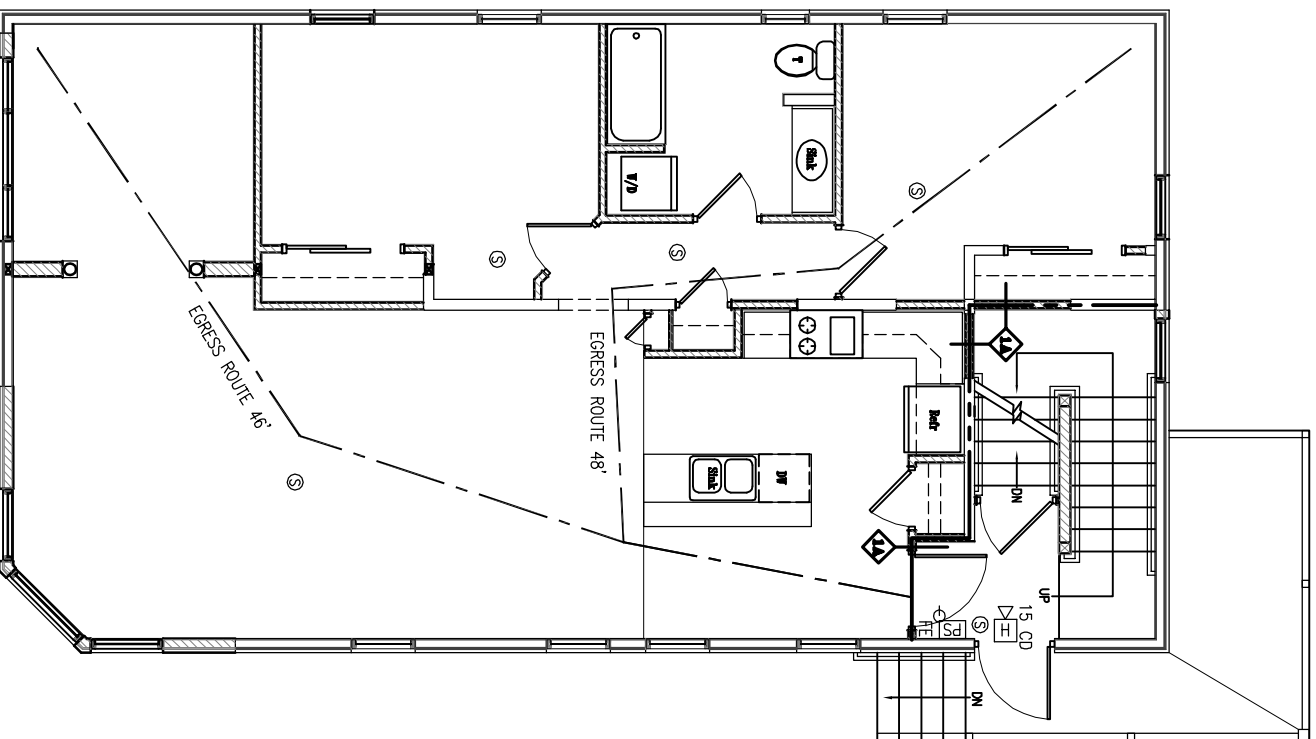
FOURTH FLOOR LIFE SAFETY PLAN
 SCALE: 1/8" = 1'-0"



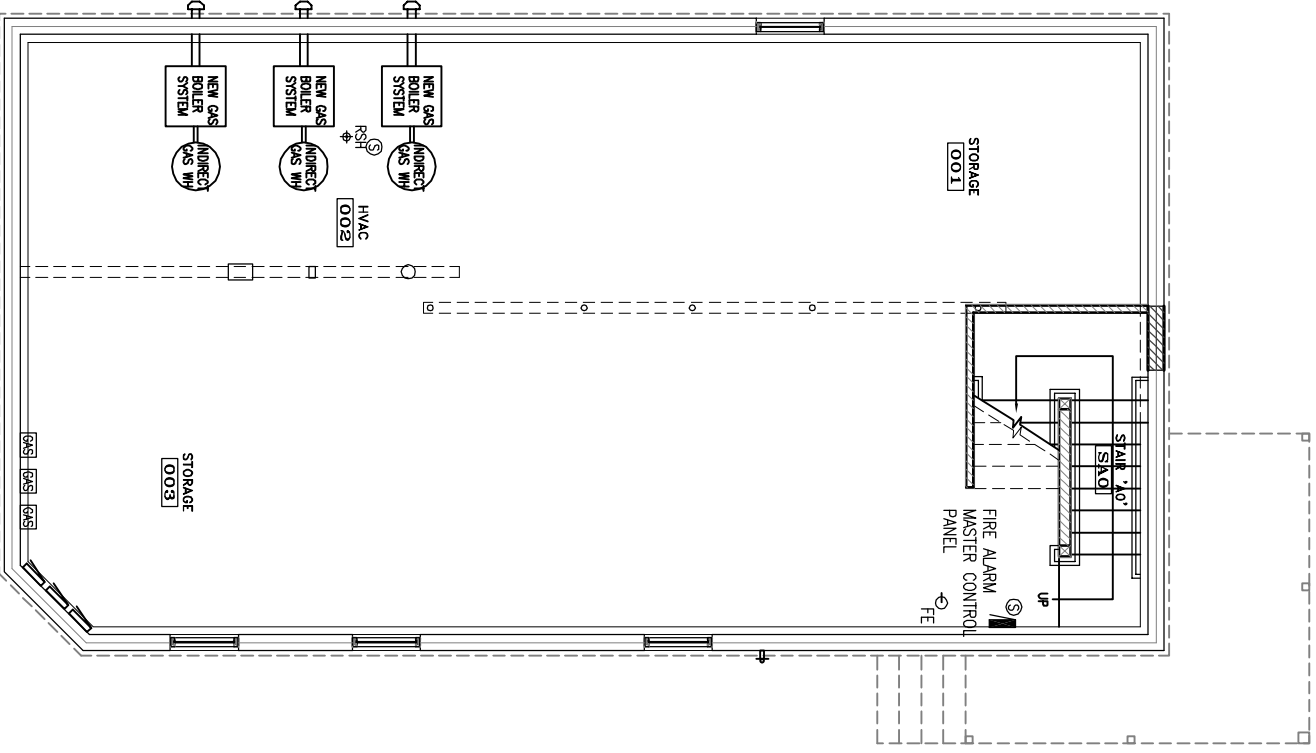
THIRD FLOOR LIFE SAFETY PLAN
 SCALE: 1/8" = 1'-0"



SECOND FLOOR LIFE SAFETY PLAN
 SCALE: 1/8" = 1'-0"



FIRST FLOOR LIFE SAFETY PLAN
 SCALE: 1/8" = 1'-0"



BASEMENT LIFE SAFETY PLAN
 SCALE: 1/8" = 1'-0"

FIRE PROTECTION LEGEND

- FIRE EXTINGUISHER 1 1/2 ABC
- EXIT LIGHT
- SMOKE ONLY WITH CAMELLA RATING AS NOTED
- SMOKE DETECTOR (REQUIRED)
- FIRE ALARM CONTROL PANEL
- FIRE ALARM MASTER CONTROL PANEL
- COMBINATION LOCK/DOORSET RIM
- FALL STATION
- EXIT SIGN
- FIRE ALARM CONTROL PANEL
- FIRE ALARM MASTER CONTROL PANEL
- FIRE ALARM CONTROL PANEL
- FIRE ALARM MASTER CONTROL PANEL
- FIRE ALARM CONTROL PANEL
- FIRE ALARM MASTER CONTROL PANEL
- FIRE ALARM CONTROL PANEL
- FIRE ALARM MASTER CONTROL PANEL
- FIRE ALARM CONTROL PANEL
- FIRE ALARM MASTER CONTROL PANEL
- FIRE ALARM CONTROL PANEL
- FIRE ALARM MASTER CONTROL PANEL

ABBREVIATIONS

- CD = CASD DRAWING
- NS = NOT SPECIFIED
- SCN = SELF-CLOSING HINGES
- MS = MILD STEEL
- MS = MILD STEEL SPRING SYSTEM
- NS = NOT SPECIFIED
- LSR = LAMINATED GLASS
- SP = STAIR PANEL
- ST = STAIR TREAD
- EX = EXISTING TO REMAIN
- N = NEW

LIFE SAFETY NOTES:

1. PROVIDE INTERCONNECTED SMOKE DETECTOR SYSTEM SYSTEM TO BE INVOICED BY "BATTERY BACK-UP"

PERMIT SET 10-12-11