



## Walton Street 3 Unit

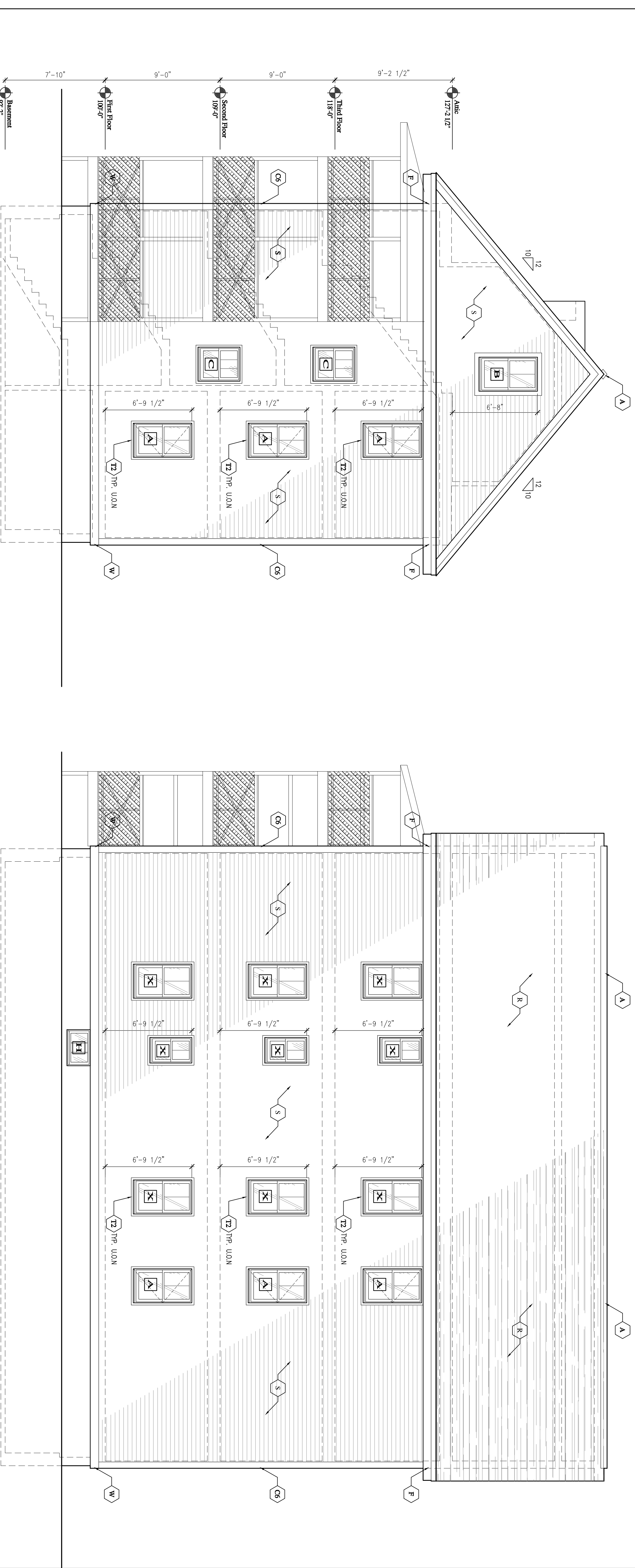
15 Walton Street  
 Portland Maine 04103

JOB: 11024

ISSUE DATE	DESCRIPTION
PRELIM.	08-25-11
Board	Not Rec'd
CDs	10-12-11
REV. 1	-
REV. 2	-
PRINT	10-12-11

EXTERIOR  
 ELEVATIONS

# A2.2



REAR ELEVATION  
 SCALE: 1/4" = 1'-0"

SIDE ELEVATION  
 SCALE: 1/4" = 1'-0"

WINDOW SCHEDULE 15 Walton Street Portland 10-7-11

Qty. No.	Size	Type	Gillie Pattern Screen	Remarks
A	2'-8" x 4'-7" VIF	Casement	2 over 1	ESGRESS, WHITE Center Rail
G	2'-8" x 4'-7" VIF	Double Hung	3 over 1	Match Existing
D	3'-0" x 5'-0" VIF	Double Hung	2 over 1	tempered glass
E	4'-0" x 5'-0" VIF	Double Hung	3 over 1	
F	2'-2" x 4'-0" VIF	Double Hung	2 over 1	Multi to G
G	3'-0" x 4'-0" VIF	Double Hung	3 over 1	Multi to F
H	1'-9" x 2'-10" VIF	Double Hung	2 over 1	Multi at street side
X	Existing Windows			Replace Screens as required, Clean and Lubr Tracks

**Notes**  
 Note AA Drawings prior to ordering  
 Field Verify where shown as existing  
 Manufacturer to provide cut sheets for review and owner approval PRIOR to fabrication

**MATERIAL LEGEND:**

- A 3/8" ROLL SCREEN, RIDGE AIR VENT w/ SHINGLE CAP, INSECT SCREEN & 3" THROAT MIN., TYP.
- C4 4" VINYL CORNER BOARDS, TYP.
- C6 6" VINYL CORNER BOARDS, TYP.
- D PREFINISHED BROWN ALUM. DRIP EDGE, TYP.
- F 1/2" AZEK - 1x3 ON 1x10 FASCIA BOARDS, TYP. U/LN
- R 35 YR CERTAINTED HATTRUS ASPHALT ROOFING SHINGLES ON 3/8" FELT w/ ICE & WATER SHIELD @ LOWER 3'-0", TYP.
- S VINYL SIDING SYSTEM, TO MATCH EXIST. VINYL SIDING COLOR & EXPOSURE
- T2 2" VINYL WINDOW TRIM, TYP. U/LN
- T4 4" VINYL WINDOW TRIM
- W 1/2" AZEK 1x8 WATER TABLE

PERMIT SET 10-12-11