



Walton Street 3 Unit

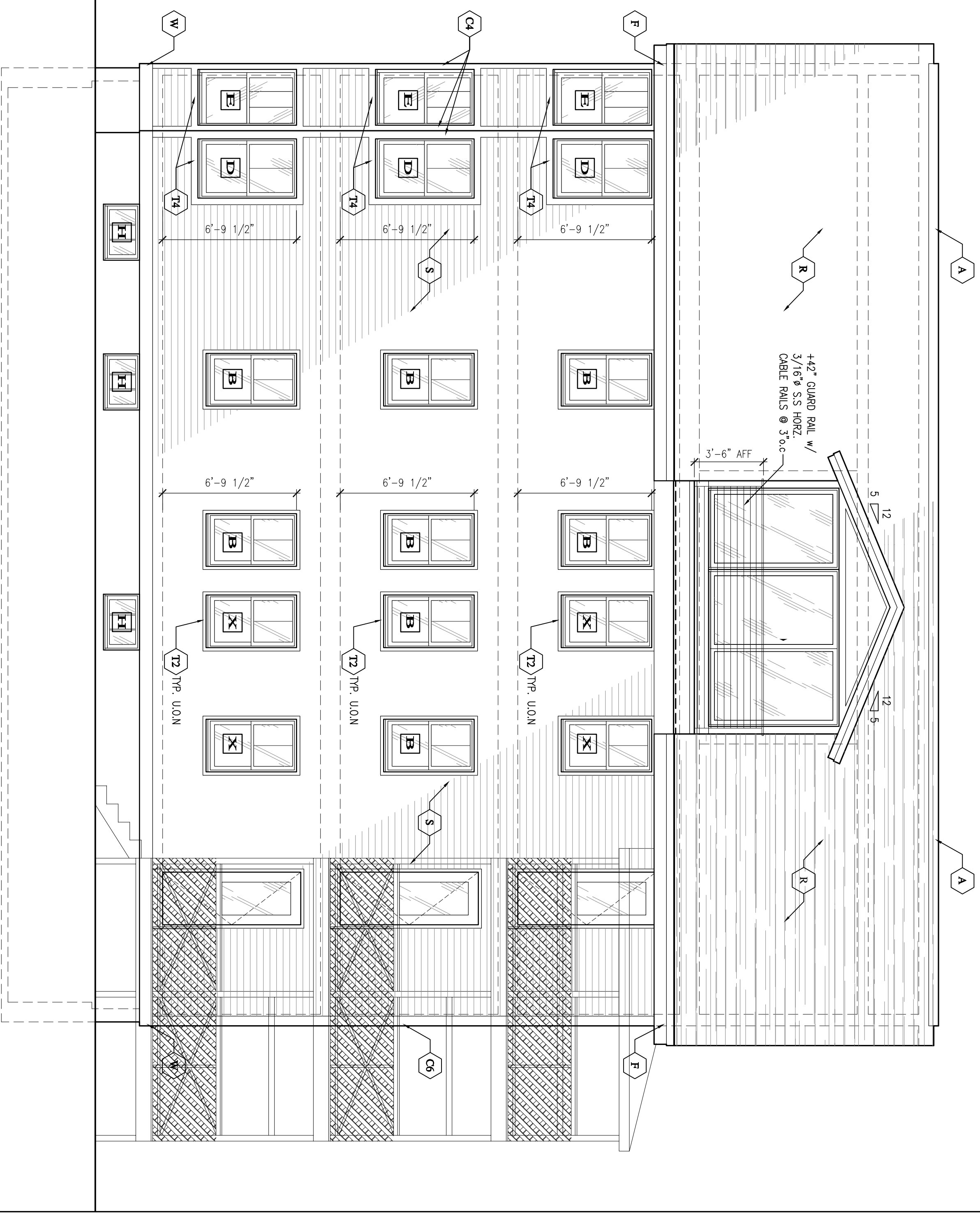
15 Walton Street
 Portland Maine 04103

JOB: 11024

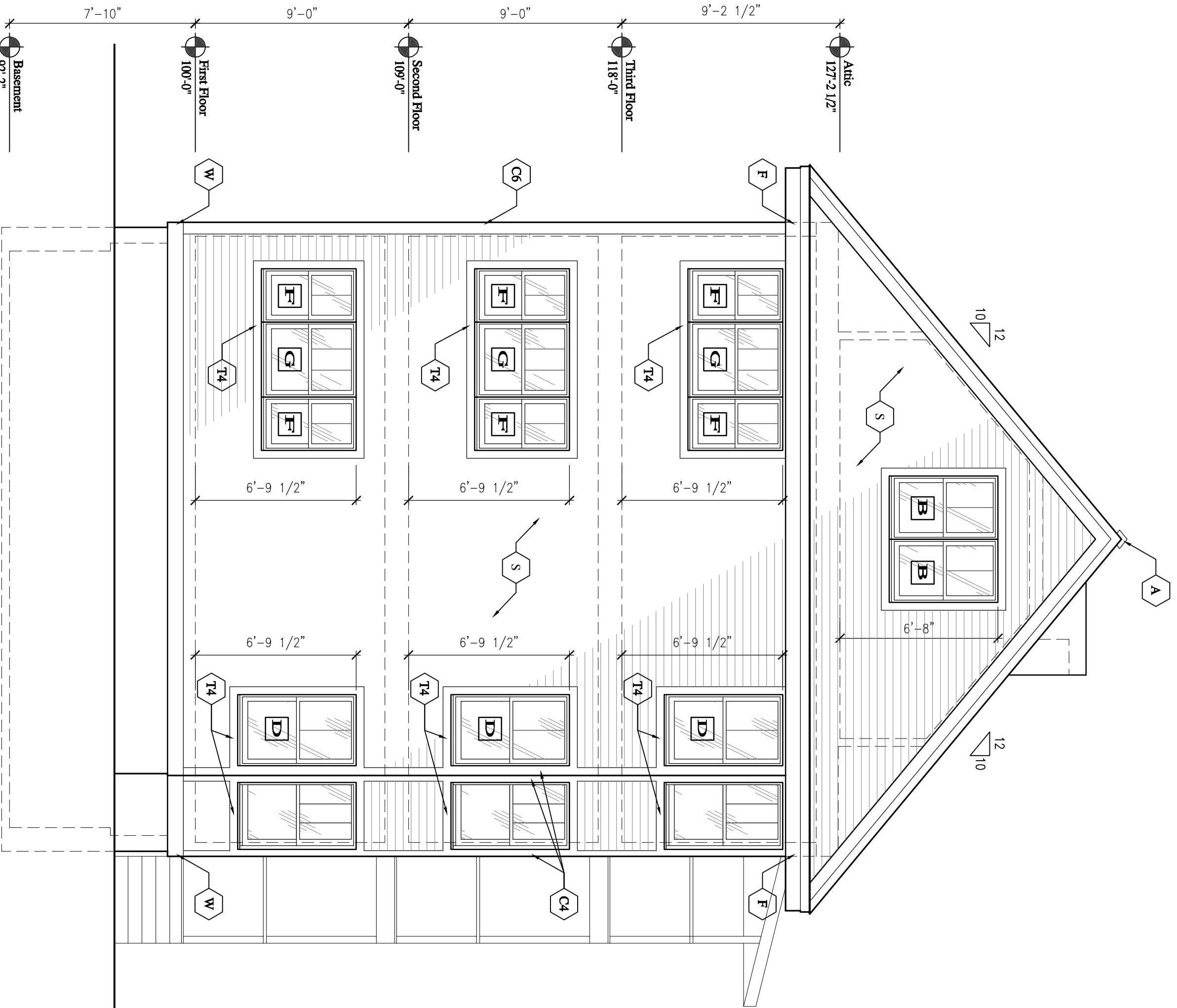
ISSUE DATE
PRELIM. 08-25-11
PROJCD Not Rec'd
CDs 10-12-11
REV. 1 -
REV. 2 -
PRINT 10-12-11

EXTERIOR
 ELEVATIONS

A2.1



PARKING LOT ELEVATION
 SCALE: 1/4" = 1'-0"



WALTON ST. ELEVATION
 SCALE: 1/4" = 1'-0"

WINDOW SCHEDULE 15 Walton Street Portland 10-7-11

Qty.	No.	Size	Type	Grille Pattern	Screen	Remarks
A	2	2'-8" x 4'-7" V/HF	Casement	2 over 1	Y	EGRESS: Wide Center Rail
B	2	2'-8" x 4'-7" V/HF	Double Hung	2 over 1	Y	Match Existing
C	3	3'-9" x 5'-2" V/HF	Double Hung	3 over 1	Y	Tempered Glass
D	3	4'-7" x 5'-7" V/HF	Double Hung	3 over 1	Y	
E	4	2'-2" x 4'-3" V/HF	Double Hung	2 over 1	Y	Match G
F	2	2'-2" x 4'-3" V/HF	Double Hung	2 over 1	Y	Match G
G	3	3'-0" x 4'-3" V/HF	Double Hung	3 over 1	Y	Match G
H	1	1'-9" x 2'-10" V/HF	Double Hung	2 over 1	Y	Mill at street side
X			Existing Windows			Replica Screens as required. Clean and Lubr Tracks

Notes:
 Review AA Drawings prior to ordering
 Factory finish as indicated.
 Factory finish as indicated.
 Manufacturer to provide cut sheets for review and owner approval PRIOR to fabrication.

MATERIAL LEGEND:

- A BOLL SCREEN, ROOF AIR VENT w/ SHINGLE CAP, INSECT SCREEN & 3" THROAT MIN., TYP.
- C4 4" VINYL CORNER BOARDS, TYP.
- C6 6" VINYL CORNER BOARDS, TYP.
- D PREFINISHED BROWN ALUM. DHP EDGE, TYP.
- F 'AZEK' - 1x3 ON 1x10 FASCOA BOARDS, TYP. U.O.N
- R 35 YR CERTAINTED HATTAIUS ASPHALT ROOFING SHINGLES ON 3/8" FELT w/ ICE & WATER SHIELD @ LOWER 3'-0". TYP.
- S VINYL SIDING SYSTEM, TO MATCH EXIST. VINYL SIDING COLOR & EXPOSURE
- TR 2" VINYL WINDOW TRIM, TYP. U.O.N
- W 4" VINYL WINDOW TRIM
- 'AZEK' 1x8 WATER TABLE

PERMIT SET 10-12-11