



# Walton Street 3 Unit

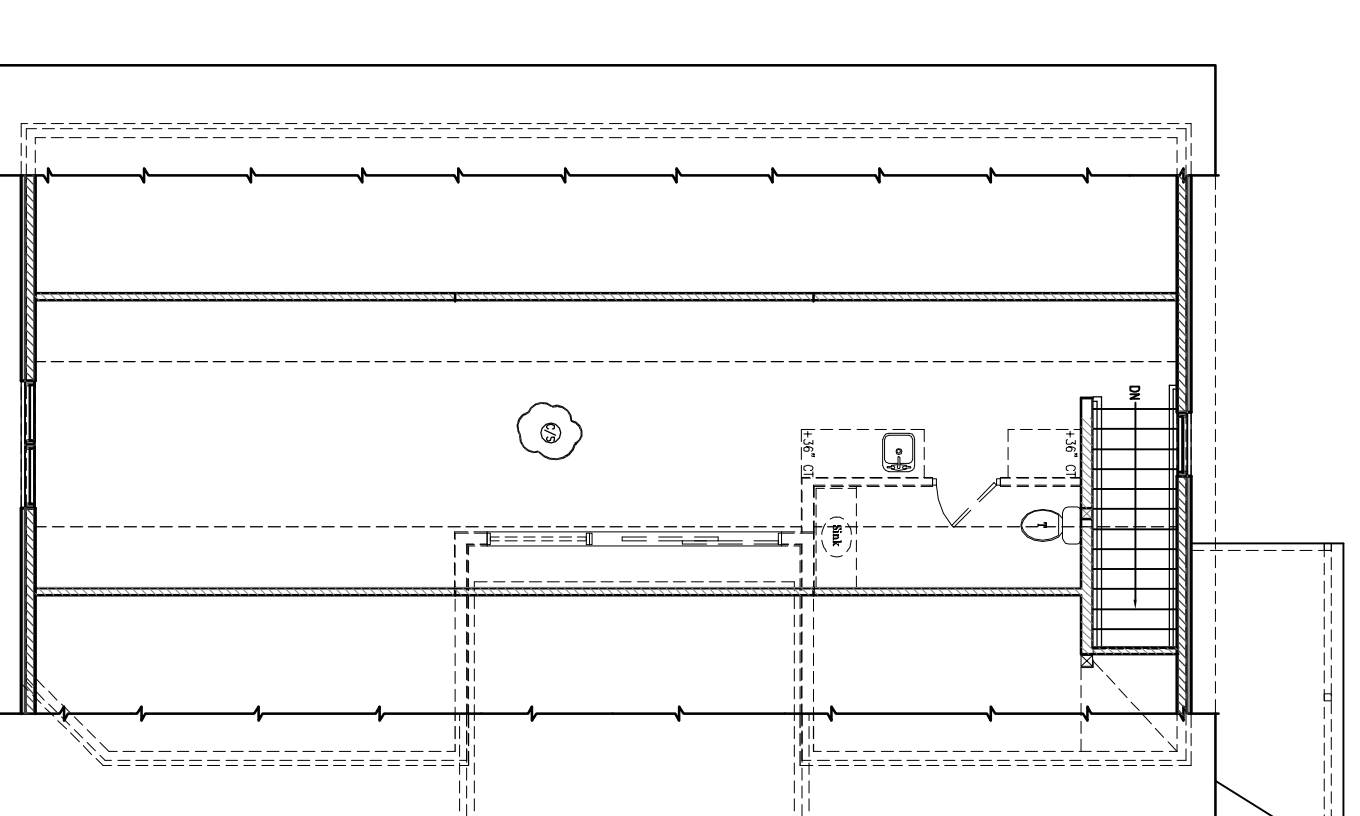
15 Walton Street  
Portland Maine 04103

JOB: 11024

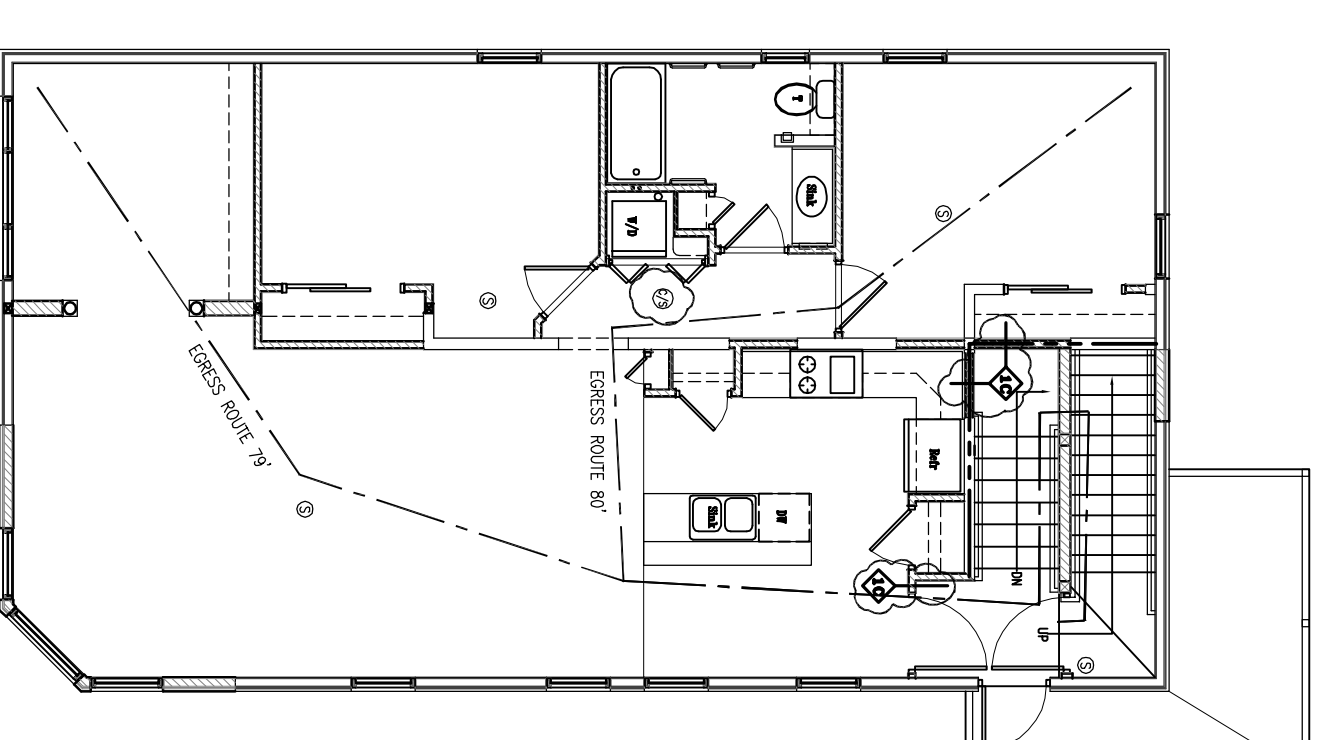
ISSUE DATE	
PRELIM.	08-25-11
Proposed	Not Rec'd
CD's	10-12-11
REV. 1	-
REV. 2	-
PRINT	11-04-11

BASEMENT, 1st,  
2nd, 3rd & 4th FLOOR  
LIFE SAFETY PLANS

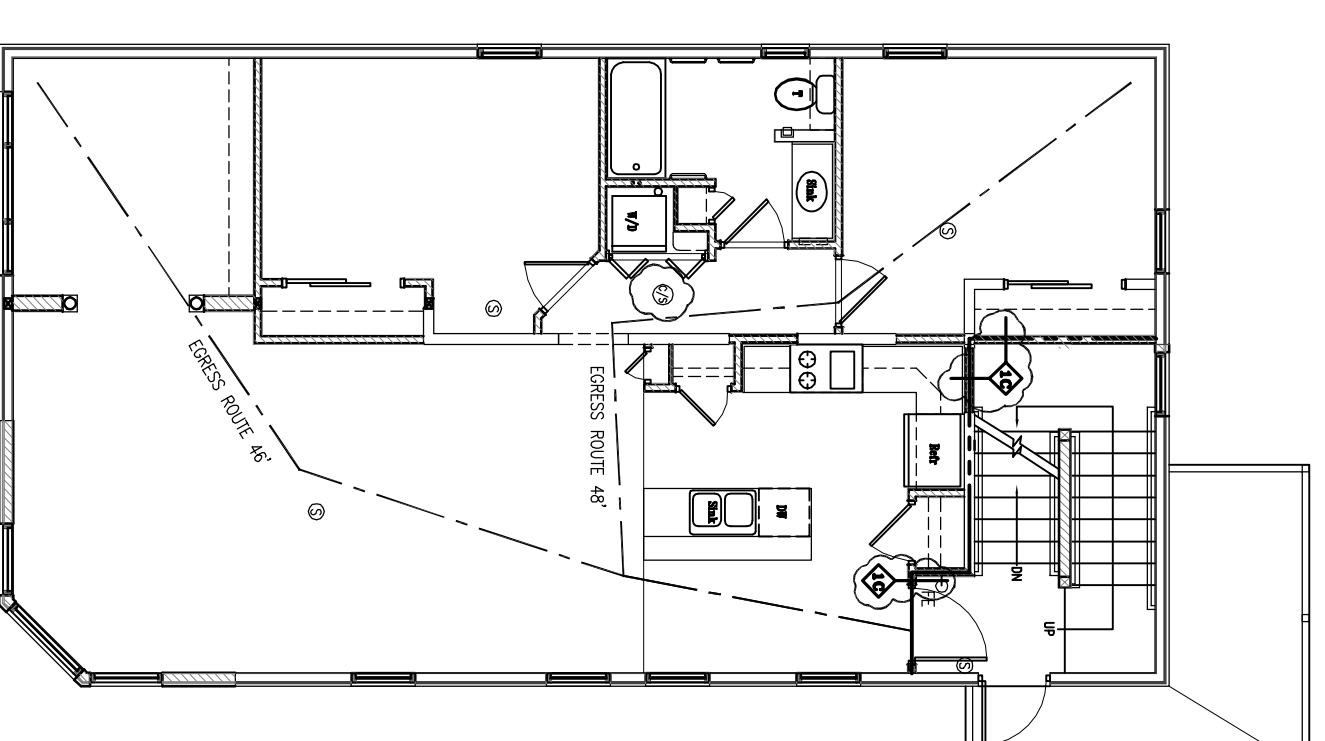
**LS1.0**



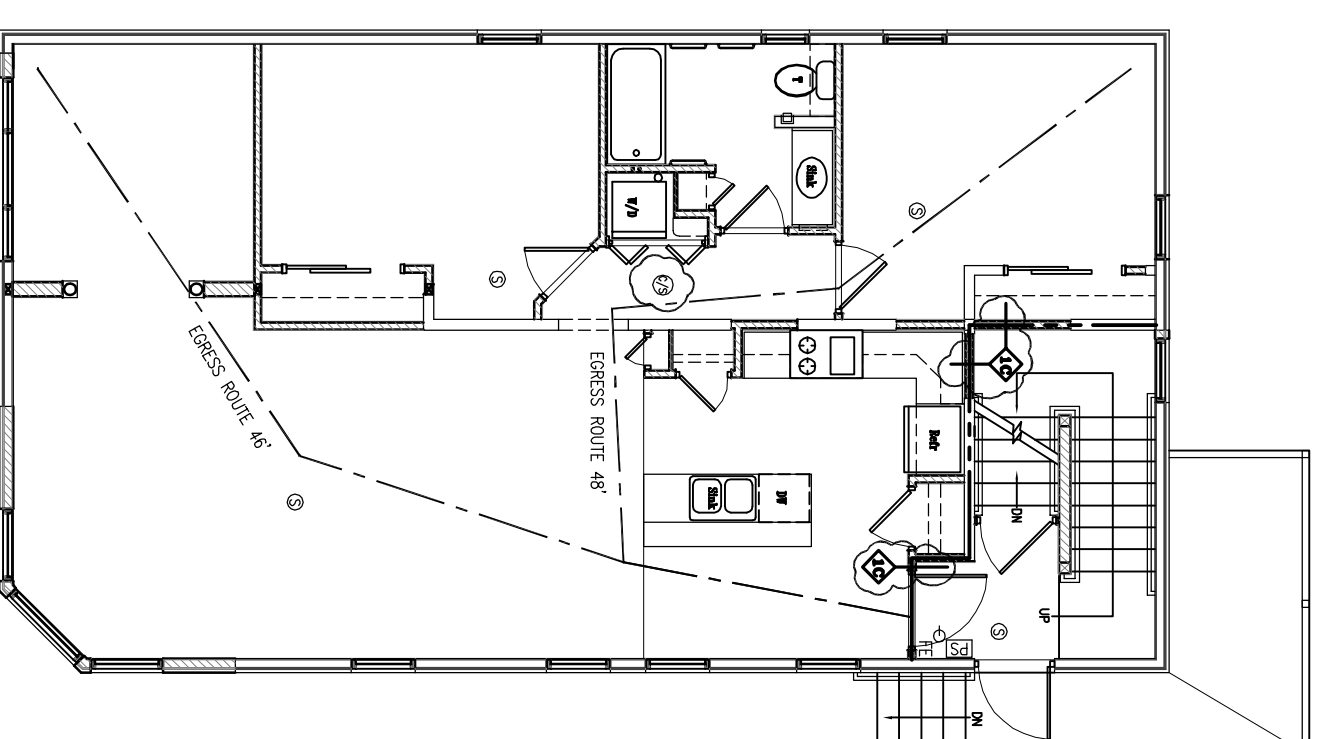
ATTIC LIFE SAFETY PLAN  
SCALE: 1/8" = 1'-0"



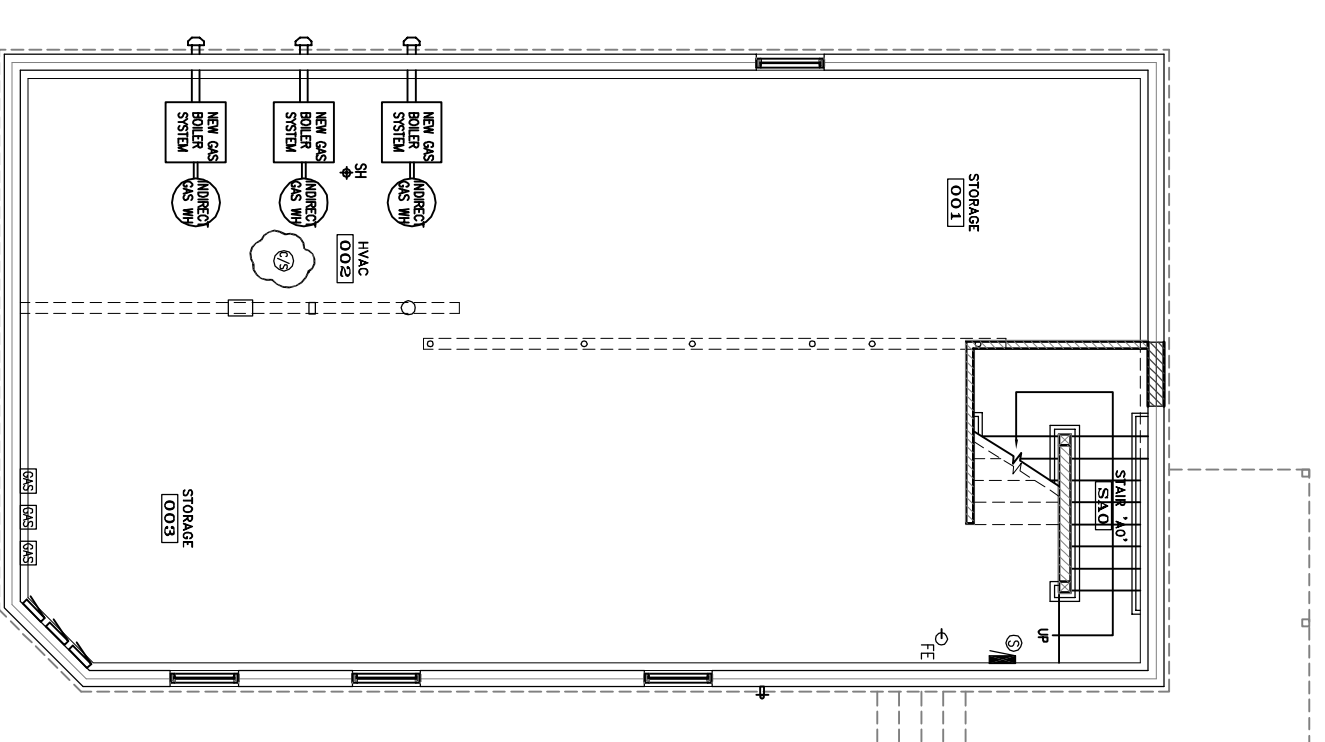
THIRD FLOOR LIFE SAFETY PLAN  
SCALE: 1/8" = 1'-0"



SECOND FLOOR LIFE SAFETY PLAN  
SCALE: 1/8" = 1'-0"



FIRST FLOOR LIFE SAFETY PLAN  
SCALE: 1/8" = 1'-0"



BASEMENT LIFE SAFETY PLAN  
SCALE: 1/8" = 1'-0"

**FIRE PROTECTION LEGEND**

- FIRE EXTINGUISHER 10# ABC
- EXIT LIGHT
- STROBE ONLY WITH CANDELLA RATING AS NOTED
- HORN STROBE WITH CANDELLA RATING AS NOTED
- DUAL EMERGENCY LIGHT
- SMOKE / CARBON MONOXIDE DETECTOR (CEILING)
- HEAT DETECTOR (CEILING)
- COMBINATION LIGHT/EXHAUST FAN
- FIRE ALARM MASTER CONTROL PANEL
- PULL STATION
- EXTERIOR EGRESS LIGHT
- NOT AN EXIT SIGN W/ RAISED BRAILLE
- VAN ACCESSIBLE

NOTE:  
SMOKE DETECTORS TO BE INTERCONNECTED w/ BATTERY BACK-UP

**ABBREVIATIONS:**

CO	=	CASED OPENING
CL	=	CLASH
CD	=	DOOR CLOSER
CH	=	HINGES
WS	=	WEATHER STRIPPING SYSTEM
DB	=	DEAD BOLT
L	=	ADA LEVER
BBC	=	BALL BEARING CENTER HINGE
SF	=	STEEL FRAME
ST	=	STEEL TRIM
F	=	ESSENTIAL FLOOR FINISH
N	=	NEW

**LIFE SAFETY NOTES:**

1. PROVIDE INTERCONNECTED SMOKE DETECTOR SYSTEM TO BE HARDWIRED w/ BATTERY BACK-UP.

AMENDED PERMIT SET 11-15-11