

17 CHESTNUT STREET  
 PORTLAND, ME 04101  
 PHONE: 207.761.9500  
 FAX: 207.761.9595  
 design@alpharchitects.com

**© COPYRIGHT**  
 Release or reproduction of the contents of  
 this document is not permitted without  
 written permission of ALPHA ARCHITECTS



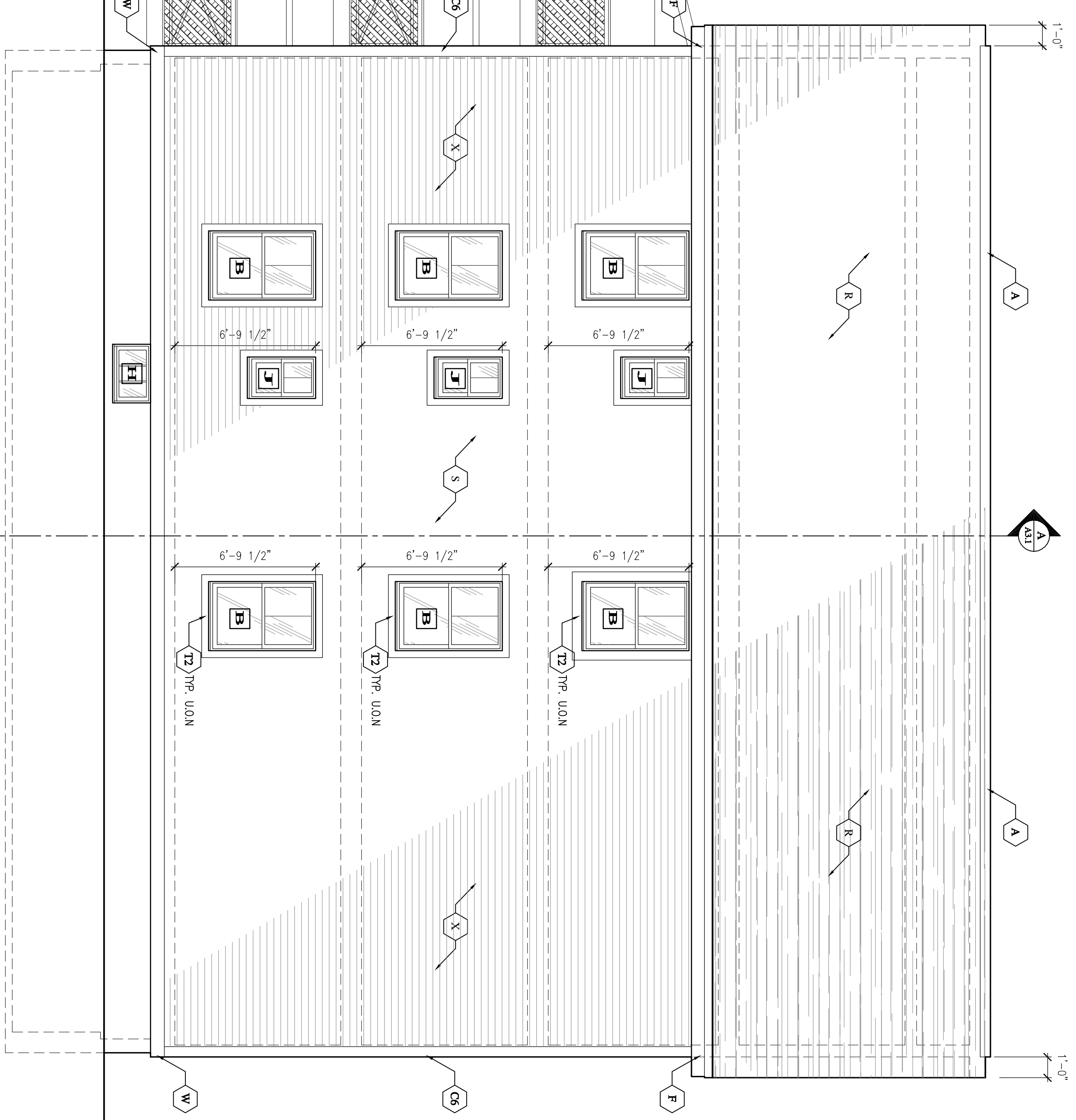
# Walton Street 3 Unit

15 Walton Street  
 Portland Maine 04103

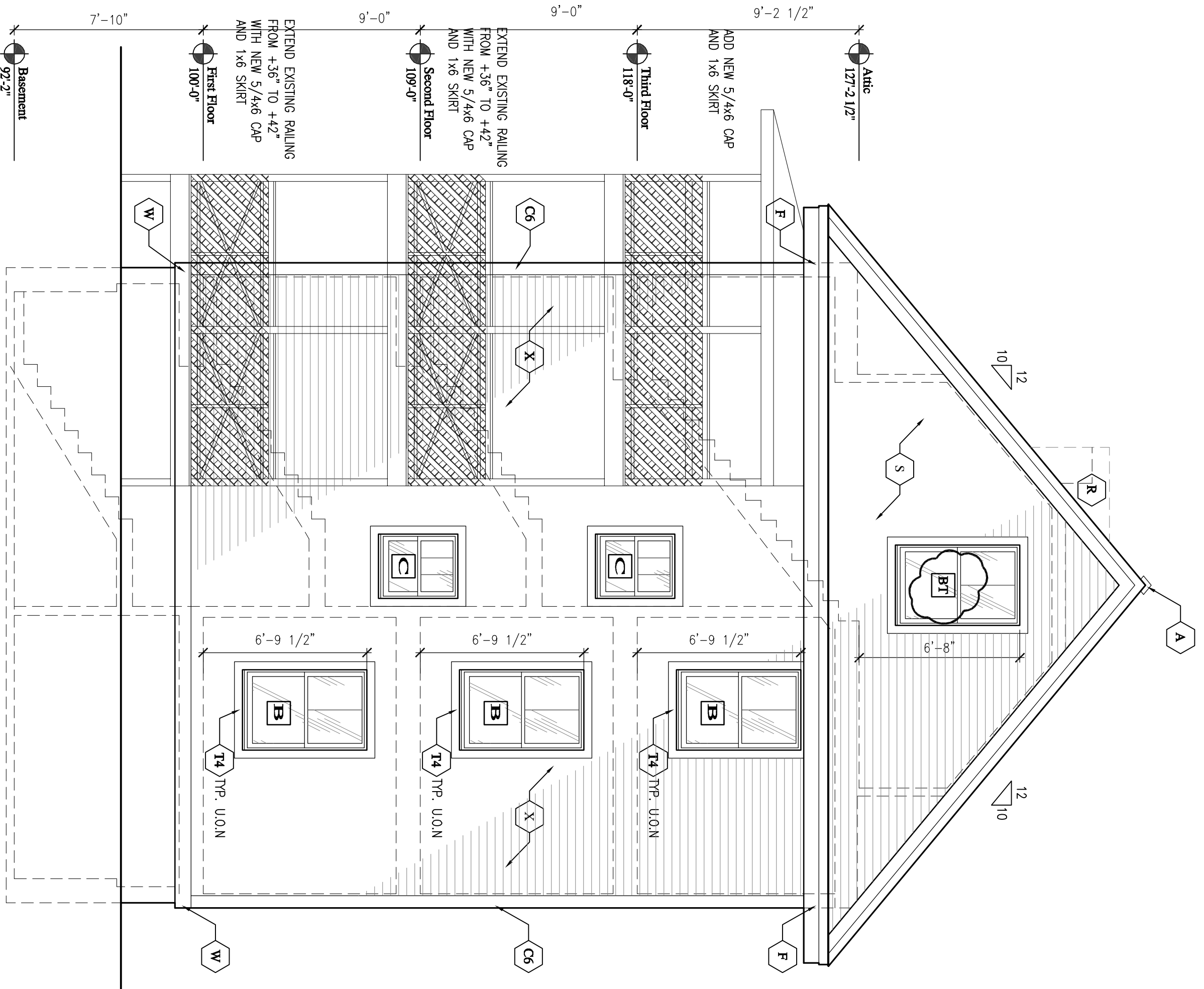
JOB: 11024

ISSUE DATE	DESCRIPTION
PRELIM. 08-25-11	
Revised 10-12-11	Not Rec'd
REV. 1	-
REV. 2	-
PRINT	11-04-11

EXTERIOR  
 ELEVATIONS  
**A2.2**



**SIDE ELEVATION**  
 SCALE: 1/4" = 1'-0"



**REAR ELEVATION**  
 SCALE: 1/4" = 1'-0"

**MATERIAL LEGEND:**

- A 1/2" ROLL SCREEN, ROUGE AIR VENT w/ SHINGLE CAP, INSECT SCREEN & 3" THROUGH WALL, TYP.
- C4 4" VINYL CORNER BOARDS, TYP.
- C5 6" VINYL CORNER BOARDS, TYP.
- D PREFINISHED BROWN ALUM. DRIP EDGE, TYP.
- F 1/2"X1/2" - 1X3 ON 1X10 FASOM BOARDS, TYP. U/LON
- R 35 YR GUARANTEED MATRIX ASPHALT ROOFING SHINGLES ON 1/2" FIBER W/ ICE & WATER SHIELD @ LOWER 3'-0", TYP.
- S VINYL SIDING SYSTEM, TO MATCH EXIST. VINYL SIDING COLOR & EXPOSURE
- P WHITE VERTICAL BEADED PROFILE PANEL
- T4 ALSIDE 3 1/2" LINEL
- T5 1/2"X1/2" 1X8 WATER TABLE
- X EXISTING VINYL SIDING TO REMAIN

**WINDOW SCHEDULE 18 Walton Street Portland 11/15/2011**

Qty.	No.	Size	Type	Grille Pattern	Screen	Remarks
23	A	3'-4" x 5'-2" RC VIF	Double Hung	2 over 1	Y	21
3	C	2'-8" x 3'-2" VIF	Double Hung	3 over 1	Y	Excess
6	D	3'-0" x 5'-2" VIF	Double Hung	2 over 1	Y	Tempered Glass
3	E	4'-0" x 5'-2" VIF	Double Hung	3 over 1	Y	
3	F	2'-2" x 4'-0" VIF	Double Hung	2 over 1	Y	Mull to G
6	G	3'-0" x 4'-0" VIF	Double Hung	3 over 1	Y	Mull to F
4	H	1'-0" x 2'-10" VIF	Double Hung	3 Lite	Y	Mull at street side
3	J	2'-0" x 3'-6" VIF	Hopper	2 over 1	Y	Tempered Glass
1	BT	3'-4" x 5'-2" RC VIF	Double Hung	2 over 1	Y	

**Notes**  
 Review All Drawings prior to ordering  
 Field Verify where shown as required.  
 Manufacturer to provide cut sheets for review and owner approval PRIOR to fabrication

AMENDED PERMIT SET 11-15-11