



## Walton Street 3 Unit

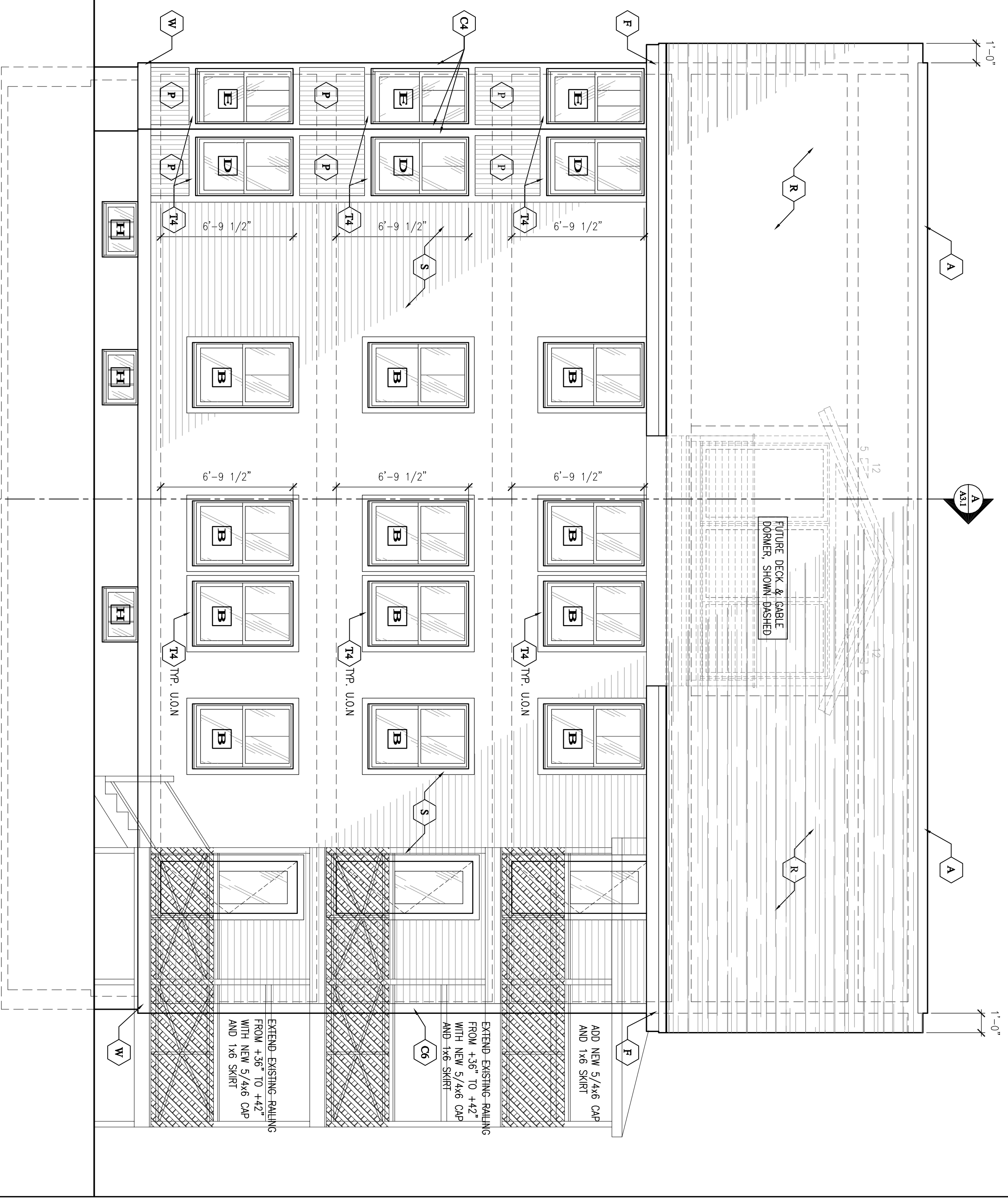
15 Walton Street  
Portland Maine 04103

JOB: 11024

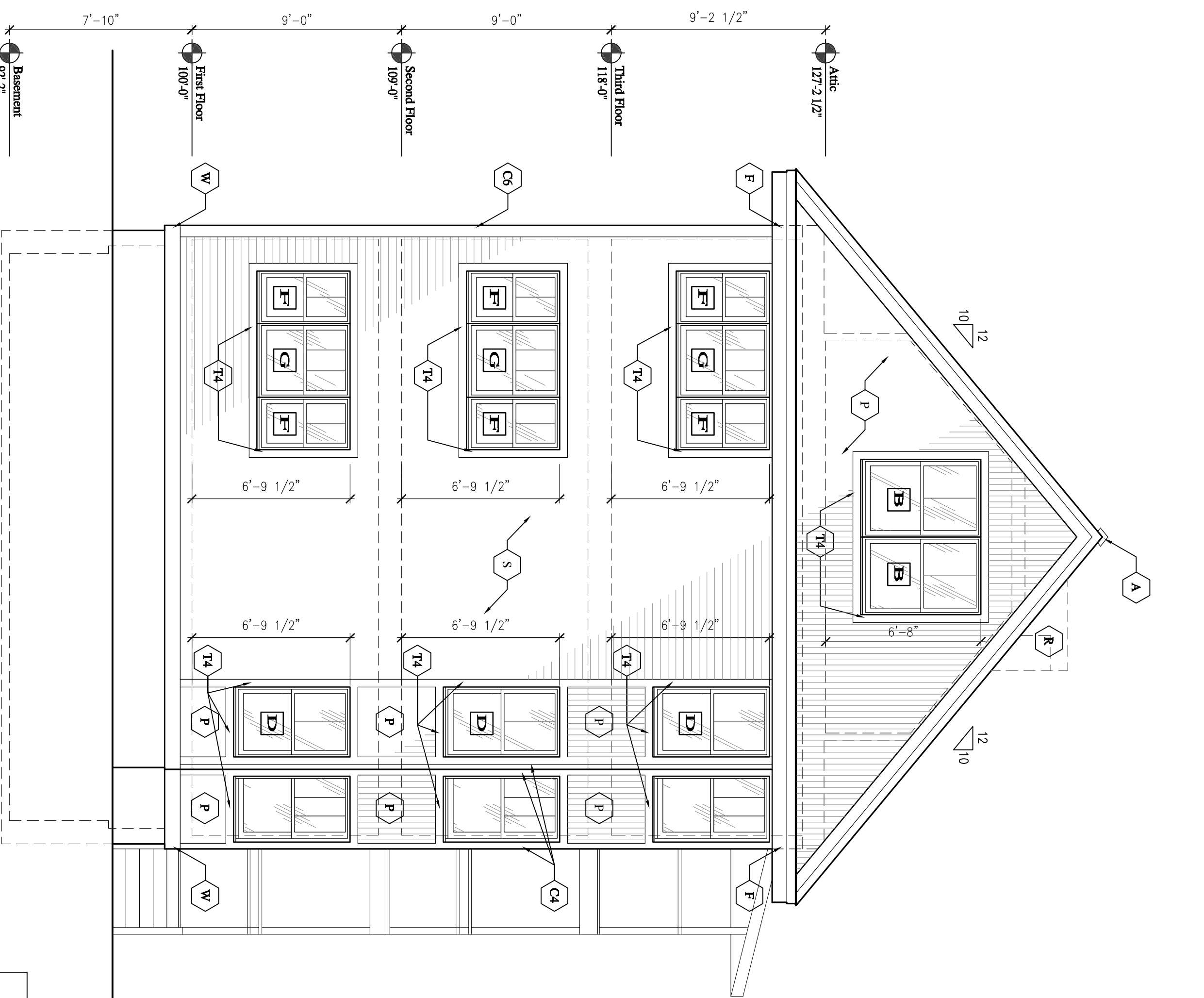
ISSUE DATE	DESCRIPTION
PRELIM. 08-25-11	
PROCD	Not Rec'd
CDs	10-12-11
REV. 1	-
REV. 2	-
PRINT	11-04-11

EXTERIOR  
ELEVATIONS

# A2.1



**PARKING LOT ELEVATION**  
SCALE: 1/4" = 1'-0"



**WALTON ST. ELEVATION**  
SCALE: 1/4" = 1'-0"

WINDOW SCHEDULE 15 Walton Street Portland 11/19/2011

QTY.	No.	Size	Type	Grille Pattern	Screen	Remarks
-	A	not used				
23	B	3'-4" x 3'-2" RO VIF	Double Hing	2 over 1	Y	21
2	C	3'-0" x 3'-2" RO VIF	Double Hing	2 over 1	Y	Tempered Glass
2	D	4'-0" x 3'-2" VIF	Double Hing	2 over 1	Y	
3	E	4'-0" x 3'-2" VIF	Double Hing	3 over 1	Y	
6	F	2'-2" x 4'-0" VIF	Double Hing	2 over 1	Y	Mail to G
3	G	3'-0" x 4'-0" VIF	Double Hing	3 over 1	Y	Mail to F
4	H	1'-9" x 2'-10" VIF	Hopper	3 Lite	Y	Mail at street side
3	J	2'-0" x 3'-6" VIF	Double Hing	2 over 1	Y	
1	BT	3'-4" x 5'-2" RO VIF	Double Hing	2 over 1	Y	Tempered Glass

**NOTES**

Review AA Drawings prior to ordering  
Field Verify where shown as required.  
Manufacturer to provide cut sheets for review and owner approval PRIOR to fabrication.

**MATERIAL LEGEND:**

- A** ROLL SCREEN, ROOF AIR VENT w/ SHINGLE CAP, INSECT SCREEN & 3" THROAT MIN., TYP.
- C4** 4" VINYL CORNER BOARDS, TYP.
- C6** 6" VINYL CORNER BOARDS, TYP.
- D** PREPRESSED BROWN ALUM. DRIP EDGE, TYP.
- F** 1/2" x 1-1/2" ON 1x10 FASCIA BOARDS, TYP. U/ON
- R** 35 YR GERRANTEED MANTARUS ASPHALT ROOFING SHINGLES ON 3/8" FELT w/ ICE & WATER SHIELD @ LOWNER 3'-0", TYP.
- S** VINYL SIDING SYSTEM, TO MATCH EXIST. VINYL SIDING COLOR & EXPOSURE
- P** WHITE VERTICAL BEADED PROFILE PANEL
- T4** ALSIDE 3 1/2" LINEAL
- W** 1/2" x 1-1/2" WATER TABLE
- X** EXISTING VINYL SIDING TO REMAIN

AMENDED PERMIT SET 11-15-11