

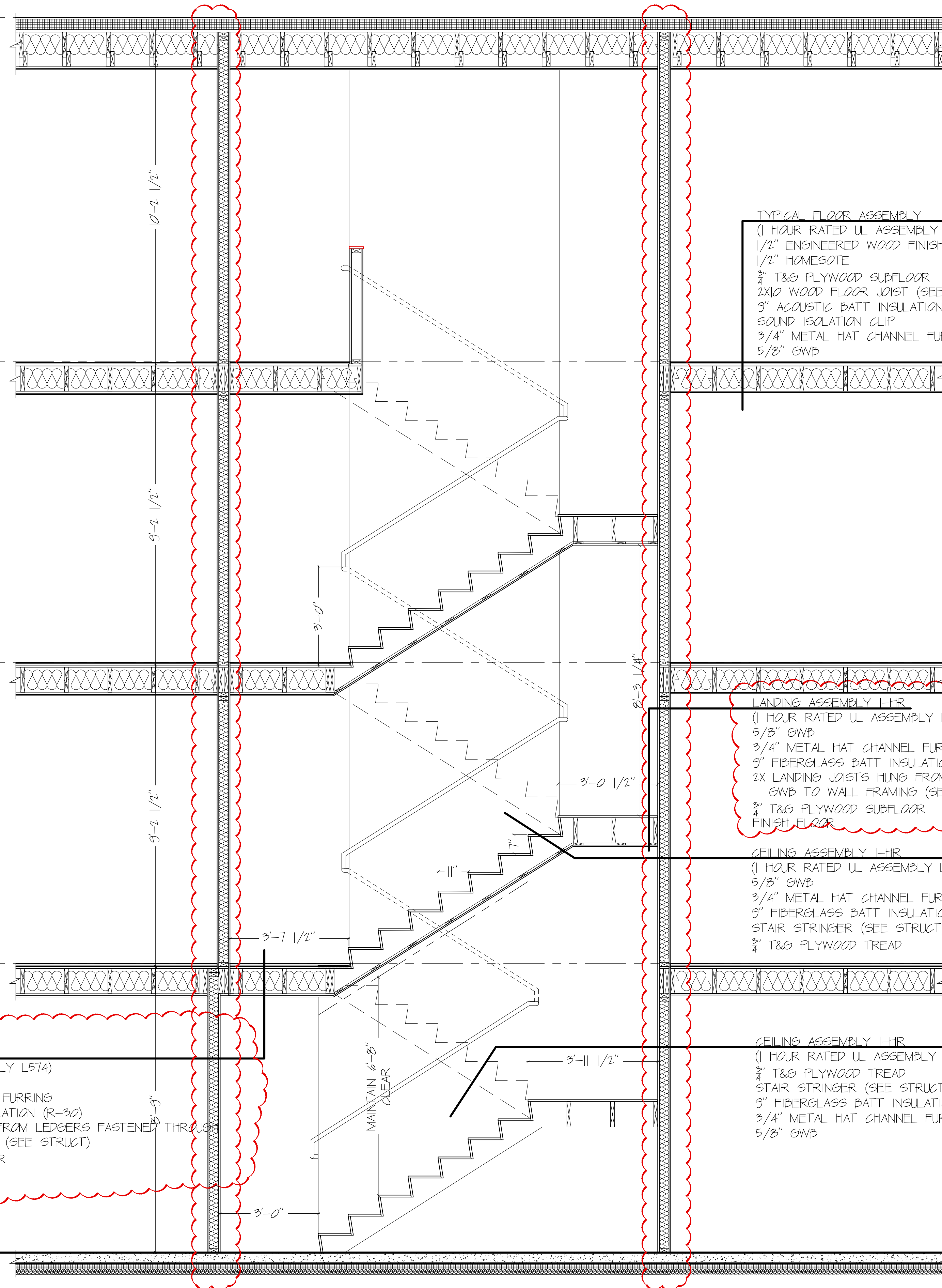
128'-11 1/8"
T.O. PARAPET

118'-5"
FFE THIRD

109'-2 1/2"
FFE SECOND

100'-0"
FFE FIRST

91'-2"
FFE BASEMENT



TYPICAL FLOOR ASSEMBLY
 (1 HOUR RATED UL ASSEMBLY L574)
 1/2" ENGINEERED WOOD FINISH FLOOR
 1/2" HOMESOTE
 3/4" T&G PLYWOOD SUBFLOOR
 2X10 WOOD FLOOR JOIST (SEE STRUCT)
 9" ACOUSTIC BATT INSULATION
 SOUND ISOLATION CLIP
 3/4" METAL HAT CHANNEL FURRING
 5/8" GWB

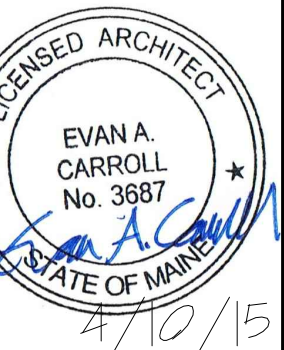
LANDING ASSEMBLY 1-HR
 (1 HOUR RATED UL ASSEMBLY L574)
 5/8" GWB
 3/4" METAL HAT CHANNEL FURRING
 9" FIBERGLASS BATT INSULATION (R-30)
 2X LANDING JOISTS HUNG FROM LEDGERS FASTENED THROUGH
 GWB TO WALL FRAMING (SEE STRUCT)
 3/4" T&G PLYWOOD SUBFLOOR
 FINISH FLOOR

CEILING ASSEMBLY 1-HR
 (1 HOUR RATED UL ASSEMBLY L574)
 5/8" GWB
 3/4" METAL HAT CHANNEL FURRING
 9" FIBERGLASS BATT INSULATION (R-30)
 STAIR STRINGER (SEE STRUCT)
 3/4" T&G PLYWOOD TREAD

LANDING ASSEMBLY 1-HR
 (1 HOUR RATED UL ASSEMBLY L574)
 5/8" GWB
 3/4" METAL HAT CHANNEL FURRING
 9" FIBERGLASS BATT INSULATION (R-30)
 2X LANDING JOISTS HUNG FROM LEDGERS FASTENED THROUGH
 GWB TO WALL FRAMING (SEE STRUCT)
 3/4" T&G PLYWOOD SUBFLOOR
 FINISH FLOOR

CEILING ASSEMBLY 1-HR
 (1 HOUR RATED UL ASSEMBLY L574)
 3/4" T&G PLYWOOD TREAD
 STAIR STRINGER (SEE STRUCT)
 9" FIBERGLASS BATT INSULATION (R-30)
 3/4" METAL HAT CHANNEL FURRING
 5/8" GWB

10 STAIR SECTION
 0 2'-0" SCALE: 1/2" = 1'-0"



PROJECT NO.
15002
 PROJECT NAME
WALTON STREET
 PORTLAND, ME

REVISIONS

1	6/18/2015	
2		
3		
4		
5		

CONSTRUCTION SET

DRAWN BY
EAC
 SHEET TITLE
STAIR SECTION

ISSUE DATE
4/10/15
 SHEET SCALE
1/4" = 1'-0"

A

3.1