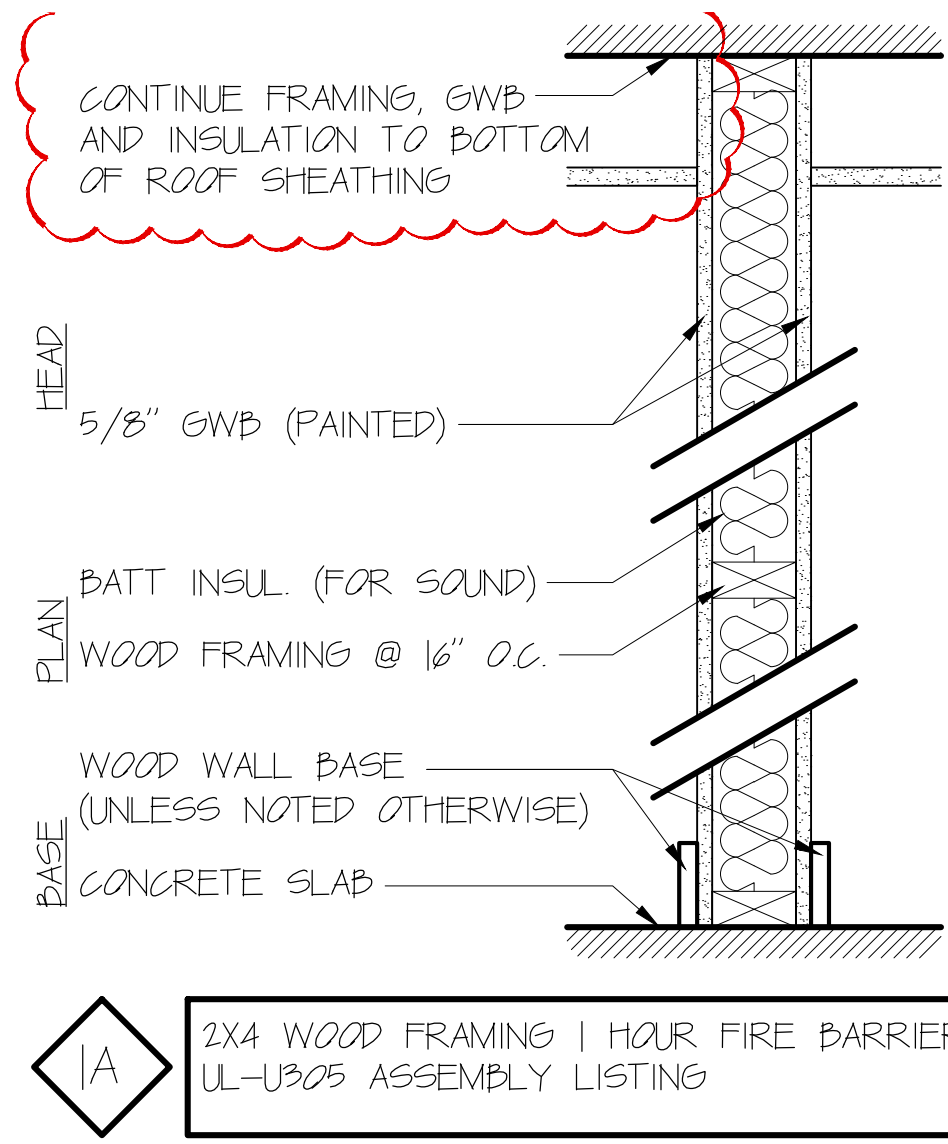


KEY	
	EMERGENCY LIGHTING
	SMOKE DETECTOR
	EXIT DISCHARGE



TYPICAL FLOOR ASSEMBLY
(1 HOUR RATED UL ASSEMBLY L574)
1/2" ENGINEERED WOOD FINISH FLOOR
1/2" HOMESOTE
3/4" T&G PLYWOOD SUBFLOOR
2X10 WOOD FLOOR JOIST (SEE STRUCT)
9" ACOUSTIC BATT INSULATION
SOUND ISOLATION CLIP
3/4" METAL HAT CHANNEL FURRING
5/8" GWB

