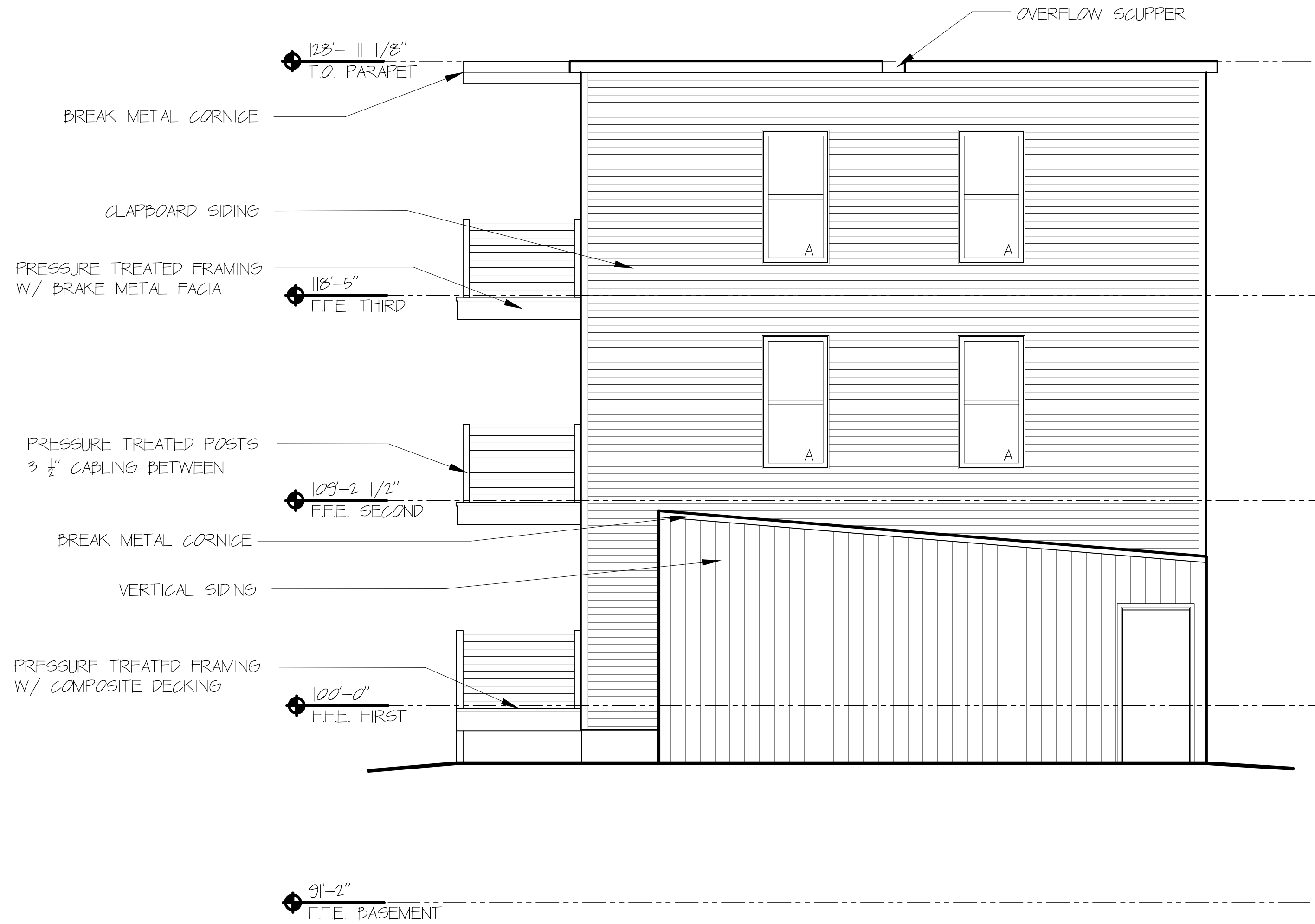
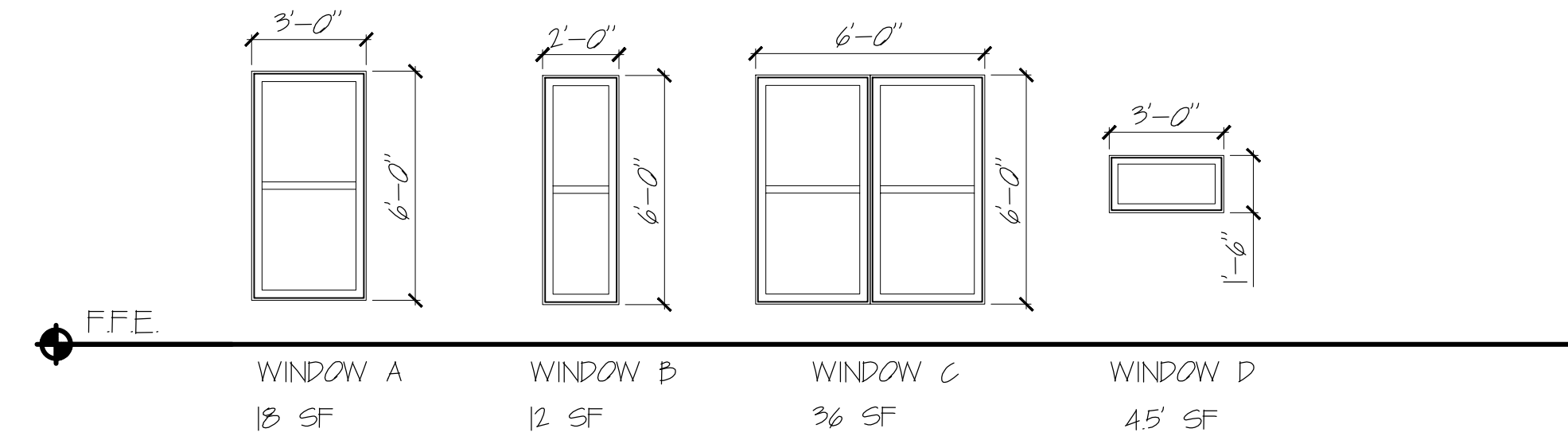


| WINDOW SCHEDULE | | | |
|-----------------|----------------------|------------|-----------|
| TYPE | SIZE (ROUGH OPENING) | MATERIAL | OPERATION |
| A | 3'-0" X 6'-0" | FIBERGLASS | CASEMENT |
| B | 2'-0" X 6'-0" | FIBERGLASS | CASEMENT |
| C | 6'-0" X 6'-0" | FIBERGLASS | CASEMENT |
| D | 3'-0" X 1'-6" | FIBERGLASS | AWNING |

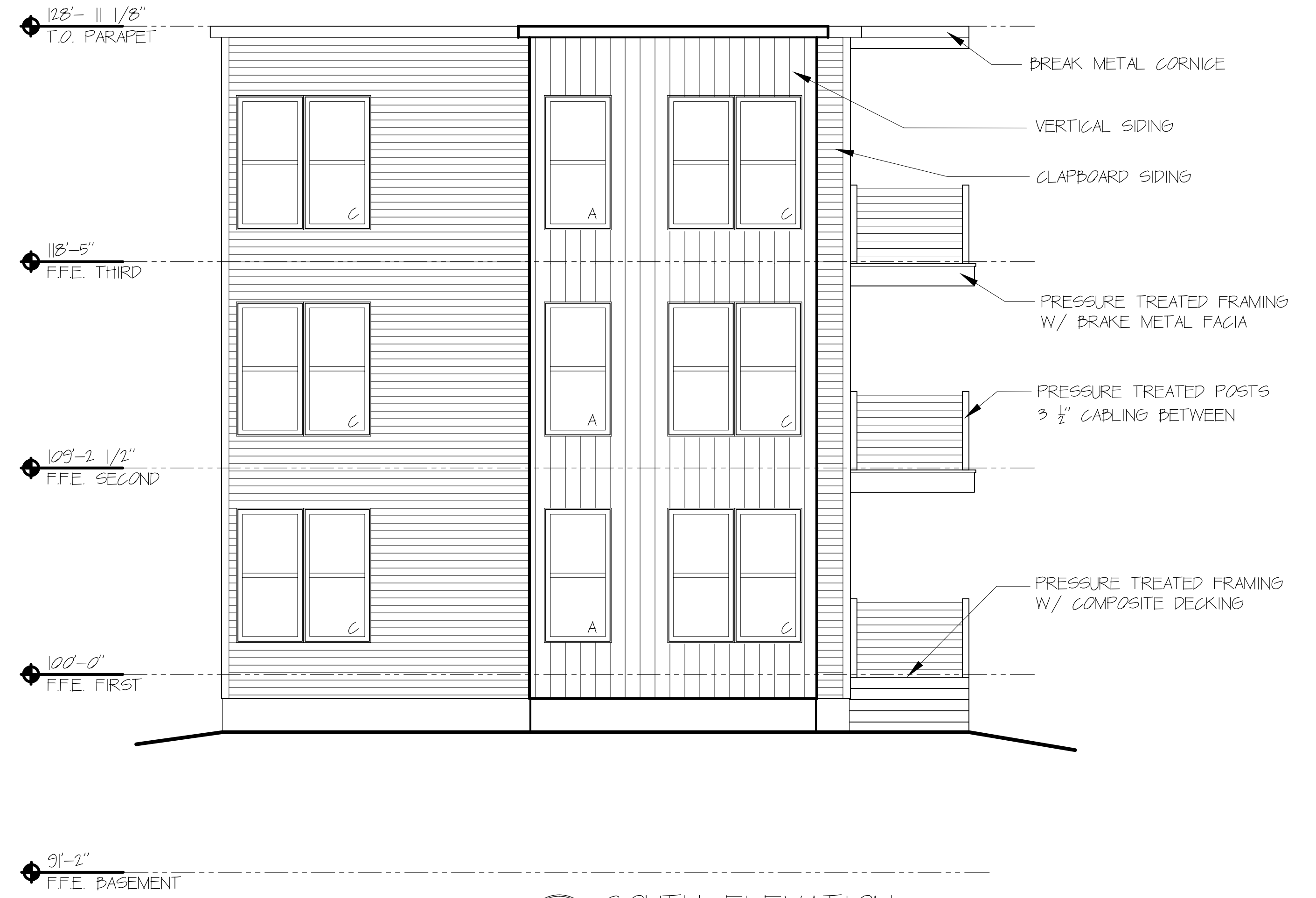
WINDOW SCHEDULE NOTES:
 1. SAFETY GLAZING MAY BE REQUIRED FOR WINDOWS NEAR A SWINGING DOOR
 2. ALL WINDOWS TO HAVE A MAXIMUM U-FACTOR OF 0.35

WINDOW SPECIFICATIONS:

| | |
|---------------------------------------|--|
| 1. Size and window configuration. | See Window Schedule |
| 2. Color options. | Black or Dark Gray exterior & White interior |
| 3. Factory Mulling Capability. | Preferred |
| 4. Design Pressure Rating | 25 |
| 5. U Factor | 0.35 or lower |
| 6. Material | Fiberglass or Vinyl exterior |
| 7. Glazing Type | Double Glazing |
| 8. Hardware type. | White |
| 9. Exterior Washing Capability | Washing from interior preferred |
| 10. Warranty (Window & glazing units) | 10 years |
| 11. Insect Screens | Standard Insect Screens |



20 NORTH ELEVATION
 SCALE: 1/4" = 1'-0"



10 SOUTH ELEVATION
 SCALE: 1/4" = 1'-0"