

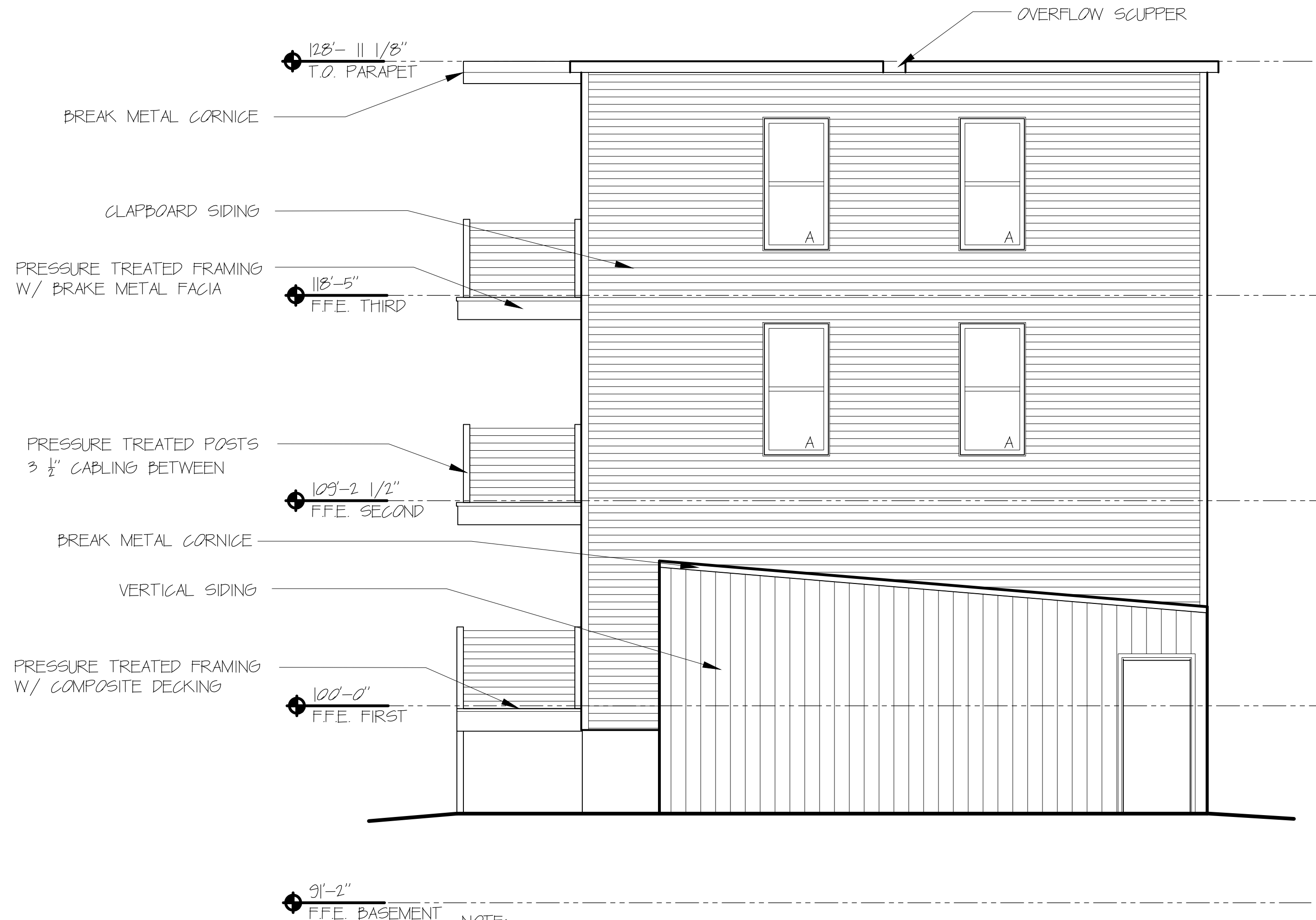
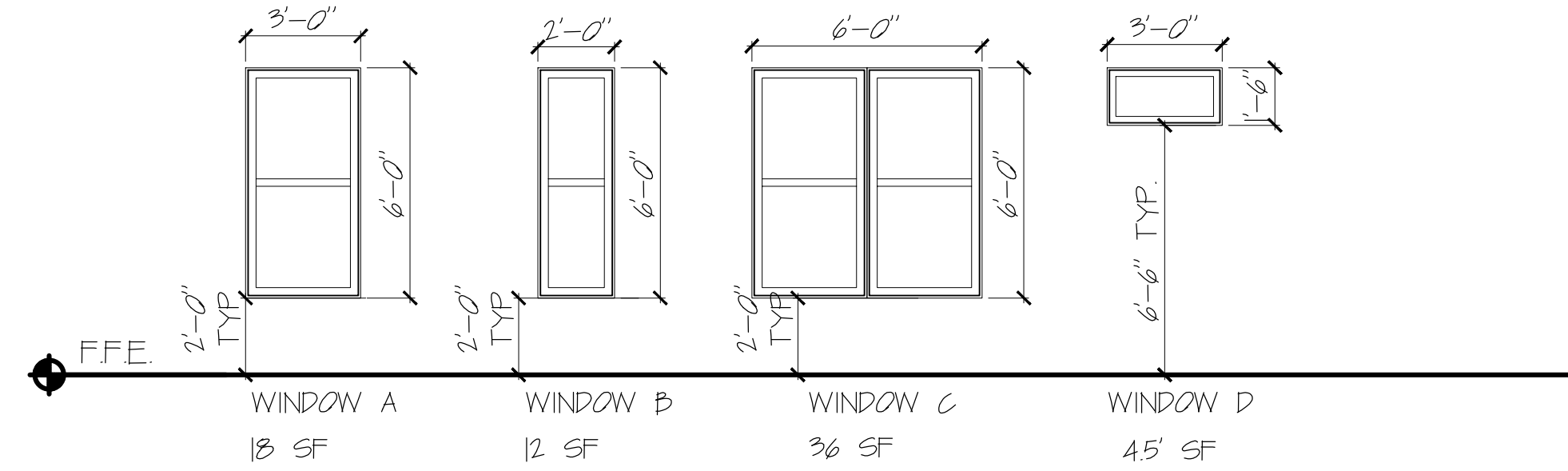
WINDOW SCHEDULE			
TYPE	SIZE (ROUGH OPENING)	MATERIAL	OPERATION
A	3'-0" X 6'-0"	FIBERGLASS	CASEMENT
B	2'-0" X 6'-0"	FIBERGLASS	CASEMENT
C	6'-0" X 6'-0"	FIBERGLASS	CASEMENT
D	3'-0" X 1'-6"	FIBERGLASS	AWNING

WINDOW SCHEDULE NOTES:

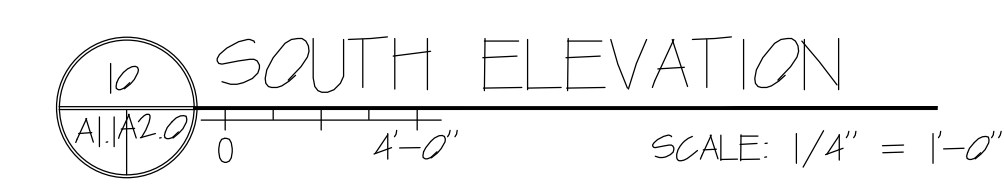
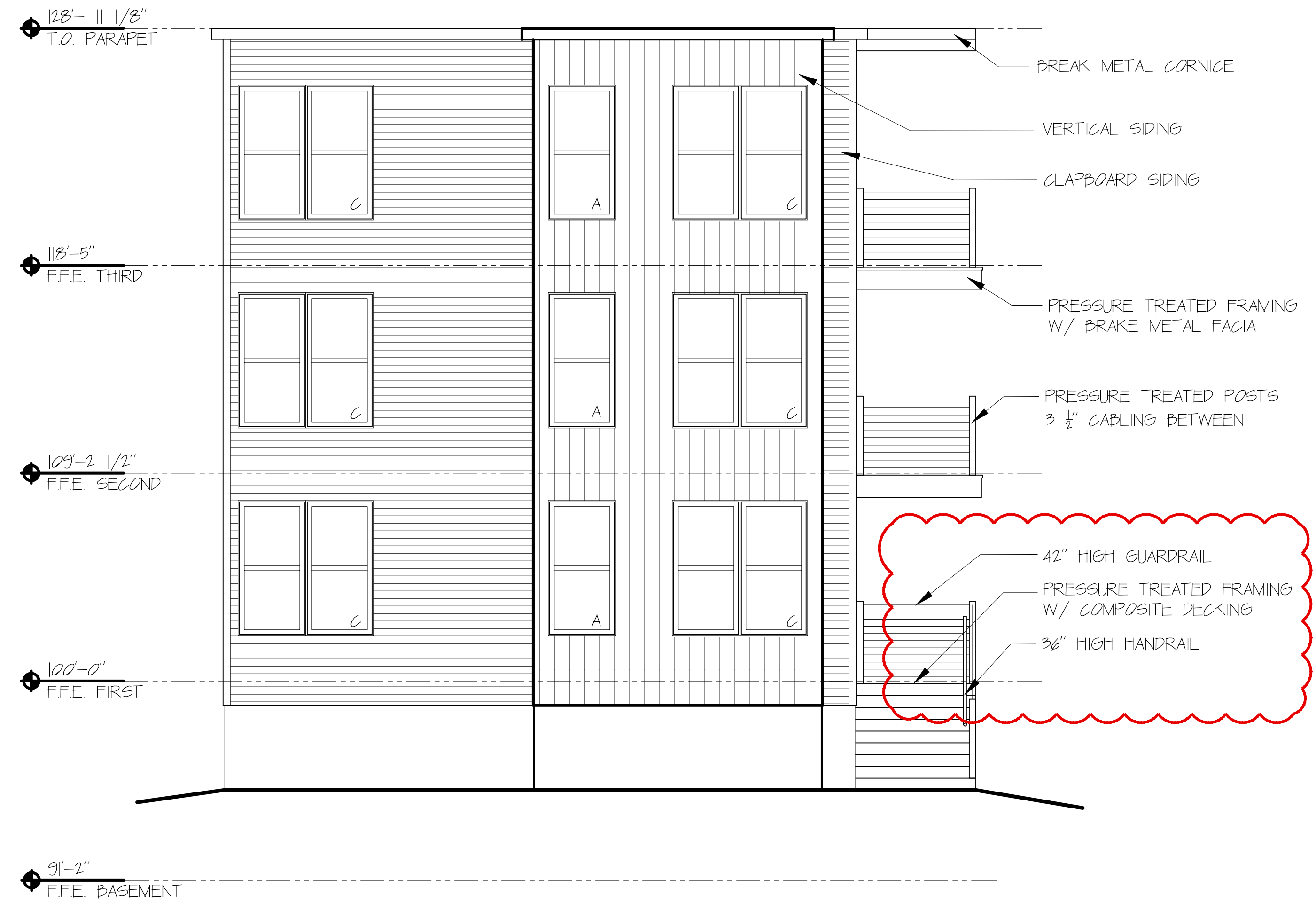
- SAFETY GLAZING MAY BE REQUIRED FOR WINDOWS NEAR A SWINGING DOOR
- ALL WINDOWS TO HAVE A MAXIMUM U-FACTOR OF 0.35
- WINDOWS LABELED "EGRESS WINDOW" IN PLAN MUST COMPLY WITH:
 - MIN AREA: 5.75 SF
 - MIN HEIGHT: 24"
 - MIN WIDTH: 20"

WINDOW SPECIFICATIONS:

- Size and window configuration. See Window Schedule
- Color options. Black or Dark Gray exterior & White interior
- Factory Mulling Capability. Preferred
- Design Pressure Rating. 25
- U Factor. 0.35 or lower
- Material. Fiberglass or Vinyl exterior
- Glazing Type. Double Glazing
- Hardware type. White
- Exterior Washing Capability. Washing from interior preferred
- Warranty (Window & glazing units). 10 years
- Insect Screens. Standard Insect Screens



NOTE:
- GLAZING IN ALL DOORS IS REQUIRED TO BE SAFETY GLAZING



4/10/15

PROJECT NO. 15002
PROJECT NAME
WALTON STREET
PORTLAND, ME

REVISIONS	DATE
1	6/18/2015
2	6/25/2015
3	9/3/2015
4	9/25/2015
5	

CONSTRUCTION SET

DRAWN BY
EAC

ISSUE DATE
4/10/15
SHEET SCALE
1/4" = 1'-0"

A

2.0

ELEVATIONS