



Walton Street 3 Unit

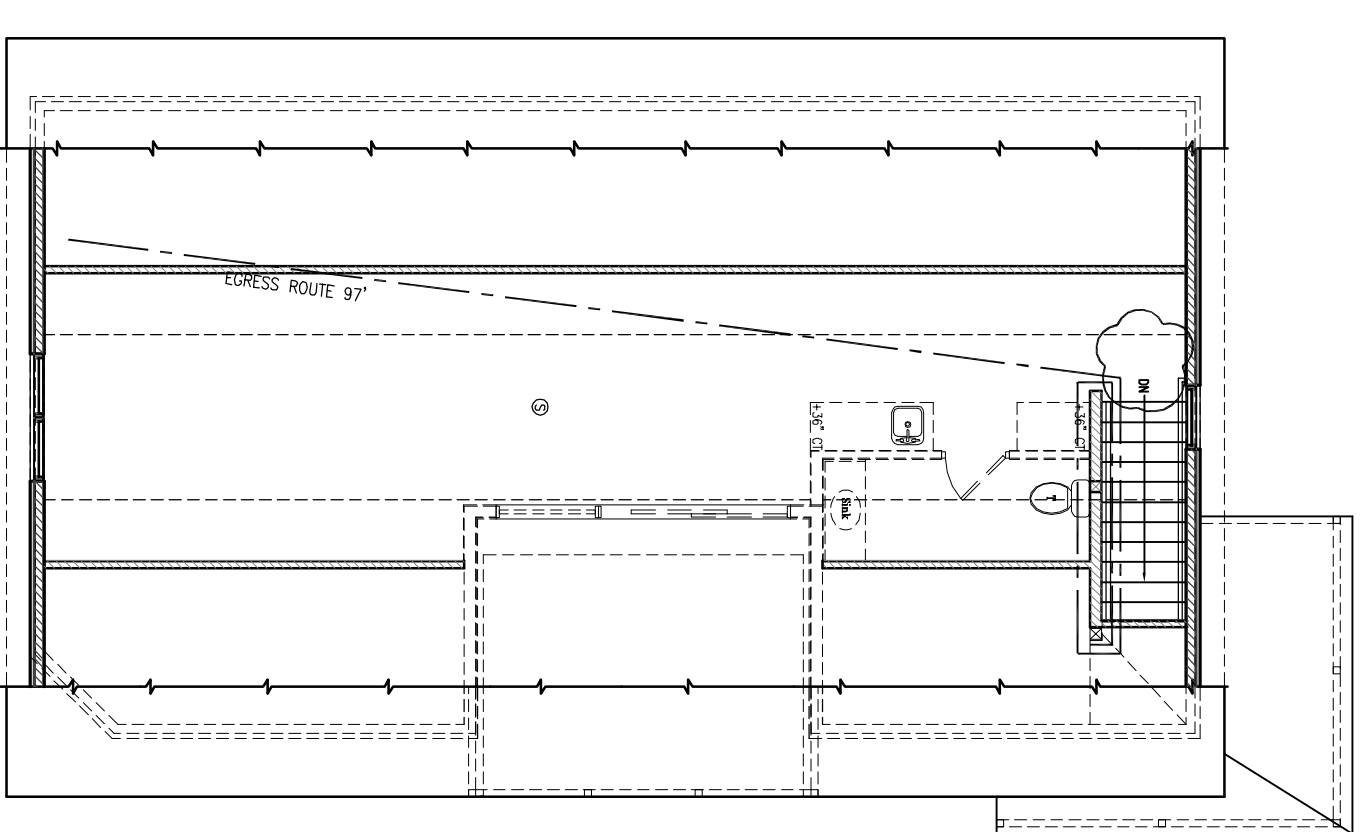
15 Walton Street
Portland Maine 04103

JOB: 11024

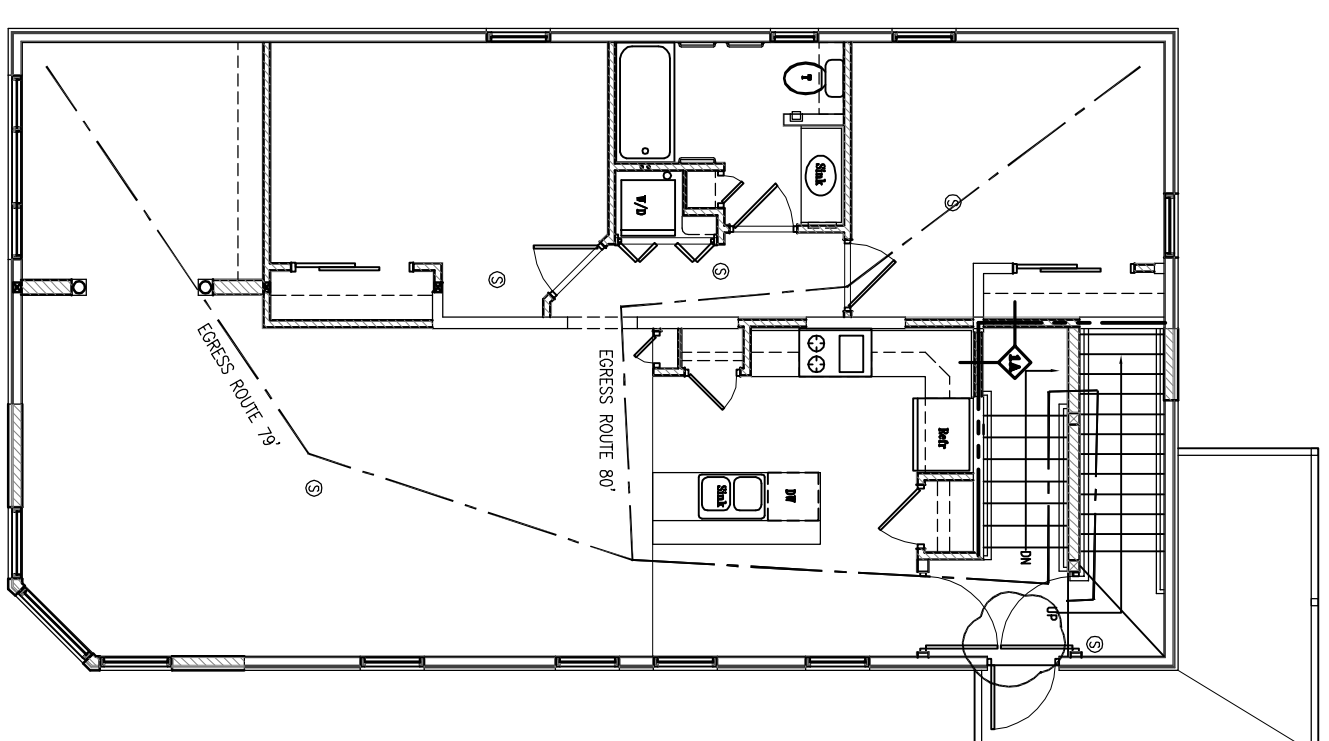
| ISSUE DATE | |
|------------|-----------|
| PRELIM. | 08-25-11 |
| Board | Not Rec'd |
| CDs | 10-12-11 |
| REV. 1 | - |
| REV. 2 | - |
| PRINT | 11-04-11 |

BASEMENT, 1st,
2nd, 3rd & 4th FLOOR
LIFE SAFETY PLANS

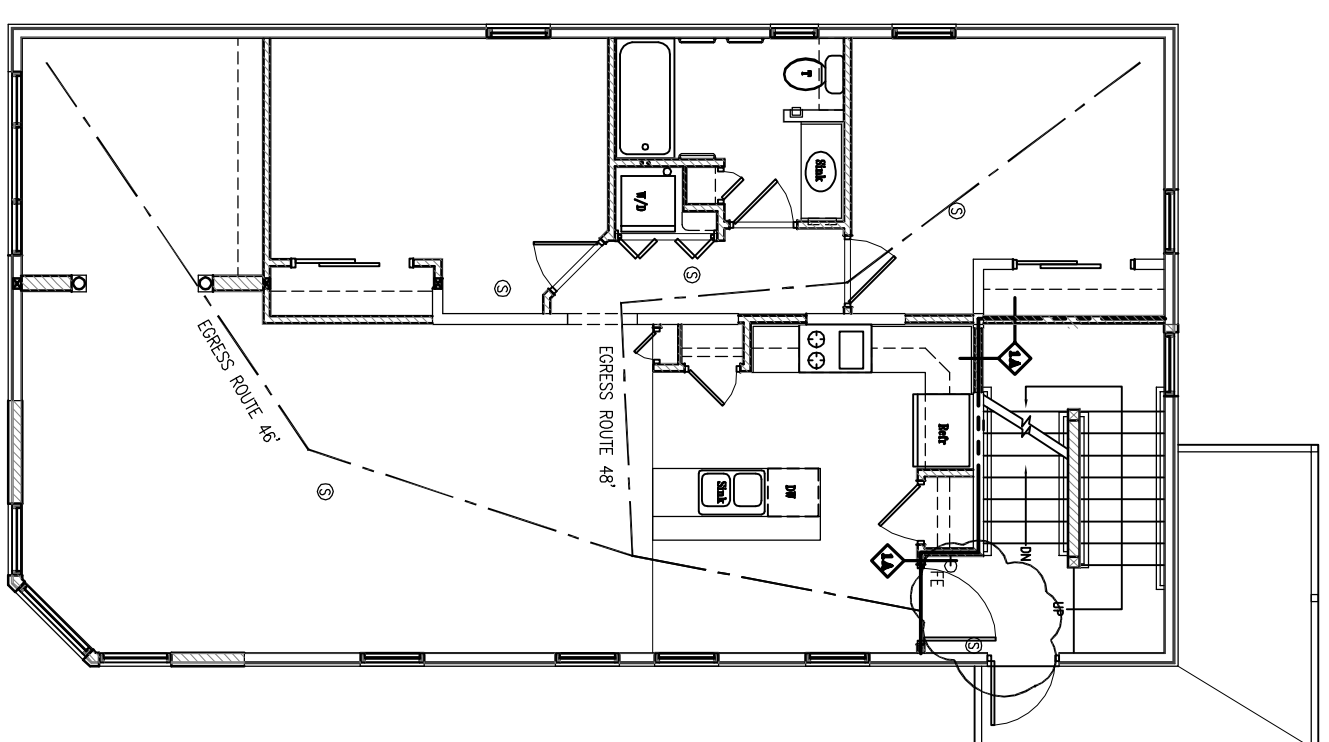
LS1.0



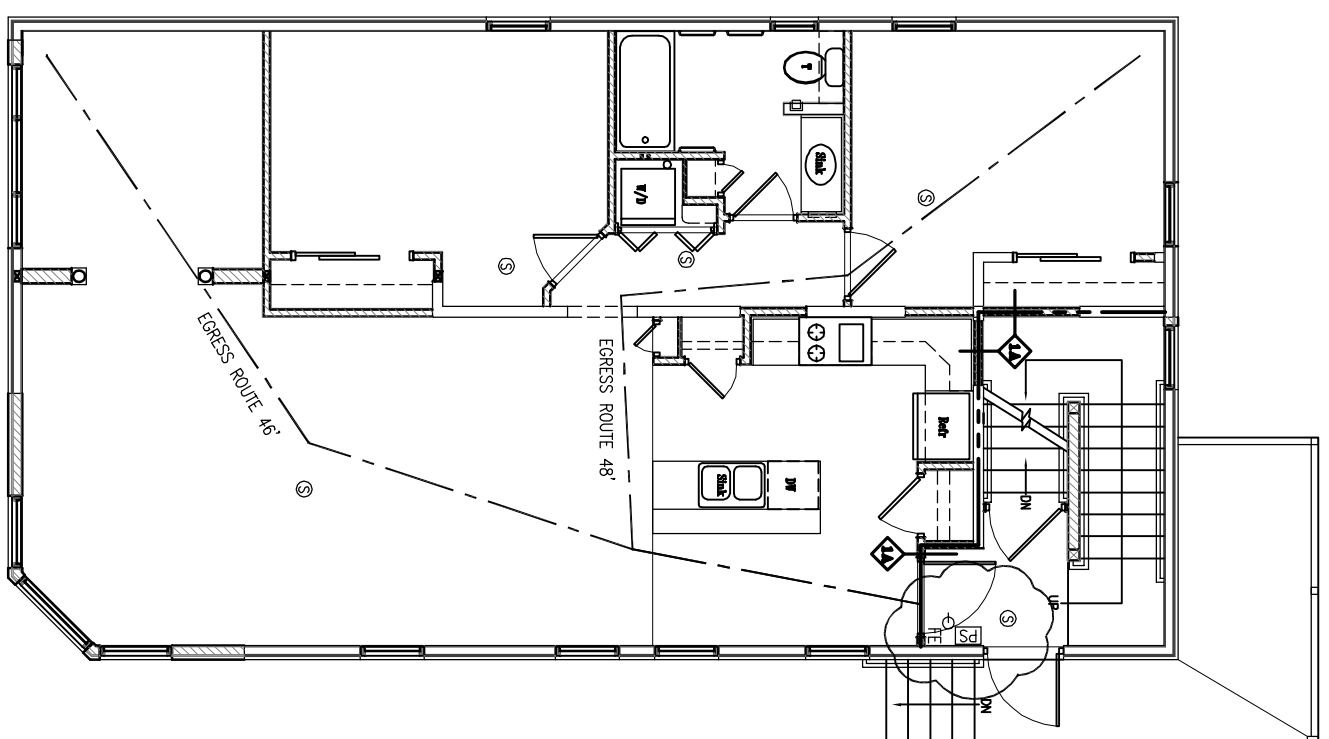
ATTIC LIFE SAFETY PLAN
SCALE: 1/8" = 1'-0"



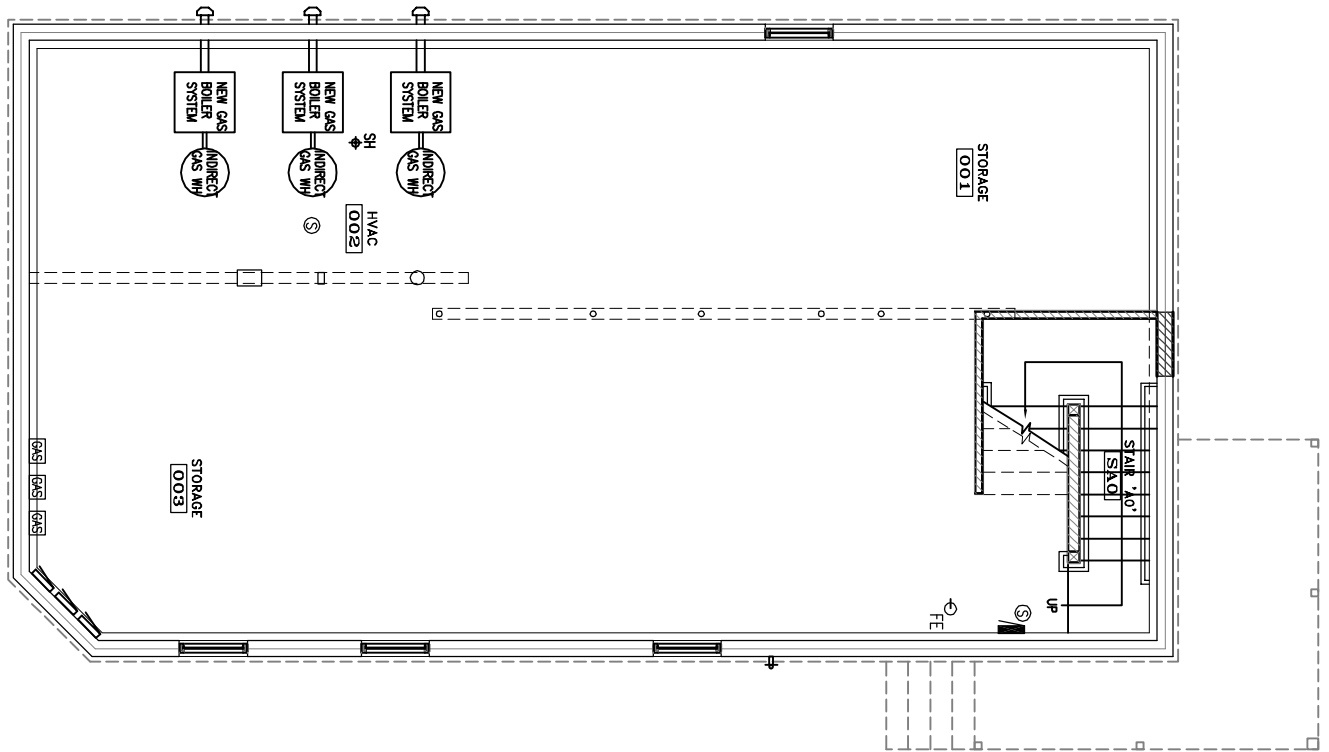
THIRD FLOOR LIFE SAFETY PLAN
SCALE: 1/8" = 1'-0"



SECOND FLOOR LIFE SAFETY PLAN
SCALE: 1/8" = 1'-0"



FIRST FLOOR LIFE SAFETY PLAN
SCALE: 1/8" = 1'-0"



BASEMENT LIFE SAFETY PLAN
SCALE: 1/8" = 1'-0"

FIRE PROTECTION LEGEND

| | |
|--|---|
| | FIRE EXTINGUISHER 10# ABC |
| | EXIT LIGHT |
| | STROBE ONLY WITH CANDELLA RATING AS NOTED |
| | HORN STROBE WITH CANDELLA RATING AS NOTED |
| | DUAL EMERGENCY LIGHT |
| | SINGLE EMERGENCY LIGHT |
| | SMOKE DETECTOR (CEILING) |
| | HEAT DETECTOR (CEILING) |
| | COMBINATION LIGHT/EXHAUST FAN |
| | FIRE ALARM MASTER CONTROL PANEL |
| | PULL STATION |
| | EXTERIOR EGRESS LIGHT |
| | NOT AN EXIT SIGN W RAISED BRILLE |
| | VAN ACCESSIBLE |

NOTE:
SMOKE DETECTORS TO BE INTERCONNECTED w/ BATTERY BACK-UP

ABBREVIATIONS:

| | | |
|--------|---|---------------------------|
| CO | = | CEASED OPENING |
| CL | = | CLIP |
| SC | = | SCREW |
| DOOR | = | DOOR CLOSER |
| HINGES | = | HINGES |
| WS | = | WEATHER STRIPPING SYSTEM |
| DB | = | DEAD BOLT |
| L | = | ADA LEVER |
| BBC | = | BALL BEARING CENTER HINGE |
| SF | = | STEEL FRAME |
| STL | = | STEEL PRODUCT |
| F | = | FLOORING |
| R | = | REVISION TO REBANK |
| N | = | NEW |

LIFE SAFETY NOTES:

1. PROVIDE INTERCONNECTED SMOKE DETECTOR SYSTEM SYSTEM TO BE HARDWIRED w/ BATTERY BACK-UP.

AMENDED PERMIT SET 11-04-11