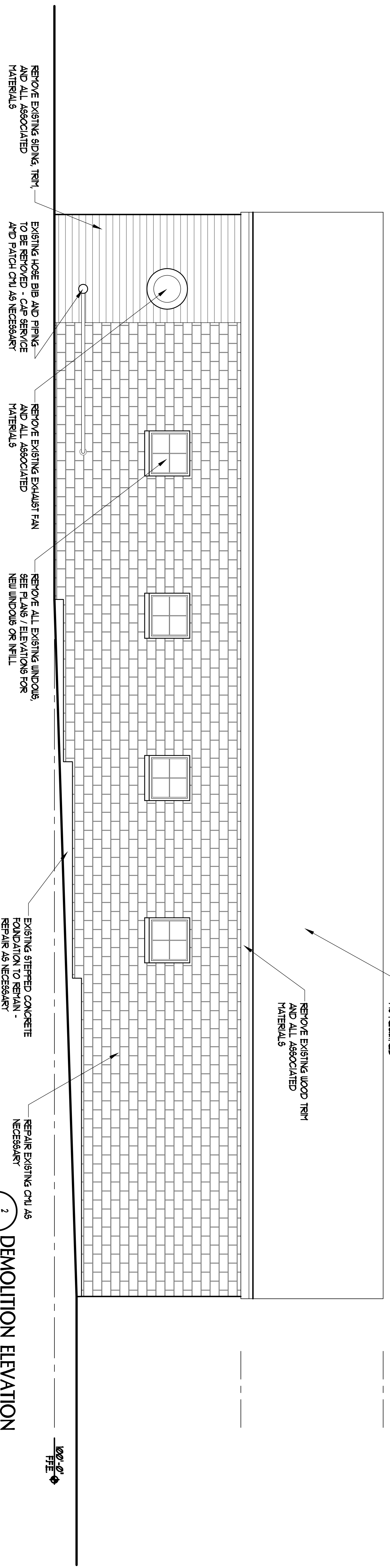
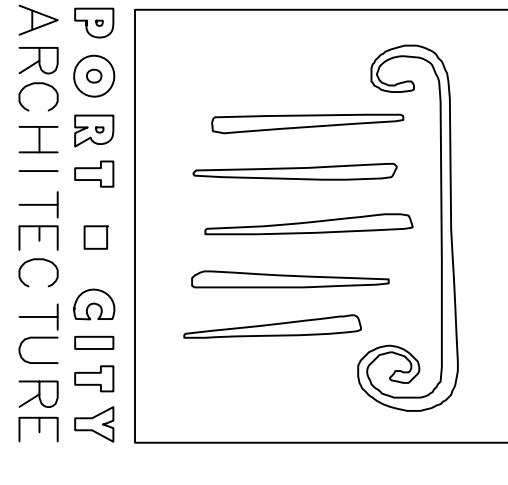


1 DEMOLITION ELEVATION
 DIS/D3 0 4'-0" SCALE: 1/4" = 1'-0"



2 DEMOLITION ELEVATION
 DIS/D3 0 4'-0" SCALE: 1/4" = 1'-0"



65 NEWBURY STREET
 PORTLAND, ME 04101
 207.761.9000
 fax: 207.761.2010
 info@portcityarch.com

Borealis Breads
 Cafe & Bakery
 182 Ocean Ave
 Portland, Maine

NO.	DATE	DESCRIPTION
1
2

Project Number: 07210
 Date Issued: 04/29/08
 Drawing Scale: 1/4" = 1'-0"
 SHEET NAME: DEMOLITION ELEVATIONS

Drawn By: NLS
 Checked By: JCC
D13