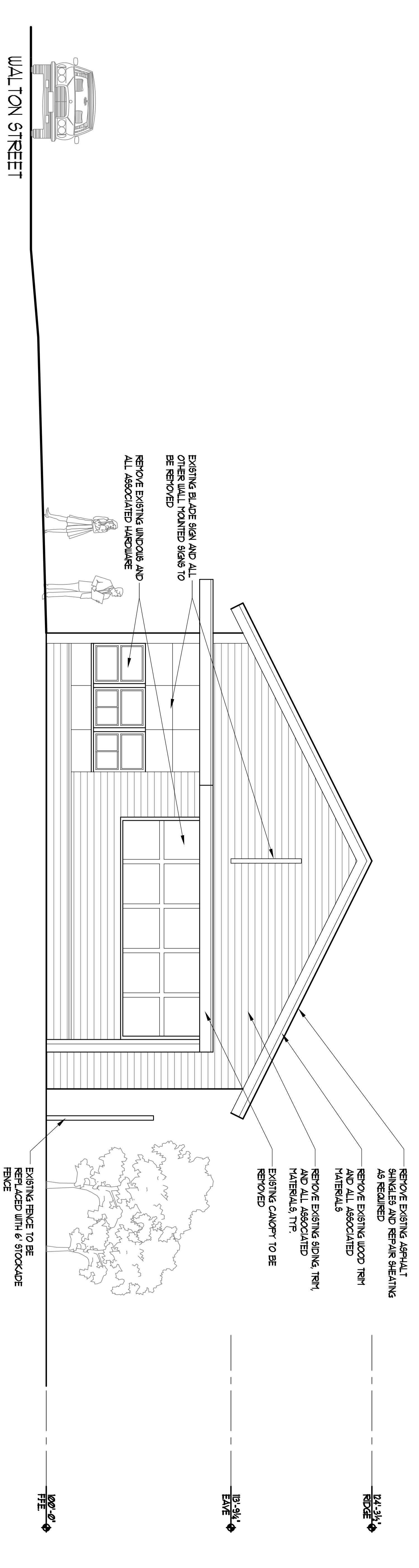
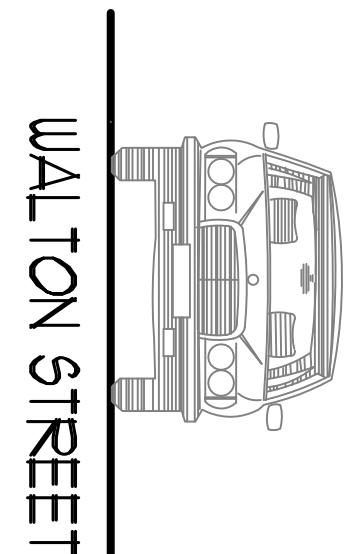


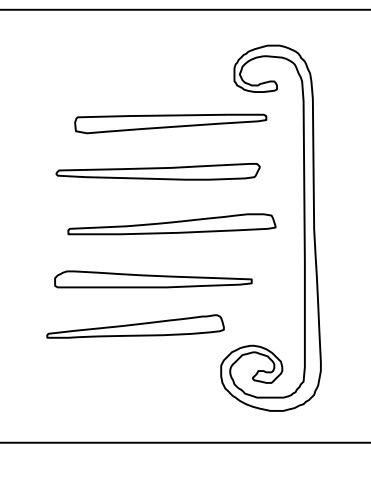
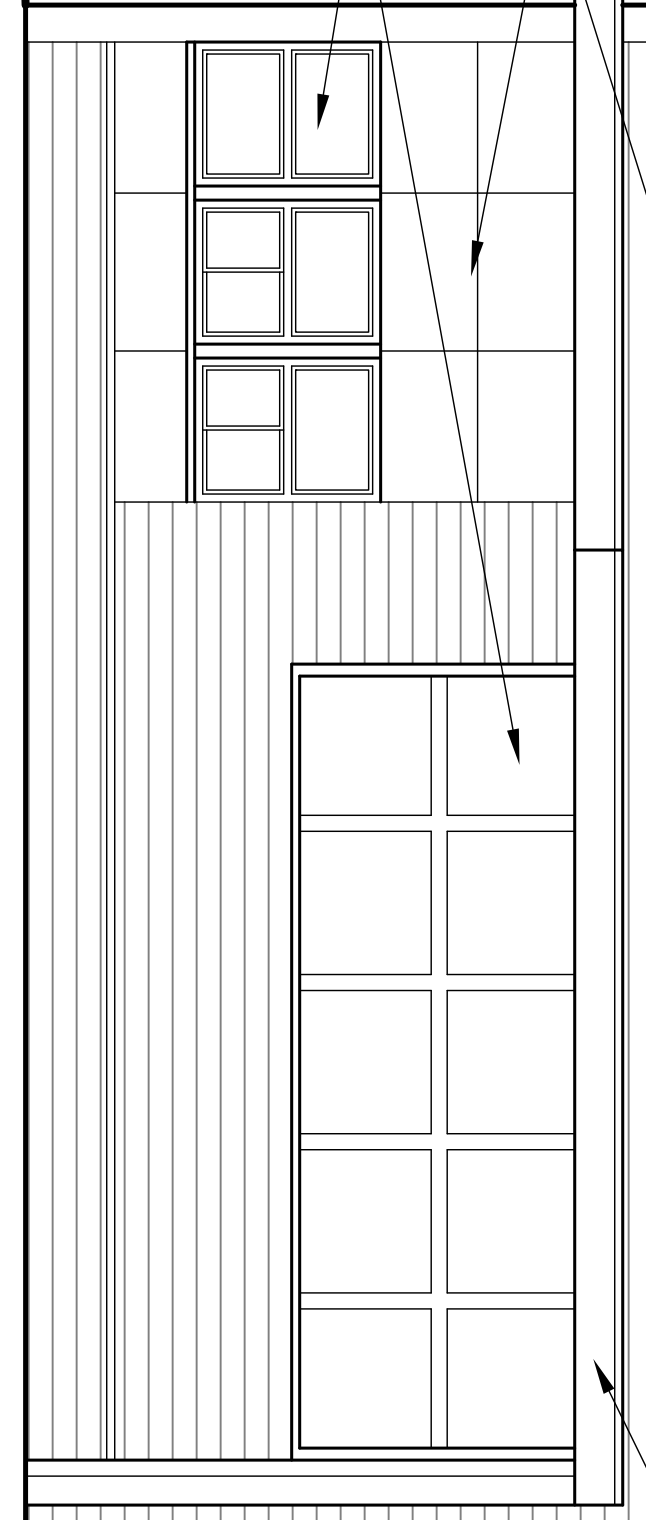
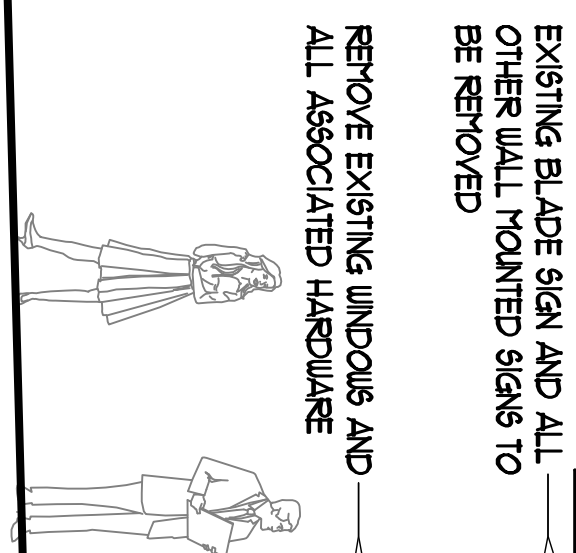
1 DEMOLITION ELEVATION
SCALE: 1/4" = 1'-0"



2 DEMOLITION ELEVATION
SCALE: 1/4" = 1'-0"



WALTON STREET



PORT CITY ARCHITECTURE
65 NEWBURY STREET
PORTLAND, ME 04101
207.761.9000
fax: 207.761.2010
info@portcityarch.com

Borealis Breads
Cafe & Bakery
182 Ocean Ave
Portland, Maine

NO.	DATE	DESCRIPTION
1
2

Project Number: 07210
Date Issued: 04/29/08
Drawing Scale: 1/4" = 1'-0"
SHEET NAME: DEMOLITION ELEVATIONS

Drawn By: NLS
Checked By: JCC
D112