

© 2017 RYAN SENATORE ARCHITECTURE

TIPO - PATIO RENOVATION
182 OCEAN AVENUE
PORTLAND, MAINE



RYAN SENATORE ARCHITECTURE
565 CONGRESS ST. SUITE 304
PORTLAND, MAINE 04101
207-650-6414
senatorearchitecture.com

CONSULTANTS:
STRUCTURAL:
Structural Integrity
77 Oak Street
Portland, ME 04101
207-774-4614

REVISIONS:

DATE: 25 April, 2017

PROJECT No. 1634-A

DRAWN BY: BDH

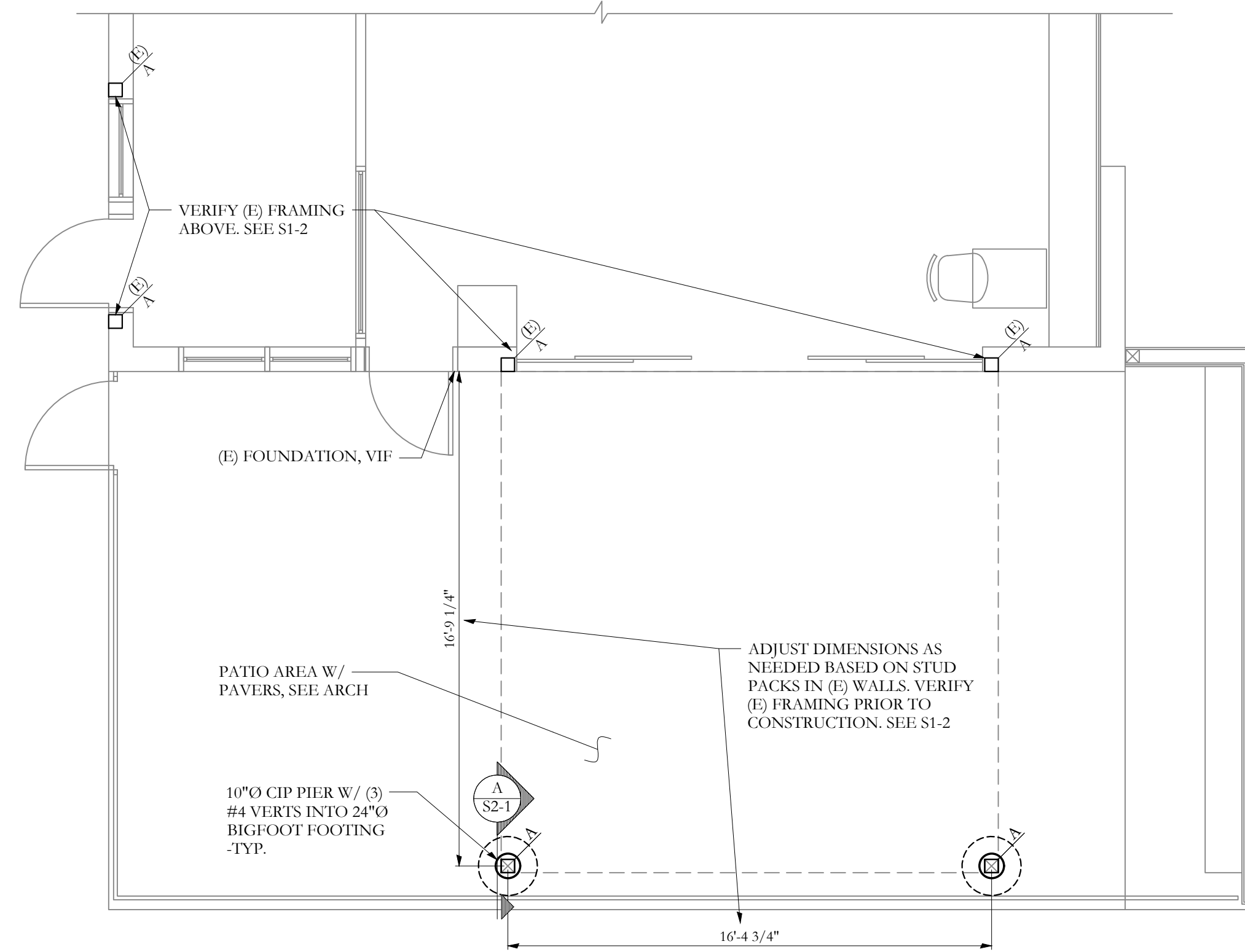
CHECKED BY: ACJ

SCALE: AS NOTED

SHEET TITLE:

FOUNDATION PLAN

S1-1



FOUNDATION PLAN
SCALE 1/4"=1'-0"

- NOTES:
1. SEE GENERAL NOTES FOR ADDITIONAL INFORMATION.
 2. BOTTOM OF FOOTINGS TO BEAR 4'-0" BELOW GRADE, MIN.
 3. SEE ARCH FOR TOP OF PIER ELEVATIONS TO COORDINATE WITH PATIO PAVERS.