

© 2017 RYAN SENATORE ARCHITECTURE

TIPO - PATIO RENOVATION
 182 OCEAN AVENUE
 PORTLAND, MAINE



RYAN SENATORE ARCHITECTURE
 565 CONGRESS STREET
 PORTLAND, MAINE 04101
 207-650-6414
 senatorearchitecture.com

CONSULTANTS:
STRUCTURAL:
 Structural Integrity
 77 Oak Street
 Portland, ME 04101
 207-774-4614

REVISIONS:

DATE: APRIL 27, 2017

PROJECT No. 1634-A

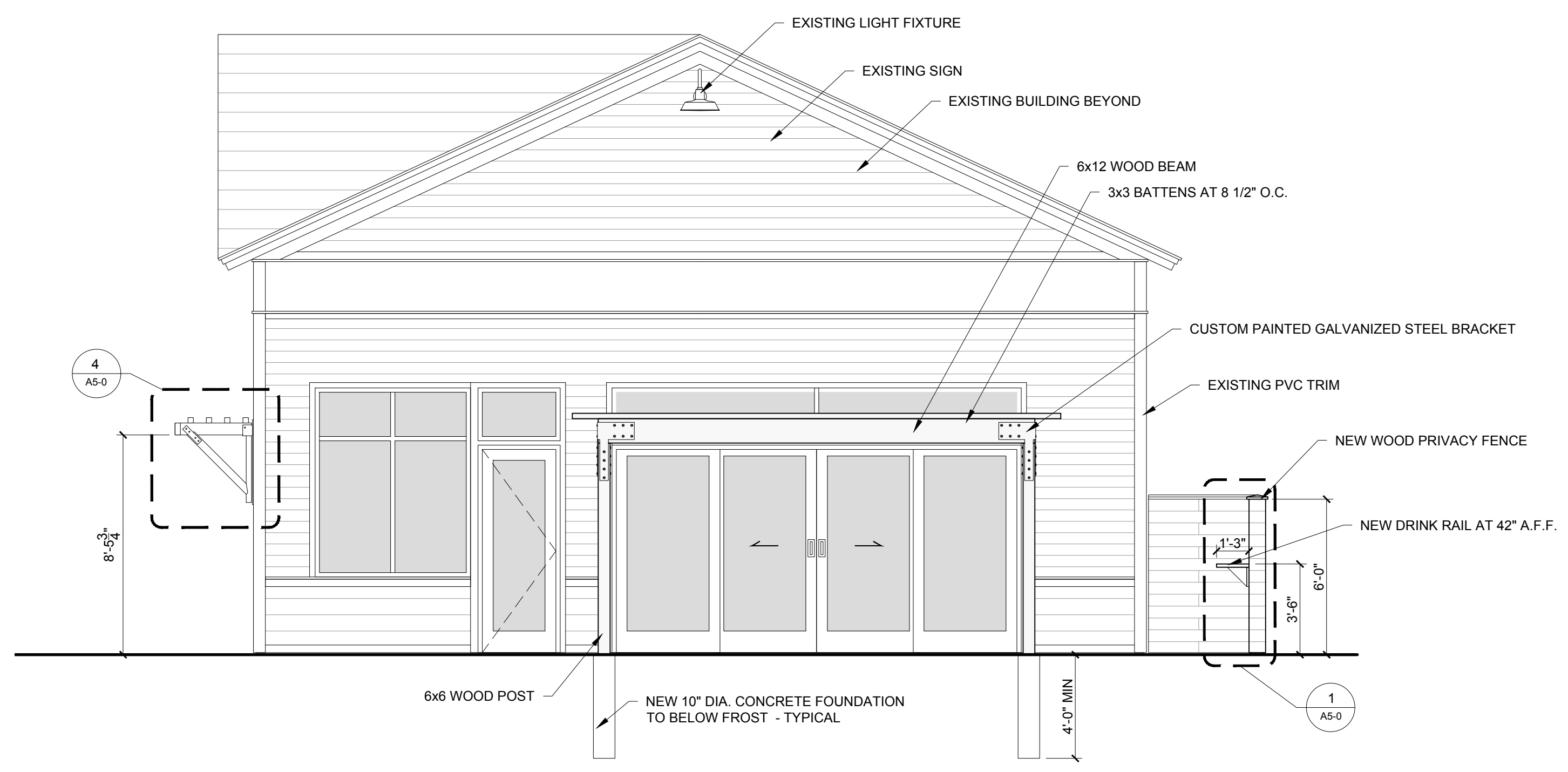
DRAWN BY: JPF

CHECKED BY: RJS

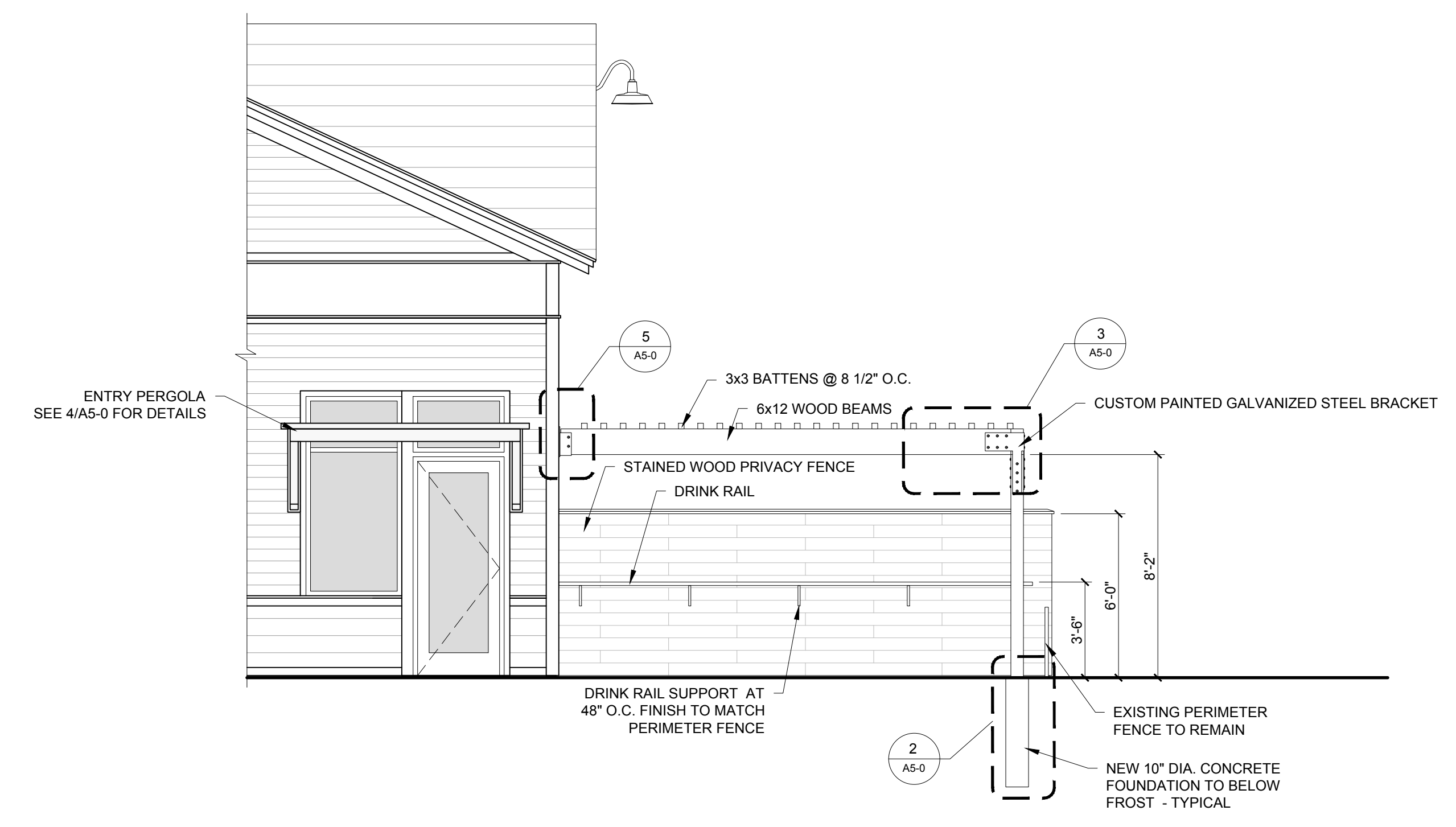
SCALE: AS NOTED

SHEET TITLE:
EXTERIOR ELEVATIONS

A2-0



1 EAST ELEVATION
 1/4" = 1'-0"



2 SOUTH ELEVATION
 1/4" = 1'-0"