



110 FIRST PLYMOUTH ROAD
WOODSTOCK, NB CANADA
1-888-544-3100

**HARTFORD
ENTERPRISES**

PORTLAND,
MAINE

GRIBBIN

**PFS Corporation
Northeast Region
APPROVED
R Wenner - 1
10/18/06
Approval limited to
Factory Built Portion**

ALL PRODUCTS DESCRIBED HEREIN ARE BELIEVED TO BE CORRECT AT THE TIME OF PUBLICATION. DURING THE PRODUCT YEAR, IT MAY BECOME NECESSARY FOR HOSPITALITY HOMES LTD TO PRODUCE HOMES DIFFERENT COMPONENTS THAN INITIALLY SCHEDULED. HOSPITALITY HOMES LTD RESERVES THE RIGHT TO MAKE CHANGES IN PRICES, COLOR, MATERIALS, COMPONENTS & SPECS. AND TO DISCONTINUE MODELS AT ANY TIME WITHOUT NOTICE.

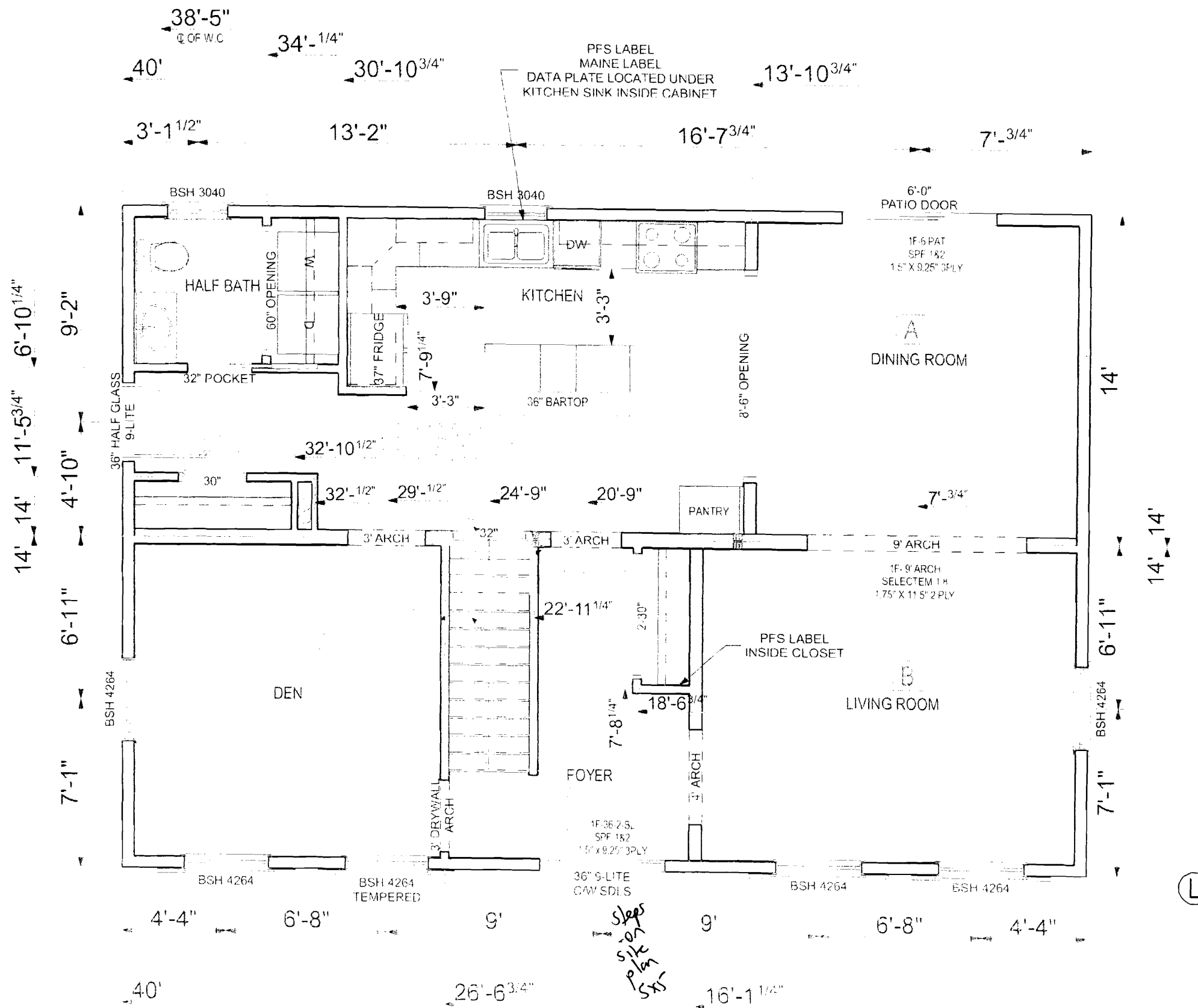
PROJECT NO: **K-46**

DATE: 10/17/2006

DRAWN BY: IRIS STAIRS

CHK'D BY: AH

PAGE: 6



MAIN FLOOR PLAN

INTERIOR DIMENSIONS ARE FROM FRAME TO FRAME

*stair
slopes
plan
S/S*



110 FIRST PLYMOUTH ROAD
WOODSTOCK, NB CANADA
1-888-544-3100

**HARTFORD
ENTERPRISES**

PORTLAND,
MAINE

GRIBBIN

**PFS Corporation
Northeast Region
APPROVED
R Wenner - 1
10/18/06
Approval limited to
Factory Built Portion**

ALL PRODUCTS DESCRIBED HEREIN ARE BELIEVED TO BE CORRECT AT THE TIME OF PUBLICATION. DURING THE PRODUCT YEAR, IT MAY BECOME NECESSARY FOR HOSPITALITY HOMES LTD TO PRODUCE HOMES DIFFERENT COMPONENTS THAN INITIALLY SCHEDULED. HOSPITALITY HOMES LTD RESERVES THE RIGHT TO MAKE CHANGES IN PRICES, COLOR, MATERIALS, COMPONENTS & SPECS, AND TO DISCONTINUE MODELS AT ANY TIME WITHOUT NOTICE.

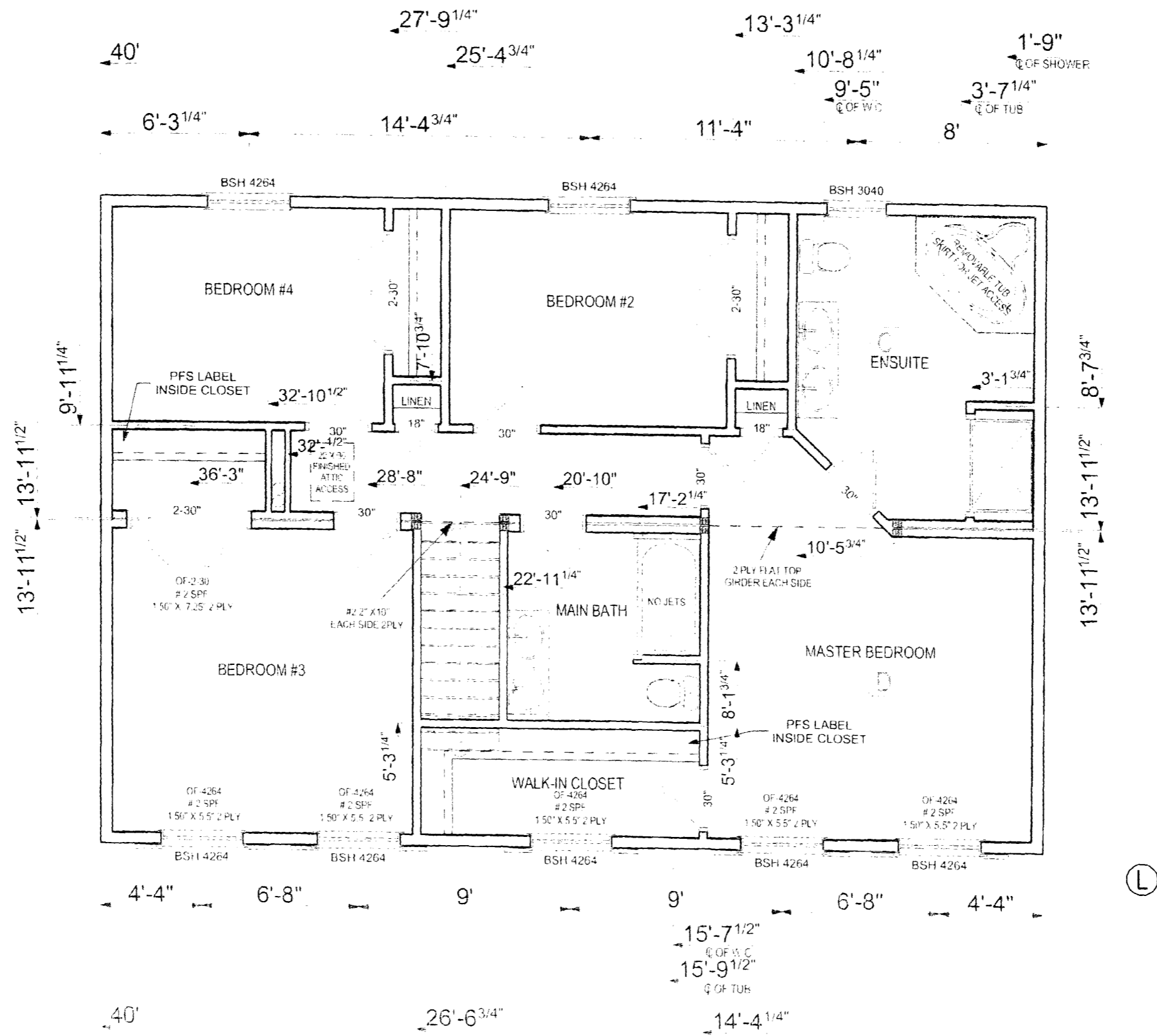
PROJECT NO: **K-46**

DATE: 10/17/2006

DRAWN BY: IRIS STAIRS

CHK'D BY: AH

PAGE: 7



SECOND FLOOR PLAN

INTERIOR DIMENSIONS ARE FROM FRAME TO FRAME



110 FIRST PLYMOUTH ROAD
WOODSTOCK, NB CANADA
1-888-544-3100

**HARTFORD
ENTERPRISES**

PORTLAND,
MAINE

GRIBBIN

2003 INTERNATIONAL RESIDENTIAL C/W
AMENDMENTS
2001 NFPA 31, STD FOR THE INST. OF
OIL BURNING EQUIP.
2002 NFPA 54, NATIONAL FUEL GAS CODE
2001 NFPA 58, LIQUIFIED PETROLEUM GAS CODE
2002 NFPA 70, NATIONAL ELECTRICAL CODE
2003 NFPA 211 STANDARDS FOR CHIMNEYS,
FIREPLACES, VENTS AND
SOLID FUEL BURNING APPLIANCES
2003 STATE OF MAINE OIL AND SOLID
FUEL BOARD LAW & RULES

ALL PRODUCTS DESCRIBED HEREIN ARE BELIEVED
TO BE CORRECT AT THE TIME OF PUBLICATION.
DURING THE PRODUCT YEAR, IT MAY BECOME
NECESSARY FOR HOSPITALITY HOMES LTD TO
PRODUCE HOMES DIFFERENT COMPONENTS THAN
INITIALLY SCHEDULED. HOSPITALITY HOMES LTD
RESERVES THE RIGHT TO MAKE CHANGES IN
PRICES, COLOR, MATERIALS, COMPONENTS &
SPECS. AND TO DISCONTINUE MODELS AT ANY
TIME WITHOUT NOTICE.

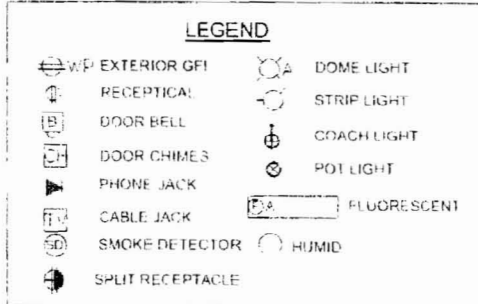
PROJECT NO: **K-46**

DATE : 10/17/2006

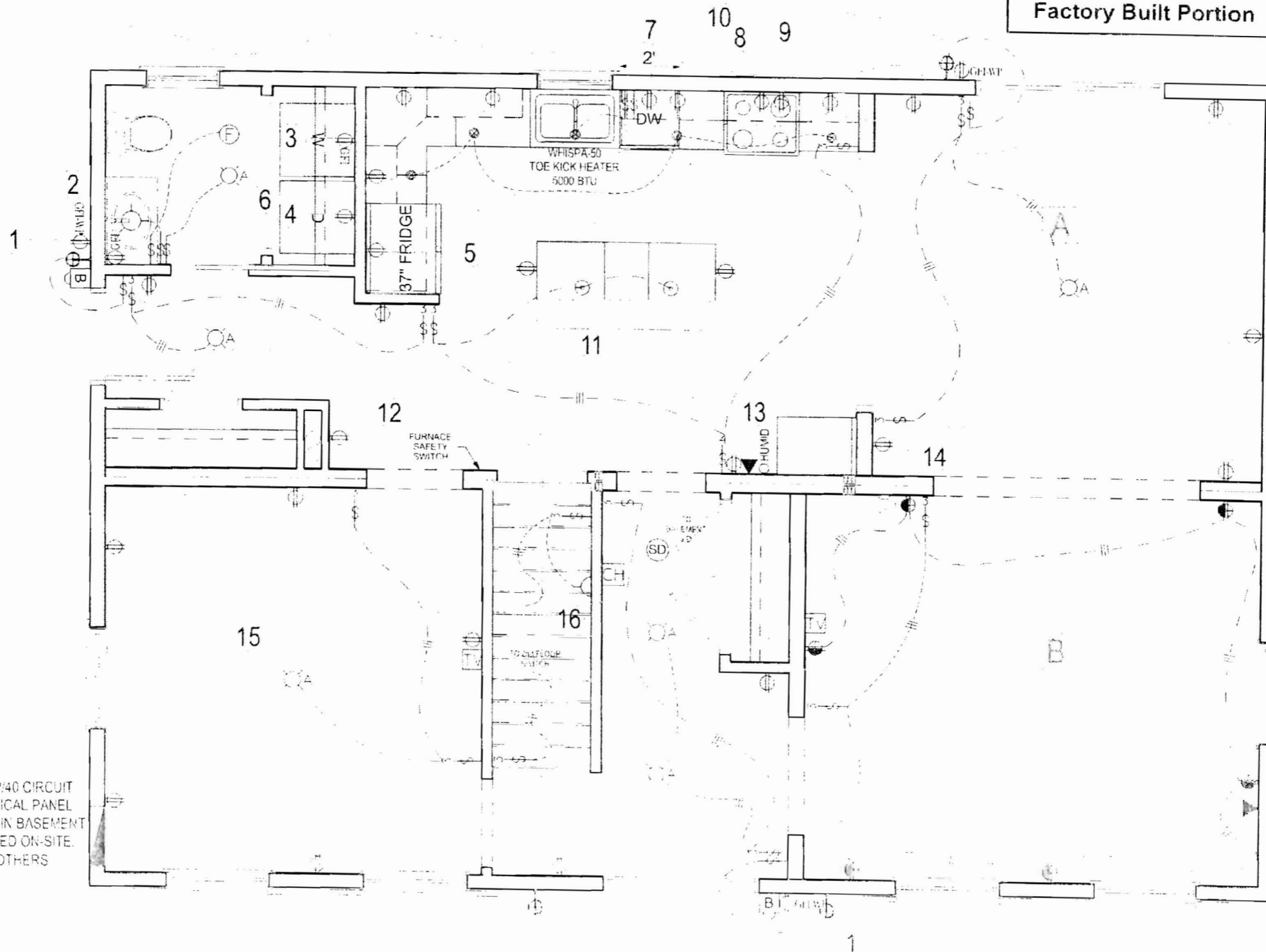
DRAWN BY: IRIS STAIRS

CHK'D BY: AH

PAGE 8



PFS Corporation
Northeast Region
APPROVED
R Wenner - 1
10/18/06
Approval limited to
Factory Built Portion



200 AMP/40 CIRCUIT
ELECTRICAL PANEL
LOCATED IN BASEMENT
INSTALLED ON-SITE.
BY OTHERS

ELECTRICAL LAYOUT