

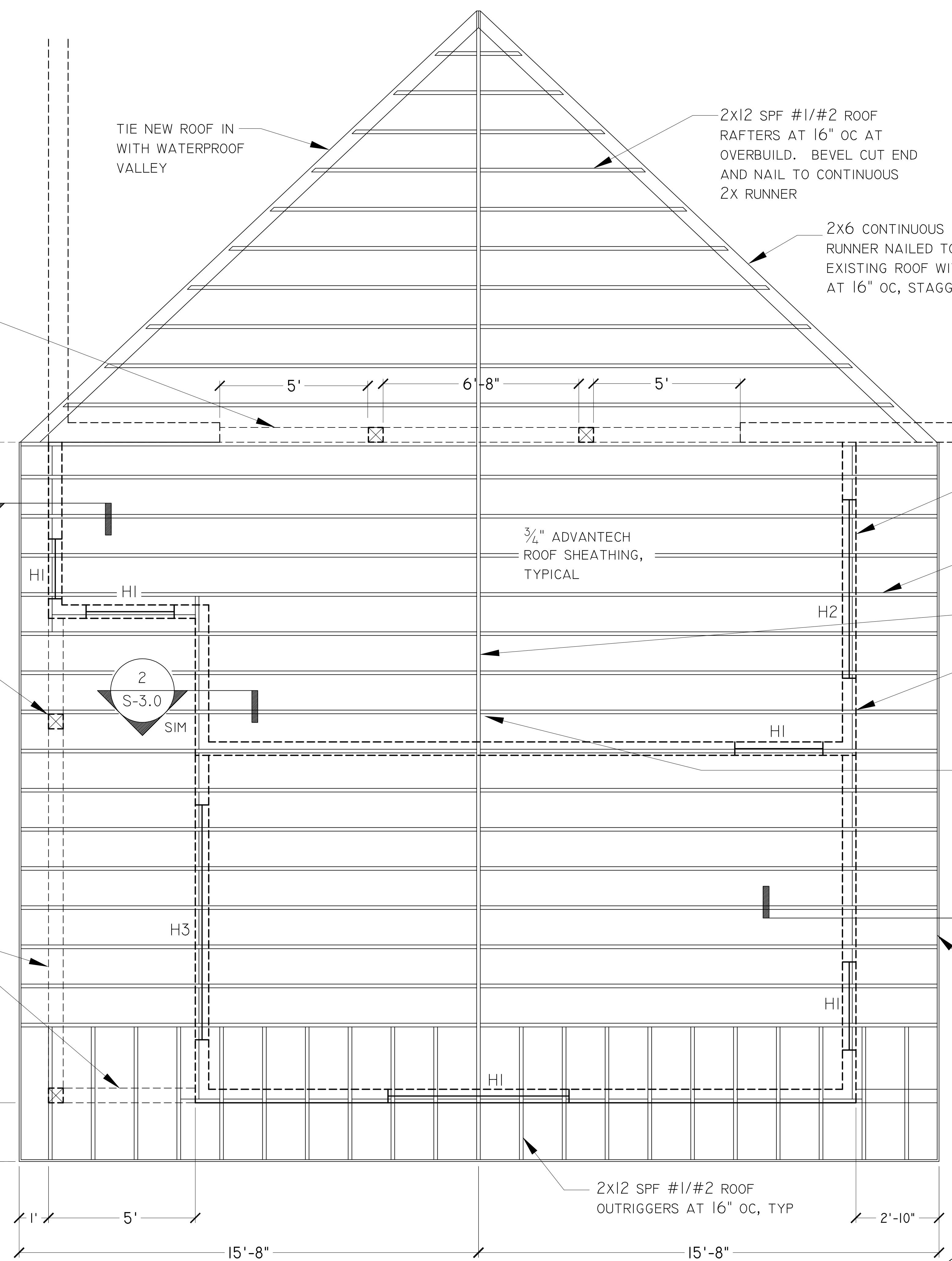
DECK FRAMING PLAN

18" Ø x 8" CONCRETE FOOTING ON A BED OF CRUSHED STONE, TYPICAL

4x4 PT POST DOWN TO FOOTING, TYPICAL

2x6 PT BEAM ON EITHER SIDE OF 4x4 PT POST. PROVIDE THRU-BOLTED CONNECTION AND PROVIDE BLOCKING

2x6 PT JOISTS AT 16" OC. PROVIDE BLOCKING BETWEEN JOISTS



2x8 BLOCKING BETWEEN RAFTERS ALONG ENTIRE PERIMETER

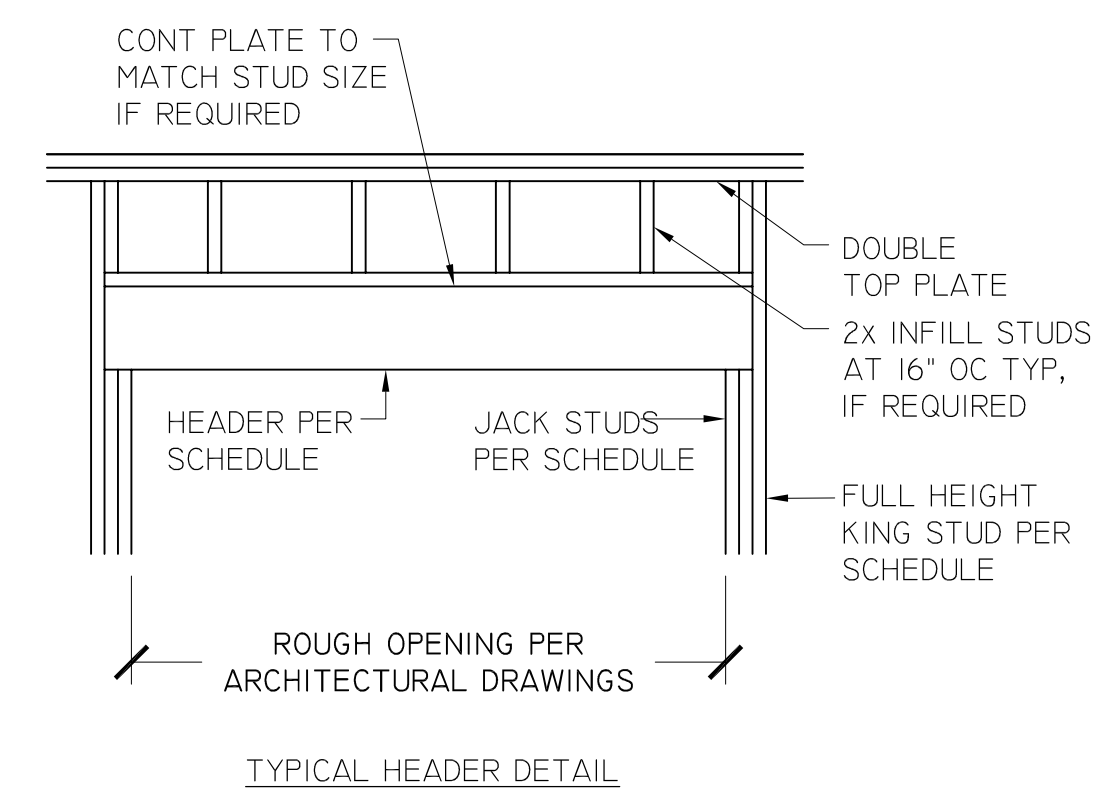
2x12 SPF #1/#2 ROOF RAFTERS AT 16" OC, TYP

2x12 SPF #1/#2 CONTINUOUS ROOF RIDGE

H2.5A HURRICANE TIE BY SIMPSON STRONG-TIE AT EACH RAFTER. FASTEN WITH (5) 8 NAILS EACH LEG

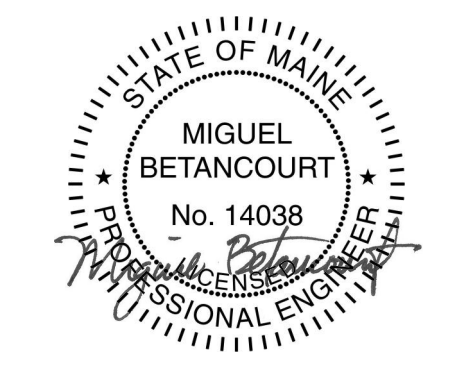
LRU210Z RAFTER HANGER BY SIMPSON STRONG-TIE AT EACH RAFTER. FASTEN WITH (6) 10D NAILS TO THE FACE AND (7) 10D NAILS TO THE JOIST

HEADER SCHEDULE			
MARK	HEADER SIZE	JAMB STUDS	
		JACK	KING
H1	(3) 2x6	(1) 2x6	(1) 2x6
H2	(3) 2x8	(1) 2x6	(1) 2x6
H3	(3) 2x10	(2) 2x6	(1) 2x6



NOTES:

- HEADERS BUILT-UP WITH DIMENSIONAL LUMBER SHALL REQUIRE 1/2" PLYWOOD FILLER BETWEEN PLYS TO MAINTAIN WIDTH OF WALL.
- ASSEMBLY JACK STUD(S) TO KING STUD WITH (2) 10d NAILS AT 12" oc STAGGERED.



Drawing Scale:  
 1/2" = 1'-0"

Drawing Date:  
 04.29.18

Sheet Title:  
 Kitchen Roof Frame Plan

Sheet Number:  
**S-1.1**

