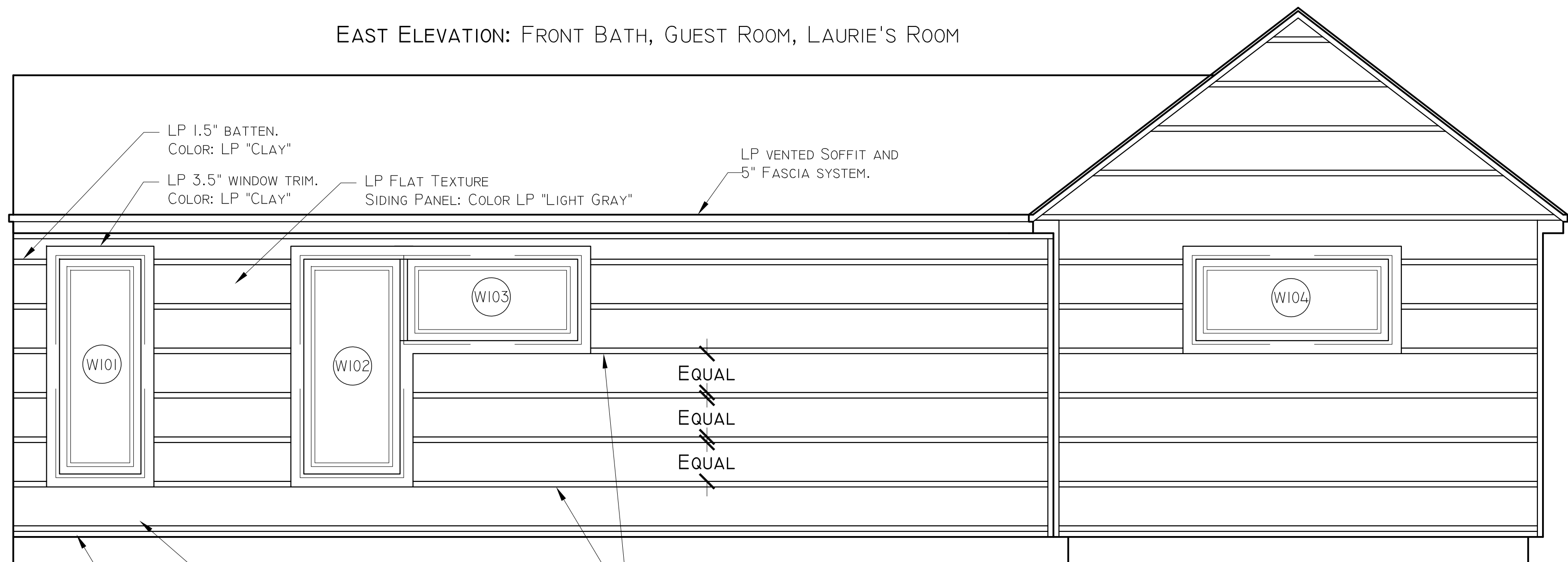


EAST ELEVATION: FRONT BATH, GUEST ROOM, LAURIE'S ROOM

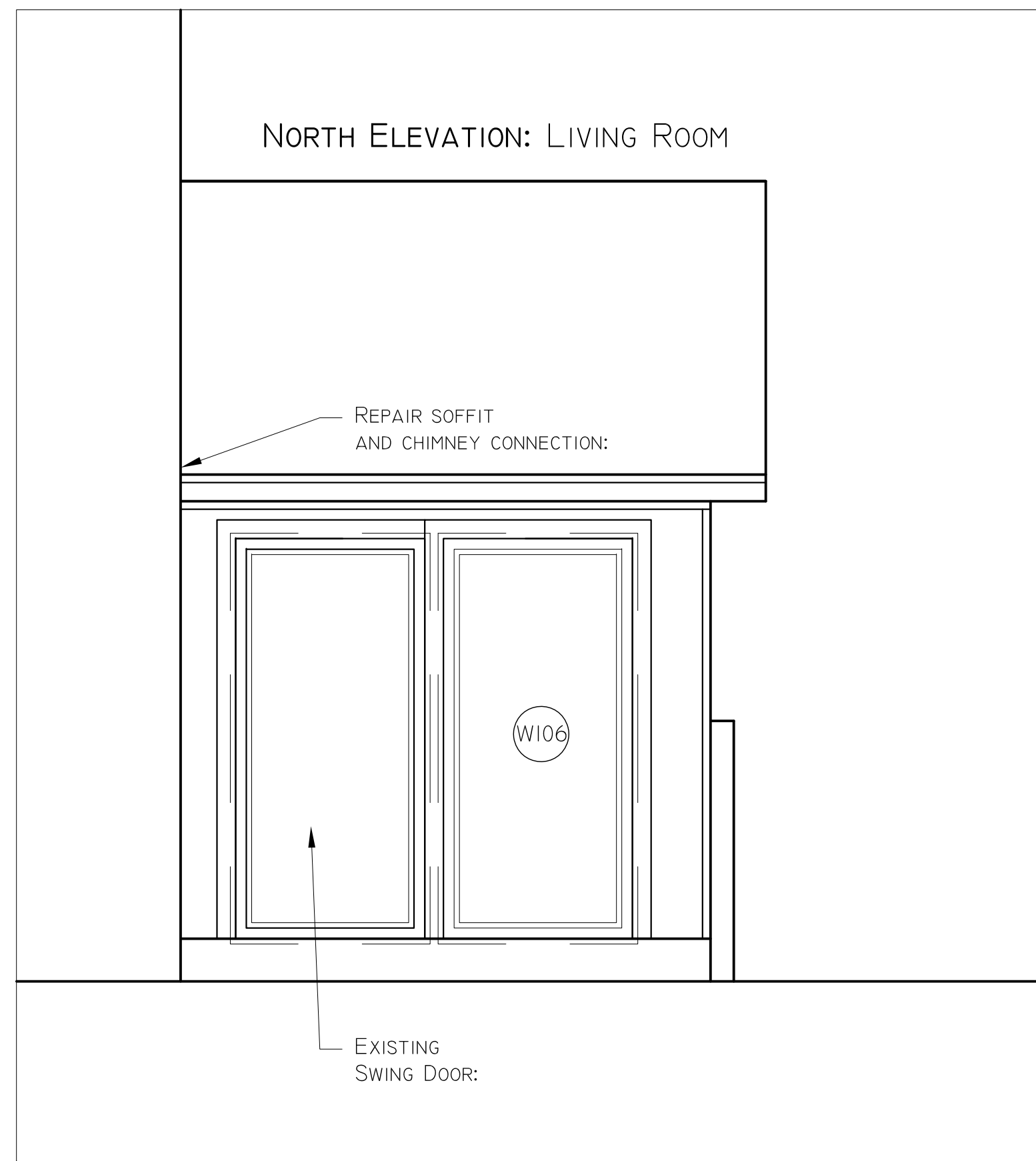


LP SIDING PANEL:
REMOVE LOWER BOARDS OF EXISTING SIDING AND EXPOSE 2 EXISTING CELLAR WINDOWS. REPLACE CELLAR WINDOWS. CREATE A 2' DEEP WINDOW WELL FOR DRAINAGE

SET BOTTOM BATTEN FLUSH TO WINDOW TRIM. THIS SETS THE SPACING FOR ALL BATTENS

SIDING SYSTEM:
EXISTING SHEATHING. NEW TYVEK BUILDING PAPER. TAPE ALL SEAMS.
4" WIDE LP SIDING PANELS AND 1/2" BATTEN TRIM. CONNECT AND CAULK ALL PANEL JOINTS PER MANUFACTURE RECOMMENDATIONS USING THE LP "WEATHERPROOFING PACKAGE" TO MAINTAIN WARRANTY. INCLUDES PROPER FLASHING COMPONENTS. APPLY FLASHING AT ALL WINDOW TRIM ACROSS TOP. BATTENS SHOULD COVER ALL PANEL FASTENERS. CAULK EACH SCREW HEAD. USE COATED DECK SCREWS NOT NAILS FOR PANEL FASTENERS. PLACE 1/8" PLASTIC WASHERS BETWEEN BATTEN AND PANEL AT BATTEN FASTENER. CAULK AND PAINT FASTENER HEADS TO MATCH. ORDER LP COLORS FOR TOUCH UP.

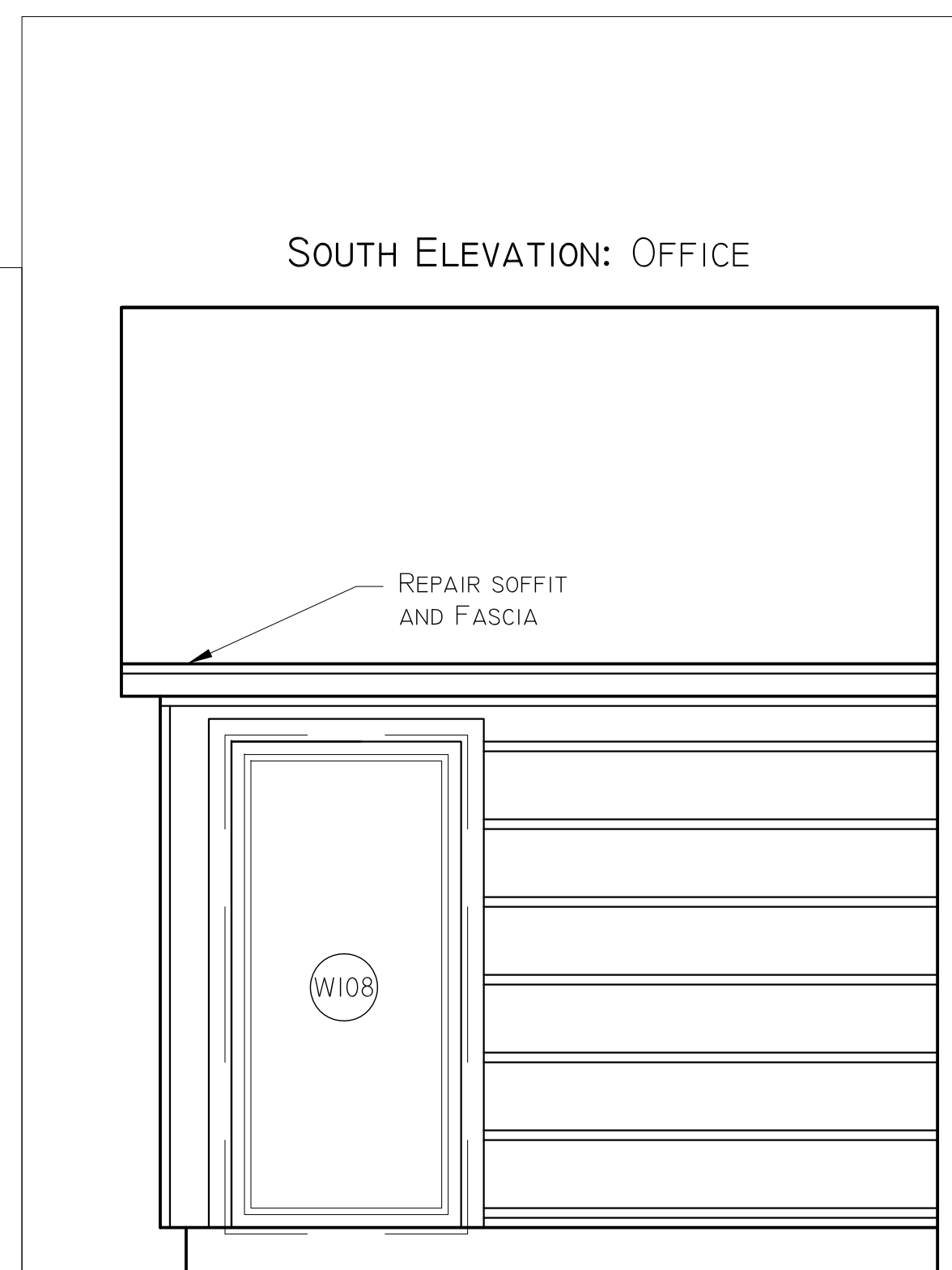
NORTH ELEVATION: LIVING ROOM



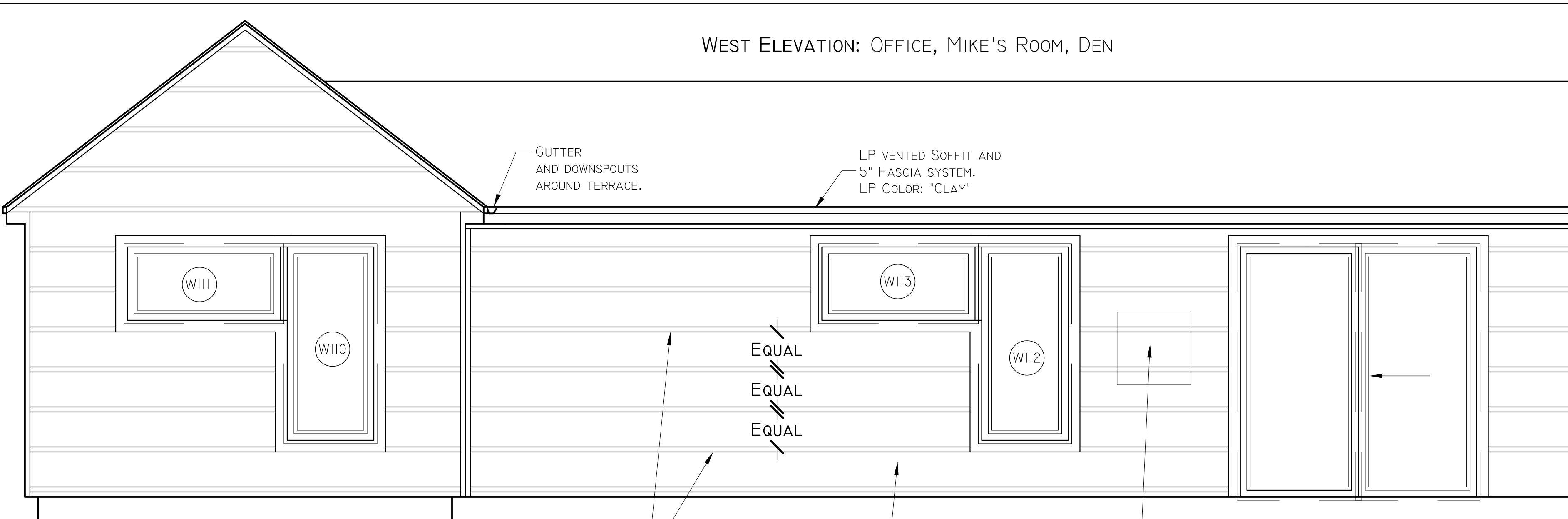
NORTH ELEVATION: LAURIE'S BEDROOM, BACK BATH, OFFICE



SOUTH ELEVATION: OFFICE



WEST ELEVATION: OFFICE, MIKE'S ROOM, DEN



SET BOTTOM BATTEN FLUSH TO WINDOW TRIM.

LP SIDING PANEL AND BATTEN SYSTEM:

REMOVE AND PATCH EXISTING AC UNIT: