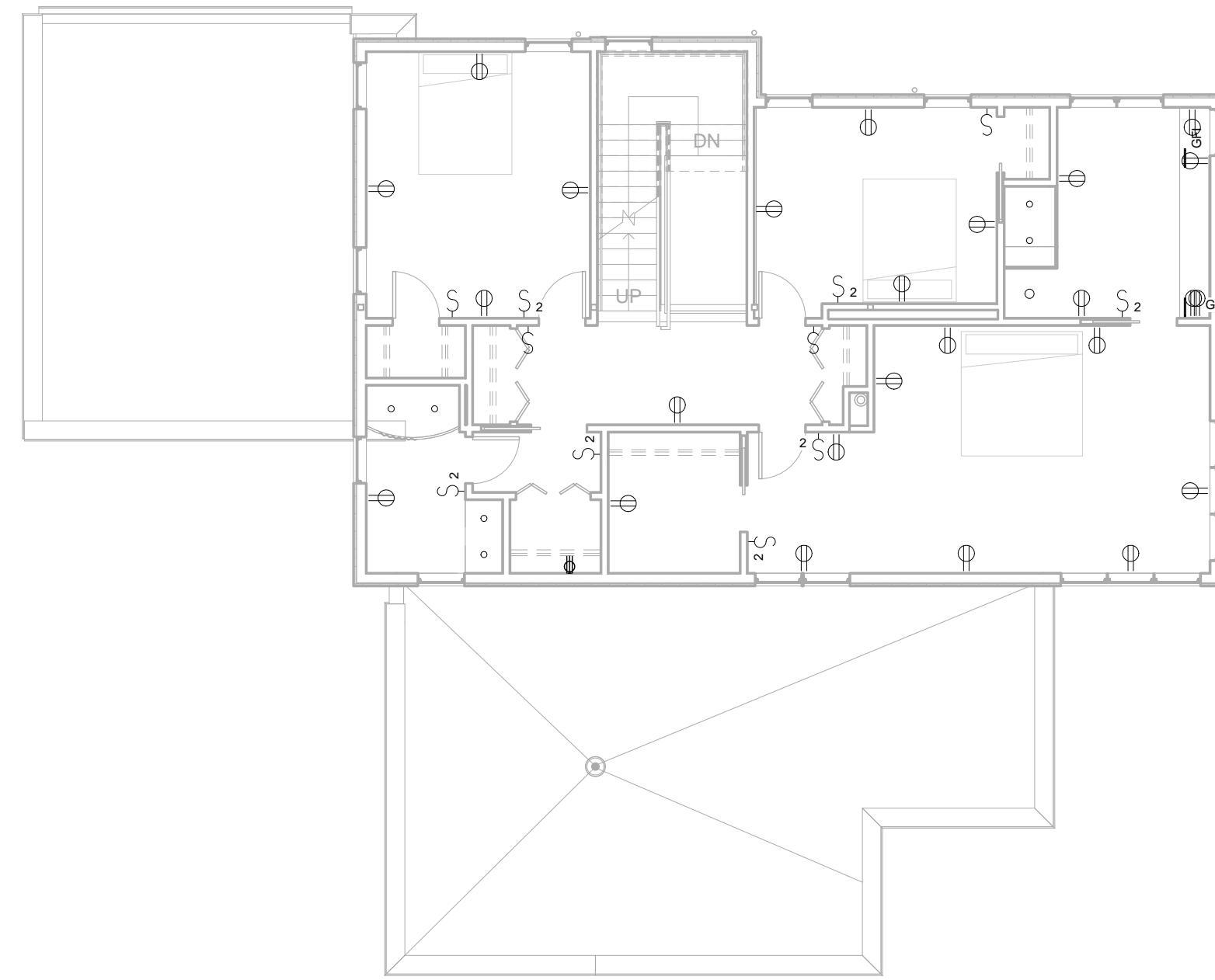


① 01 First - Electrical  
1/8" = 1'-0"



② 02 Second - Electrical  
1/8" = 1'-0"

## Electrical Notes

Electrical Power and Lighting to comply with Maine State Building Code

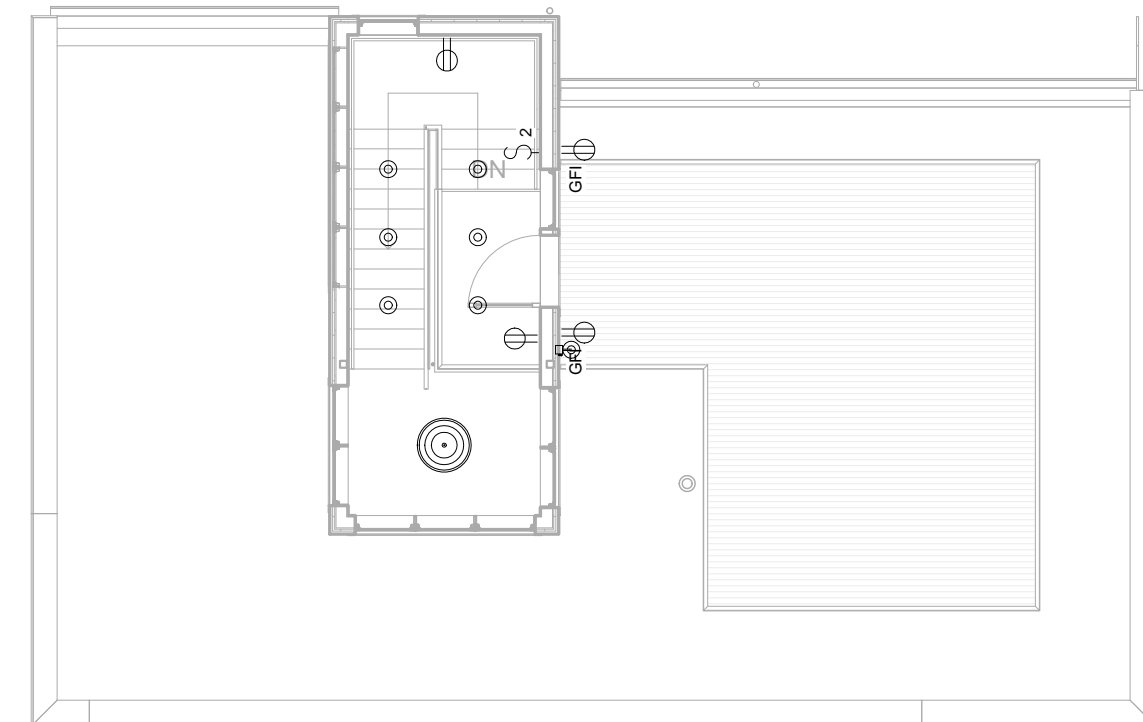
Provide GFI Receptacles in all wet locations

Provide receptacles at countertop level at a spacing of no more than 48" o.c.

All devices to be gray, decora type  
All face plates to be brushed aluminum

Provide appropriate power, receptacles and switching for all installed electrical appliances (range, dishwasher, disposal, etc.)

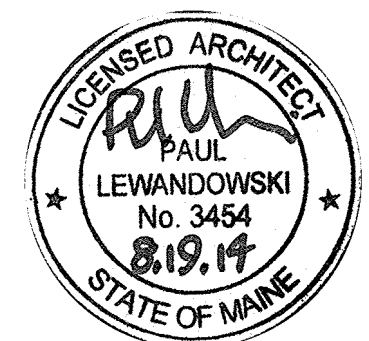
Lighting Fixture Schedule				
Type Mark	Count	Description	Manufacturer	Comments
CF1	2			
CF2	2			
CL24	3			
CL48	5			
JJ1	10			
JJ2	6			
PL1	4			
PL2	2			
PL3	1			
PL4	1			
RC4	18			
RC4W	7			
RC6	34			
UCC	3			
UL1	4			
WW1	4			
Grand total: 106				



③ 03 Roof - Electrical  
1/8" = 1'-0"

## Electrical Plans = Power

Project number 2014-19  
Date 8.19.14



E100

Scale 1/8" = 1'-0"