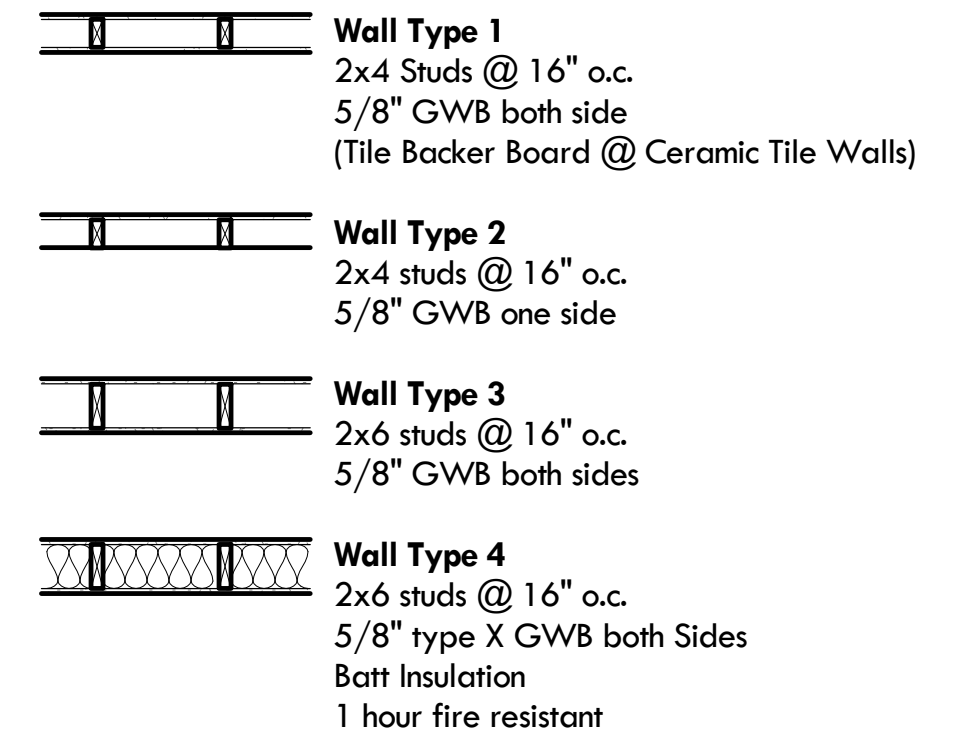


| ROOM NUMBER | NAME           | Level         | Room Finish Schedule |        |             |             |            |            |         |       |  |  | COMMENTS                    | Perimeter |                 |
|-------------|----------------|---------------|----------------------|--------|-------------|-------------|------------|------------|---------|-------|--|--|-----------------------------|-----------|-----------------|
|             |                |               | FLOOR                |        | WALLS       |             |            |            | CEILING |       |  |  |                             |           |                 |
|             |                |               | MAT'L                | BASE   | NORTH MAT'L | SOUTH MAT'L | EAST MAT'L | WEST MAT'L | MAT'L   | HT    |  |  |                             |           |                 |
| 000         | Basement       | 00 Basement   |                      |        |             |             |            |            |         |       |  |  |                             |           | 204' - 11"      |
| 100         | Office         | 01 First      | CT1                  | 6/A701 | GWB/P       | GWB/P       | GWB/P      | GWB/P      | GWB/P   | GWB/P |  |  |                             |           | 46' - 3 1/4"    |
| 100A        | Closet         | 01 First      | CT1                  | 6/A701 | GWB/P       | GWB/P       | GWB/P      | GWB/P      | GWB/P   | GWB/P |  |  |                             |           | 9' - 8"         |
| 101         | Stair/Entry    | 01 First      | MP                   |        |             | n/a         | GWB/P      | GWB/P      | GWB/P   | GWB/P |  |  |                             |           | 56' - 5 27/32"  |
| 102         | Kitchen        | 01 First      | CT1                  | 5/A701 | CWT1        | n/a         | GWB/P      | GWB/P      | GWB/P   | GWB/P |  |  | accent metal plate at stove |           | 77' - 1 15/16"  |
| 103         | Dining Room    | 01 First      | CT1                  | 5/A701 | n/a         | GWB/P       | GWB/P      | GWB/P      | GWB/P   | GWB/P |  |  |                             |           | 64' - 3 1/2"    |
| 104         | Pantry         | 01 First      | AT1                  | 6/A701 | GWB/P       | GWB/P       | GWB/P      | GWB/P      | GWB/P   | GWB/P |  |  | owner supplied accent tile  |           | 38' - 5 3/32"   |
| 105         | Living Room    | 01 First      | CT1                  | 5/A701 | n/a         | GWB/P       | GWB/P      | GWB/P      | GWB/P   | GWB/P |  |  |                             |           | 105' - 6 5/8"   |
| 106         | Bedroom #4     | 01 First      | CT1                  | 6/A701 | GWB/P       | GWB/P       | GWB/P      | GWB/P      | GWB/P   | GWB/P |  |  |                             |           | 38' - 7 3/4"    |
| 106B        | Closet         | 01 First      | CT1                  | 6/A701 | GWB/P       | GWB/P       | GWB/P      | GWB/P      | GWB/P   | GWB/P |  |  |                             |           | 13' - 8 11/32"  |
| 107         | Bathroom       | 01 First      | CT2                  | CT2B   | CWT2        | CWT2        | CWT2       | CWT2       | CWT2    | CWT2  |  |  |                             |           | 29' - 10 19/32" |
| 107B        | Linen          | 01 First      | CT1                  | 6/A701 | GWB/P       | GWB/P       | GWB/P      | GWB/P      | GWB/P   | GWB/P |  |  |                             |           | 6' - 8"         |
| 108         | Foyer          | 01 First      | CT1                  | 5/A701 | GWB/P       | GWB/P       | n/a        | GWB/P      | GWB/P   | GWB/P |  |  |                             |           | 49' - 0 21/32"  |
| 109         | Hall           | 01 First      | CT1                  | 5/A701 | GWB/P       | GWB/P       | n/a        | GWB/P      | GWB/P   | GWB/P |  |  |                             |           | 31' - 11 5/16"  |
| 109A        | Closet         | 01 First      | CT1                  | 6/A701 | GWB/P       | GWB/P       | GWB/P      | GWB/P      | GWB/P   | GWB/P |  |  |                             |           | 10' - 0"        |
| 110         | Garage         | 01 First      | Existing Concrete    | 5/A701 | GWB/P       | GWB/P       | GWB/P      | GWB/P      | GWB/P   | GWB/P |  |  |                             |           | 81' - 1 5/16"   |
| 200         | Bedroom        | 02 Second     | CT1                  | 6/A701 | GWB/P       | GWB/P       | GWB/P      | GWB/P      | GWB/P   | GWB/P |  |  |                             |           | 52' - 7"        |
| 200A        | Closet         | 02 Second     | CT1                  | 6/A701 | GWB/P       | GWB/P       | GWB/P      | GWB/P      | GWB/P   | GWB/P |  |  |                             |           | 16' - 2 25/32"  |
| 201         | Stair          | 02 Second     | MP                   |        |             | n/a         | GWB/P      | GWB/P      | GWB/P   | GWB/P |  |  |                             |           | 45' - 2"        |
| 202         | Bedroom        | 02 Second     | CT1                  | 6/A701 | GWB/P       | GWB/P       | GWB/P      | GWB/P      | GWB/P   | GWB/P |  |  |                             |           | 48' - 7 19/32"  |
| 202A        | Closet         | 02 Second     | CT1                  | 6/A701 | GWB/P       | GWB/P       | GWB/P      | GWB/P      | GWB/P   | GWB/P |  |  |                             |           | 12' - 6 3/4"    |
| 203         | Master Bath    | 02 Second     | CT4                  | CT4B   | CWT3        | CWT3        | CWT3       | CWT3       | CWT3    | CWT3  |  |  |                             |           | 50' - 4 7/32"   |
| 204         | Master Bedroom | 02 Second     | CT3                  | 5/A701 | GWB/P       | GWB/P       | GWB/P      | GWB/P      | GWB/P   | GWB/P |  |  |                             |           | 76' - 2 27/32"  |
| 205         | W.I.C.         | 02 Second     | CT3                  | 5/A701 | GWB/P       | GWB/P       | GWB/P      | GWB/P      | GWB/P   | GWB/P |  |  |                             |           | 29' - 3"        |
| 206         | Laundry        | 02 Second     | CT1                  | CT1B   | CWT4        | CWT4        | CWT4       | CWT4       | CWT4    | CWT4  |  |  |                             |           | 17' - 7 1/2"    |
| 207         | Bathroom       | 02 Second     | CT1                  | CT1B   | CWT4        | CWT4        | CWT4       | CWT4       | CWT4    | CWT4  |  |  |                             |           | 34' - 11 3/8"   |
| 208         | Hall           | 02 Second     | CT1                  | 5/A701 | GWB/P       | GWB/P       | GWB/P      | GWB/P      | GWB/P   | GWB/P |  |  |                             |           | 43' - 8 1/2"    |
| 208A        | Closet         | 02 Second     | CT1                  | 6/A701 | GWB/P       | GWB/P       | GWB/P      | GWB/P      | GWB/P   | GWB/P |  |  |                             |           | 14' - 7 3/4"    |
| 208B        | Closet         | 02 Second     | CT1                  | 6/A701 | GWB/P       | GWB/P       | GWB/P      | GWB/P      | GWB/P   | GWB/P |  |  |                             |           | 14' - 7 3/4"    |
| 211         | Ante Room      | 02 Second     | CT1                  | CT1B   | CWT4        | CWT4        | CWT4       | CWT4       | CWT4    | CWT4  |  |  |                             |           | 20' - 2 1/2"    |
| 300         | Stair          | 03 Stair/Roof | MP                   |        |             | GWB/P       | GWB/P      | GWB/P      | GWB/P   | GWB/P |  |  |                             |           | 56' - 0 1/4"    |



All interior partitions shall be Type 1 u.n.o.

Interior Wall Types  
1/2" = 1'-0"

## Window Notes

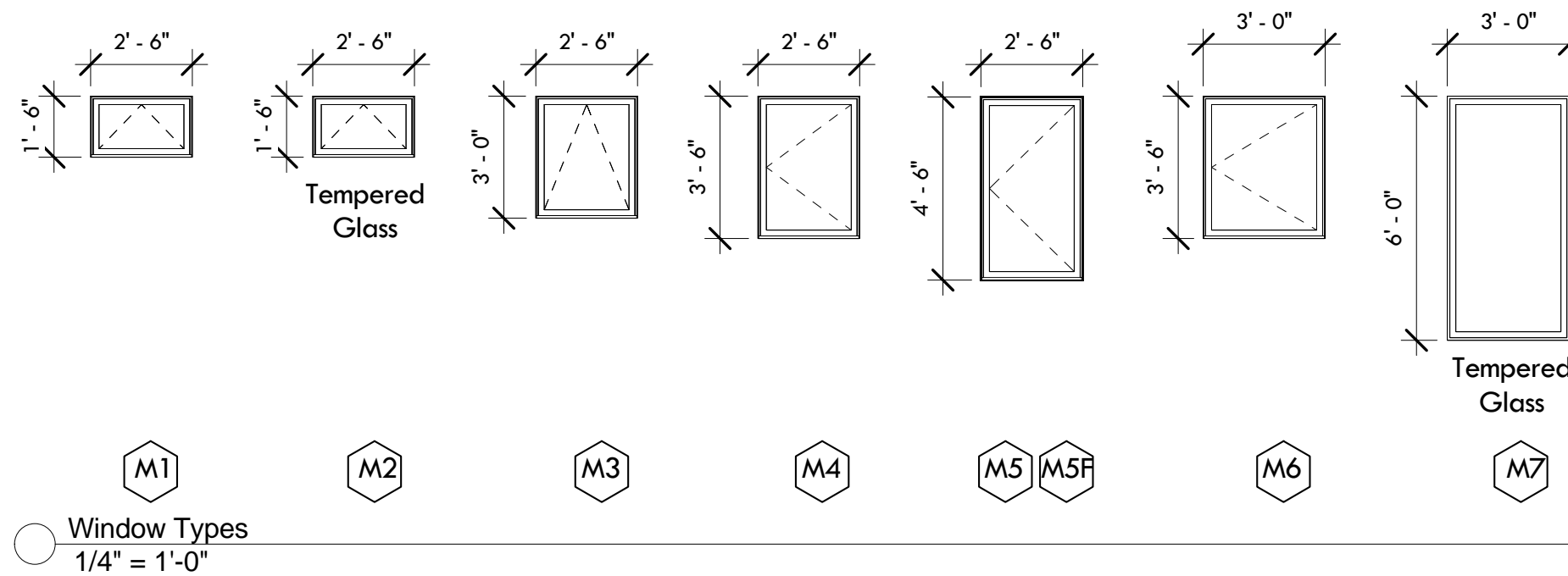
### Fiberglass Windows

Marvin Integrity All Ultrex  
Interior - Stone White  
Exterior - Pebble gray  
Hardware - Satin Nickel  
Grille Pattern - non  
Glass - Low-E Insulating w/ Argon

Egress Window meets minimum clear opening of 24" height, 20" width, and 5.7 SF as designated.

Install according to Manufacturer's recommendations  
Provide pressure treated wood blocking and flashing as necessary

Provide SunDefense™ Dual Low-E IG with argon with 2.5 mm glass at southern and western windows



| Window Schedule |       |                  |            |             |         |         |                |               |
|-----------------|-------|------------------|------------|-------------|---------|---------|----------------|---------------|
| Type Mark       | Count | Manufacturer     | Model      | Sill Height | Width   | Height  | Glazing Type   | Type Comments |
| M1              | 30    | Marvin Integrity | IFAWN2616T |             | 2' - 6" | 1' - 6" | Low-E Tempered |               |
| M2              | 13    | Marvin Integrity | IFAWN2616  | 6' - 1 1/4" | 2' - 6" | 1' - 6" | Low-E          |               |
| M3              | 3     | Marvin Integrity | IFCA2630   | 2' - 4 3/4" | 2' - 6" | 3' - 0" | Low-E          |               |
| M4              | 2     | Marvin Integrity | IFCA2636   | 3' - 2"     | 2' - 6" | 3' - 6" | Low-E          |               |
| M5              | 25    | Marvin Integrity | IFCA2646E  | 2' - 2"     | 2' - 6" | 4' - 6" | Low-E          | Egress Window |
| M5F             | 32    | Marvin Integrity | IFCA2646   |             | 2' - 6" | 4' - 6" | Low-E          | Fixed Window  |
| M6              | 1     | Marvin Integrity | IFCA3036E  | 3' - 2"     | 3' - 0" | 3' - 6" | Low-E          |               |
| M7              | 2     | Marvin Integrity | IFCA3060T  | 0' - 8"     | 3' - 0" | 6' - 0" | Low-E Tempered | Fixed Window  |