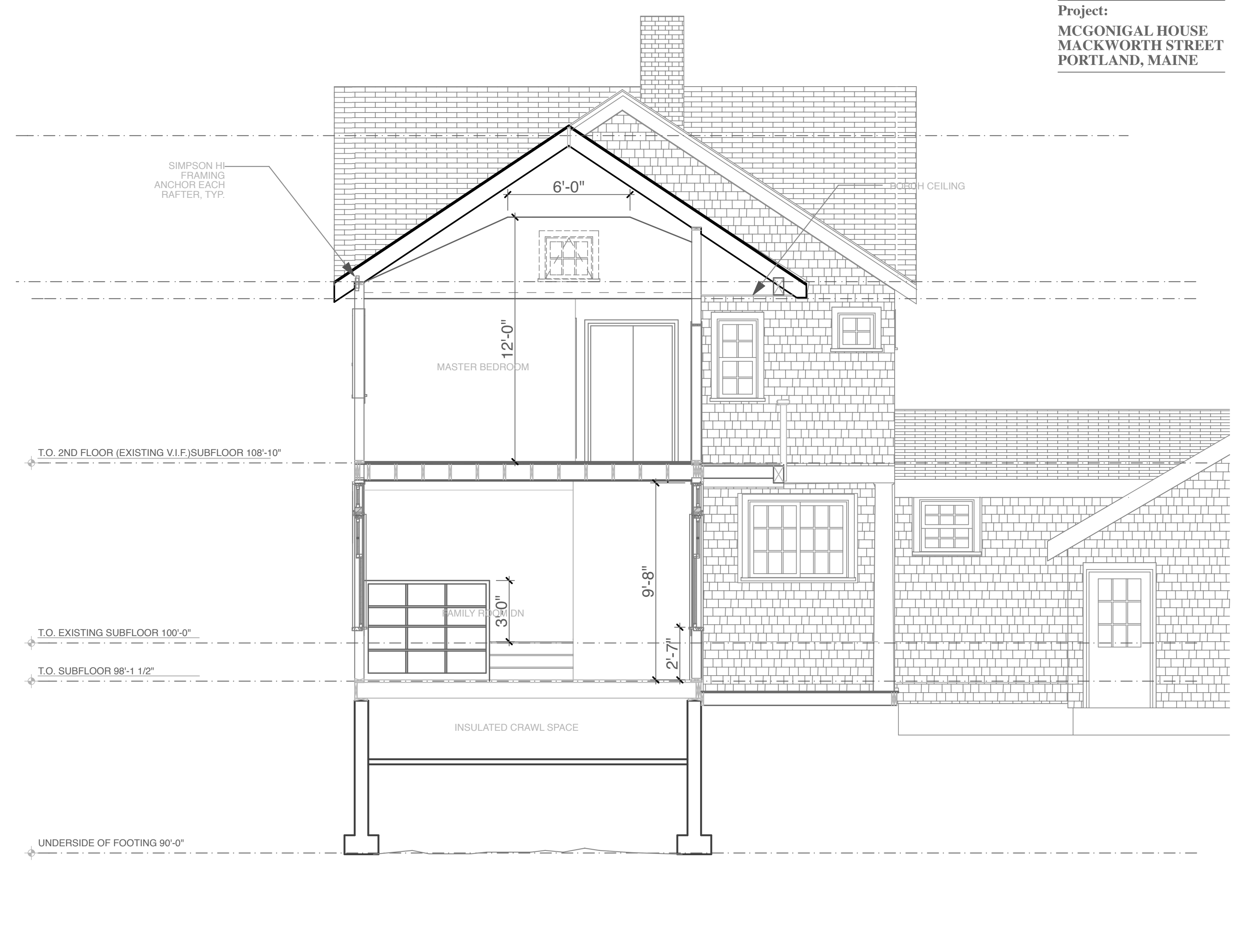
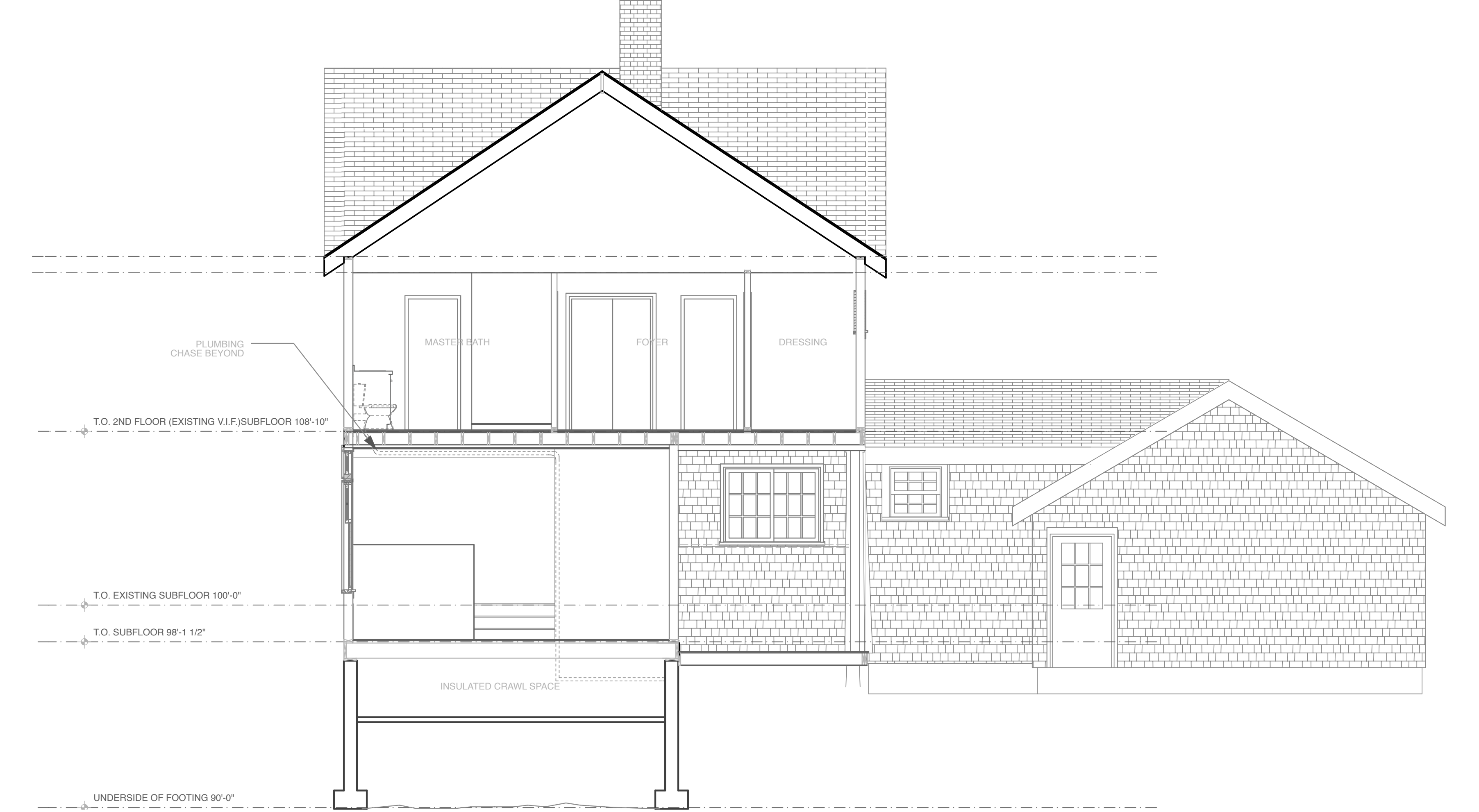


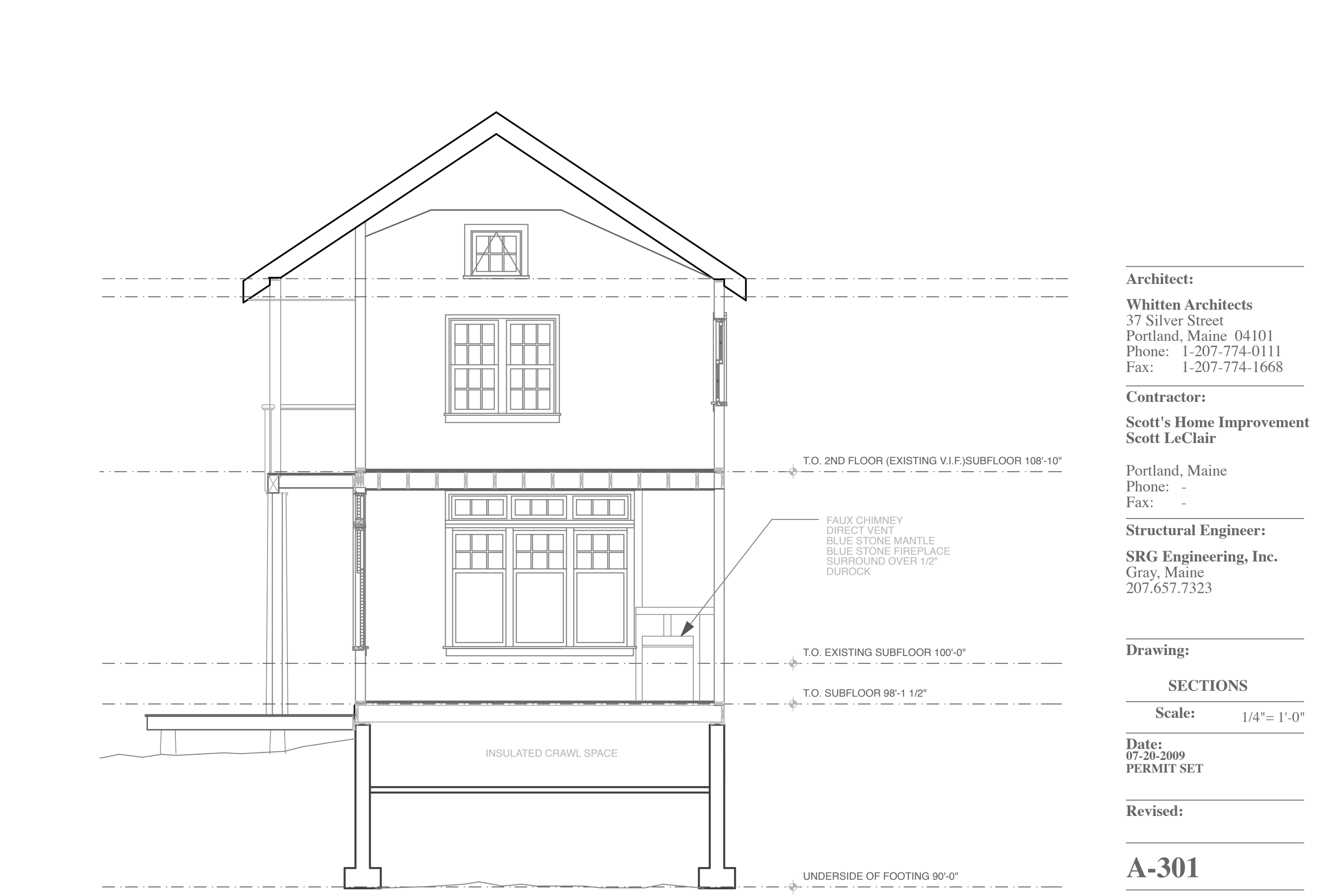
1 Section Through Addition 1/4" = 1'-0"



2 Section Through Addition 1/4" = 1'-0"



3 Section Through Addition 1/4" = 1'-0"



4 Section Through Addition 1/4" = 1'-0"

Architect:
Whitten Architects
 37 Silver Street
 Portland, Maine 04101
 Phone: 1-207-774-0111
 Fax: 1-207-774-1668

Contractor:
Scott's Home Improvement
Scott LeClair
 Portland, Maine
 Phone: -
 Fax: -

Structural Engineer:
SRG Engineering, Inc.
 Gray, Maine
 207.657.7323

Drawing:
SECTIONS
 Scale: 1/4" = 1'-0"

Date:
 07-20-2009
 PERMIT SET

Revised:

A-301