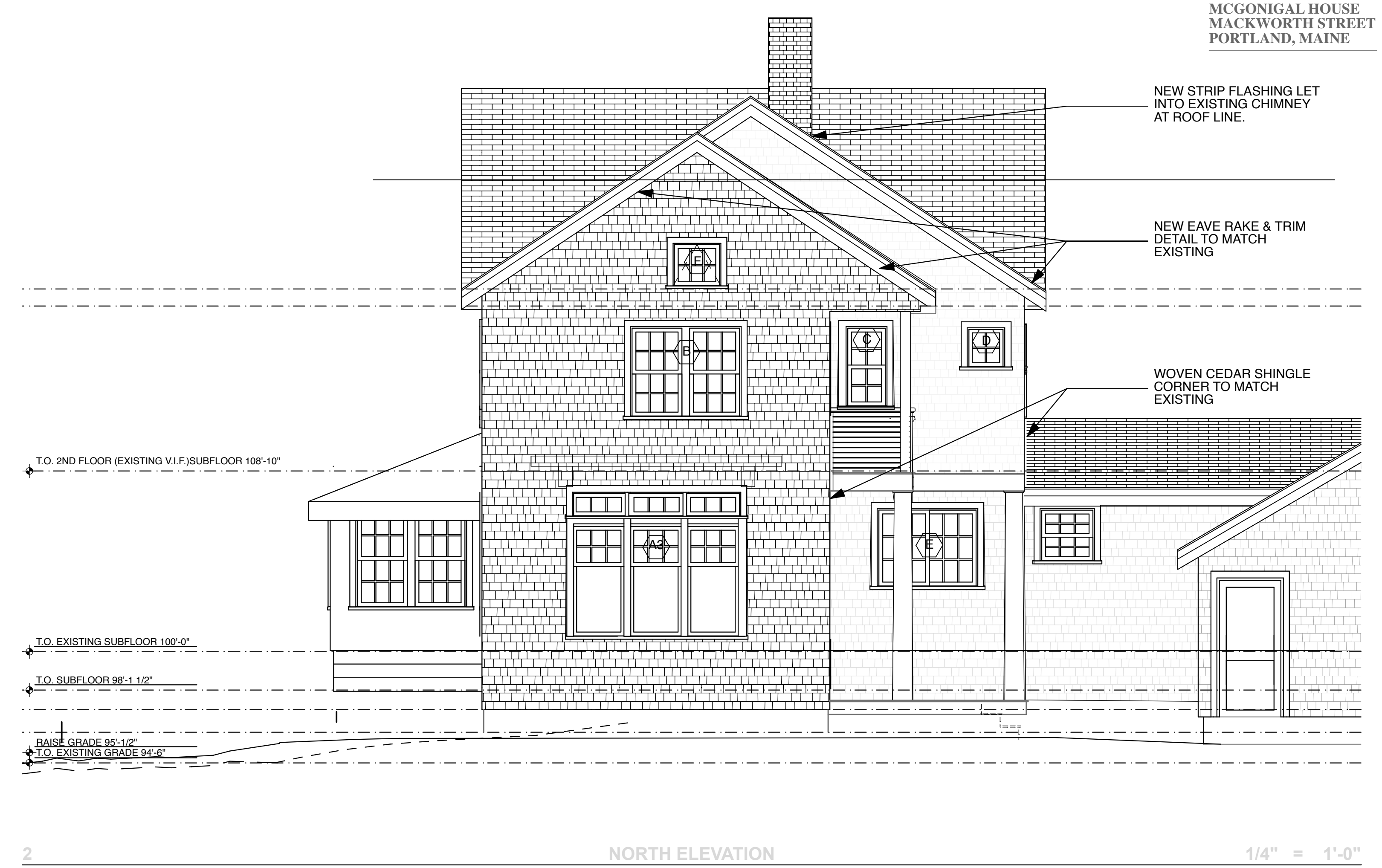


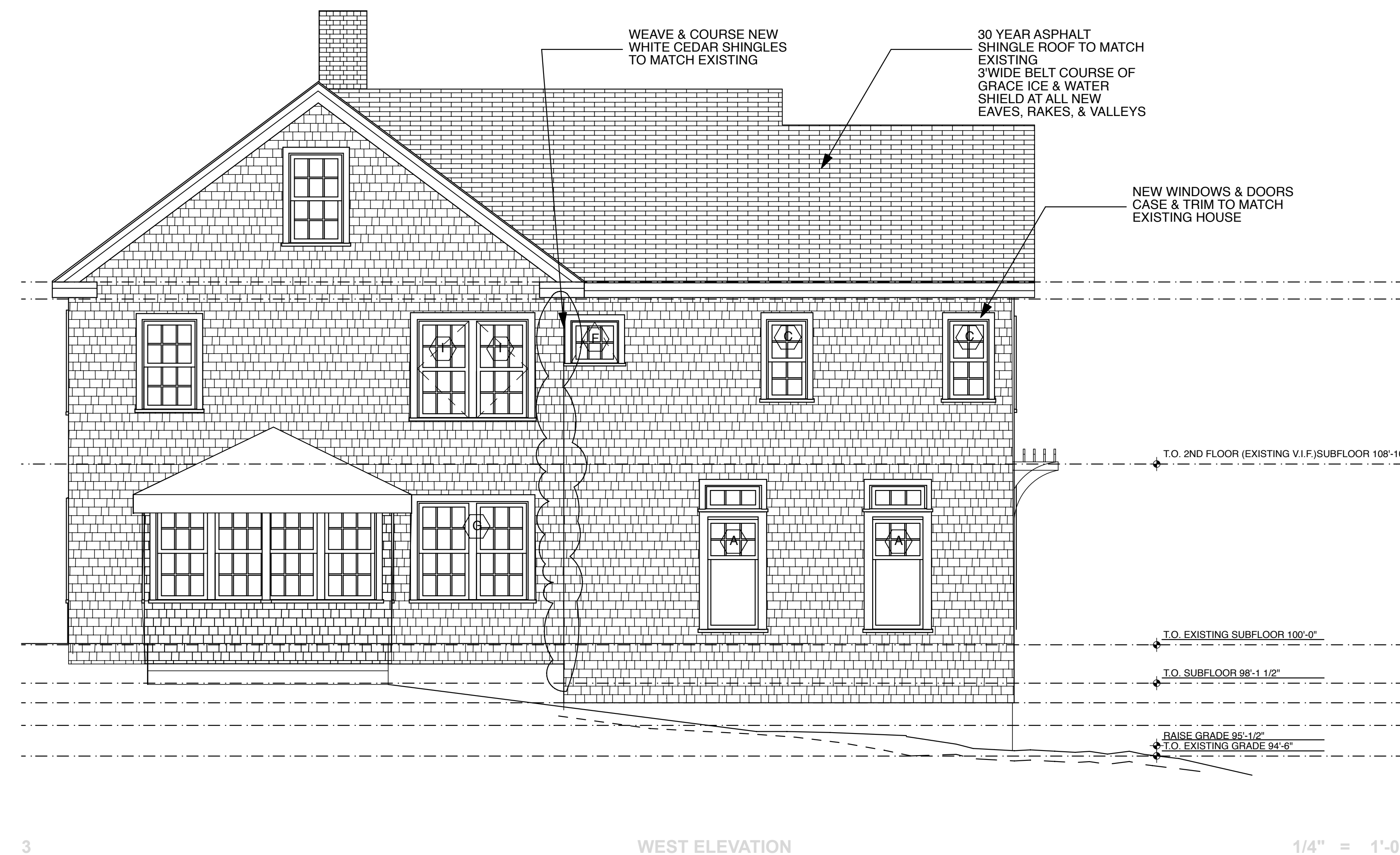
EAST ELEVATION

1/4" = 1'-0"



NORTH ELEVATION

1/4" = 1'-0"



WEST ELEVATION

1/4" = 1'-0"

WINDOW SCHEDULE

SYM.	MANUF.	TYPE	UNIT #	R.O. WIDTH	R.O. HEIGHT	MATERIAL	SCREEN	REMARKS
A	MARVIN INTEGRITY	DOUBLE HUNG	ITDH3468C	2' - 10 1/2"	5' - 8 1/4"	WOOD/ULTRIX	YES	FACTORY MULLED WITH TRANSOM MUNTIONS TO MATCH DRAWINGS
	MARVIN INTEGRITY	DH TRANSOM	ITDH3416	2' - 10 1/2"	1' - 4 1/4"	WOOD/ULTRIX	YES	FACTORY MULLED TO DH ABOVE
A3	MARVIN INTEGRITY	DOUBLE HUNG	ITDH3468C (3W)	8' - 5 1/2"	5' - 8 1/4"	WOOD/ULTRIX	YES	UNIT A MULLED 3 WIDE
	MARVIN INTEGRITY	DH TRANSOM	ITDH3416 (3W)	8' - 5 1/2"	1' - 4 1/4"	WOOD/ULTRIX	YES	UNIT A MULLED 3 WIDE
B	MARVIN INTEGRITY	DOUBLE HUNG	ITDH3056 (2W)	5' - 0"	4' - 8 1/4"	WOOD/ULTRIX	YES	UNIT B MULLED 2 WIDE
C	MARVIN INTEGRITY	DOUBLE HUNG	ITDH2448	2' - 2 1/2"	4' - 0 1/4"	WOOD/ULTRIX	YES	-
D	MARVIN INTEGRITY	AWNING	IAWN 2523	2' - 1"	1' - 11 5/8"	WOOD/ULTRIX	YES	-
E	MARVIN INTEGRITY	GLIDER	ITGL6048	5' - 0 1/2"	4' - 0 1/4"	WOOD/ULTRIX	YES	COORDINATE W/ 36" HIGH KITCHEN COUNTER HEIGHT
F	MARVIN INTEGRITY	AWNING	ITAWN 2927	2' - 5"	2' - 3 5/8"	WOOD/ULTRIX	YES	-
G	MARVIN INTEGRITY	DOUBLE HUNG	ITDH3456 (2W)	5' - 8"	4' - 8 1/4"	WOOD/ULTRIX	YES	MULL WITH 2" STUD POCKET. MUNTIONS 6/6 TO MATCH EXISTING WINDOW PATTERN. VERIFY EGRESS FOR BEDROOM.
H	MARVIN INTEGRITY	INSWING FD TRANSOM	IFDQ3616	3' - 1 15/16"	1' - 4 1/4"	WOOD/ULTRIX	NO	FIXED. FIELD MULLED TO DOOR 100.
I	MARVIN INTEGRITY	CASEMENT	ICAS355	2' - 9"	4' - 7 5/8"	WOOD/ULTRIX	YES	EGRESS FOR BEDROOM. MUNTIONS TO MATCH EXISTING DOUBLE HUNG W/ MEETING RAIL. MATCH CENTERLINE OF WINDOWS BELOW

WINDOW NOTES:

- VERIFY ALL ROUGH OPENING REQUIREMENTS WITH MANUFACTURER PRIOR TO ROUGH CARPENTRY AND WINDOW ORDER.
- PROVIDE SHOP DRAWINGS FOR ARCHITECT'S REVIEW PRIOR TO WINDOW ORDER.
- WINDOW UNITS TO UTILIZE LOW E II GLAZING.
- EXTERIOR GLAZING FINISH TO BE STONE WHITE CLAD. INTERIOR WOOD FINISH TO BE PREFINISH WHITE.
- ALL HARDWARE TO BE OIL RUBBED BRONZE. SASH LOCKS AND SASH LIFTS (DBL HUNG UNITS), FOLDING HANDLE (CSMNT & AWNING UNITS).
- UNITS LOCATED IN BEDROOMS SPECIFIED AS EGRESS UNITS TO MEET ALL EGRESS APPLICABLE REQUIREMENTS FOR OPENABLE AREA AND SILL HEIGHT ELEVATION.
- SIX (SIMULATED DIVIDED LITES) TO BE 7/8" WITH SPACER BAR.
- ALL OPERATIVE WINDOW UNITS WITH MARVIN SCREENS. FINISH TO BE H.T.W. SCREENING (HIGH TRANSPARENCY WIRE OR FIBERGLASS).

DOOR SCHEDULE

SYM.	MANUF.	TYPE	UNIT #	UNIT WIDTH	UNIT HEIGHT	UNIT THK	MATL.	HC/SC	HARDWARE	LOCKSET	REMARKS
100	MARVIN INTEGRITY	INSWING FRENCH DOOR	IFD3080XR	3' - 1 15/16"	8' - 0"	1 3/4"	WD/ULTRIX	SC		ENTRY LOCK SET	TEMPERED FIELD MULLED WITH IFDQ3616.
101	BROSCO	SWING		2' - 0"	6' - 8"	1 3/8"	WD	SC		PASSAGE SET	-
200	MARVIN INTEGRITY	INSWING FRENCH DOOR	IFD5080XR	5' - 0"	6' - 10 1/2"	1 3/4"	WD/ULTRIX	SC		ENTRY LOCK SET	TEMPERED
201	BROSCO	SWING	XX	2' - 6"	6' - 8"	1 3/8"	WD	SC		PRIVACY SET	-
202	BROSCO	POCKET	XX	2' - 6"	6' - 8"	1 3/8"	WD	SC		PRIVACY SET	-
203	BROSCO	SLIDING	XX	4' - 0"	6' - 8"	1 3/8"	WD	SC		PASSAGE SET	-
204	BROSCO	POCKET	XX	2' - 6"	6' - 8"	1 3/8"	WD	SC		PASSAGE SET	-
205	BROSCO	SWING	XX	2' - 6"	6' - 8"	1 3/8"	WD	SC		PASSAGE SET	-
206	BROSCO	SWING	XX	2' - 6"	6' - 8"	1 3/8"	WD	SC		PRIVACY SET CHECK W/ OWNER	-
207	RE-USE EXSTG	SWING	XX	2' - 4"	6' - 8"	1 3/8"	WD	SC		PRIVACY SET	RE-USE EXISTING BATHROOM DOOR

DOOR NOTES:

- COORDINATE ALL EXISTING ROUGH OPENING REQUIREMENTS WITH MANUFACTURER PRIOR TO PLACING DOOR ORDER. NOTIFY ARCHITECT OF ANY FIELD-RELATED CHANGES TO DOOR SIZES.
- REUSE EXISTING DOORS IN EXISTING HOUSE WHERE POSSIBLE.
- ALL DOORS IN EXISTING HOUSE TO REUSE EXISTING WOOD TRIM CASING MATERIAL (INTERIORS); IN NEW BUILD ALL DOORS TO RECEIVE PNTD POPLAR OR PNTD PINE WOOD TRIM CASING MATERIAL.
- GLAZING TO BE TEMPERED AS REQUIRED.
- ALL EXTERIOR DOOR HARDWARE TO BE OIL RUBBED BRONZE FINISH. ALL INTERIOR DOOR HARDWARE TO MATCH EXISTING. VERIFY WITH OWNER.
- ENTRY SET LOCKSETS TO UTILIZE MULTI-POINT LOCKING HARDWARE SYSTEM.
- VERIFY HANDING OF INDIVIDUAL DOORS WITH OWNER / ARCHITECT PRIOR TO PLACING DOOR AND HARDWARE ORDER.

Architect:

Whitten Architects
37 Silver Street
Portland, Maine 04101
Phone: 1-207-774-0111
Fax: 1-207-774-1668

Contractor:

Scott's Home Improvement
Scott LeClair

Portland, Maine
Phone: -
Fax: -

Structural Engineer:

SRG Engineering, Inc.
Gray, Maine
207.657.7323

Drawing:

EXISTING
ELEVATIONS

Date:

07-20-2009

PERMIT SET

Revised:

A-201