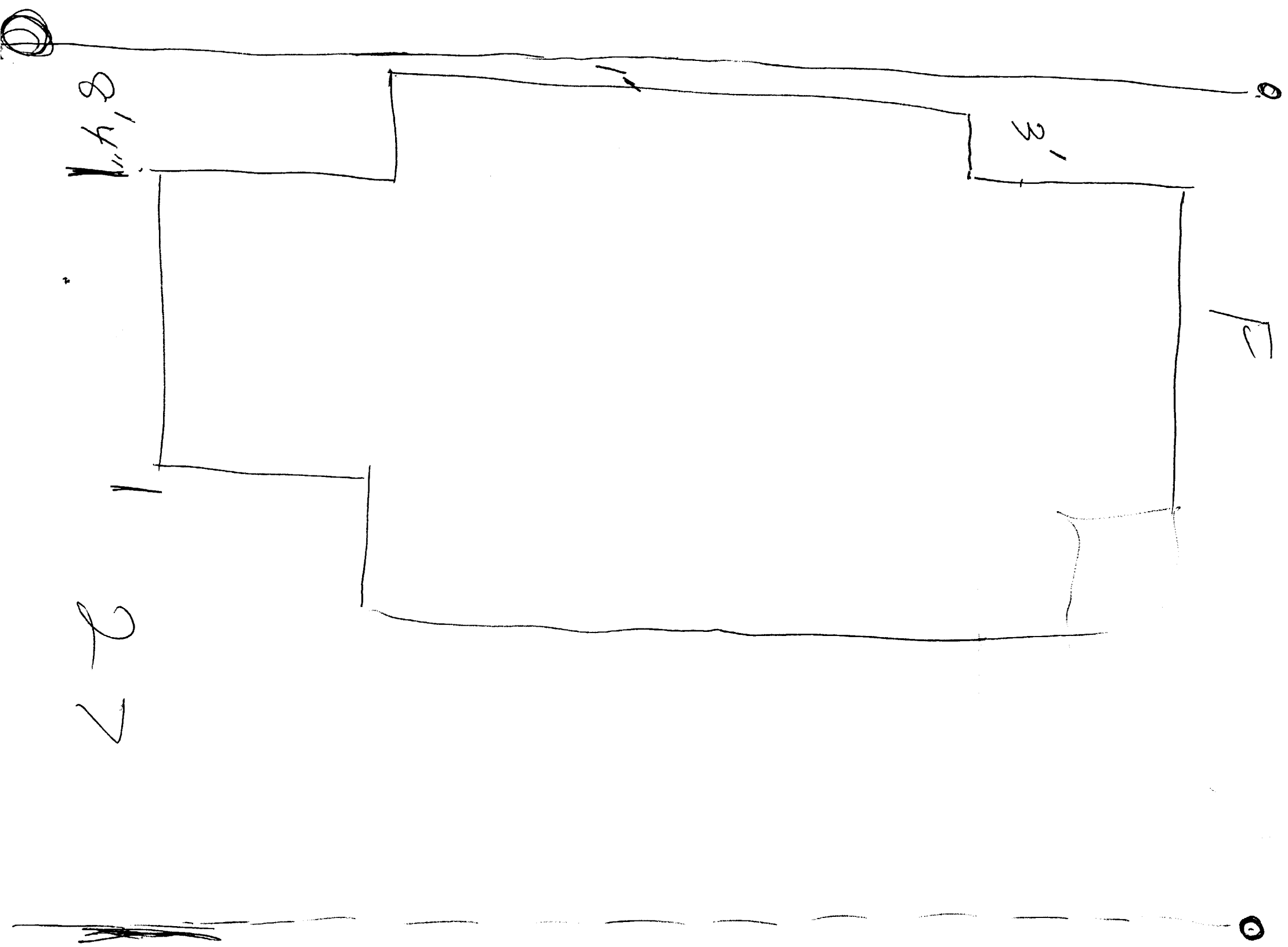
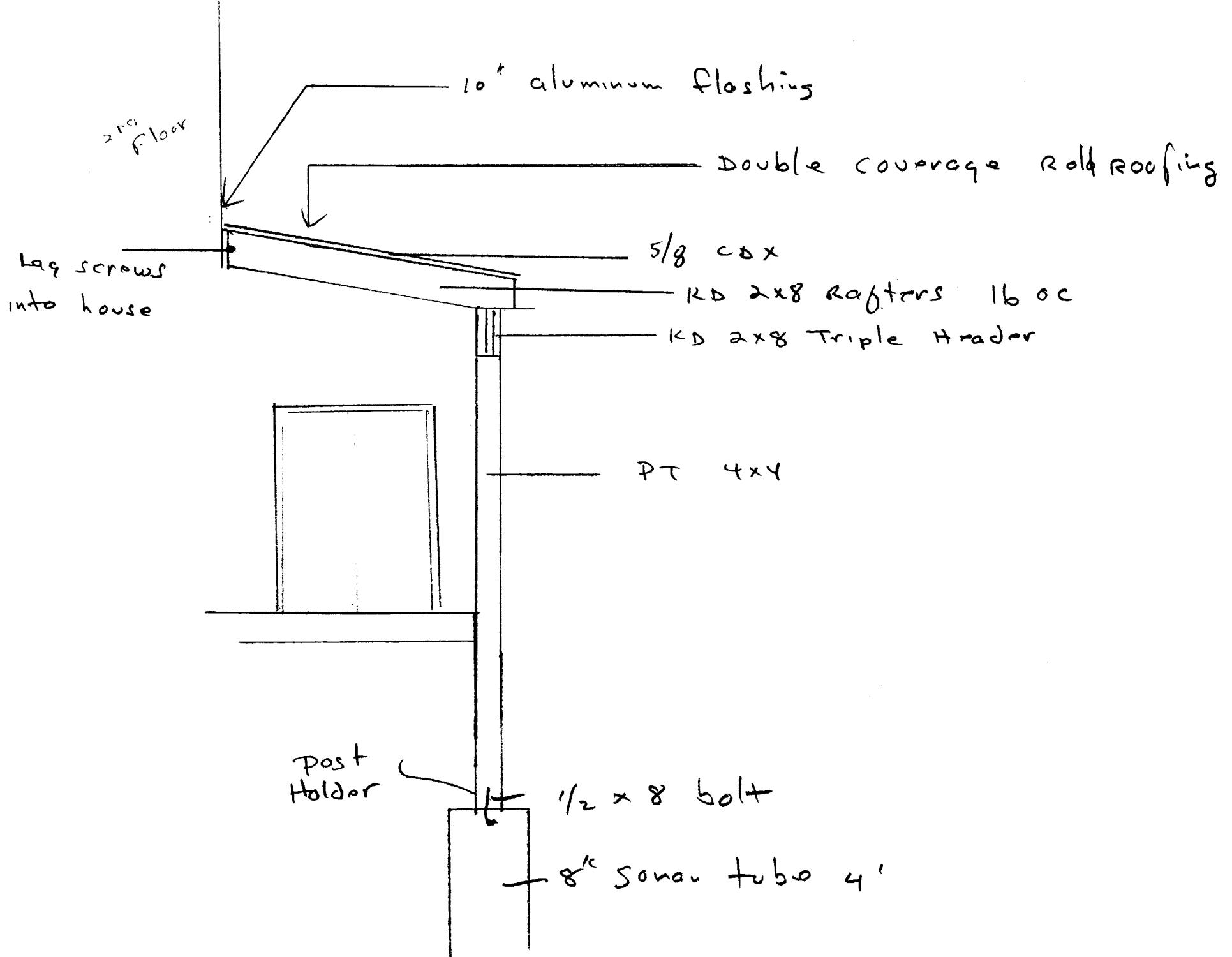
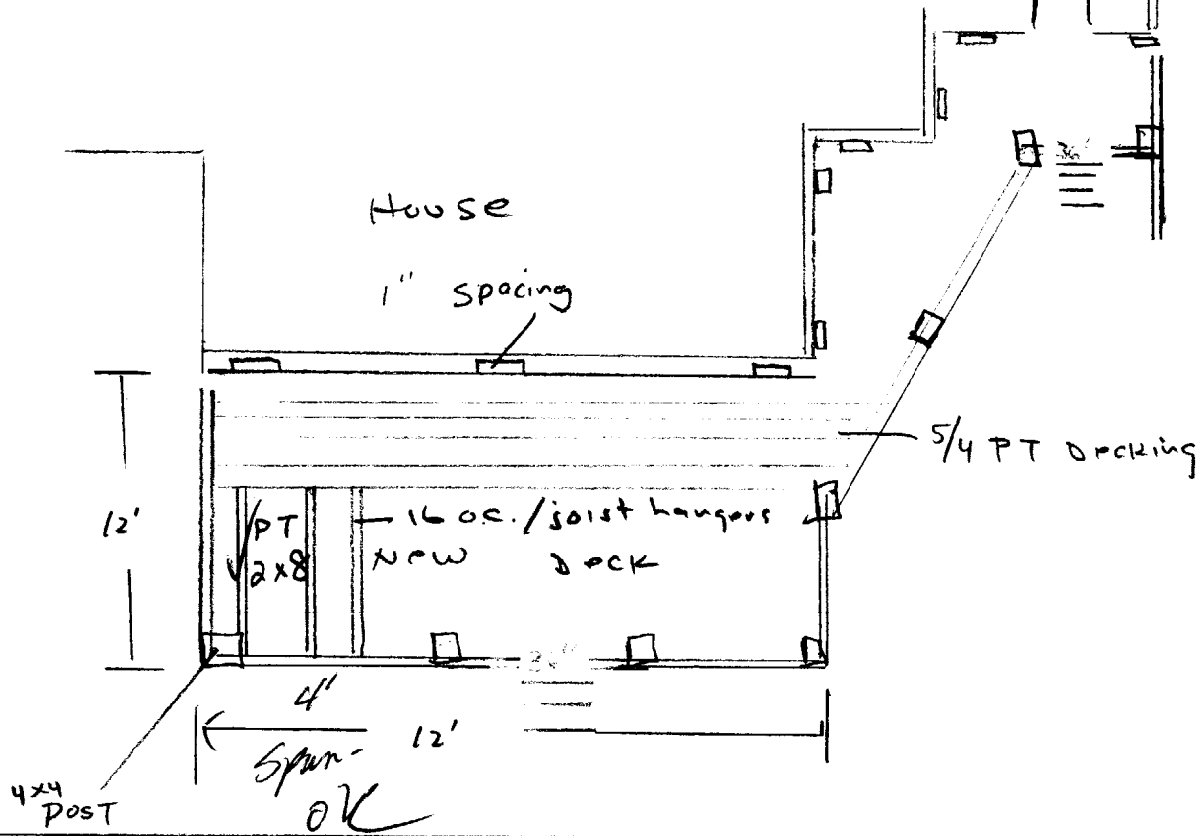


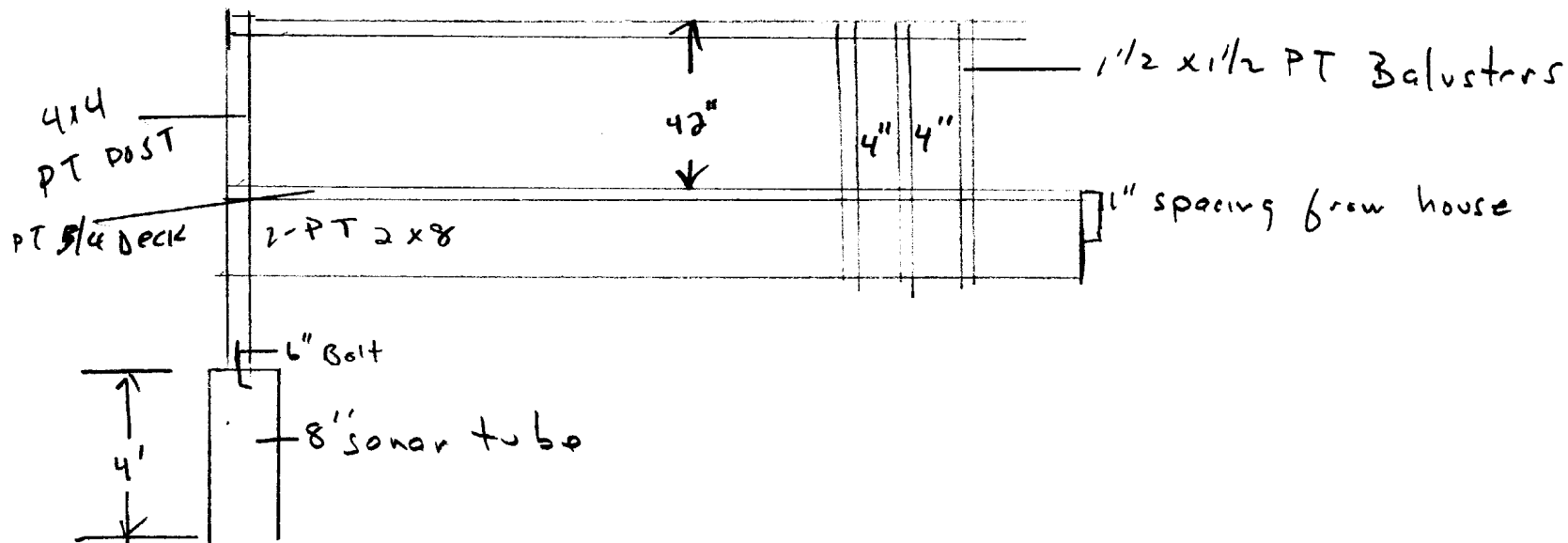
7/9/02 submittal  
24 #2 Sawyer St  
138-B-5







FRAMING



STAIRS will be  
 PT 2x12 with  
 Riser no greater  
 than  $7\frac{3}{4}$ ' and  
 treads  $11\frac{1}{4}$ .  
 STAIRS will rest  
 on 4" concrete slab  
 at least  $36$ " wide  
 STAIRS

over →